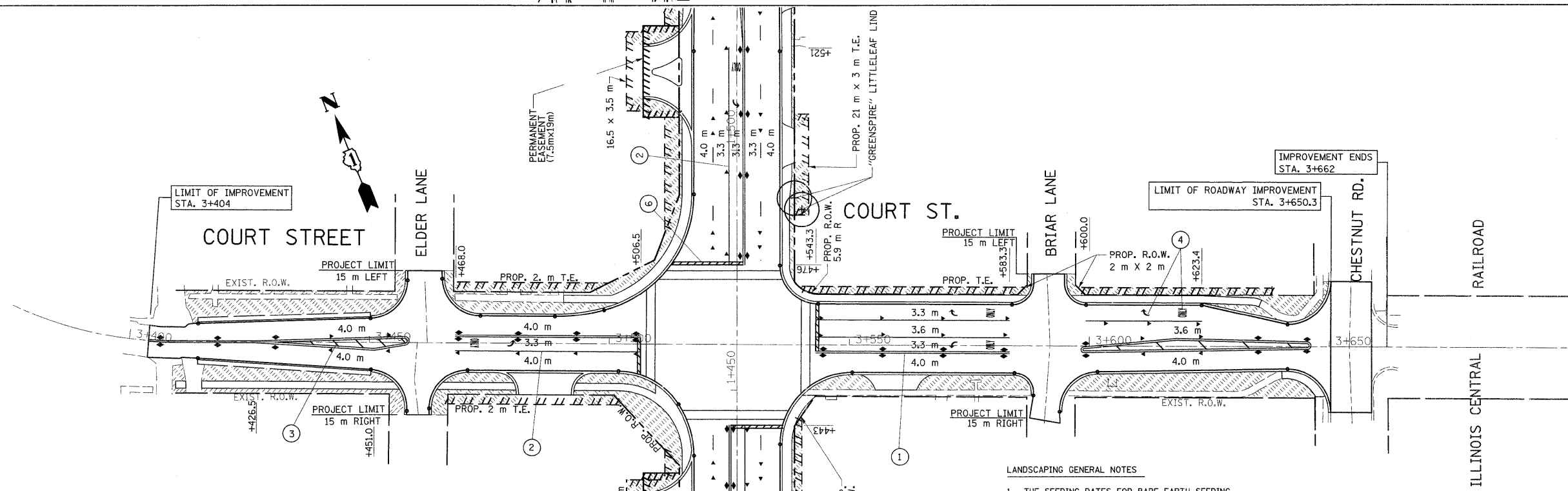
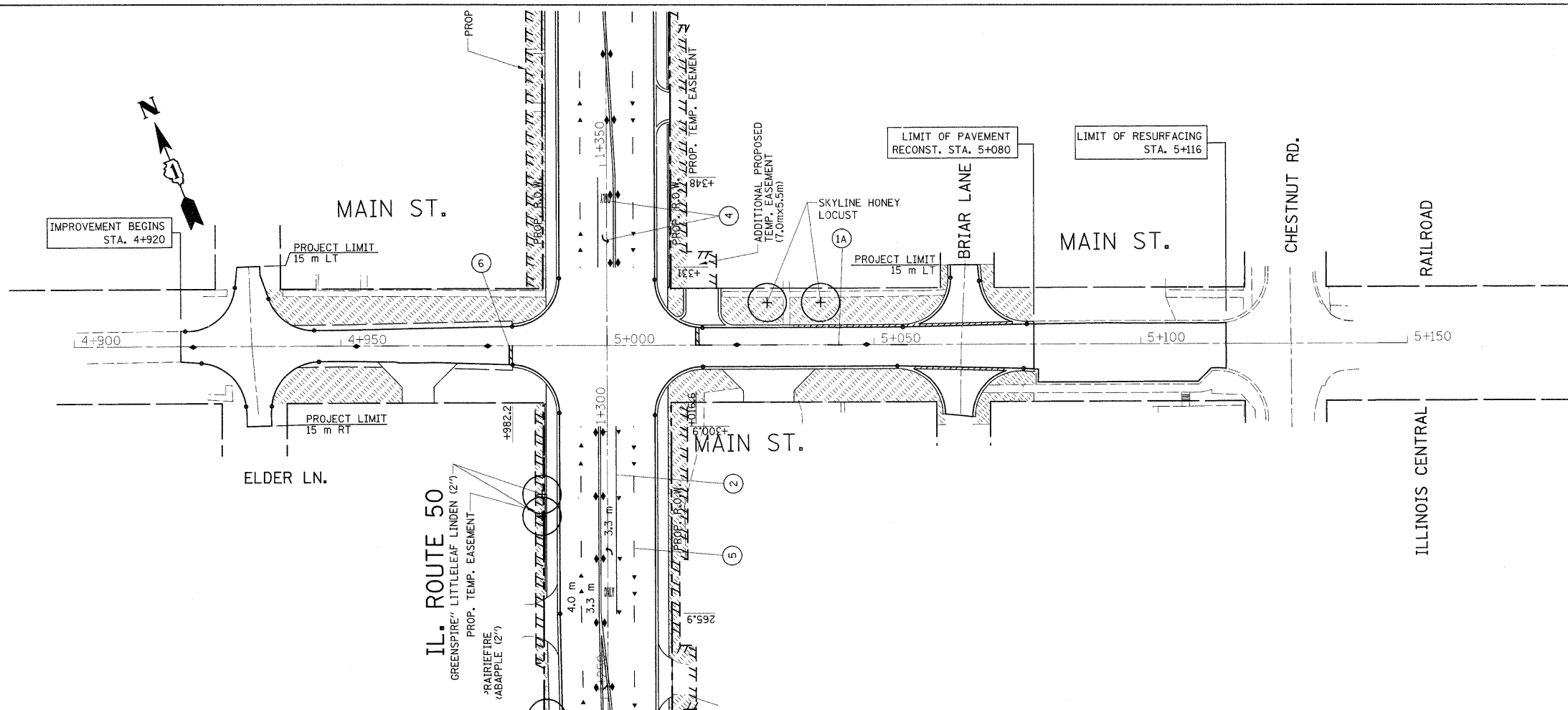


F.A.P. RTE.	SECTION	COUNTY	TOTAL SHEETS	SHEET NO.
840		WILL	121	58
STA.	TO STA.			
FED. ROAD DIST. NO.	ILLINOIS FED. AID PROJECT			



- ① THERMOPLASTIC PAVEMENT MARKING DOUBLE SOLID YELLOW, CENTERLINE 250 mm (11") C-C
- ② THERMOPLASTIC PAVEMENT MARKING 100mm (4") SKIP-DASH YELLOW (9m SKIP 3m DASH)
- ③ THERMOPLASTIC PAVEMENT MARKING 150mm (6") SOLID WHITE
- ④ THERMOPLASTIC PAVEMENT MARKING 300mm (12") AT 45° DIAGONALS, SOLID YELLOW
- ⑤ THERMOPLASTIC PAVEMENT MARKING LETTERS & SYMBOLS
- ⑥ THERMOPLASTIC PAVEMENT MARKING 100mm (4") SKIP-DASH WHITE (9m SKIP 3m DASH) LANE LINES
- ⑦ THERMOPLASTIC PAVEMENT MARKING 600mm (24") SOLID WHITE, STOP BAR
- ⑧ RAISED REFLECTIVE PAVEMENT MARKERS AMBER
- ⑨ RAISED REFLECTIVE PAVEMENT MARKERS CRYSTAL

LANDSCAPING GENERAL NOTES

- THE SEEDING DATES FOR BARE EARTH SEEDING OF MIXTURE CLASS 2A SHALL BE FROM APRIL 1 TO JUNE 1, AND FROM AUGUST 15 TO SEPTEMBER 30.
- EROSION CONTROL BLANKET SHALL BE PLACED ON ALL SEEDING AREAS

LANDSCAPING LEGEND

	SEEDING CLASS 2A AND TOPSOIL FURNISH AND PLACE, 10mm
	SODDING, SALT TOLERANT AND TOPSOIL FURNISH AND PLACE, 100mm

REVISIONS	
NAME	DATE

ILLINOIS DEPARTMENT OF TRANSPORTATION
**MAIN ST. & COURT ST.
 PAVEMENT MARKING & LANDSCAPING
 PLAN**

SCALE 1:500
 DATE 10/17/2011
 DRAWN BY
 CHECKED BY