

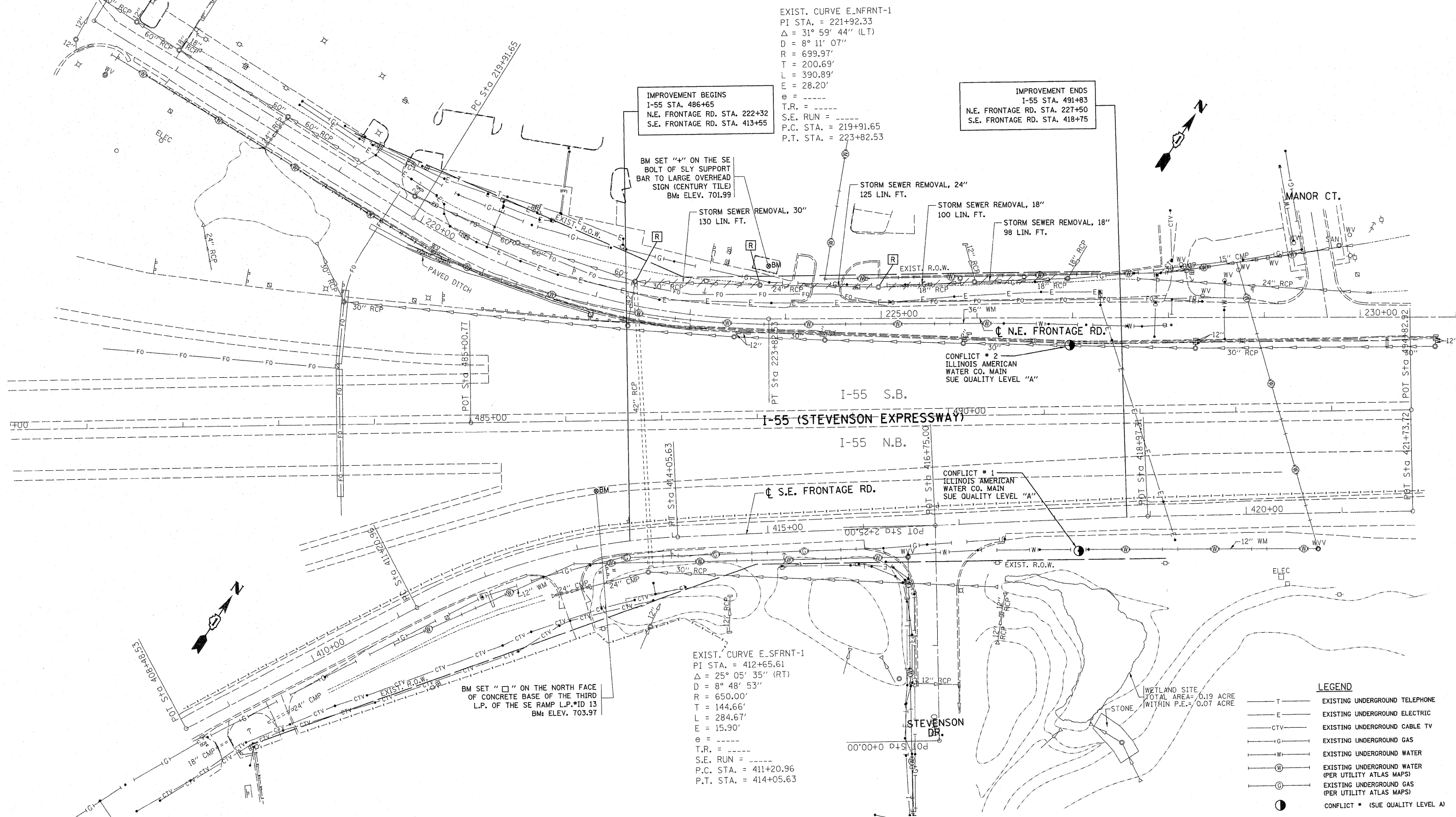
VERIFIED UTILITY INFORMATION - SUE QUALITY LEVEL A

CONFLICT NO.	SIZE / TYPE	NORTHING	EASTING	STATION	OFFSET	TOP OF UTILITY	EXISTING CUT	REFERENCE GROUND ELEV.	COMMENTS
1	WATER MAIN	1828656.33	1057990.33	418+23.62	33.19 RT	700.65	3.05	703.70	ILLINOIS AMERICAN WATER
2	WATER MAIN	1828848.50	1057853.58	226+99.70	7.21 RT	701.74	6.93	708.67	ILLINOIS AMERICAN WATER

NOTES:

- HORIZONTAL CONTROL, VERTICAL CONTROL, CENTERLINE ALIGNMENT, AND TOPOGRAPHIC FEATURES WERE SUPPLIED BY ILLINOIS DEPARTMENT OF TRANSPORTATION, CONTRACT NUMBER 60A56 DATED JULY 30, 2008.
- COMCAST DO NOT HAVE ANY UNDERGROUND FACILITIES WITHIN THE PROJECT LIMITS, HOWEVER THERE IS EVIDENCE OF POSSIBLE LINES IN THE FIELD.
- BASED ON THE ATLAS PROVIDED BY NICOR, THE LINE IS CONTINUOUS. THIS SECTION OF THE THE LINE WAS INDETERMINABLE.
- SOME WATER MAINS WERE INDETERMINABLE. THEY ARE DRAWN USING THE ATLAS PROVIDED BY ILLINOIS AMERICAN WATER COMPANY.

LOCATIONS OF UNDERGROUND STRUCTURES OR FACILITIES SHOWN ON PLANS ARE BASED ON AVAILABLE INFORMATION WHICH NEEDS TO BE VERIFIED IN THE FIELD. THE CONTRACTOR IS RESPONSIBLE FOR CONTACTING ALL UTILITY COMPANIES AND VILLAGES INVOLVED BEFORE STARTING WORK



FILE NAME =	USER NAME = bauerdl	DESIGNED -	REVISED -
c:\pwork\pwork\bauderdl\dms89282\10107	26-shd-dra.indgn	DRAWN -	REVISED -
	PLOT SCALE = 50.0000' / in.	CHECKED -	REVISED -
	PLOT DATE = 8/18/2011	DATE -	REVISED -

**STATE OF ILLINOIS
DEPARTMENT OF TRANSPORTATION**

**EXISTING DRAINAGE & UTILITY PLAN
I-55 NORTH & SOUTH FRONTAGE RD.**

SCALE: 1"=50' SHEET NO. OF SHEETS STA. TO STA.

F.A.I. RTE.	SECTION	COUNTY	TOTAL SHEETS	SHEET NO.
55	29T-1	WILL	179	6
CONTRACT NO. 60A56				
FED. ROAD DIST. NO. ILLINOIS FED. AID PROJECT				