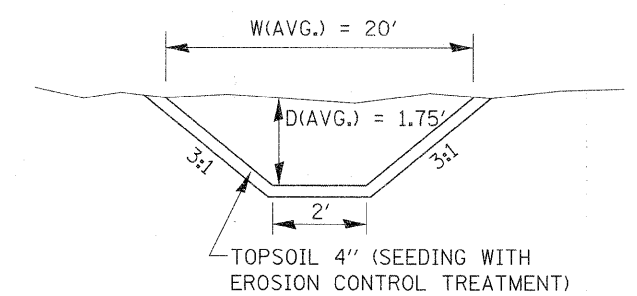


NOTE:
SEE OTHER SHEET FOR
NORTH SIDE OF I-55 AND
N.E. FRONTAGE RD.

"SCHEDULE OF PAY ITEMS RELATED TO SEEDING, SODDING, FOR RESTORATION OF DISTURBED SOIL."
(PROPOSED STORM SEWER & DITCH AT S.E. FRONTAGE RD)

CODE#	PAY ITEM	UNIT	QUANTITY
20200100	EARTH EXCAVATION	CU. YD.	89.5
21101615	TOP SOIL FURNISH & PLACE, 4"	SQ. YD.	963.00
21400100	GRADING & SHAPING DITCHES	FOOT	250.00
25000210	SEEDING, CLASS 2A	ACRE	0.07
25000400	NITROGEN FERTILIZER NUTRIENT	POUND	15.0
25000500	PHOSPHORUS FERTILIZER NUTRIENT	POUND	15.0
25000600	POTASSIUM FERTILIZER NUTRIENT	POUND	15.0
25100630	EROSION CONTROL BLANKET	SQ. YD.	963.0
25200100	SODDING	SQ. YD.	620.0
28000500	PERIMETER EROSION BARRIER	FOOT	758.5



PROP. DITCH SECTION (TYP.) X-X

AVG. BOTTOM OF DITCH =
(698.11 + 698.84 + 699.57 + 700.31 + 701.40) / 5
= 699.65

AVG. GROUND ELEVATION =
(701.58 + 701.43 + 701.27 + 701.31 + 701.40) / 5
= 701.40

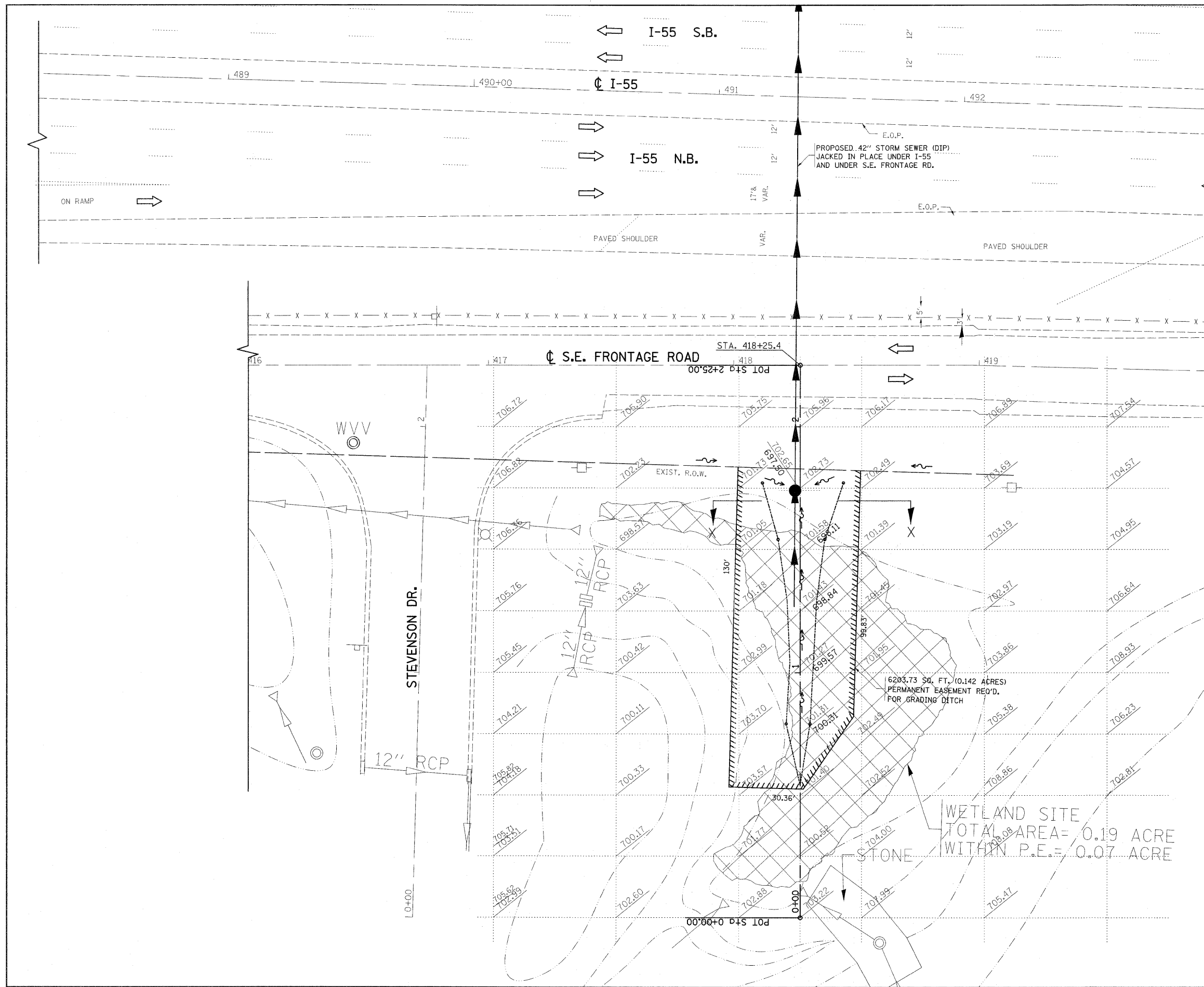
DEFF = 701.40 - 699.65 = 1.75' USE 1.5'

DITCH CROSS SECTION AREA =
(2+20)/2) x 1.75' = 19.25 SQ. FT.

LENGTH OF DITCH = 125'

QUANTITY OF DITCH EXCAVATION AT D/S =
125' x 19.25 SQ. FT. = 2406.25 CU.FT. = 89.1 CU. YD.
(USE 89.5 CU. YD.)

* PAID FOR AS EARTH EXCAVATION



FILE NAME =	USER NAME = lsgsa	DESIGNED -	REVISED -	STATE OF ILLINOIS DEPARTMENT OF TRANSPORTATION	I-55 S.E. FRONTAGE RD. EXISTING GROUND ELEVATIONS SOUTH OF S.E. FRONTAGE RD. STA. 418+25 & DITCH LOCATION				F.A.I. RTE.	SECTION	COUNTY	TOTAL SHEETS	SHEET NO.
ci\pw\work\pwsdat\lsgsa\dms89282\0107409	ghr-dra.dgn	DRAWN -	REVISED -		55	29T-1	WILL	19	8				
PLOT SCALE = 20.0000' / in.		CHECKED -	REVISED -		SCALE: 1"=20' SHEET NO. OF SHEETS STA. 418+25 TO STA. 418+25				CONTRACT NO. 60A56				
PLOT DATE = 8/29/2011		DATE -	REVISED -		ILLINOIS FED. AID PROJECT								

FILE NAME =
PLOT SCALE =
PLOT DATE =