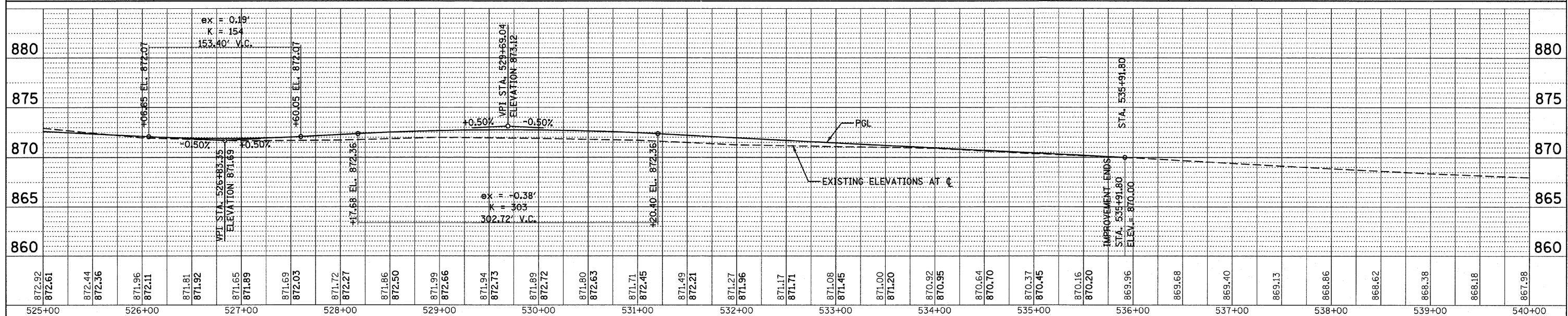
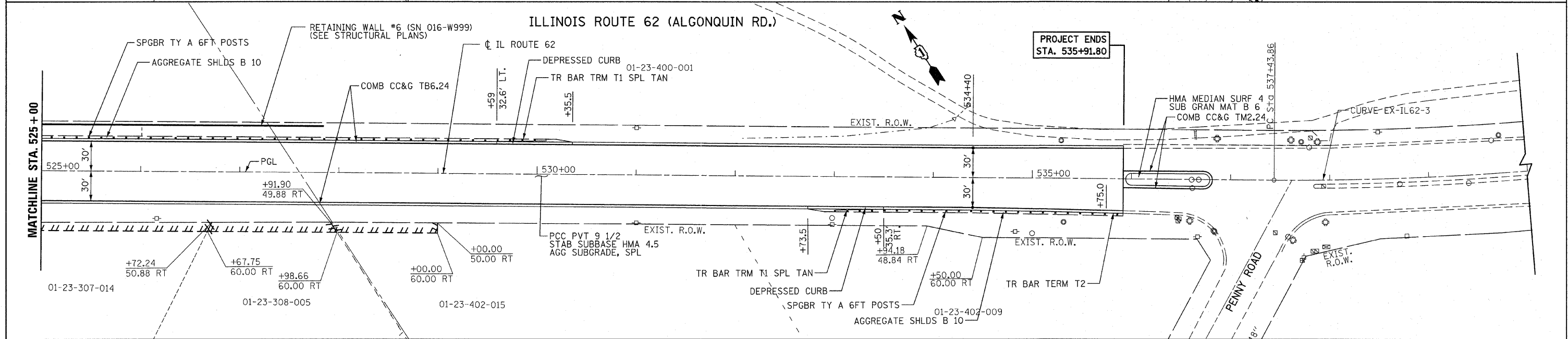
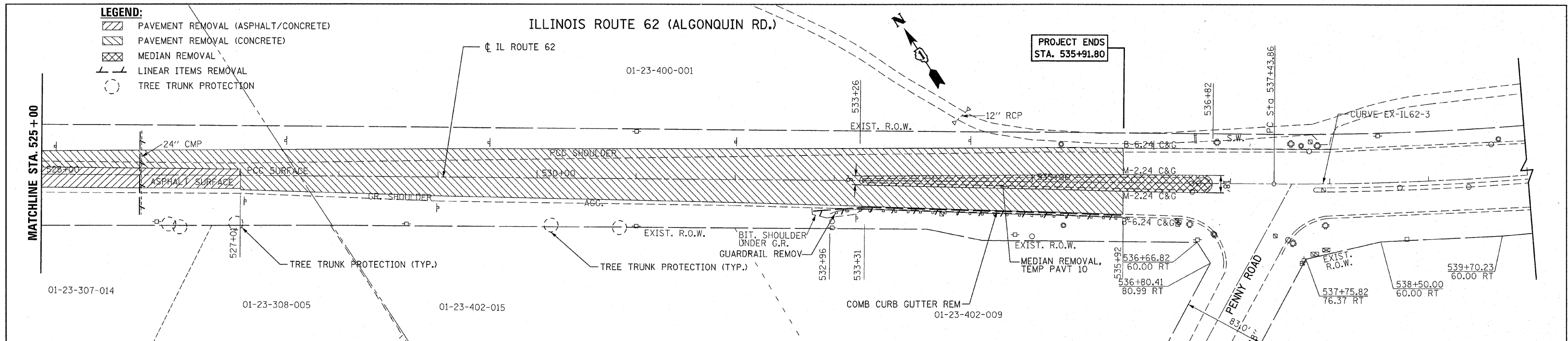


DATE	
BY	
REVISIONS	
NO.	
DESCRIPTION	
DATE	
BY	
REVISIONS	
NO.	
DESCRIPTION	
DATE	
BY	
REVISIONS	
NO.	
DESCRIPTION	

DATE	
BY	
REVISIONS	
NO.	
DESCRIPTION	
DATE	
BY	
REVISIONS	
NO.	
DESCRIPTION	
DATE	
BY	
REVISIONS	
NO.	
DESCRIPTION	



FILE NAME =	DESIGNED RJD	REVISED - ADW; 9/28/11	STATE OF ILLINOIS DEPARTMENT OF TRANSPORTATION	IL RTE 62 (ALGONQUIN RD.) FROM EASTING'S WAY TO PENNY RD. EXISTING & PROPOSED PLAN AND PROFILE	F.A.P. RTE. 339	SECTION 116 Y-1-R-1	COUNTY COOK	TOTAL SHEETS 122	SHEET NO. 16		
DATE JUNE 30, 2011	CHECKED TWL	REVISED -			SCALE: 1"=50'	SHEET NO. 5 OF 5 SHEETS	STA. 525+00	TO STA. 535+91.80	CONTRACT NO. 60I35		
PRIMERA	DRAWN ADW	REVISED -			ILLINOIS FED. AID PROJECT						
		REVISED -									