

DATE	BY	REVISION

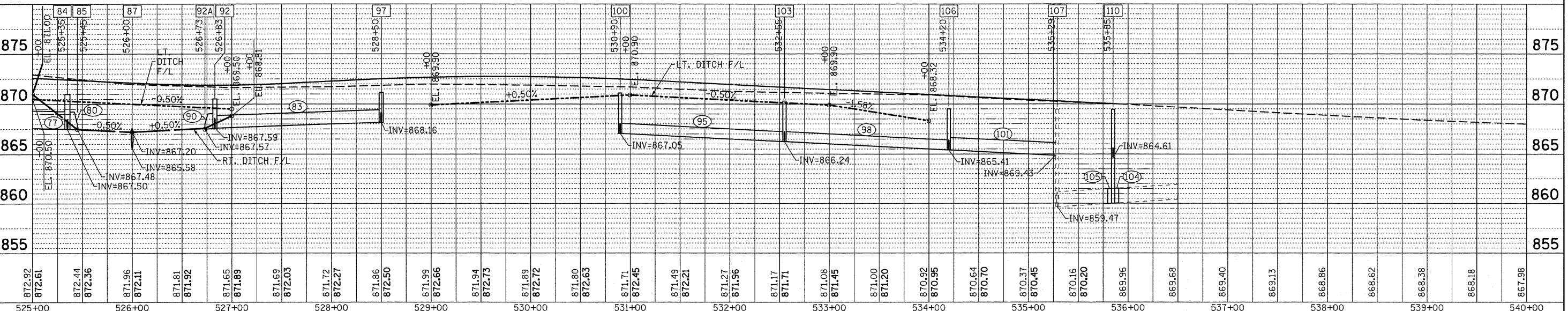
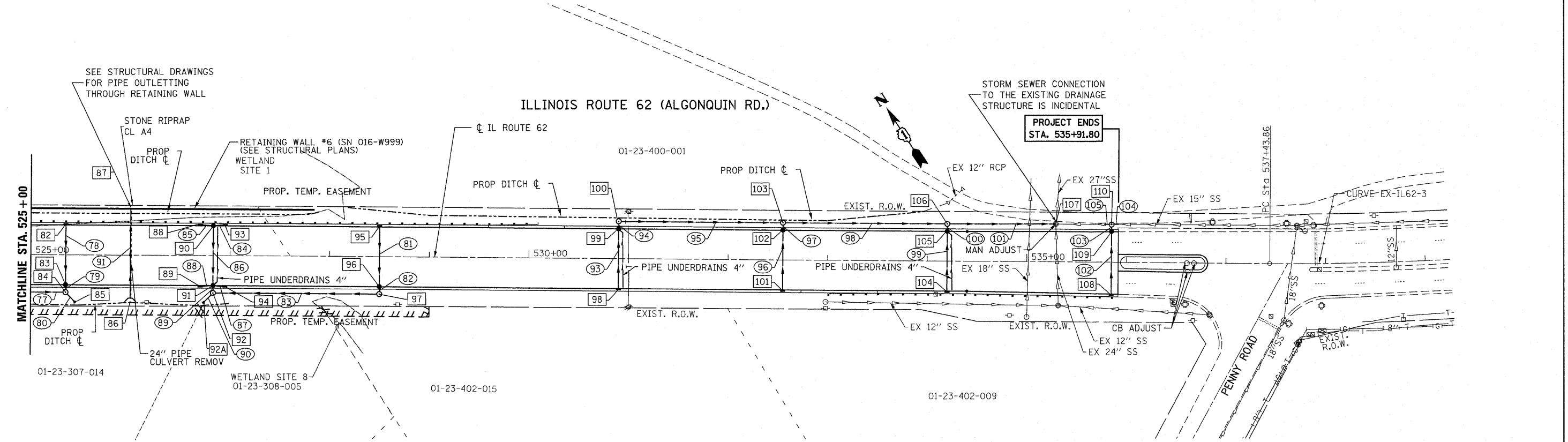
DATE	BY	REVISION

NO.	STATION	OFFSET	TYPE	FRAME	FST	RIM	N. INV.	E. INV.	S. INV.	W. INV.
82	525+35	30.0'LT	INL-A	T-24	*	871.83			867.80	
83	525+35	30.0'RT	CB-A4	T-24	*	871.83	867.52		867.52	
84	525+35	37.5'RT	MH-A5	1-CL	*	871.0	867.50		867.50	867.50
85	525+45	48.0'RT	FES 21	--	--		867.48			
86	526+00	48.0'RT	ES D24-1.5	--	--		867.20			
87	526+00	48.0'LT	RWALL	--	--				865.58	
88	526+70	30.0'LT	INL-A	T-24	*	871.29		867.85		
89	526+70	30.0'RT	INL-A	T-24	*	871.29		867.66		
90	526+83	30.0'LT	CB-A4	T-24	*	871.28		867.80	867.80	867.80
91	526+83	30.0'RT	CB-A4	T-24	*	871.28	867.61	867.61	867.61	867.61
92	526+83	37.5'RT	MH-A4	1-CL	*	870.5	867.59	867.59	867.59	867.59
92A	526+73	48.0'RT	FES 18	--	--		867.57			
93	526+95	30.0'LT	INL-A	T-24	*	871.29			867.85	
94	526+95	30.0'RT	INL-A	T-24	*	871.29			867.66	
95	528+50	30.0'LT	INL-A	T-24	*	871.90			868.47	
96	528+50	30.0'RT	CB-A4	T-24	*	871.90	868.18		868.18	

NO.	STATION	OFFSET	TYPE	FRAME	FST	RIM	N. INV.	E. INV.	S. INV.	W. INV.
97	528+50	37.5'RT	MH-A4	1-CL	*	871.2	868.16		868.16	
98	530+90	30.0'RT	INL-A	T-24	*	871.89	867.39			
99	530+90	30.0'LT	CB-A4	T-24	*	871.89	867.09		867.09	
100	530+90	37.5'LT	MH-A4	1-CL	*	871.1		867.05	867.05	
101	532+55	30.0'RT	INL-A	T-24	*	871.08	866.58			
102	532+55	30.0'LT	CB-A4	T-24	*	871.08	866.28		866.28	
103	532+55	37.5'LT	MH-A4	1-CL	*	870.3		866.24	866.24	866.24
104	534+20	30.0'RT	INL-A	T-24	*	870.25	865.75			
105	534+20	30.0'LT	CB-A4	T-24	*	870.25	865.45		865.45	
106	534+20	37.5'LT	MH-A4	1-CL	*	869.5		865.41	865.41	865.41
107	535+29	38.0'LT	EX	EX			859.47	859.47	859.47	864.86
108	535+85	32.0'RT	INL-A	T-24	*	869.43	864.93			
109	535+85	30.5'LT	CB-A4	T-24	*	869.43	864.61		864.61	
110	535+85	38.0'LT	MH-A4	1-CL	*	869.3		859.9±	864.58	859.9±

NO.	TYPE	UPSTREAM STATION	DOWNSTREAM STATION	MAT.	SIZE	SLOPE	LIN. FT.	TBF (CYD)
77	SS-T1-A	523+70 37.5 RT	525+35 37.5 RT	RCP	21"	0.25%	160'	--
78	SS-T1-A	525+35 30.0 LT	525+35 30.0 RT	RCP	12"	0.50%	57'	9
79	SS-T1-A	525+35 30.0 RT	525+35 37.5 RT	RCP	12"	0.70%	3'	1
80	SS-T1-A	525+35 37.5 RT	525+45 48.0 RT	RCP	21"	0.34%	6'	--
81	SS-T1-A	528+50 30.0 LT	528+50 30.0 RT	RCP	12"	0.50%	57'	8
82	SS-T1-A	528+50 30.0 RT	528+50 37.5 RT	RCP	12"	0.60%	4'	1
83	SS-T1-A	528+50 37.5 RT	526+83 37.5 RT	RCP	15"	0.35%	163'	--
84	SS-T1-A	526+95 30.0 LT	526+83 30.0 LT	RCP	12"	0.60%	9'	2
85	SS-T1-A	526+70 30.0 LT	526+83 30.0 LT	RCP	12"	0.50%	10'	2
86	SS-T1-A	526+83 30.0 LT	526+83 30.0 RT	RCP	15"	0.34%	56'	7
87	SS-T1-A	526+95 30.0 RT	526+83 30.0 RT	RCP	12"	0.60%	9'	2
88	SS-T1-A	526+70 30.0 RT	526+83 30.0 RT	RCP	12"	0.50%	10'	2
89	SS-T1-A	526+83 30.0 RT	526+83 37.5 RT	RCP	15"	0.60%	4'	1
90	SS-T1-A	526+83 37.5 RT	526+73 48.0 RT	RCP	18"	0.31%	6'	--
91	PC-T1-A	526+00 48.0 RT	526+00 48.0 LT	RCP	24"	1.72%	94'	23

NO.	TYPE	UPSTREAM STATION	DOWNSTREAM STATION	MAT.	SIZE	SLOPE	LIN. FT.	TBF (CYD)
92	SS-T1-A	526+00 37.5 LT	526+00 48.0 LT	RCP	30"	1.65%	8'	--
93	SS-T1-A	530+90 30.0 RT	530+90 30.0 LT	RCP	12"	0.50%	4'	1
94	SS-T1-A	530+90 30.0 LT	530+90 37.5 LT	RCP	12"	0.50%	4'	1
95	SS-T1-A	530+90 37.5 LT	532+55 37.5 LT	RCP	12"	0.50%	161'	--
96	SS-T1-A	532+55 30.0 RT	532+55 30.0 LT	RCP	12"	0.50%	58'	12
97	SS-T1-A	532+55 30.0 LT	532+55 37.5 LT	RCP	12"	0.50%	4'	1
98	SS-T1-A	532+55 37.5 LT	534+20 37.5 LT	RCP	12"	0.50%	161'	--
99	SS-T1-A	534+20 30.0 RT	534+20 30.0 LT	RCP	12"	0.50%	58'	12
100	SS-T1-A	534+20 30.0 LT	534+20 37.5 LT	RCP	12"	0.50%	4'	1
101	SS-T1-A	534+20 37.5 LT	535+29 38.0 LT	RCP	15"	0.50%	97'	--
102	SS-T1-A	535+85 32.0 RT	535+85 30.5 LT	RCP	12"	0.50%	61'	13
103	SS-T1-A	535+85 30.5 LT	535+85 38.0 LT	RCP	12"	0.43%	3'	1
104	SS-T2-A	535+79 38.0 LT	535+85 38.0 LT	RCP	15"	EX	4'	--
105	SS-T2-A	535+91 38.0 LT	535+85 38.0 LT	RCP	15"	EX	4'	--



FILE NAME = ...D160135-sht-drain_04.dgn	DESIGNED NS	REVISED - 10/21/2011 N.W.S.	STATE OF ILLINOIS DEPARTMENT OF TRANSPORTATION				IL RTE 62 (ALGONQUIN RD.) FROM EASTING'S WAY TO PENNY RD. DRAINAGE & UTILITIES PLAN AND PROFILE	F.A.P. RTE. 339	SECTION 116 Y-1-R-1	COUNTY COOK	TOTAL SHEETS 122	SHEET NO. 31
Primera	DRAWN NS	REVISIONS -	SCALE: 1"=50'				SHEET NO. 4 OF 4 SHEETS	STA. 525+00 TO STA. 535+91.80	CONTRACT NO. 60135			
CHECKED SF	DATE JUNE 30, 2011	REVISIONS -	ILLINOIS/FED. AID PROJECT									