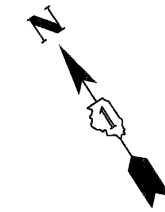
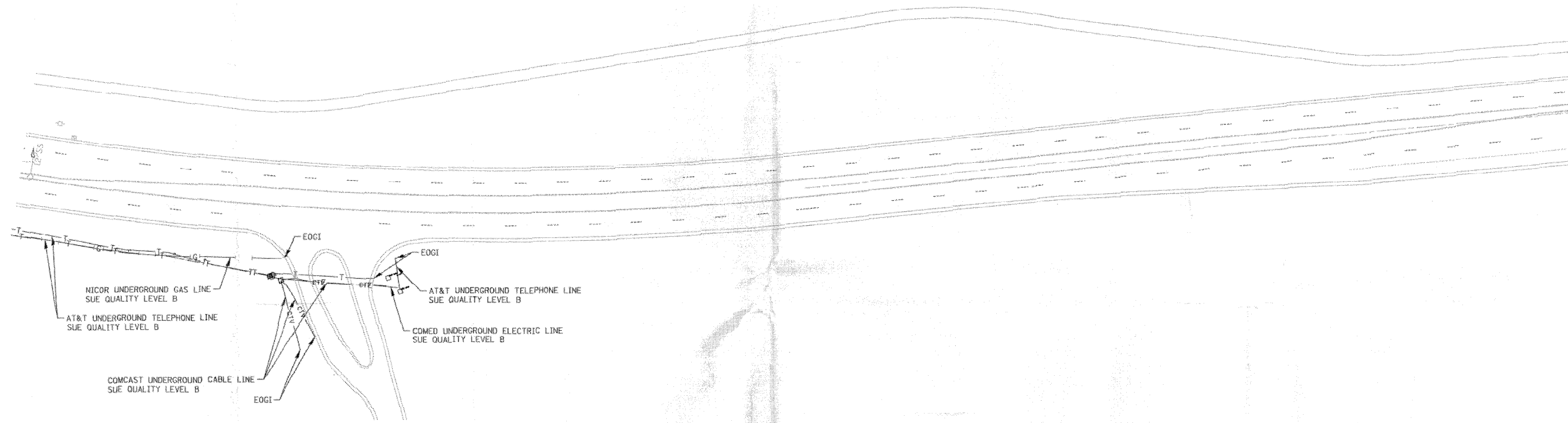


PLAN	SURVEYED	DATE
	PLOTTED	
	ALIGNED	
	CHECKED	
	FILED	
	CADD FILE NAME	
NO.		

PLAN	SURVEYED	DATE
	PLOTTED	
	ALIGNED	
	CHECKED	
	FILED	
	CADD FILE NAME	
NO.		



STATE OF ILLINOIS )  
COUNTY OF COOK ) S.S.

UTILITIES SHOWN HEREON HAVE BEEN INVESTIGATED BY ASE IN ACCORDANCE WITH SUE INDUSTRY STANDARDS QUALITY LEVEL B (QLB). ALL OTHER INFORMATION SHOWN HAS BEEN PROVIDED BY OTHERS.

FIELD WORK WAS PERFORMED BETWEEN THE 7TH OF JULY AND 14TH DAY OF JULY, A.D., 2010.

IN WITNESS WHEREOF, I HAVE HEREUNTO SET MY HAND AND SEAL THIS 5TH DAY OF AUGUST A.D., 2010. CHICAGO, IL.



*Steven M. Riems*  
STEVEN M. RIEMS - ILLINOIS PROFESSIONAL ENGINEER NUMBER 62-044619  
MY LICENSE EXPIRES 11/30/2011

**AMERICAN**  
SURVEYING & ENGINEERING, P.C.  
SURVEYORS - ENGINEERS  
GEODESISTS - MAPPING SCIENTISTS  
Chicago: 312-277-2000 / Fax 312-277-2002  
Dixon: 815-288-6231 / Fax 815-288-6277  
Aurora: 630-897-4105 / Fax 630-897-4121  
Illinois Professional Design Firm No. 184-003192

**LEGEND**

—T—	EXISTING UNDERGROUND TELEPHONE
—W—	EXISTING UNDERGROUND WATER
—E—	EXISTING UNDERGROUND ELECTRIC
—G—	EXISTING UNDERGROUND GAS
—CTV—	EXISTING UNDERGROUND CABLE TV
EOGI	END OF GEOPHYSICAL INFORMATION

FILE NAME =  
...ND160135-100T\_SUE\_06.dgn



DESIGNED	RJD	REVISED	-
DRAWN	GEW	REVISED	-
CHECKED	TWL	REVISED	-
DATE	JUNE 30, 2011	REVISED	-

**STATE OF ILLINOIS**  
**DEPARTMENT OF TRANSPORTATION**

**IL RTE 62 (ALGONQUIN RD.) FROM EASTING'S WAY TO PENNY RD.**  
**SUE INVESTIGATION OF UNDERGROUND UTILITIES**

SCALE: 1"=50' SHEET NO. 6 OF 6 SHEETS STA. 540+00 TO STA.

F.A.P. RTE.	SECTION	COUNTY	TOTAL SHEETS	SHEET NO.
339	116 Y-1-R-1	COOK	122	37
			CONTRACT NO. 60135	
ILLINOIS FED. AID PROJECT				