







PLAN	SURVEYED	DATE
	PLOTTED	BY
	CHECKED	
	BY	
	DATE	
	NO. OF WAYS CHECKED	
	CADD FILE NAME	
	NO.	

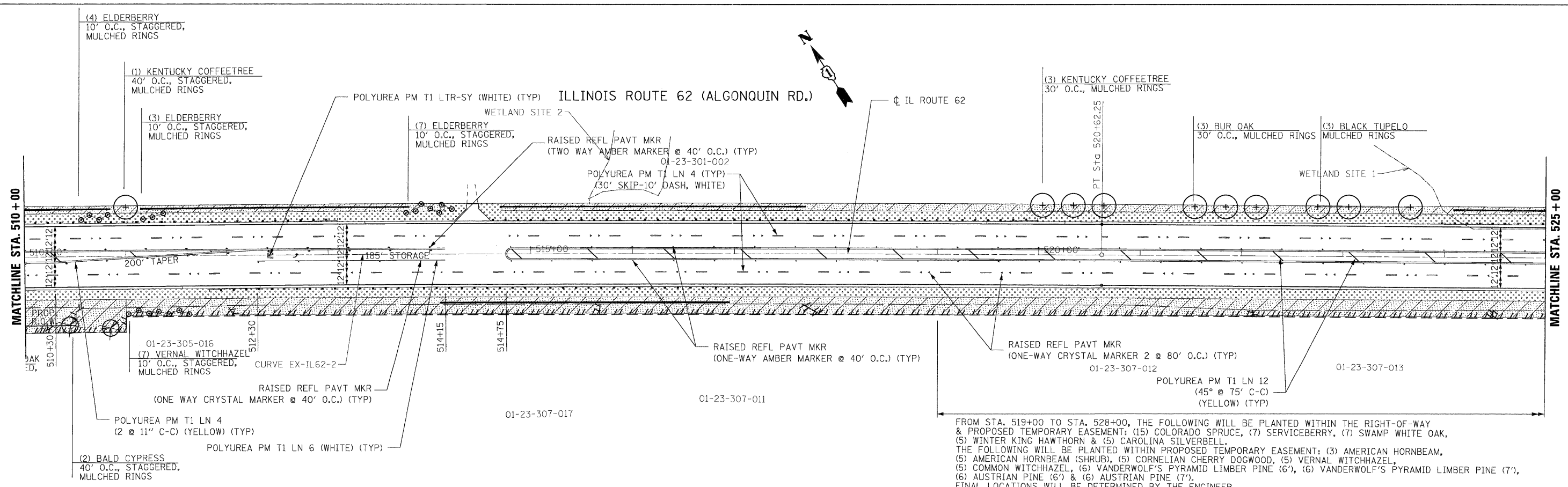
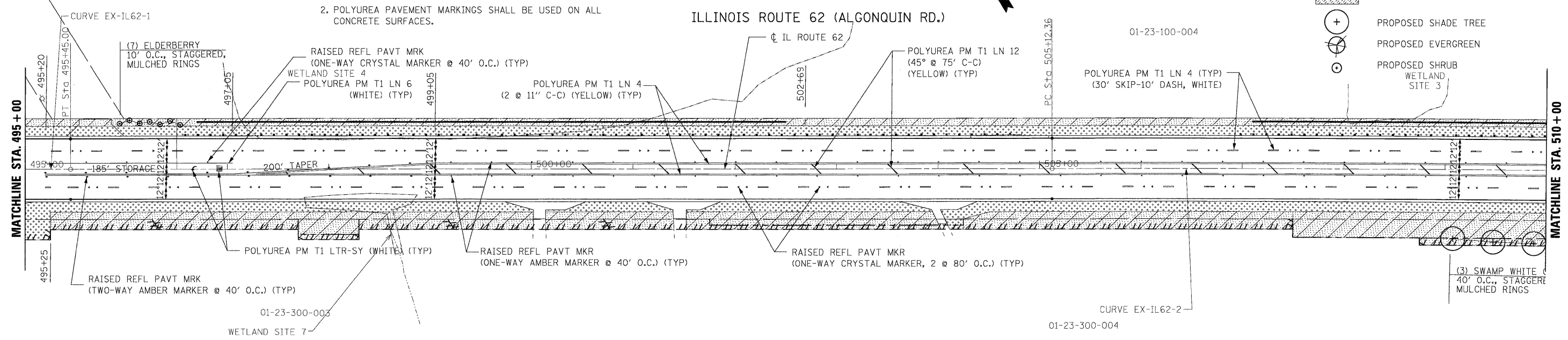
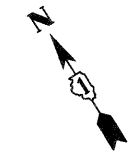
PLAN	SURVEYED	DATE
	PLOTTED	BY
	CHECKED	
	BY	
	DATE	
	NO. OF WAYS CHECKED	
	CADD FILE NAME	
	NO.	

NOTES:

- REFER TO DISTRICT 1 DETAILS "TYPICAL APPLICATIONS RAISED REFLECTIVE PAVEMENT MARKERS (SNOW-PLOW RESISTANT)" AND "TYPICAL PAVEMENT MARKING" FOR ADDITIONAL INFORMATION.
- POLYUREA PAVEMENT MARKINGS SHALL BE USED ON ALL CONCRETE SURFACES.

LANDSCAPING LEGEND

-  SEEDING, CLASS 2A
-  SEEDING, CLASS 4
-  SODDING, SALT TOLERANT
-  PROPOSED SHADE TREE
-  PROPOSED EVERGREEN
-  PROPOSED SHRUB



FILE NAME =
...N0168135-shr-pmk_02.dgn



DESIGNED	ADW	REVISED	-
DRAWN	MHL	REVISED	-
CHECKED	RJD	REVISED	-
DATE	JUNE 30, 2011	REVISED	-

**STATE OF ILLINOIS
DEPARTMENT OF TRANSPORTATION**

**IL RTE 62 (ALGONQUIN RD.) FROM EASTING'S WAY TO PENNY RD.
PAVEMENT MARKING & LANDSCAPING PLAN**

F.A.P. RTE.	SECTION	COUNTY	TOTAL SHEETS	SHEET NO.
339	116 Y-1-R-1	COOK	122	46
CONTRACT NO. 60135				
[ILLINOIS] FED. AID PROJECT				

SCALE: 1"=50' SHEET NO. 2 OF 3 SHEETS STA. 495+00 TO STA. 525+00