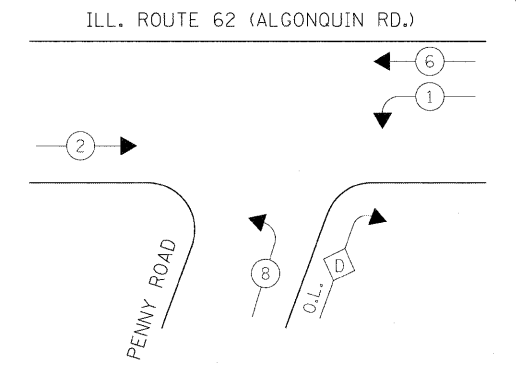
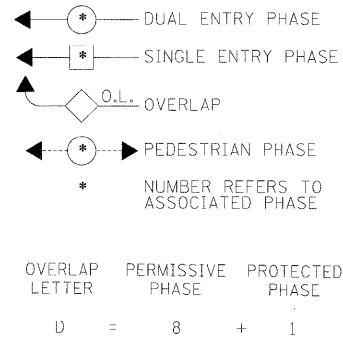


CONTROLLER SEQUENCE



EXISTING PHASE DESIGNATION DIAGRAM

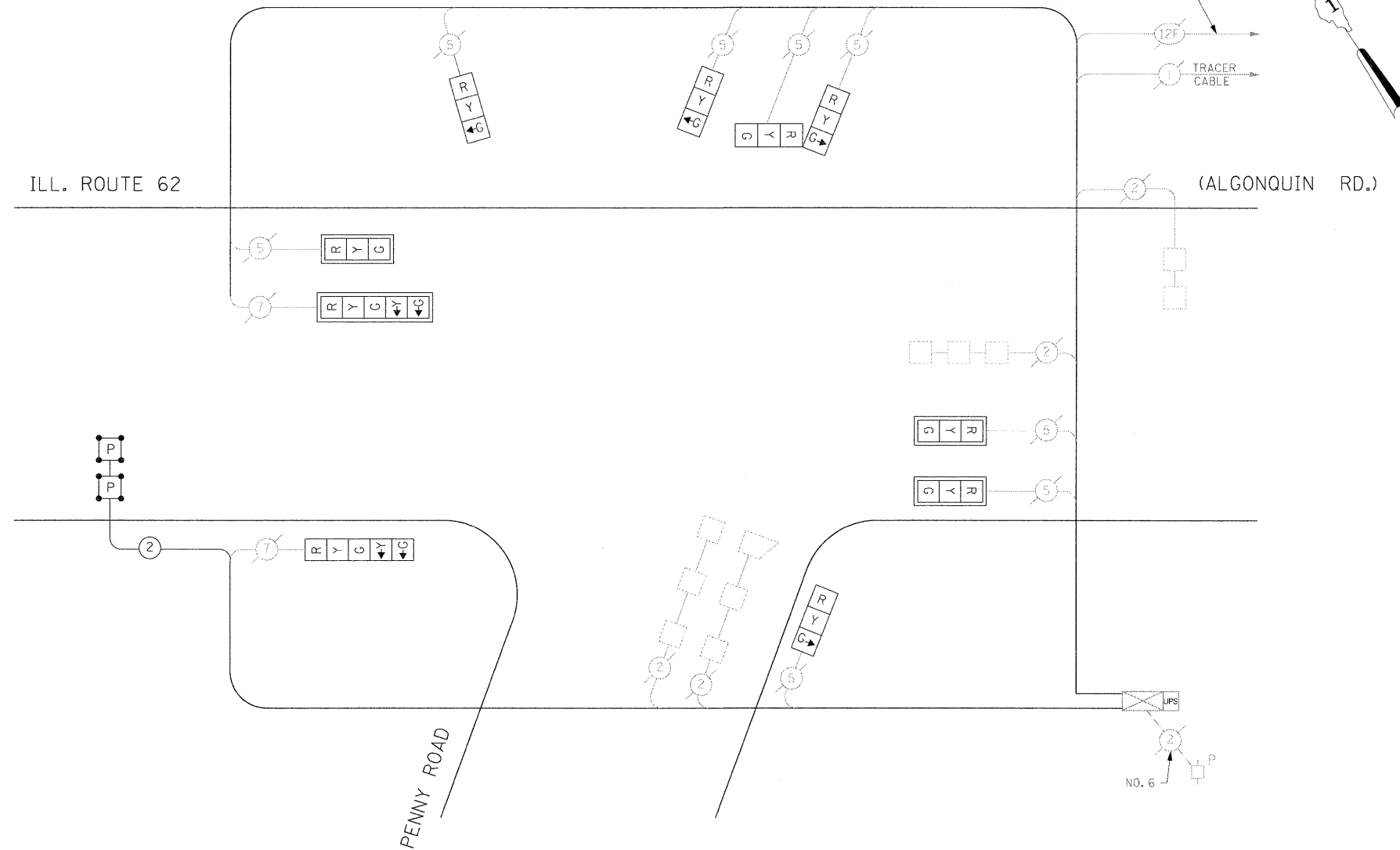
LEGEND



SCHEDULE OF QUANTITIES

QUANTITY	UNIT	ITEM
241	FOOT	CONDUIT IN TRENCH, 2" DIA., GALVANIZED STEEL
1	EACH	HANDHOLE
241	FOOT	TRENCH AND BACKFILL FOR ELECTRICAL WORK
1	EACH	UNINTERRUPTIBLE POWER SUPPLY
432	FOOT	ELECTRIC CABLE IN CONDUIT, LEAD-IN, NO. 14 1 PAIR
1	EACH	DRILL EXISTING HANDHOLE
3	EACH	SIGNAL HEAD, LED, 1-FACE, 3-SECTION, MAST-ARM MOUNTED
3	EACH	SIGNAL HEAD, LED, 1-FACE, 3-SECTION, BRACKET MOUNTED
1	EACH	SIGNAL HEAD, LED, 1-FACE, 5-SECTION, BRACKET MOUNTED
1	EACH	SIGNAL HEAD, LED, 1-FACE, 5-SECTION, MAST ARM MOUNTED
1	EACH	SIGNAL HEAD, LED, 2-FACE, 3-SECTION, BRACKET MOUNTED
4	EACH	TRAFFIC SIGNAL BACKPLATE, LOUVERED, ALUMINUM
76	FOOT	PREFORMED DETECTOR LOOP
1	EACH	TEMPORARY TRAFFIC SIGNAL INSTALLATION
185	FOOT	REMOVE ELECTRIC CABLE FROM CONDUIT
1	EACH	REMOVE EXISTING HANDHOLE
1	EACH	TEMPORARY TRAFFIC SIGNAL TIMING

ILL. ROUTE 62



MODIFIED CABLE PLAN

(NOT TO SCALE)

I.D.O.T. TRAFFIC SIGNAL INSTALLATION ELECTRICAL SERVICE REQUIREMENTS					TOTAL WATTAGE
TYPE	NO LAMPS	WATTAGE		% OPERATION	
		INCAND.	LED		
SIGNAL (RED)	10	135	17	0.50	85
(YELLOW)	10	135	25	0.25	62.5
(GREEN)	10	135	15	0.25	37.5
ARROW	4	135	12	0.10	4.8
PED. SIGNAL		90	25	1.00	
CONTROLLER	1	100	100	1.00	100
ILLUM. SIGN			25	0.05	
FLASHER				0.50	
ENERGY COSTS TO:					TOTAL = 289.8

ILLINOIS DEPARTMENT OF TRANSPORTATION  
201 WEST CENTER COURT  
SCHAMBERG, ILLINOIS 60196-1096

ENERGY SUPPLY CONTACT: CURTIS TOPPS  
PHONE: (630) 691-4356  
COMPANY: COMMONWEALTH EDISON

THE TRAFFIC SIGNAL CONTROL EQUIPMENT FOR THIS PROJECT SHALL BE "ECONOLITE" TO MATCH THE EXISTING ADJACENT SYSTEM.