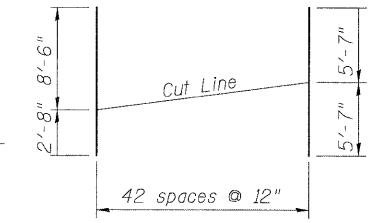
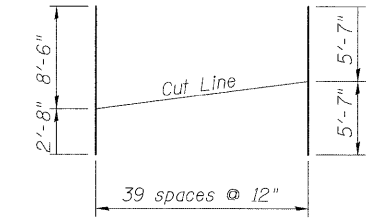


Min. Bar Lap
#5 = 3'-3"



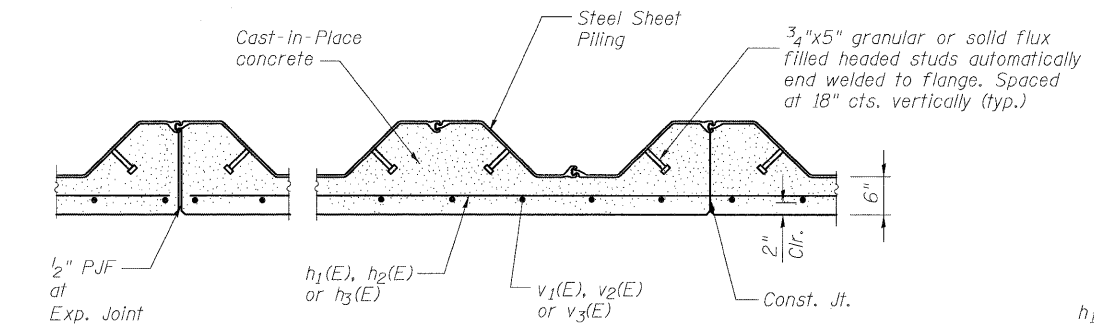
Bar v1(E) Cutting Diagram



Bar v3(E) Cutting Diagram

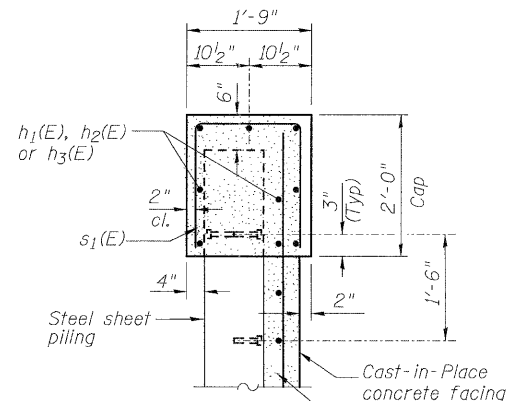
BAR s1(E)

CONCRETE FACING ELEVATION
(Front Face View)

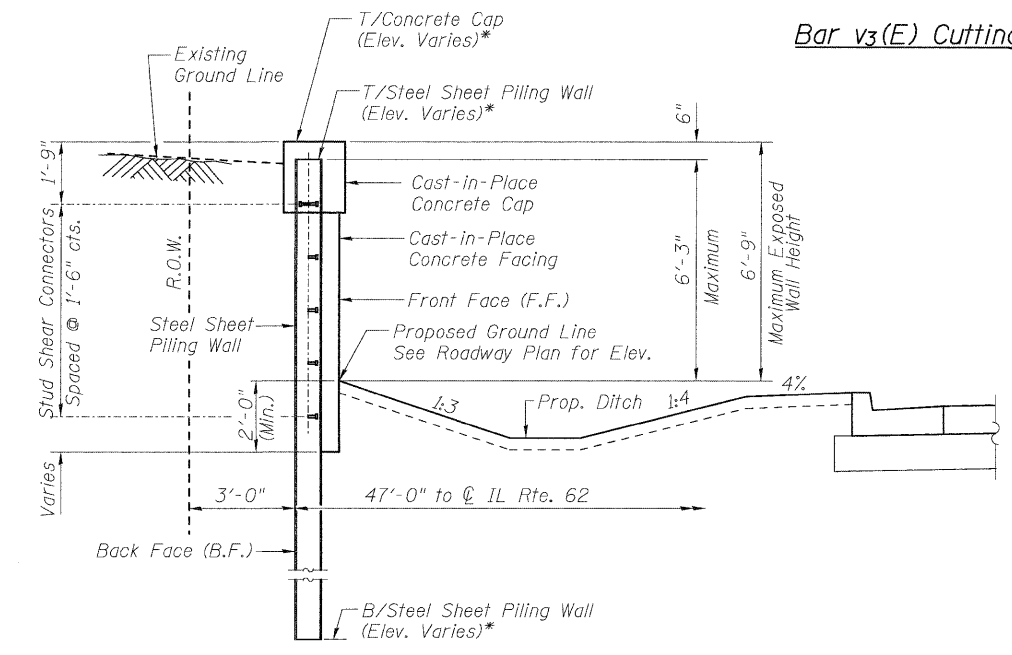


AT EXPANSION JOINT AT CONSTRUCTION JOINT

SECTION D-D



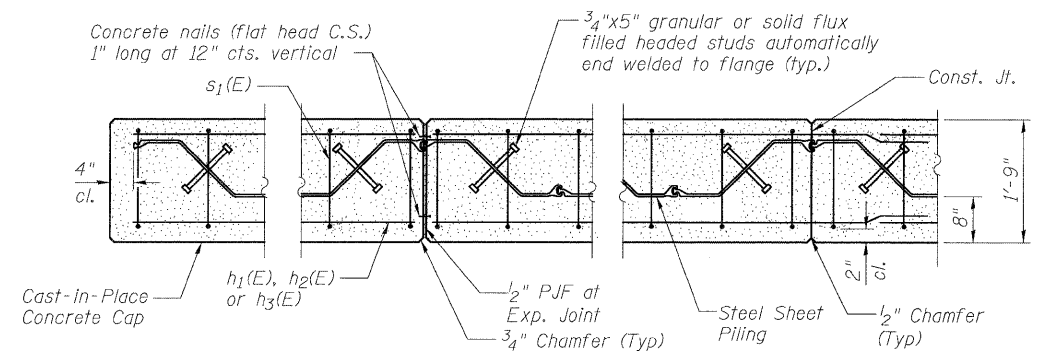
SECTION B-B



SECTION A-A

*See Sheet S1 of S3 Sheets for Elevations.

- Notes:
- The Expansion Joints shall be located at the nearest sheet piling interlock to the indicated spacing shown.
 - Order bars v1(E) & v3(E) in full length. Cut in field and use the remainder in the other half of the wall.



AT WALL END AT EXPANSION JOINT AT CONSTRUCTION JOINT

SECTION C-C



USER NAME =	DESIGNED - JPM	REVISED -
PLLOT SCALE =	CHECKED - JXH	REVISED -
PLLOT DATE =	DRAWN - JPM	REVISED -
	CHECKED - JXH/TPG	REVISED -

STATE OF ILLINOIS
DEPARTMENT OF TRANSPORTATION

RETAINING WALL DETAIL
STRUCTURE NO. 016-W995

SHEET NO. S2 OF S3 SHEETS

F.A.P. RTE.	SECTION	COUNTY	TOTAL SHEETS	SHEET NO.
339	116 Y-1-R-1	COOK	122	67
CONTRACT NO. 60135				
ILLINOIS FED. AID PROJECT				