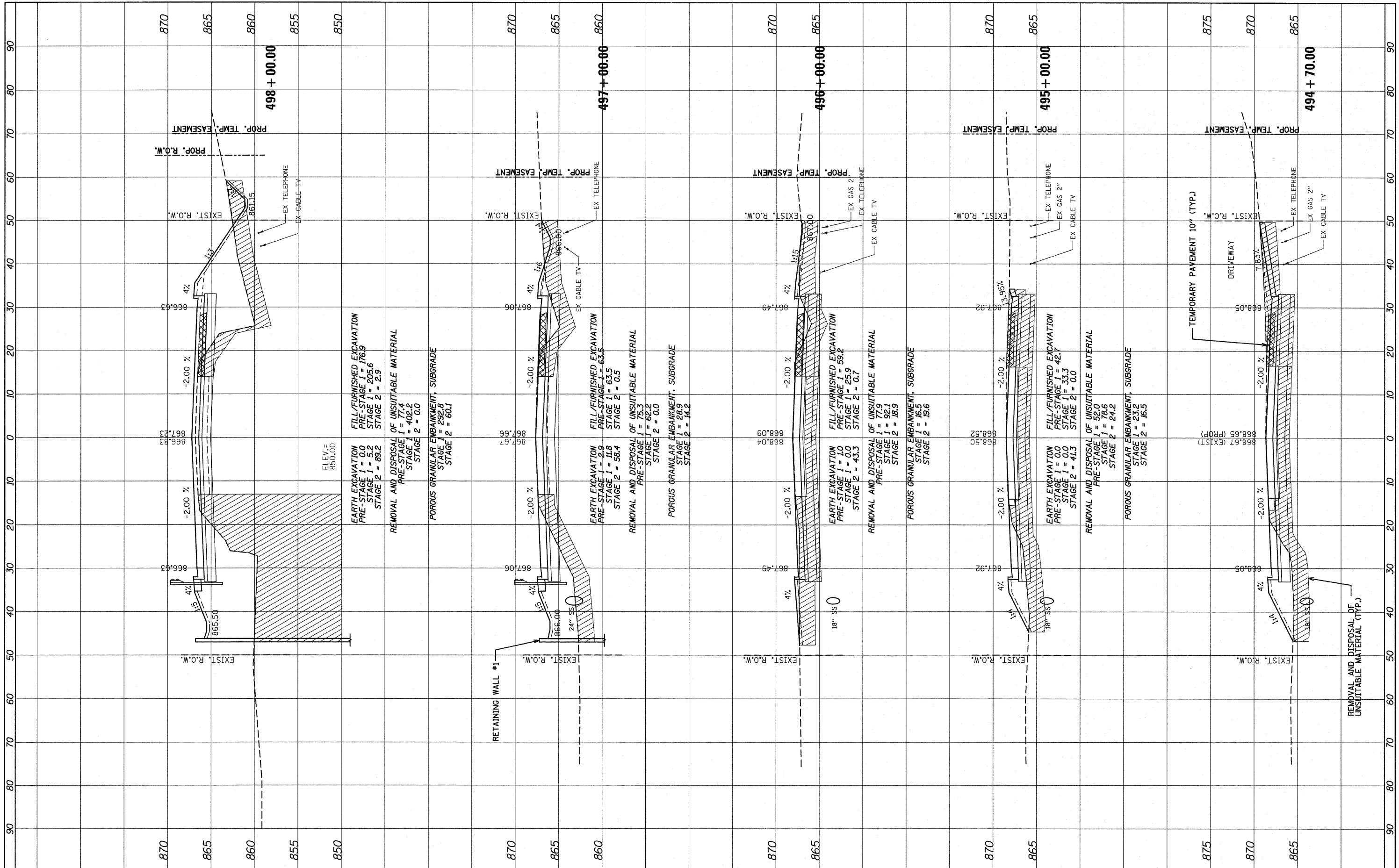


FINAL SURVEY BY DATE
 SURVEYED BY DATE
 NOTE BOOK NO.
 TEMPLATE AREAS CHECKED

ORIGINAL SURVEY BY DATE
 SURVEYED BY DATE
 NOTE BOOK NO.
 TEMPLATE AREAS CHECKED



FILE NAME = #PND0335-sht-xasht.dgn	USER NAME = #USER#	DESIGNED - ADW	REVISED - 10/21/2011 N.W.S.	STATE OF ILLINOIS DEPARTMENT OF TRANSPORTATION	IL RTE 62 (ALGONQUIN RD.) FROM EASTING'S WAY TO PENNY RD. CROSS SECTIONS		F.A.P. RTE. 339	SECTION 116 Y-1-R-1	COUNTY COOK	TOTAL SHEETS 122	SHEET NO. 102	
PLOT SCALE = #SCALE#	CHECKED - RJD	REVISOR -	REVISOR -		SCALE: 1"=10'(H); 1"=5'(V)		SHEET NO. 4 OF 13 SHEETS		STA. 494+70.00 TO STA. 498+00.00		CONTRACT NO. 60I35	
PLOT DATE = #DATE#	DATE - JUNE 30, 2011	REVISOR -	REVISOR -		ILLINOIS FED. AID PROJECT							