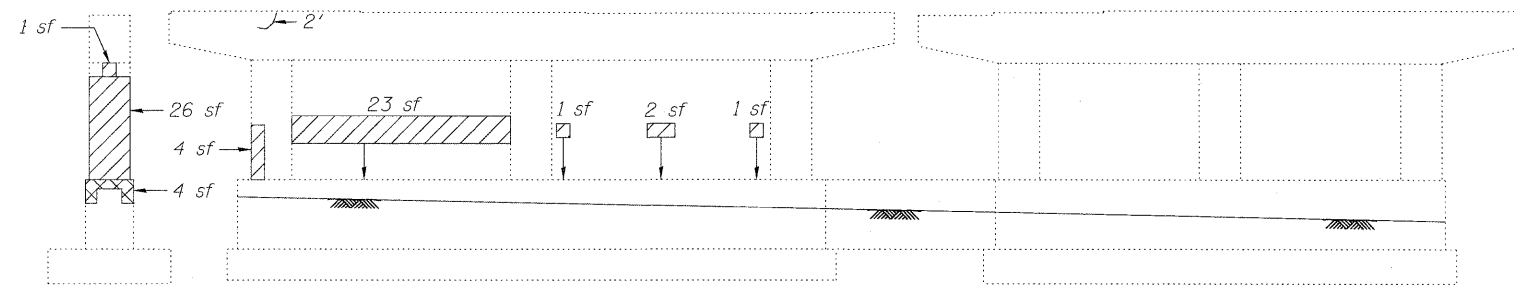
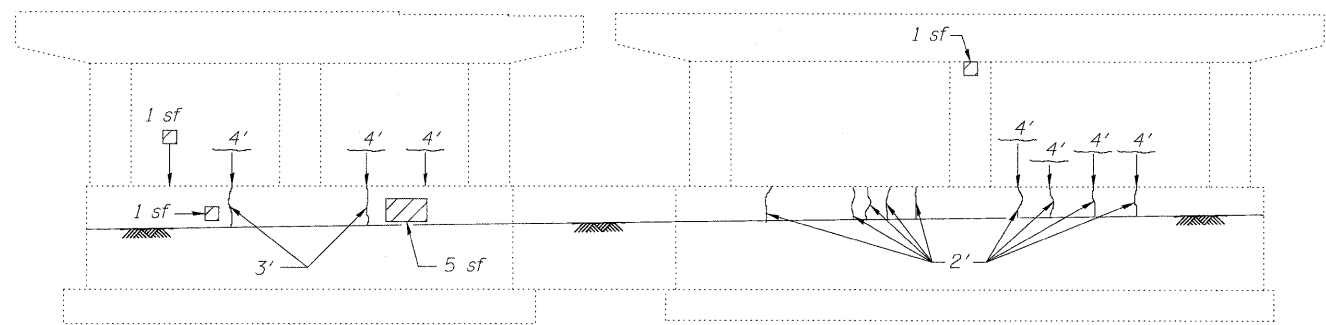


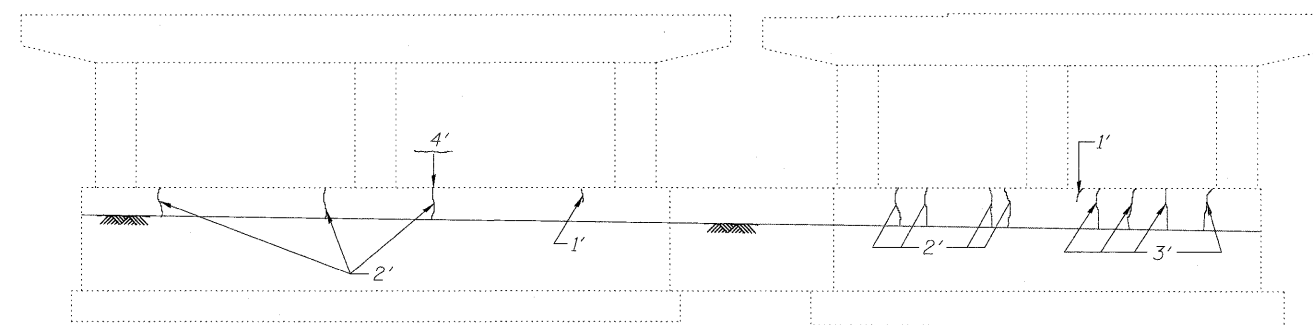
PIER 1
(Looking East)



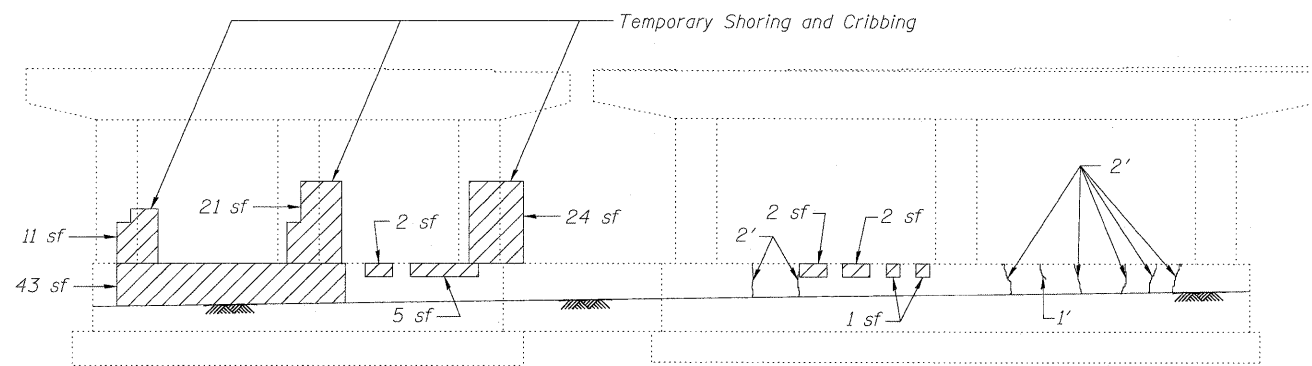
PIER 1
(Looking West)



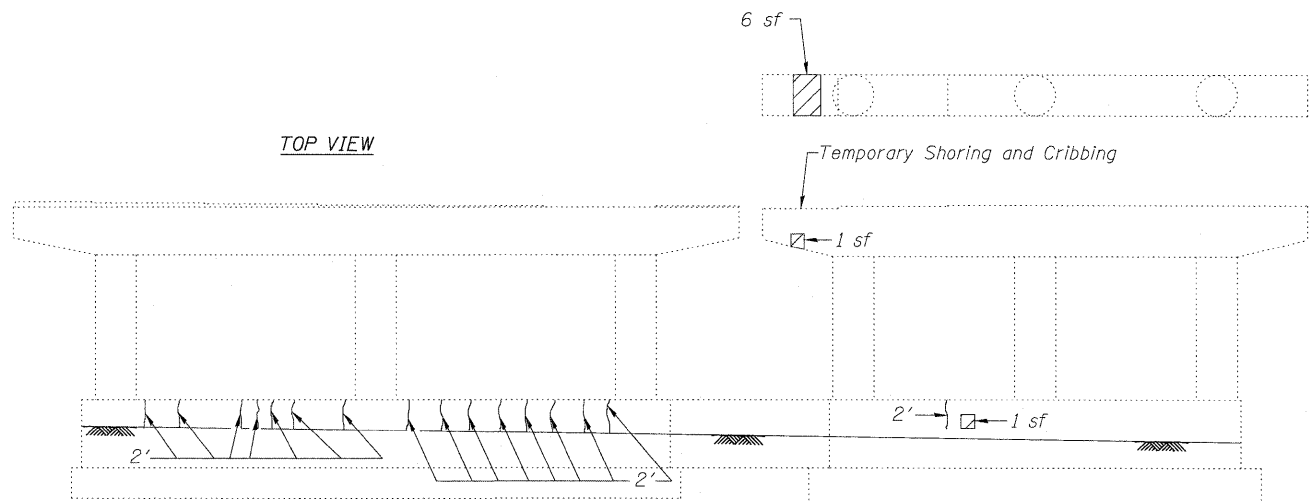
PIER 2
(Looking East)



PIER 2
(Looking West)



PIER 3
(Looking East)



PIER 3
(Looking West)

LEGEND

- Structural Repair of Concrete (Depth equal to or less than 5 in.)
- Structural Repair of Concrete (Depth greater than 5 in.)
- Epoxy Crack Injection
- sf Square Feet

Notes:

Temporary Shoring and Cribbing required to complete Structural Repair of Concrete shall be paid under Jacking and Cribbing. When performing the pier repair and bearing replacement at the same time, the structure shall not be jacked up from the pier. The weight must be taken off the pier in the area of the pier repair. Concrete must be cured to minimum strength for the repair before bearing can be replaced and weight put back on the pier, according to special provisions.

Repair of the existing piers shall include but may not be limited to the areas shown. The actual area to be repaired will be determined by the Engineer at the time of construction.

BILL OF MATERIAL

ITEM	UNIT	TOTAL
Structural Repair of Concrete (Depth equal to or less than 5 in.)	Sq. Ft.	210
Structural Repair of Concrete (Depth greater than 5 in.)	Sq. Ft.	4
Epoxy Crack Injection	Foot	152
Jacking and Cribbing	Each	4



USER NAME =	DESIGNED - MTH	REVISED -
FILE NAME =	CHECKED - ADB	REVISED -
PLOT SCALE =	DRAWN - AJF	REVISED -
PLOT DATE =	CHECKED - MTH	REVISED -

STATE OF ILLINOIS
DEPARTMENT OF TRANSPORTATION

PIER REPAIRS
STRUCTURE NO. 045-0037

SHEET NO. 38 OF 39 SHEETS

F.A.P. RTE.	SECTION	COUNTY	TOTAL SHEETS	SHEET NO.
573	61HB-1-R	KANE	110	88
				CONTRACT NO. 60K76
ILLINOIS FED. AID PROJECT				