

F.A.P. RTE.	SECTION	COUNTY	TOTAL SHEETS	SHEET NO.
311	652X-N-3	DUPAGE	34	1
FED. ROAD DIST. NO. 1	ILLINOIS	CONTRACT NO.	60L22	

D-91-658-10

**STATE OF ILLINOIS**  
**DEPARTMENT OF TRANSPORTATION**  
**DIVISION OF HIGHWAYS**  
**PROPOSED**  
**HIGHWAY PLANS**

**F.A.P. 311: US ROUTE 34**  
**AT NORTH AURORA ROAD/RAYMOND DRIVE**  
**SECTION: 652X-N-3**  
**LOCATION OF PROJECT**  
**PROJECT: HSIP-0311(045)**  
**DU PAGE COUNTY**  
**C-91-658-10**

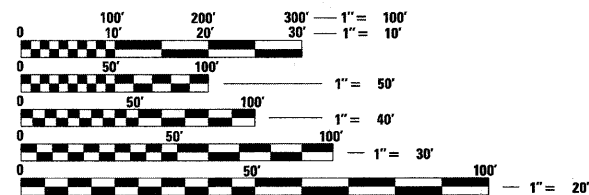


FOR INDEX OF SHEETS, SEE SHEET NO. 2

**DESIGN DESIGNATION**  
**US ROUTE 34 (OGDEN AVE)**  
**FUNCTION CLASSIFICATION: MAJOR ARTERIAL**  
**DESIGN SPEED=45 MPH**  
**POSTED SPEED=40 MPH**  
**NORTH AURORA ROAD**  
**FUNCTIONAL CLASSIFICATION=MINOR ARTERIAL**  
**DESIGN SPEED=45 MPH**  
**POSTED SPEED=40 MPH**  
**RAYMOND DR**  
**FUNCTIONAL CLASSIFICATION=MAJOR ARTERIAL**  
**DESIGN SPEED=45 MPH**  
**POSTED SPEED=40 MPH**

**TRAFFIC DATA**  
**US 34 (OGDEN AVE)**  
**2009 ADT=37,000**  
**N. AURORA RD**  
**2009 ADT=17,300**  
**RAYMOND DR**  
**2009 ADT=26,200**

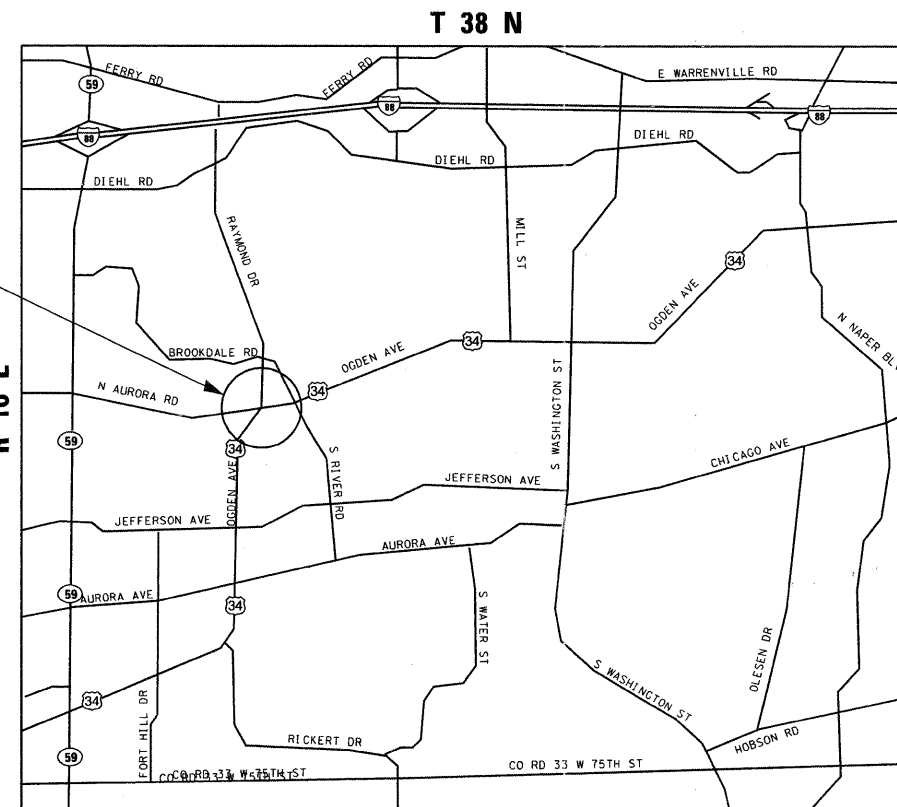
PROJECT LOCATED WITHIN THE CITY OF NAPERVILLE



FULL SIZE PLANS HAVE BEEN PREPARED USING STANDARD ENGINEERING SCALES. REDUCED SIZED PLANS WILL NOT CONFORM TO STANDARD SCALES. IN MAKING MEASUREMENTS ON REDUCED PLANS, THE ABOVE SCALES MAY BE USED.

J.U.L.I.E.  
 JOINT UTILITY LOCATION INFORMATION FOR EXCAVATION  
 1-800-892-0123 OR 811

LOCATION OF PROJECT



SCALE: NTS  
 NAPERVILLE TOWNSHIP

GROSS & NET LENGTH OF PROJECT= 1650 FT = 0.31 MILES



DISTRICT ONE - PLAN PREP ENGINEER: KEN ENG (847) 705-4247

MILLENNIA PROFESSIONAL SERVICES  
 THOMAS V. NGO, P.E.  
 # 062-058379

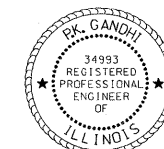
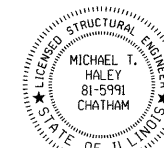
DATE: 05/27/2011  
 SIGNATURE AND SEAL APPLIES TO DRWG NO 1-18 AND 21

LIN ENGINEERING, LTD.  
 MICHAEL T. HALEY, S.E.  
 # 81-5991

DATE: 05/27/2011  
 SIGNATURE AND SEAL APPLIES TO DRWG NO 19 TO 20

GANDHI AND ASSOCIATES INC.  
 P.K. GANDHI, P.E.  
 # 062-034993

DATE: 05/27/2011  
 SIGNATURE AND SEAL APPLIES TO DRWG NO 22 TO 22




STATE OF ILLINOIS  
 DEPARTMENT OF TRANSPORTATION  
 DIVISION OF HIGHWAYS

SUBMITTED May 31 2011  
Piase O'Keefe  
 DEPUTY DIRECTOR OF HIGHWAYS, REGION ENGINEER

July 1 2011  
Scott E. Stitt P.E.  
 acting ENGINEER OF DESIGN AND ENVIRONMENT

July 1 2011  
Christine M. Reed  
 DIRECTOR OF HIGHWAYS, CHIEF ENGINEER

 200 22ND Street, Suite 216, Lombard, IL 60148  
 630.705.0110 voice, 630.839.2566 fax  
 www.mps-il.com

**MILLENNIA PROFESSIONAL SERVICES**

**PRINTED BY THE AUTHORITY  
 OF THE STATE OF ILLINOIS**

CONTRACT NO. 60L22