

US ROUTE 34(OGDEN AVE/RAYMOND DR) ALIGNMENT
 =====
 POINT 110 N 1,861,822.600 E 1,024,585.242 STA = 500+00.00

CURVE C1
 P.I. STATION 504+71.67 N 1,862,161.347 E 1,024,913.448
 DELTA = 11° 08' 02" (LT)
 DEGREE = 5° 19' 17"
 TANGENT = 104.948
 LENGTH = 209.234
 RADIUS = 1,076.729
 EXTERNAL = 5.102
 LONG CHORD = 208.905
 MID. ORD. = 5.078
 P.C. STATION = 503+66.72 N 1,862,085.974 E 1,024,840.420
 P.T. STATION = 505+75.95 N 1,862,249.402 E 1,024,970.546

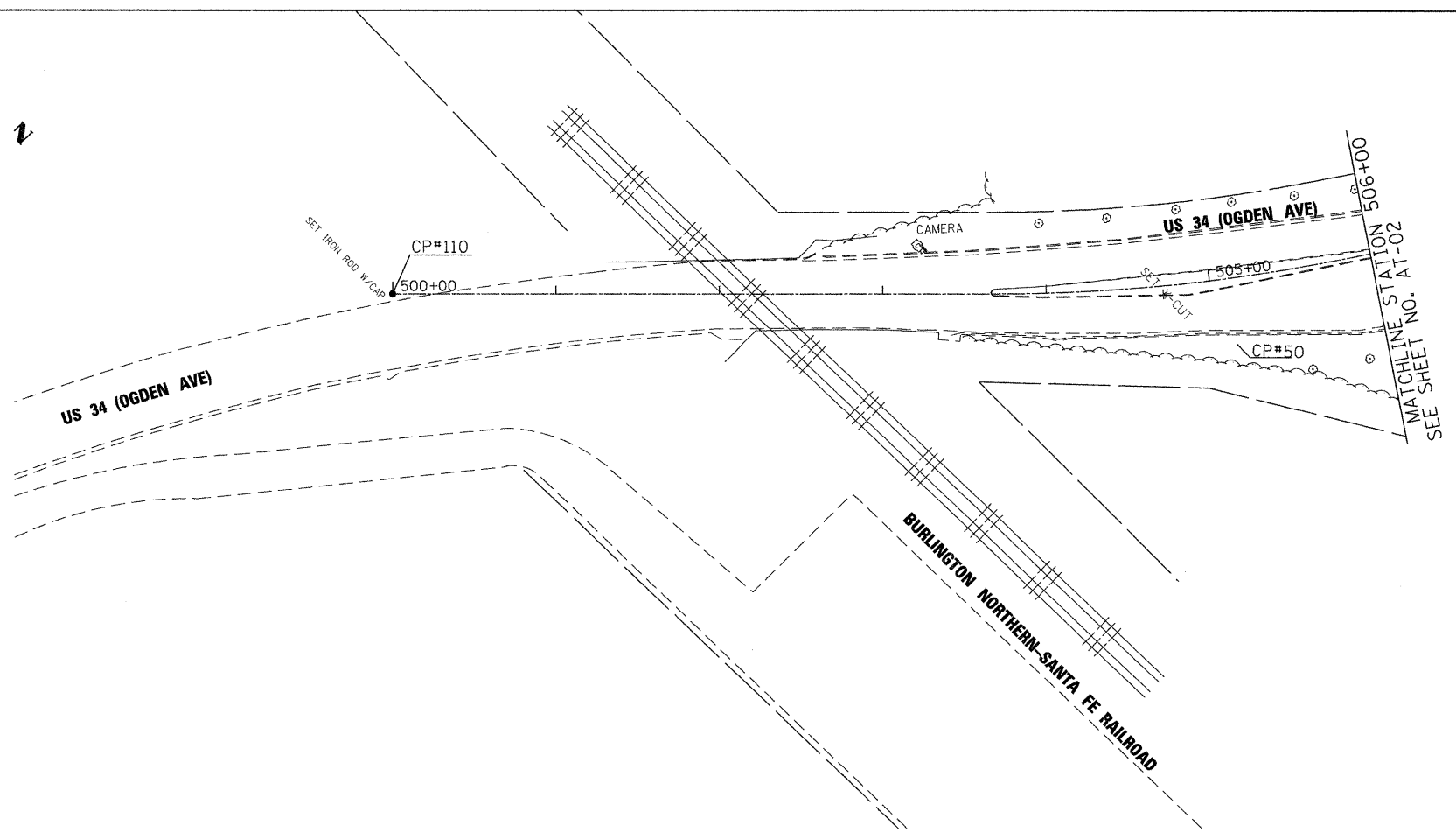
CURVE C2
 P.I. STATION 509+29.82 N 1,862,546.315 E 1,025,163.073
 DELTA = 31° 06' 47" (LT)
 DEGREE = 7° 14' 17"
 TANGENT = 220.368
 LENGTH = 429.852
 RADIUS = 791.588
 EXTERNAL = 30.101
 LONG CHORD = 424.590
 MID. ORD. = 28.999
 P.C. STATION = 507+09.45 N 1,862,361.416 E 1,025,043.179
 P.T. STATION = 511+39.31 N 1,862,766.568 E 1,025,170.178

POINT 104 N 1,863,707.518 E 1,025,200.533 STA = 520+80.75
 =====

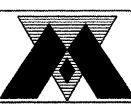
NORTH AURORA/OGDEN AVENUE ALIGNMENT
 =====
 POINT 103 N 1,862,308.281 E 1,024,181.748 STA = 100+00.00

CURVE C3
 P.I. STATION 117+99.78 N 1,862,612.918 E 1,025,955.558
 DELTA = 11° 23' 09" (LT)
 DEGREE = 2° 51' 21"
 TANGENT = 200.000
 LENGTH = 398.683
 RADIUS = 2,006.240
 EXTERNAL = 9.944
 LONG CHORD = 398.027
 MID. ORD. = 9.895
 P.C. STATION = 115+99.78 N 1,862,579.065 E 1,025,758.444
 P.T. STATION = 119+98.46 N 1,862,685.017 E 1,026,142.110

POINT 100 N 1,862,991.474 E 1,026,935.037 STA = 128+48.55
 =====



FILE NAME = P:\2009\MEP\9006_Ver-Vor_P\1\CAD\DWG22_US34\Sh1a\DI60L22-AT02.dwg
 PLOT SCALE = 50.00000 / IN.
 USER NAME = Millennium Professional Services



200 22ND Street, Suite 216, Lombard, IL 60148
 630.785.8118 voice, 630.839.2566 fax
 www.mps-il.com

MILLENNIA PROFESSIONAL SERVICES

DESIGNED - CJD	REVISED -
DRAWN - CJD	REVISED -
CHECKED - TVN	REVISED -
DATE - 5/27/2011	REVISED -

**STATE OF ILLINOIS
 DEPARTMENT OF TRANSPORTATION**

**US ROUTE 34
 AT NORTH AURORA ROAD /RAYMOND DRIVE**

ALIGNMENT, TIES AND BENCHMARKS

SCALE: 1"=50' SHEET NO. 2 OF 2 SHEETS STA. 500+00 TO STA. 506+00

F.A.P. RTE. 311	SECTION 652X-N-3	COUNTY DUPAGE	TOTAL SHEETS 34	SHEET NO. 7
CONTRACT NO. 60L22			FED. ROAD DIST. NO. 1 (ILLINOIS) FED. AID PROJECT	

AT-02

P:\2009\MEP\9006_Ver-Vor_P\1\CAD\DWG22_US34\Sh1a\DI60L22-AT02.dwg