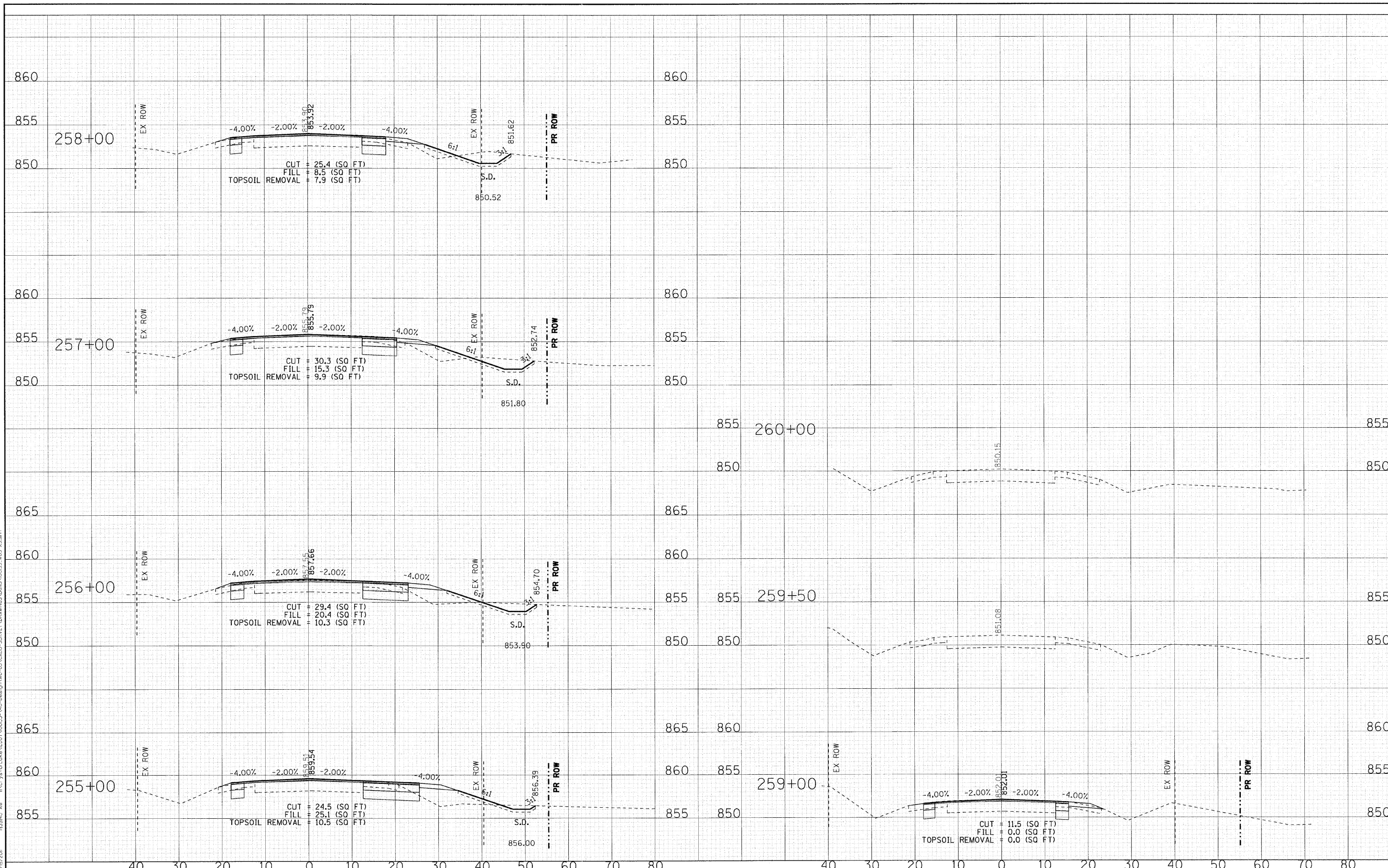


COPYRIGHT © 2000 BY BAYTER & WOODMAN, INC.  
 ALL RIGHTS RESERVED. NO PART OF THIS DOCUMENT MAY BE REPRODUCED OR TRANSMITTED IN ANY FORM OR BY ANY MEANS, ELECTRONIC OR MECHANICAL, INCLUDING PHOTOCOPYING, RECORDING, OR BY ANY INFORMATION STORAGE AND RETRIEVAL SYSTEM.  
 LICENSE NO. 084-00001 - EXPIRES 4/30/2011  
 7/16/2011 10:54:40 AM



DESIGNED - DJS	REVISED - 1-28-11 PER IDOT REVIEW
DRAWN - CJC	REVISED - 3-14-11 PER IDOT REVIEW
CHECKED - LDH	REVISED -
DATE - 09/10/10	REVISED -

**STATE OF ILLINOIS  
DEPARTMENT OF TRANSPORTATION**

**IL ROUTE 31 - AMES ROAD TO EDGEWOOD ROAD  
CROSS SECTIONS**

SCALE: H: 1"=10' V: 1"=5'  
STA. 255+00 TO STA. 260+00

F.A. RTE. 336	SECTION 2010-049-N	COUNTY	TOTAL SHEETS 50	SHEET NO. 50
FED. ROAD DIST. NO. 1 ILLINOIS FED. AID PROJECT			CONTRACT NO. 60L25	