

F.A.P. RTE.	SECTION	COUNTY	TOTAL SHEETS	SHEET NO.
533	119-7-1	McHENRY	40	1
		ILLINOIS	CONTRACT NO. 60M54	

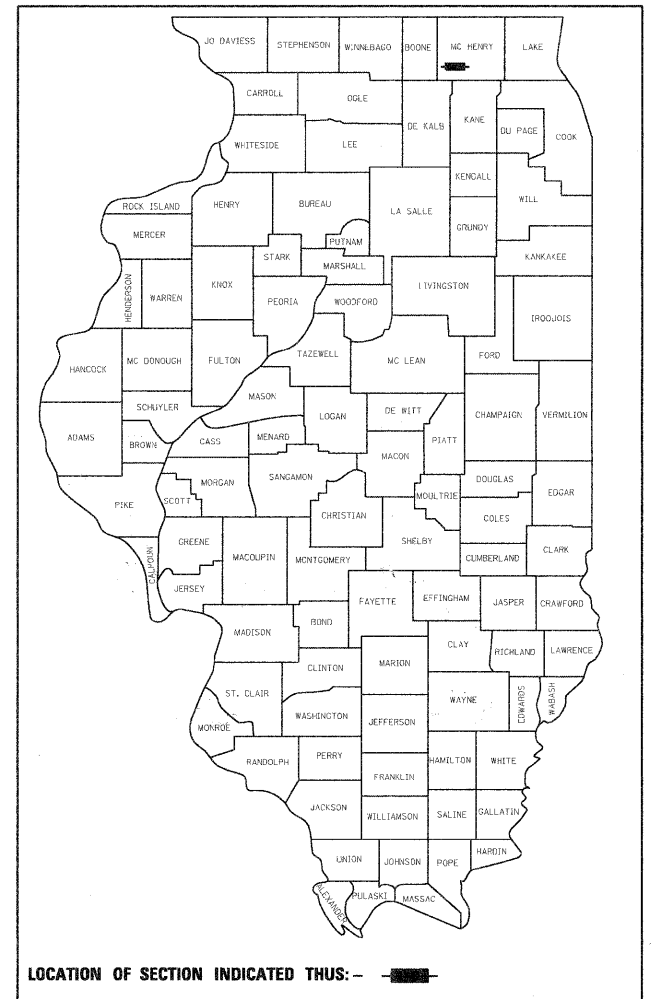
D-91-126-11

FOR INDEX OF SHEETS, SEE SHEET NO. 2

STATE OF ILLINOIS
DEPARTMENT OF TRANSPORTATION
DIVISION OF HIGHWAYS

**PROPOSED
HIGHWAY PLANS**

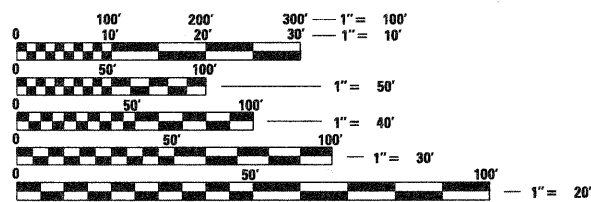
FAP ROUTE 533 (IL 176)
SECTION 119 - T - 1
IL - 176 OVER DRAINAGE DITCH (EAST OF IL 23)
PROJECT: ACBRF-0533(006)
McHENRY COUNTY
CULVERT REPLACEMENT



TRAFFIC DATA

IL 176 RD. (TELEGRAPH ST.)
EXISTING ADT : 7,300 (2009)
POSTED SPEED LIMIT 35 MPH

PROJECT IS LOCATED IN THE CITY OF MARENGO



FULL SIZE PLANS HAVE BEEN PREPARED USING STANDARD ENGINEERING SCALES. REDUCED SIZED PLANS WILL NOT CONFORM TO STANDARD SCALES. IN MAKING MEASUREMENTS ON REDUCED PLANS, THE ABOVE SCALES MAY BE USED.

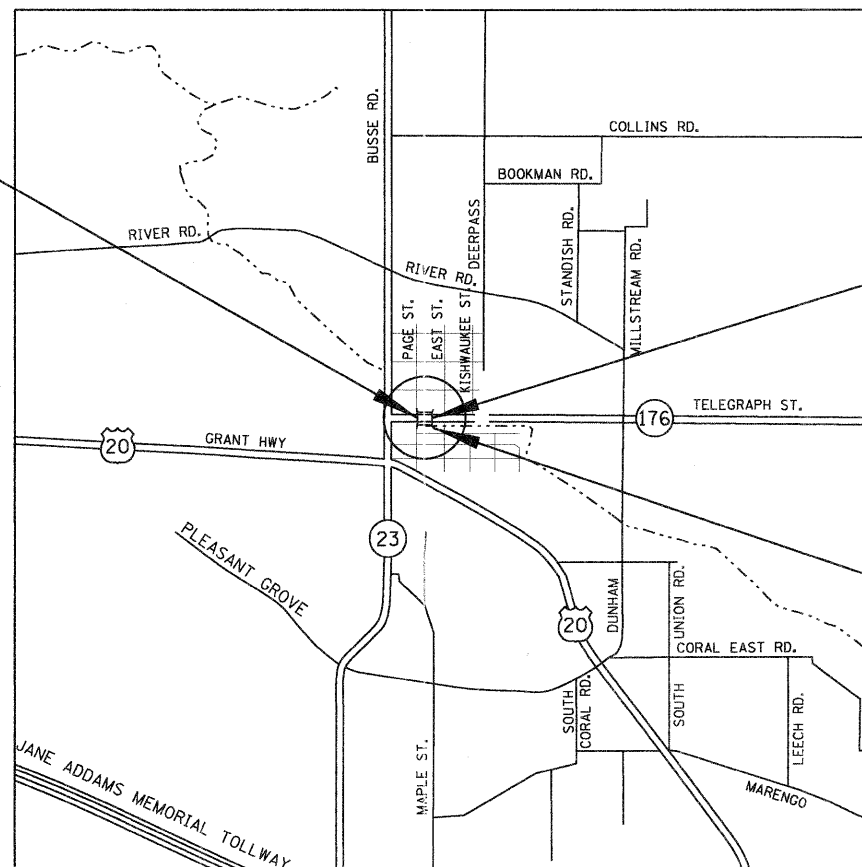
J.U.L.I.E.
JOINT UTILITY LOCATION INFORMATION FOR EXCAVATION
1-800-892-0123
OR 811

PROJECT ENGINEER ROBERT BORO
PROJECT MANAGER ISSAM RAYYAN

CONTRACT NO. 60M54



C-91-126-11



N.T.S.

GROSS LENGTH = 350.0 FT. = 0.07 MILE
NET LENGTH = 350.0 FT. = 0.07 MILE



PROJECT ENDS
STA. 91 + 75.00

EXISTING DUAL CELL CONCRETE BOX CULVERT TO BE REPLACED WITH CAST-IN-PLACE DUAL CELL CONCRETE BOX CULVERT, APPROACH SLABS AND CONNECTOR PAVEMENT.

EX. SN 056-0072
PR. SN 056-0301



THOMAS M. HEIN, P. E.
IL. LIC. NO. 062-053199
EXP 11-30-11
DATE 9-7-11

STATE OF ILLINOIS
DEPARTMENT OF TRANSPORTATION
DIVISION OF HIGHWAYS

SUBMITTED SEPTEMBER 9, 20 11

Diane M. O'Keefe
DEPUTY DIRECTOR OF HIGHWAYS, REGION ENGINEER
October 14 20 11

Scott E. Stett, P.E.
acting ENGINEER OF DESIGN AND ENVIRONMENT
October 14 20 11

Christine M. Reed
DIRECTOR OF HIGHWAYS, CHIEF ENGINEER

PRINTED BY THE AUTHORITY
OF THE STATE OF ILLINOIS