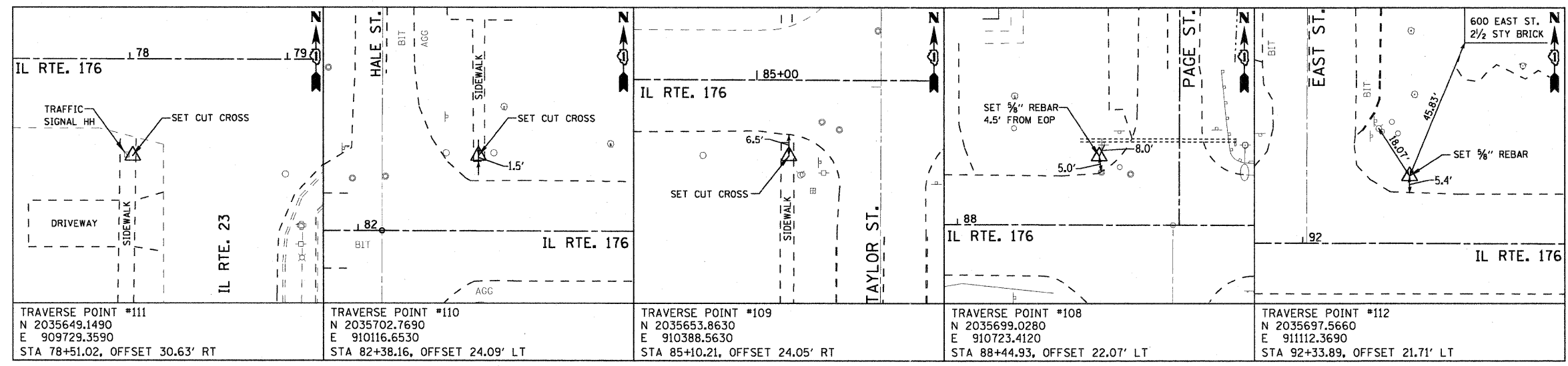


BENCHMARK

BM-100 SET CUT CROSS IN SIDEWALK SOUTH OF IL RTE 176 (TELEGRAPH ST.) AND WEST OF TAYLOR ST. APPROX. STA. 85+10.21, OFFSET 24.05' RT. ELEV. = 807.26

NOTE:
VERTICAL AND HORIZONTAL CONTROL
NAVD 1988 DATUM PER GPS VRS NETWORK



TRAVERSE CONTROL POINTS
NOT TO SCALE



USER NAME = 2PIEND	DESIGNED - DLP	REVISED -
PLOT SCALE = 50.00' / IN.	DRAWN - ENTRAN	REVISED -
PLOT DATE = 8/31/2011	CHECKED - TMH	REVISED -
	DATE - 04/07/11	REVISED -

STATE OF ILLINOIS
DEPARTMENT OF TRANSPORTATION

FAP ROUTE 533 (IL RTE 176) OVER DRAINAGE DITCH (EAST OF IL RTE 23)
ALIGNMENT, TIES & BENCHMARKS

F.A.P. RTE. 533	SECTION 119-T-1	COUNTY McHENRY	TOTAL SHEETS 40	SHEET NO. 9
IL ROUTE 176		CONTRACT NO. 60M54		
FED. ROAD DIST. NO.		ILLINOIS FED. AID PROJECT		

FILE NAME = G:\p\proj\11212155_002\CADD\Civil\Sh\1160M54-R6ent-ATB.dgn