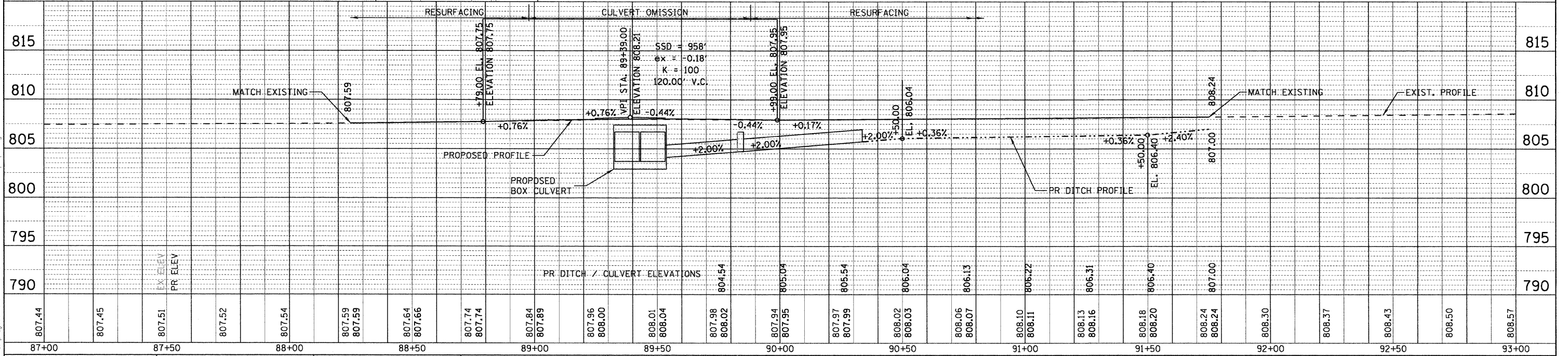
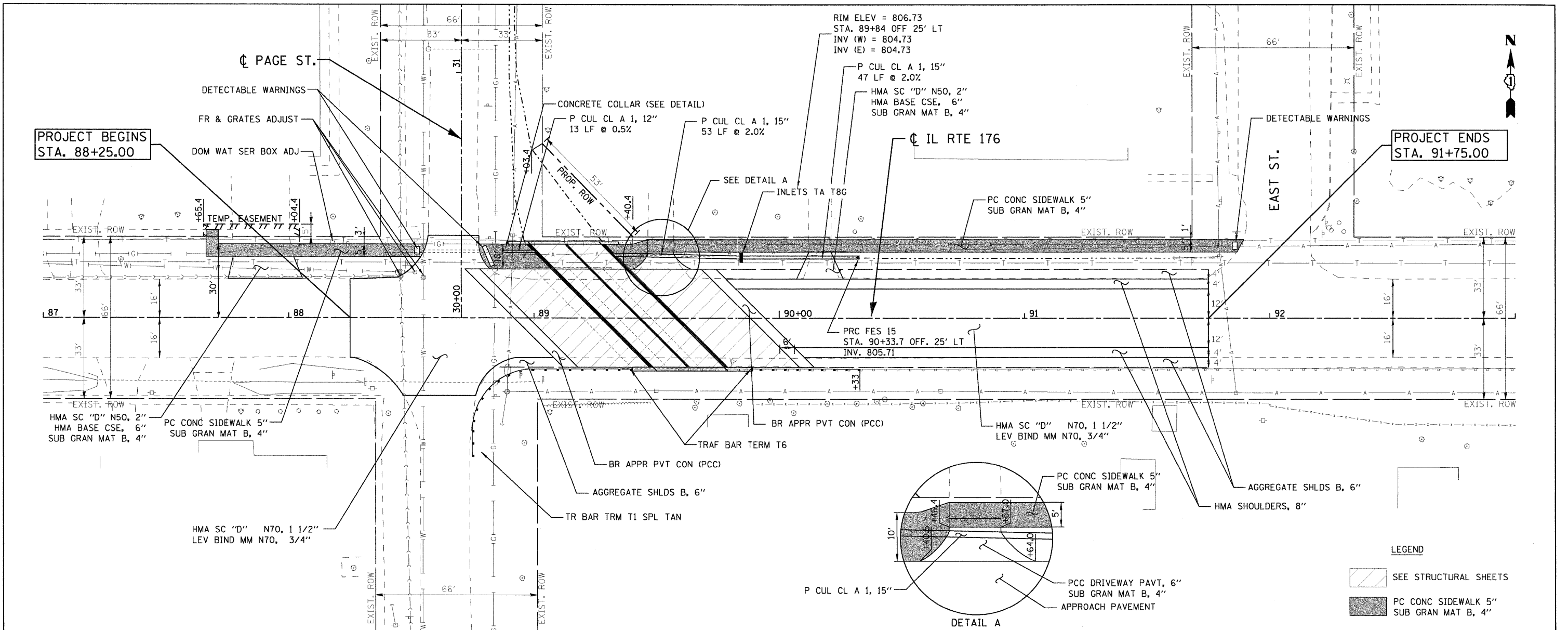


DATE	
BY	
REVIEWED	
PLANNED	
NOTED	
NO.	
FILE NAME	

DATE	
BY	
REVIEWED	
PLANNED	
NOTED	
NO.	
FILE NAME	



USER NAME = zpiend  
 DESIGNED - DLP  
 DRAWN - ENTRAN  
 CHECKED - TMH  
 DATE - 04/07/11

REVISED -  
 REVISED -  
 REVISED -  
 REVISED -

**STATE OF ILLINOIS  
 DEPARTMENT OF TRANSPORTATION**

**FAP ROUTE 533 (IL RTE 176) OVER DRAINAGE DITCH (EAST OF IL RTE 23)**  
**PROPOSED PLAN AND PROFILE**  
 SCALE: 1" = 20' SHEET NO. OF SHEETS STA. TO STA.

F.A.P. RTE. 533	SECTION 119-T-1	COUNTY McHENRY	TOTAL SHEETS 40	SHEET NO. 11
IL ROUTE 176		CONTRACT NO. 60M54		
FED. ROAD DIST. NO.		ILLINOIS FED. AID PROJECT		