

SECTION	COUNTY	TOTAL SHEETS	SHEET NO.
533	McHenry	40	34B
STA	FO STA		
119	119		

SHEET 2 OF 3

*(119-176-1)P-7

BRIDGE GENERAL NOTES

Plan dimensions and details relative to existing structure have been taken from existing plans and are subject to normal construction variations. It shall be the Contractor's responsibility to verify such dimensions and details in the field and make necessary approved adjustments prior to construction or ordering of materials. Such variations shall not be cause for additional compensation for a change in the scope of the work, however, the Contractor will be paid for the quantity actually furnished at the unit price bid for the work.

Reinforcement bars shall conform to the requirements of AASHTO M-31, M-42 or M-53 Grade 60.

Any reinforcement bars that are damaged during concrete removal shall be replaced with an approved bar splicer or anchorage system. Cost shall be included in the cost of "Concrete Removal".

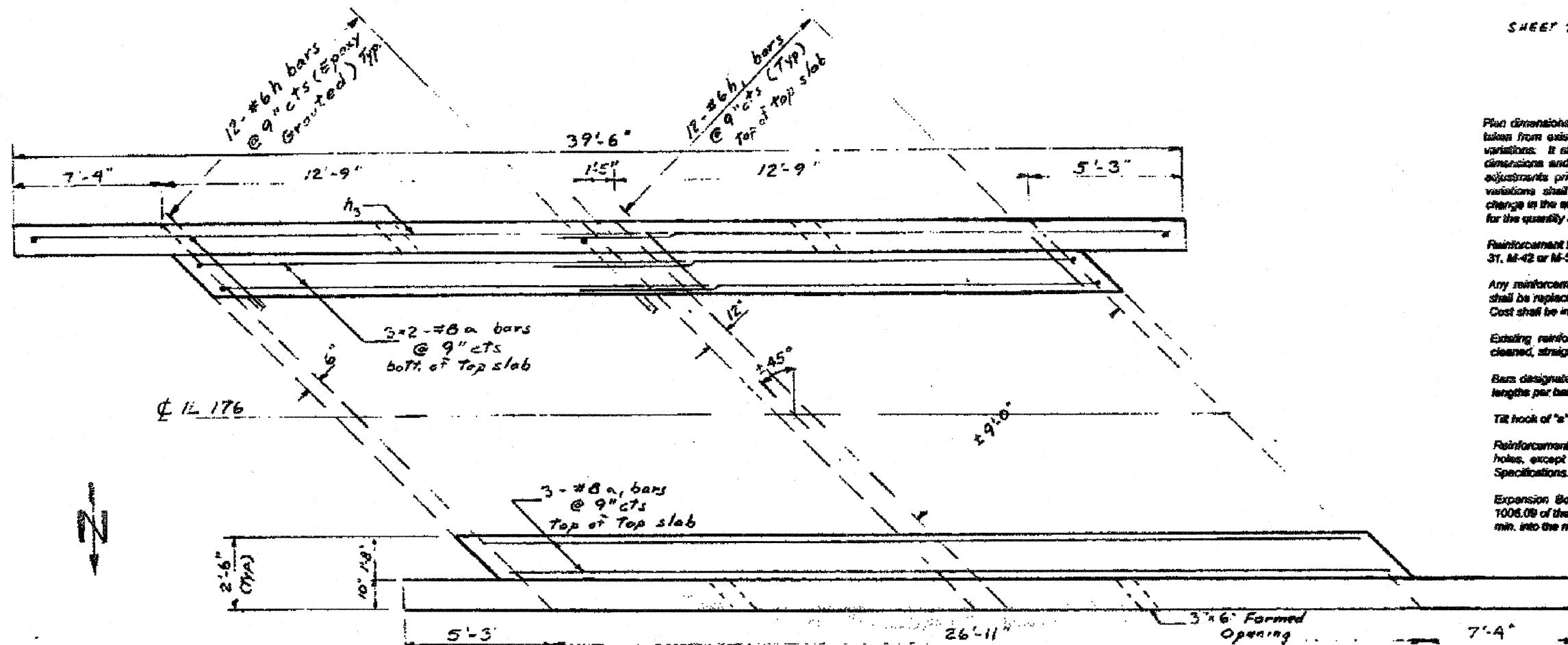
Existing reinforcement extending into the removed area shall be cleaned, straightened and incorporated into the new construction.

Bars designated thus 3 x 2 - #6 etc. indicates 3 lines of bars with 2 lengths per bar.

Tilt hook of "s" bars if necessary for 1-1/2" min. cl.

Reinforcement Bars to be epoxy grouted shall be installed in 9" min. holes, except as noted, according to Section 504 of the Standard Specifications. Cost included with Reinforcement Bars.

Expansion Bolts shall be 3/4" hooked bolts according to Section 1006.09 of the Standard Specifications. Hooked bolts shall extend 9" min. into the new concrete.



PLAN

Guardrail to be re-attached to structure (see Std. 630101) Typ.

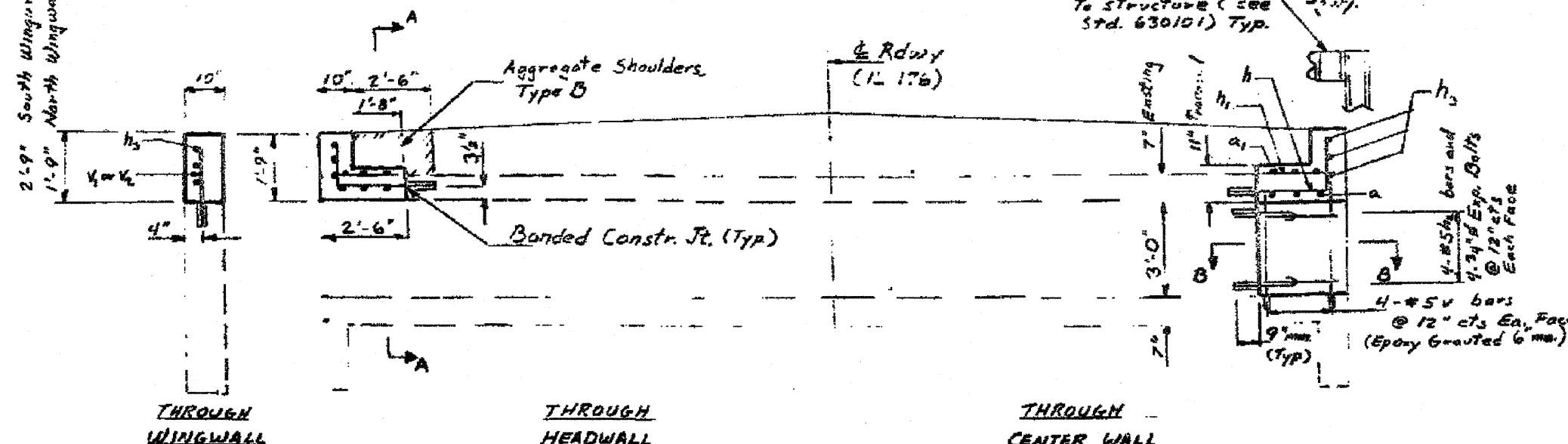
2'-9" South Wingwall
1'-9" North Wingwall

THROUGH WINGWALL

THROUGH HEADWALL

THROUGH CENTER WALL

SECTIONS (LOOKING WEST)



TOTAL BILL OF MATERIALS

PAY ITEM	UNIT	QUANTITY
Concrete Removal	Cu Yd	6.7
Structure Excavation	Cu Yd	8.3
Reinforcement Bars	Pound	2130
Removing and Re-erecting Existing Forming	Foot	80
Expansion Bolts, 3/4 inch	Each	18
Concrete Box Culverts	Cu Yd	7.8

REVISIONS	
NO.	DESCRIPTION
1	AS SHOWN

ILLINOIS DEPARTMENT OF TRANSPORTATION
CONCRETE STRUCTURES
GENERAL PLAN AND SECTION
IL 176 AT PINE ST
 SCALE: VERT. 1"=10'
 HORIZ. 1"=10'

FILE NAME = G:\projects\2102135_002\CADD\Structure\119-176\301-304\Existing Culvert Plan.dgn



USER NAME = zpiemid
 PLOT SCALE = N/A
 PLOT DATE = 9/7/2011

DESIGNED - BPS
 CHECKED - BHS
 DRAWN - BPS
 CHECKED - BHS

REVISED -
 REVISED -
 REVISED -
 REVISED -

STATE OF ILLINOIS
 DEPARTMENT OF TRANSPORTATION

EXISTING CULVERT PLANS
 S.N. 056-0301

SHEET NO. S9 OF 9 SHEETS

F.A.P. RTE.	SECTION	COUNTY	TOTAL SHEETS	SHEET NO.
533	119-T-1	McHENRY	40	24
IL ROUTE 176		CONTRACT NO. 60M54		
FED. ROAD DIST. NO.		ILLINOIS FED. AID PROJECT		