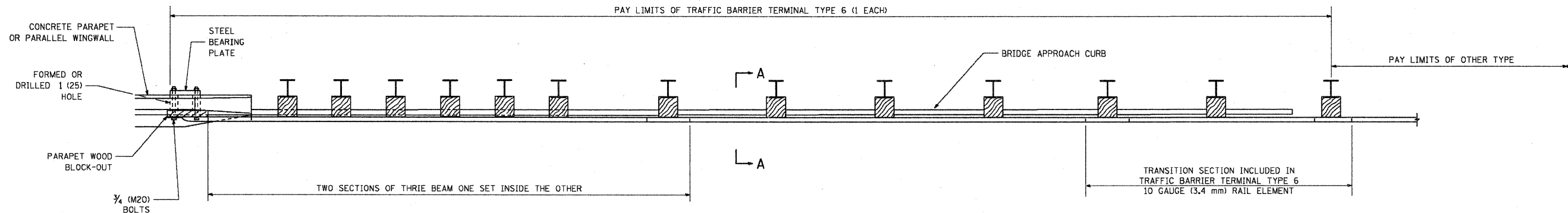
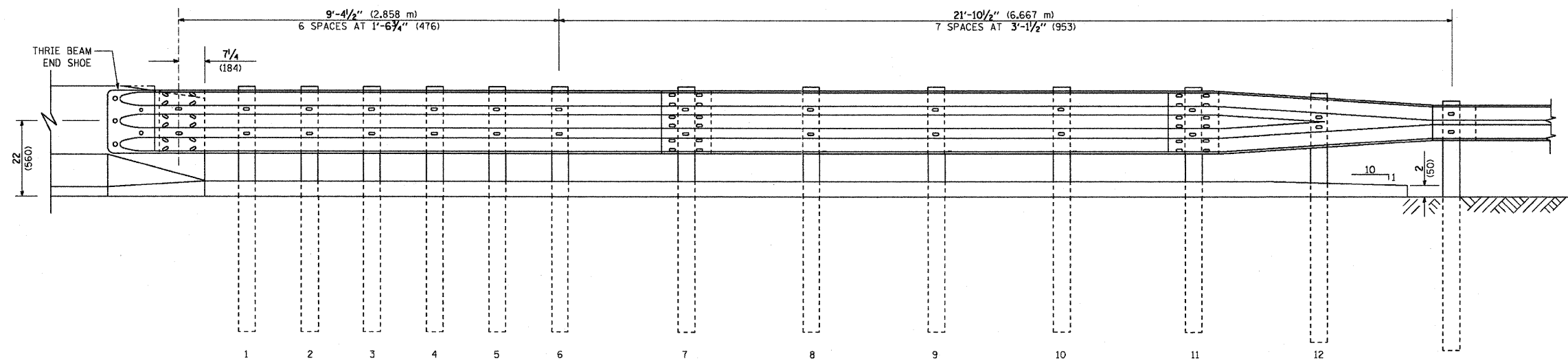


PARAPET OR WINGWALL

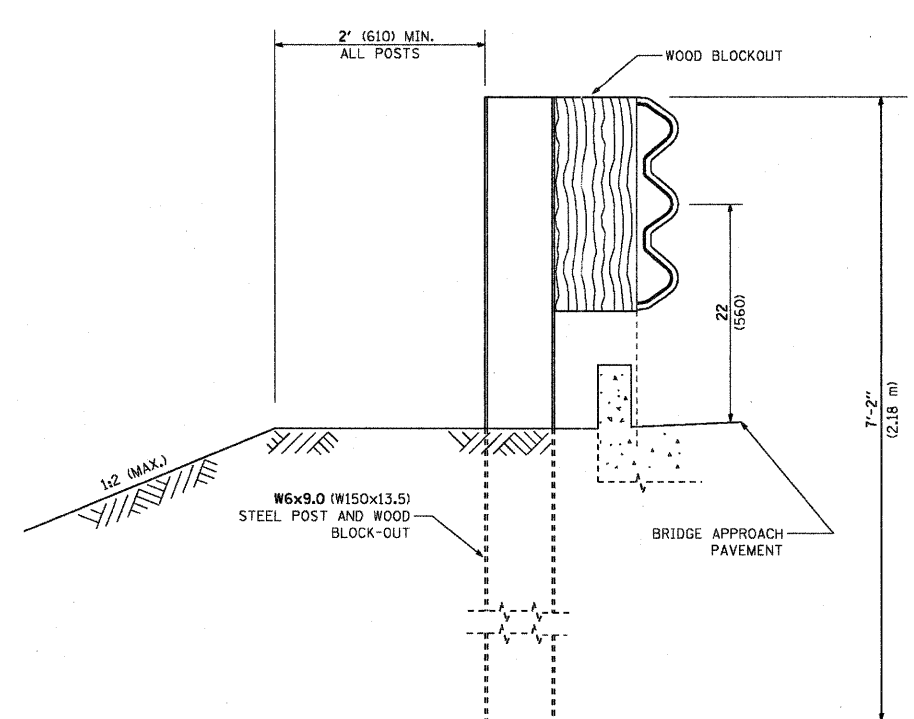
PAY LIMITS OF TRAFFIC BARRIER TERMINAL TYPE 6 (1 EACH)



PLAN



ELEVATION



SECTION A-A

GENERAL NOTES
 TO BE USED WHEN CONNECTING TO EXISTING GUARD RAILING PRIOR TO THE MIDWEST GUARDRAIL SYSTEM.
 SEE STANDARD 630001 FOR DETAILS OF GUARDRAIL NOT SHOWN.
 THRIE BEAM RAIL SHALL BE BOLTED TO BLOCK-OUT AT ALL POSTS.
 SEE STANDARD 420401 FOR DETAILS OF BRIDGE APPROACH PAVEMENT.
 ALL SLOPE RATIOS ARE EXPRESSED AS UNITS OF VERTICAL DISPLACEMENT TO UNITS OF HORIZONTAL DISPLACEMENT (V:H).
 ALL DIMENSIONS ARE IN INCHES (MILLIMETERS) UNLESS OTHERWISE SHOWN.

FILE NAME = c:\Projects\diststd2007\bn22.dgn	USER NAME = bauerdl	DESIGNED -	REVISED - STATE STANDARD:	STATE OF ILLINOIS DEPARTMENT OF TRANSPORTATION	TYPE 6 TERMINAL FOR USE WITH 21" HIGH SPBGR		F.A. RTE. =	SECTION	COUNTY	TOTAL SHEETS	SHEET NO.	
	PLOT SCALE = 50.0000' / IN.	DRAWN -	631031-05 - 02/19/2008		SCALE: NONE	SHEET NO. 1 OF 3 SHEETS	STA. TO STA.	533	119-T-1	MCHENRY	40	28
	PLOT DATE = 2/21/2008	CHECKED -	REVISED -		BM 22		CONTRACT NO. 60M54		FED. ROAD DIST. NO. 1 [ILLINOIS] FED. AID PROJECT			