

F.A.U. RTE.	SECTION	COUNTY	TOTAL SHEETS	SHEET NO.
2760	100-B-1	COOK	28	1

ILLINOIS CONTRACT NO. 60M80  
D-91-167-11 \* 28+1 = 29

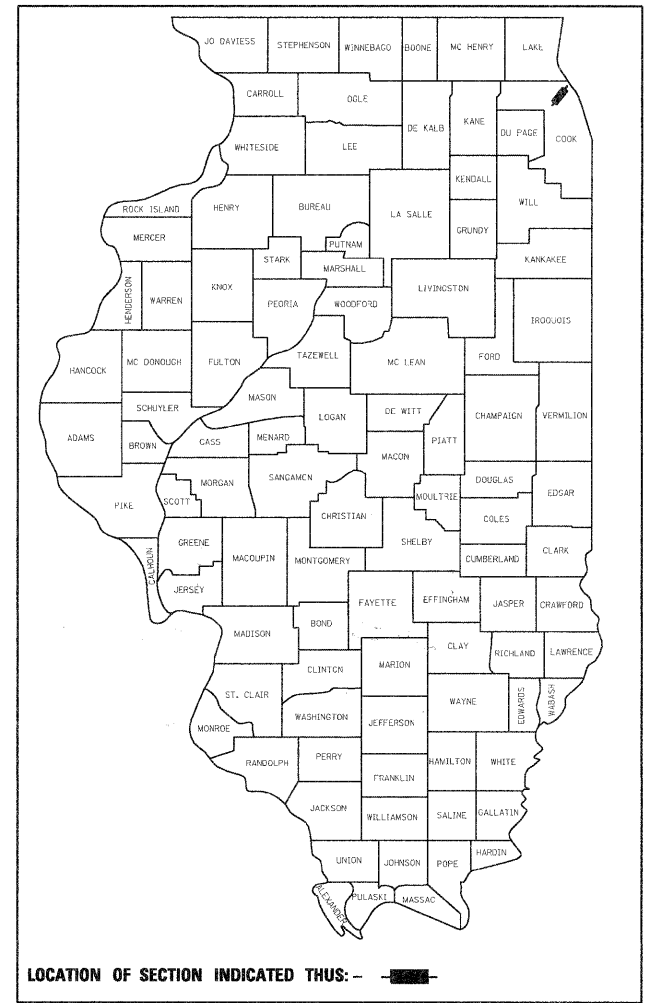
FOR INDEX OF SHEETS, SEE SHEET NO. 2  
\*\*\*\*\*

STATE OF ILLINOIS  
DEPARTMENT OF TRANSPORTATION  
DIVISION OF HIGHWAYS

**PROPOSED  
HIGHWAY PLANS**

**FAU ROUTE 2760 – SHERMER ROAD (SN 016-0814)  
OVER MIDDLE FORK NORTH BRANCH CHICAGO RIVER  
SECTION 100-B-1**

**BRIDGE BEAM AND DECK REPLACEMENT  
COOK COUNTY  
C-91-167-11**



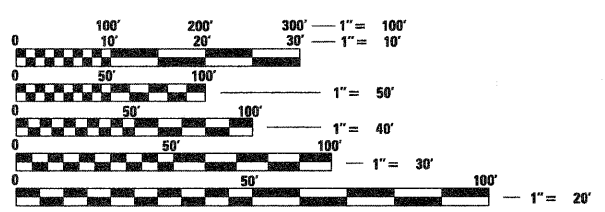
TRAFFIC DATA  
\*\*\*\*\*

SHERMER ROAD  
EXISTING ADT : 12,500 (2010)  
POSTED SPEED LIMIT: 30 MPH

IMPROVEMENT BEGINS  
STA. 205 + 33.10  
(SN 016-0814)

IMPROVEMENT ENDS  
STA. 206 + 61.11

IMPROVEMENT IS LOCATED IN THE VILLAGE OF NORTHBROOK

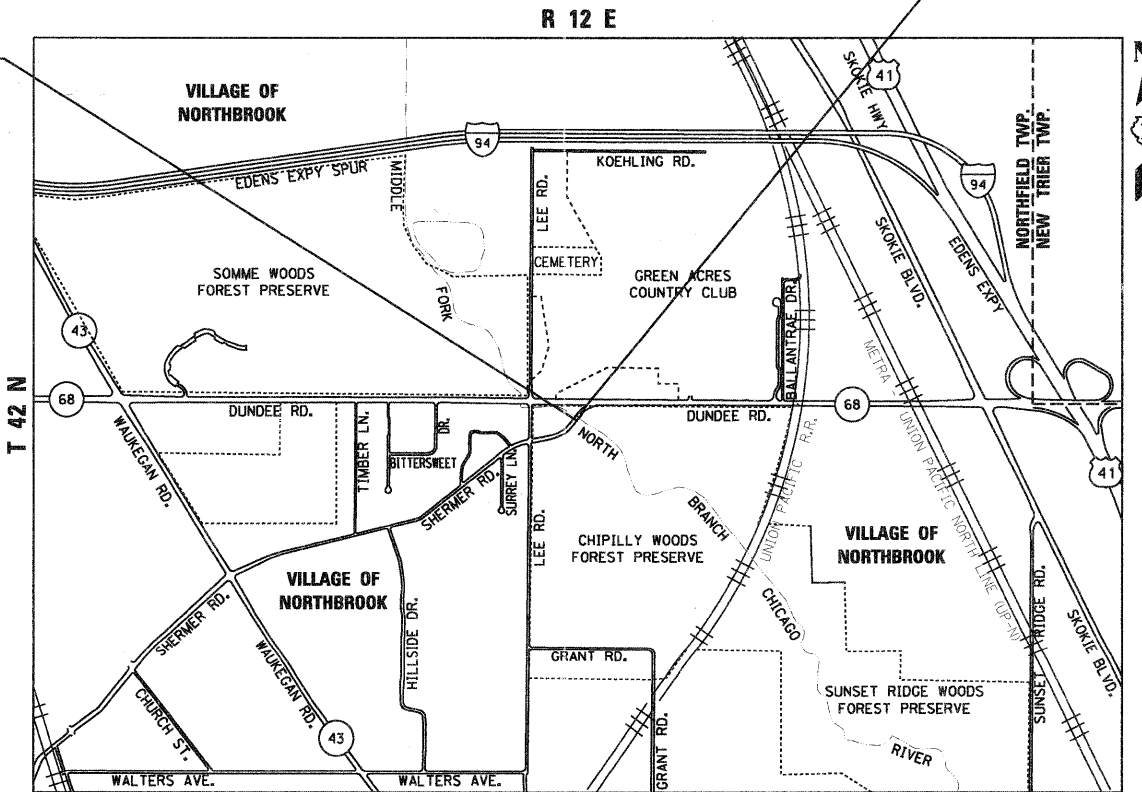


FULL SIZE PLANS HAVE BEEN PREPARED USING STANDARD ENGINEERING SCALES. REDUCED SIZED PLANS WILL NOT CONFORM TO STANDARD SCALES. IN MAKING MEASUREMENTS ON REDUCED PLANS, THE ABOVE SCALES MAY BE USED.

J.U.L.I.E.  
JOINT UTILITY LOCATION INFORMATION FOR EXCAVATION  
1-800-892-0123  
OR 811

PROJECT ENGINEER ROBERT BORO  
PROJECT MANAGER ISSAM RAYYAN

CONTRACT NO. 60M80



LOCATION MAP  
NOT TO SCALE

GROSS LENGTH = 128.01 FT. = 0.024 MILE  
NET LENGTH = 128.01 FT. = 0.024 MILE



THOMAS M. HEIN, P. E.  
IL. LIC. NO. 062-053199  
EXP 11-30-11  
DATE 9-7-11

STATE OF ILLINOIS  
DEPARTMENT OF TRANSPORTATION  
DIVISION OF HIGHWAYS  
SUBMITTED SEPTEMBER 8, 20 11  
Diana M. O'Keefe DEPUTY DIRECTOR OF HIGHWAYS, REGION ENGINEER  
October 14 20 11  
acting Scott E. Stitt PE, Ia ENGINEER OF DESIGN AND ENVIRONMENT  
October 14 20 11  
Christine M. Reed Ia DIRECTOR OF HIGHWAYS, CHIEF ENGINEER

**PRINTED BY THE AUTHORITY  
OF THE STATE OF ILLINOIS**