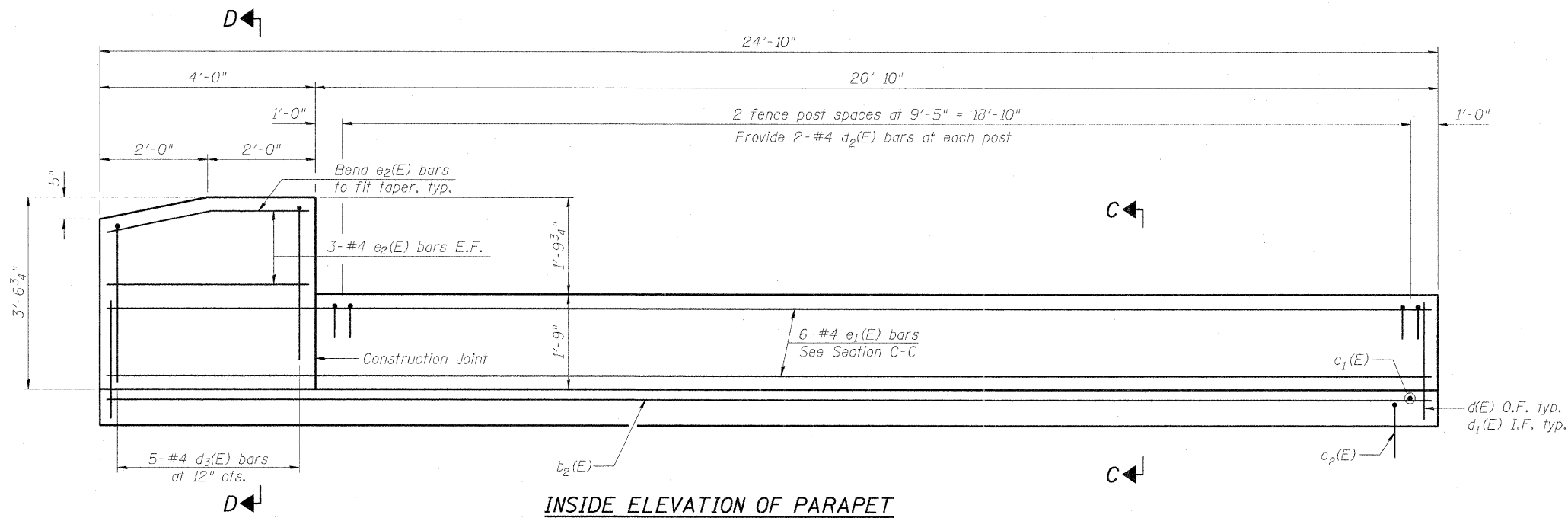
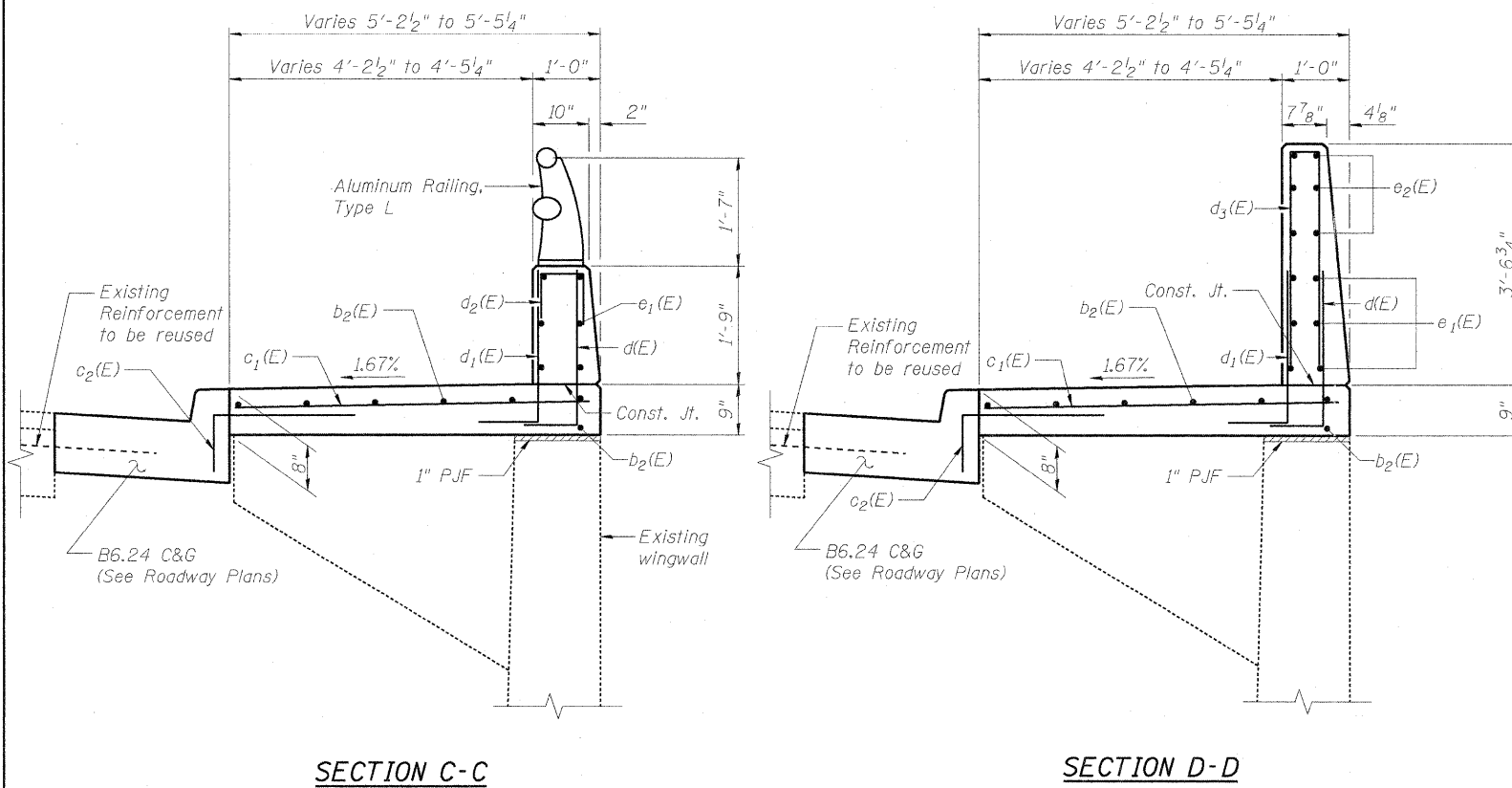


**APPROACH SIDEWALKS
BILL OF MATERIAL**

Bar	No.	Size	Length	Shape
b ₂ (E)	28	#5	24'-6"	—
c ₁ (E)	104	#5	5'-1"	—
c ₂ (E)	104	#5	3'-0"	┌
d(E)	108	#4	3'-1"	L
d ₁ (E)	108	#6	3'-5"	L
d ₂ (E)	24	#4	2'-0"	n
d ₃ (E)	20	#4	6'-0"	n
e ₁ (E)	24	#4	24'-6"	—
e ₂ (E)	24	#4	3'-8"	—
Concrete Superstructure			Cu. Yd.	21.6
Protective Coat			Sq. Yd.	82
Reinforcement Bars, Epoxy Coated			Pound	2,930

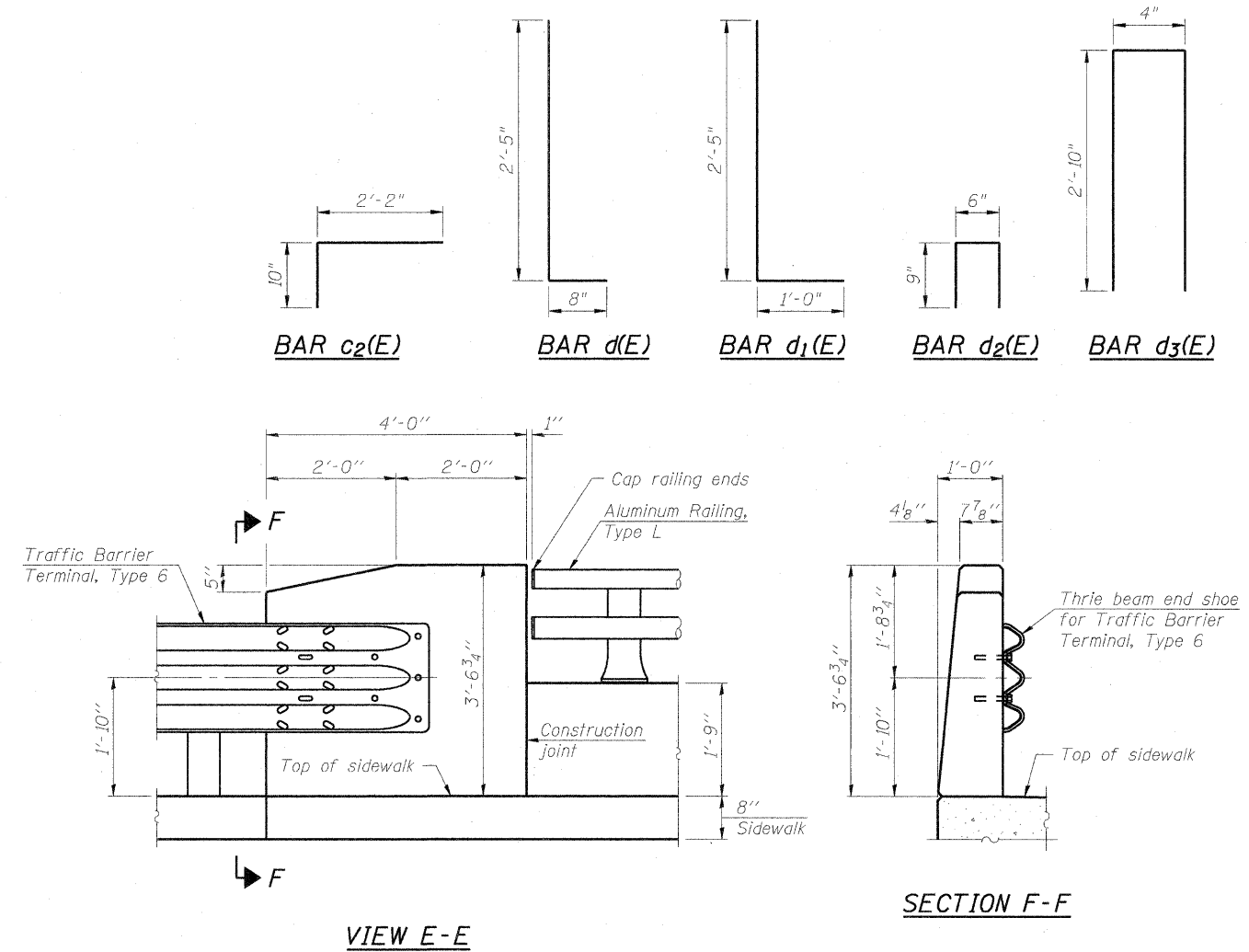


INSIDE ELEVATION OF PARAPET



SECTION C-C

SECTION D-D



VIEW E-E

SECTION F-F

FILE NAME: g:\projects\2102155_010\cadd\structure\0160814-60M80-006-Approach 2.dgn

	USER NAME = Zsagerb	DESIGNED - BPS	REVISED -	STATE OF ILLINOIS DEPARTMENT OF TRANSPORTATION	APPROACH DETAILS (2 OF 2) S.N. 016-0814	F.A.U. RTE. 2760	SECTION 100-B-1	COUNTY COOK	TOTAL SHEETS 28	SHEET NO. 16	
	PLOT SCALE = N/A	DRAWN - BPS	REVISED -			CONTRACT NO. 60M80					
	PLOT DATE = 9/31/2011	CHECKED - GSP	REVISED -			ILLINOIS FED. AID PROJECT					
	SHEET NO. S6 OF 14 SHEETS										