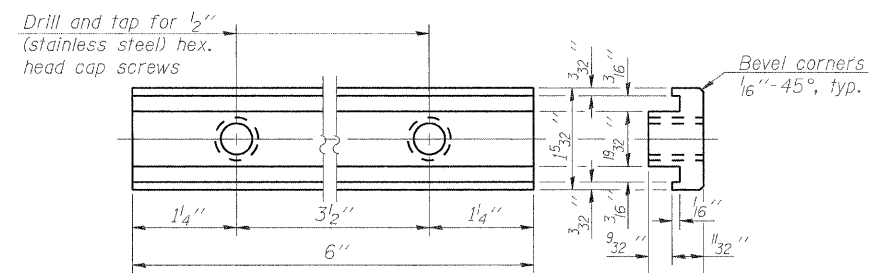


VIEW B-B

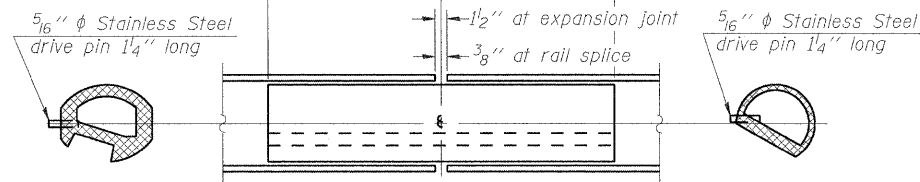
RAIL POST DETAILS

SECTION A-A



RAIL POST CLAMP BAR

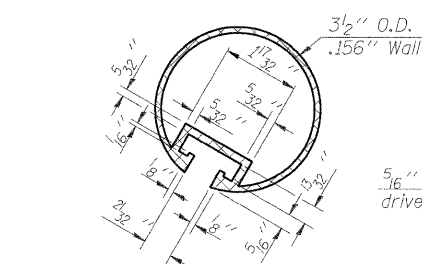
For Top Rail



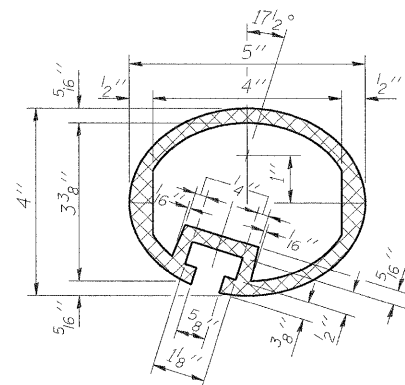
BOTTOM RAIL

RAIL SPLICE

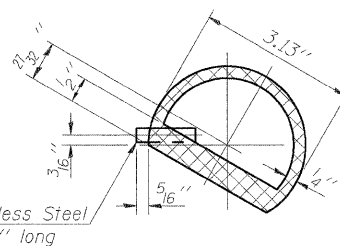
TOP RAIL



SECTION THRU TOP RAIL

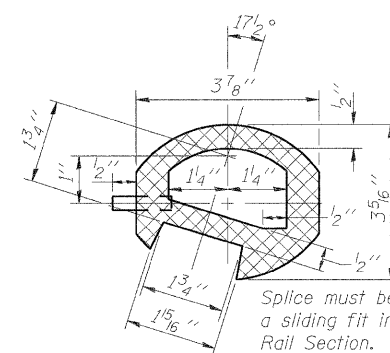


SEC. THRU ELLIPTICAL RAIL SECTION



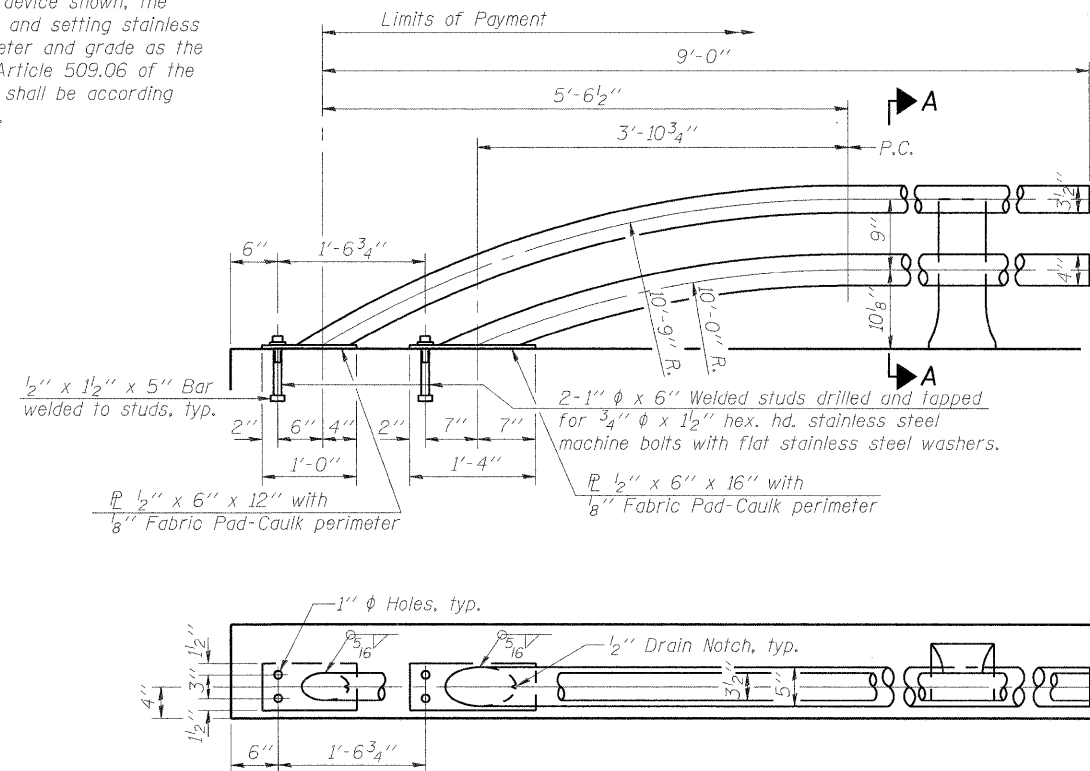
SECTION THRU SPLICE

For Top Rail

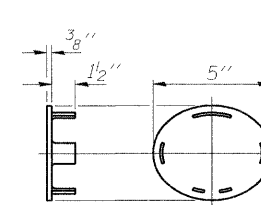


SEC. THRU SPLICE

\* In lieu of the cast-in-place anchor device shown, the Contractor has the option of drilling and setting stainless steel anchor rods of the same diameter and grade as the specified cap screws according to Article 509.06 of the Standard Specifications. Embedment shall be according to the manufacturer's specifications.

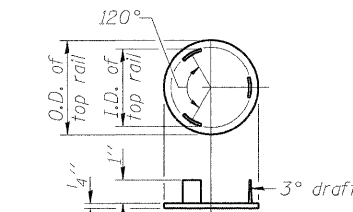


RAIL TERMINAL SECTION



CAST END CAP

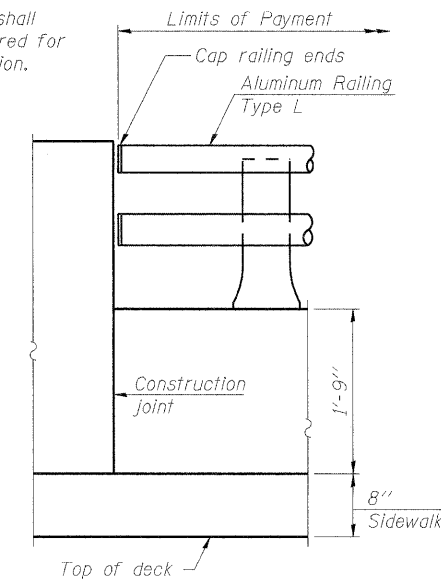
For bottom rail  
DRIVE FIT TYPE



CAST END CAP

For top rail

Note:  
The end rail post shall be set back as required for the terminal rail section.



RAIL END TREATMENT FOR TYPE 5 AND 6 TERMINAL

BILL OF MATERIAL

Item	Unit	Quantity
Aluminum Railing, Type L	Foot	180

Notes:  
All Posts shall be normal to parapet.  
All joints in rail shall be spliced per detail.  
All exposed rail ends shall be capped per detail.  
Provide 1-1/8 inch and 2-1/16 inch Aluminum Shims for 25% of the Posts. Rail elements shall be parallel to Grade-high spots will be ground and low spots shimmed.  
See sheet of for rail post spacing.

R-20

7-1-10 (7'-0" to 10'-0" Post spacing)



USER NAME = ZPIENID  
PLOT SCALE = N/A  
PLOT DATE = 8/31/2011

DESIGNED - BPS  
CHECKED - BHS  
DRAWN - BPS  
CHECKED - GSP

REVISED -  
REVISED -  
REVISED -  
REVISED -

STATE OF ILLINOIS  
DEPARTMENT OF TRANSPORTATION

ALUMINUM RAILING, TYPE L  
S.N. 016-0814

SHEET NO. 58 OF 14 SHEETS

F.A.U. RTE.	SECTION	COUNTY	TOTAL SHEETS	SHEET NO.
2760	100-B-1	COOK	28	18

CONTRACT NO. 60M80  
ILLINOIS FED. AID PROJECT