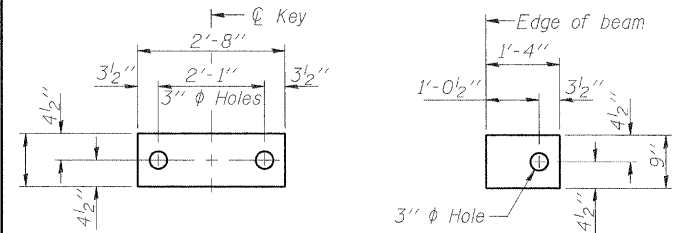
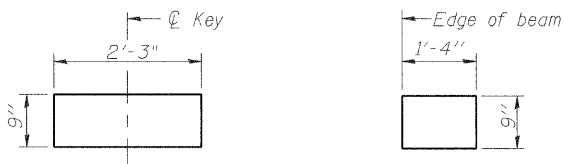


FABRIC BEARING PAD FABRIC BEARING PAD
(Interior) (Interior)
(4-required) (6-required)



FABRIC BEARING PAD FABRIC BEARING PAD
(Interior) (Exterior)
(2-required) (2-required)

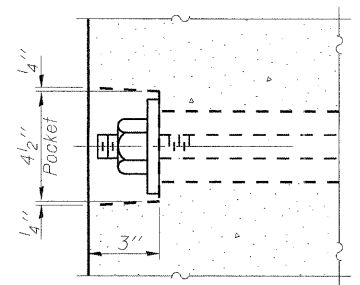
FIXED



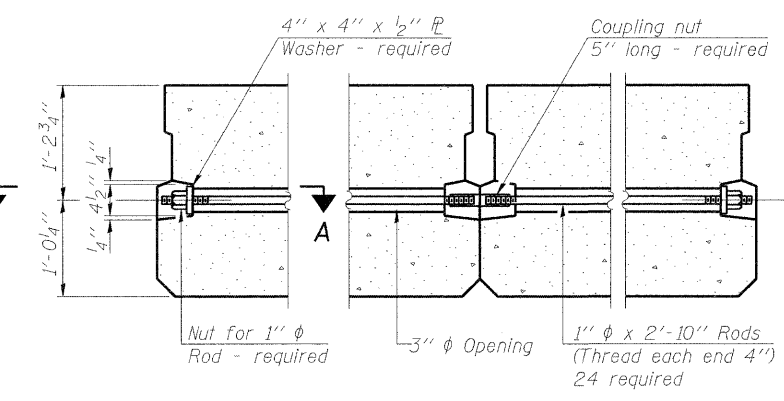
FABRIC BEARING PAD FABRIC BEARING PAD
(Interior) (Exterior)
(12-required) (2-required)

EXPANSION

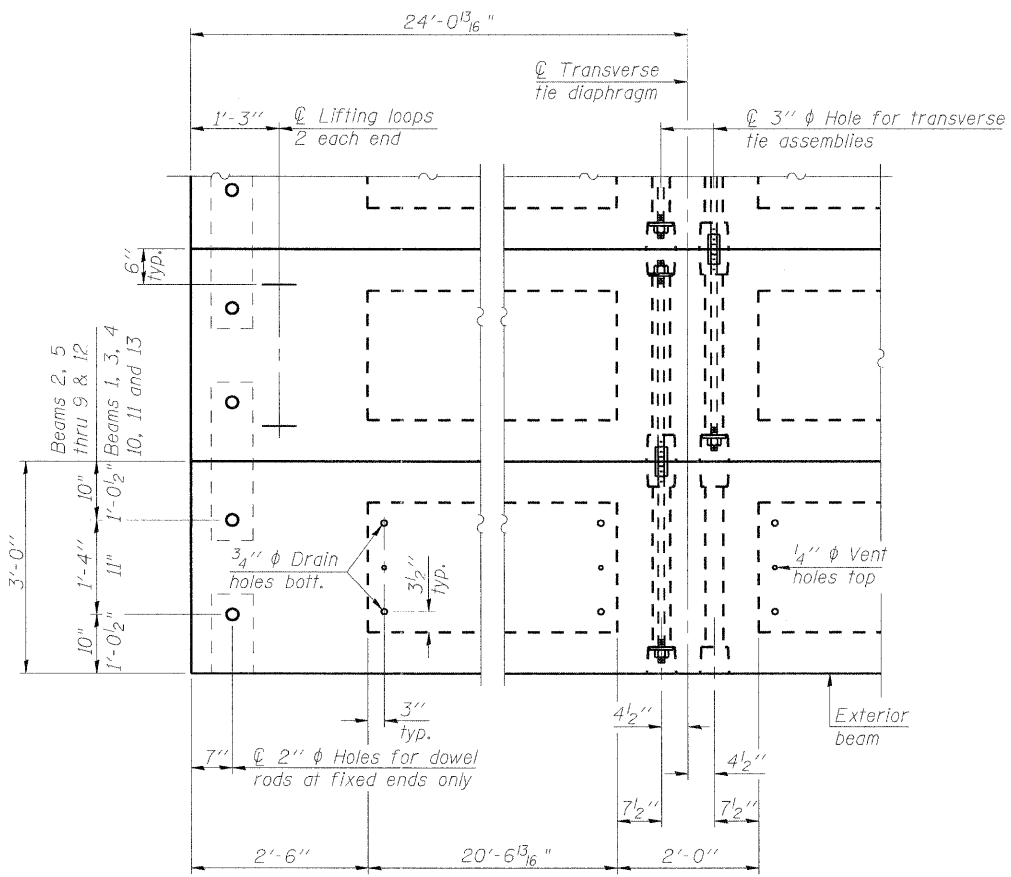
Notes:
All bearing pads shall be 1" thick.
Expansion bearing pad shall be bonded to the substructure.



SECTION A-A



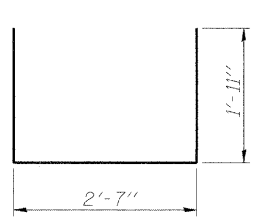
TYPICAL TRANSVERSE TIE ASSEMBLY



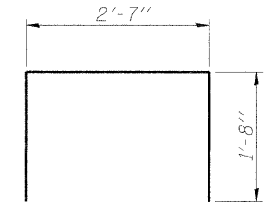
PLAN VIEW

NOTES

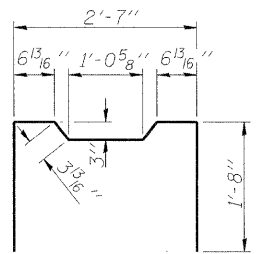
Prestressing steel shall be uncoated high strength, low relaxation 7-wire strand, Grade 270. The nominal diameter shall be 1/2" and the nominal cross-sectional area shall be 0.153 sq. in.
The 1" rods in the transverse tie assembly shall be tightened to a snug fit and the threads set. Pockets on exterior faces of bridge shall be filled with grout after transverse tie assembly is in place.
Reinforcement bars shall conform to ASTM A 706, Grade 60. (See Special Provisions).
Two 1/8" fabric adjusting shims of the dimensions of the exterior bearing pad shall be provided for each bearing pad location.
A minimum 2 1/2" diameter lifting pin shall be used to engage the lifting loops during handling.
Corrosion Inhibitor, per Article 1020.05(b)(12) and 1021.06 of the Standard Specifications, shall be used in the concrete for precast prestressed concrete deck beams.
Compressive strength of prestressed concrete, f'c, shall be 6000 psi.
Compressive strength of prestressed concrete at release, f'ci, shall be 5000 psi.



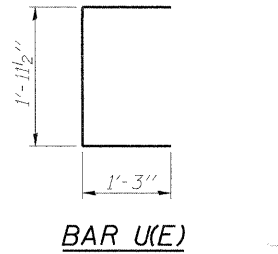
BAR S(E)



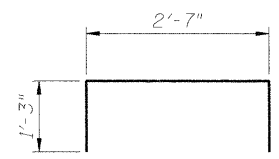
BAR S1(E)



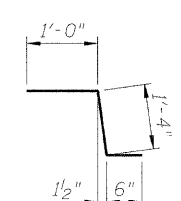
BAR S2(E)



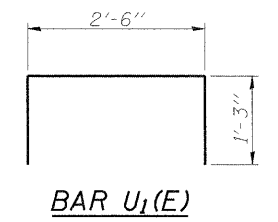
BAR U(E)



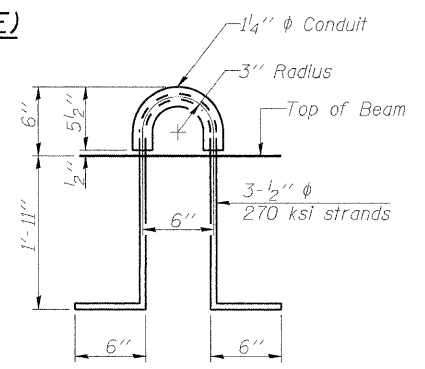
BAR D(E)



BAR D1(E)



BAR U1(E)



LIFTING LOOP DETAIL

BILL OF MATERIAL

Precast Prestressed Conc. Deck Bms. (27" depth)	Sq. Ft.	1,877
---	---------	-------

FILE NAME = g:\projects\2102195_01\cadd\structure\0162014-60M08-011-Beam2.dgn



USER NAME = 2PIENID	DESIGNED - BPS	REVISED -
PLOT SCALE = N/A	CHECKED - BHS	REVISED -
PLOT DATE = 8/31/2011	DRAWN - BPS	REVISED -
	CHECKED - GSP	REVISED -

**STATE OF ILLINOIS
DEPARTMENT OF TRANSPORTATION**

**27"x 36" PPC DECK BEAM DETAILS
S.N. 016-0814**

SHEET NO. S11 OF 14 SHEETS

F.A.J. RTE. 2760	SECTION 100-B-1	COUNTY COOK	TOTAL SHEETS 28	SHEET NO. 21
			CONTRACT NO. 60M80	
ILLINOIS FED. AID PROJECT				