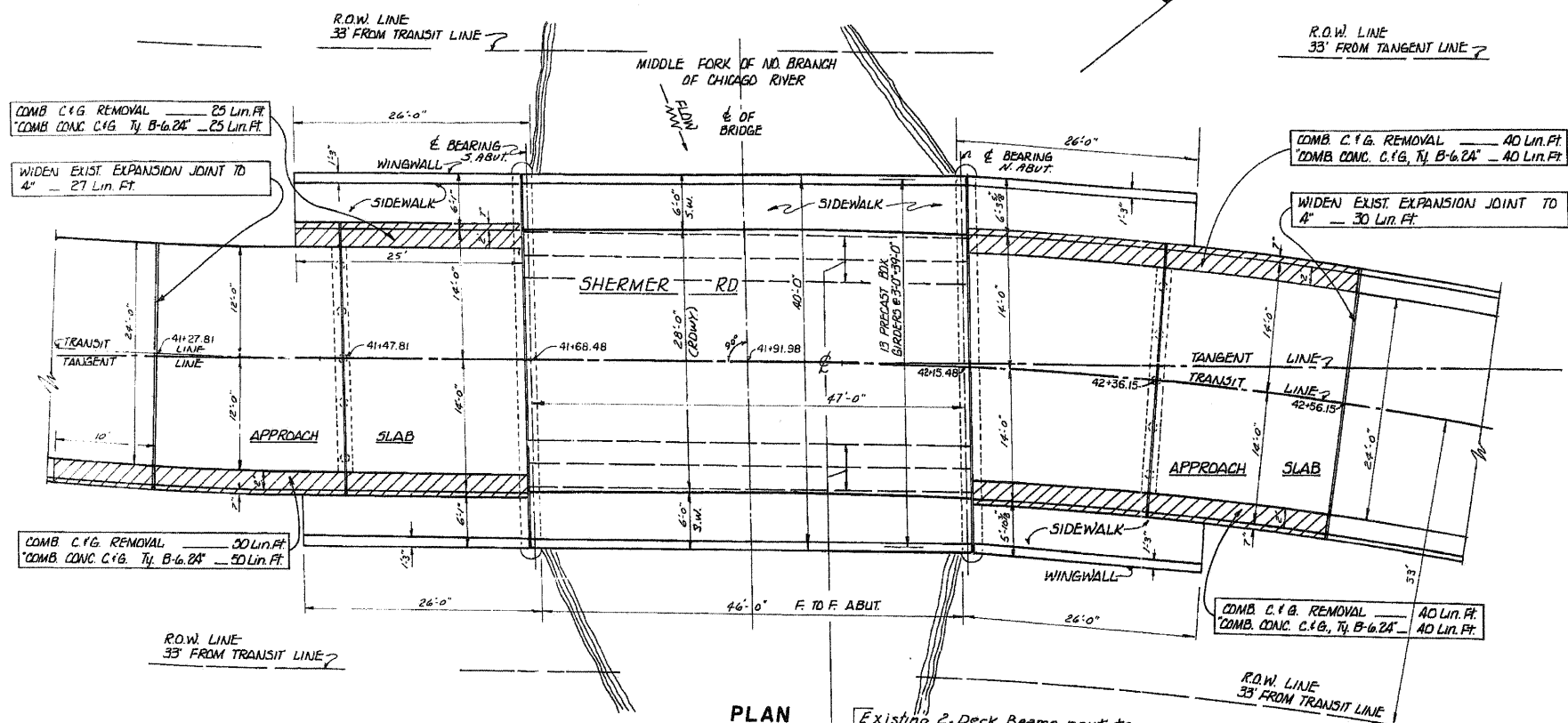
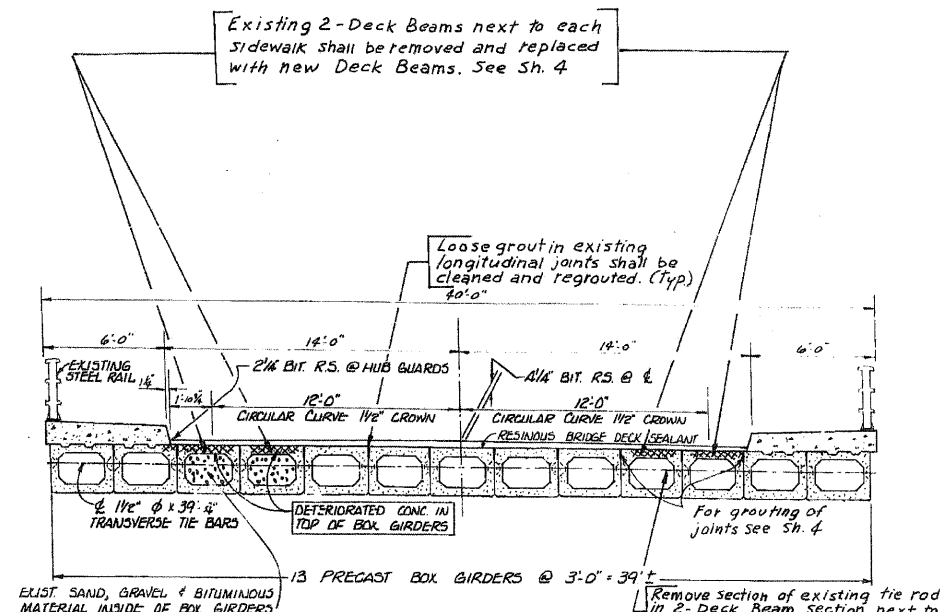


NOTE: REMOVE EXISTING BITUMINOUS RESURFACING FROM DECK AND APPROACH SLABS (AVE THICKNESS OF BIT. 3" ON DECK AND 2" ON APPROACH SLABS)  
 " BITUMINOUS CONCRETE SURFACE REMOVAL" — 364 Sq. Yd.

CONSTRUCT CONCRETE WEARING SURFACE ON BRIDGE DECK AND RE-SURFACE APPROACH SLABS. (SEE SH. 3 FOR DETAILS)

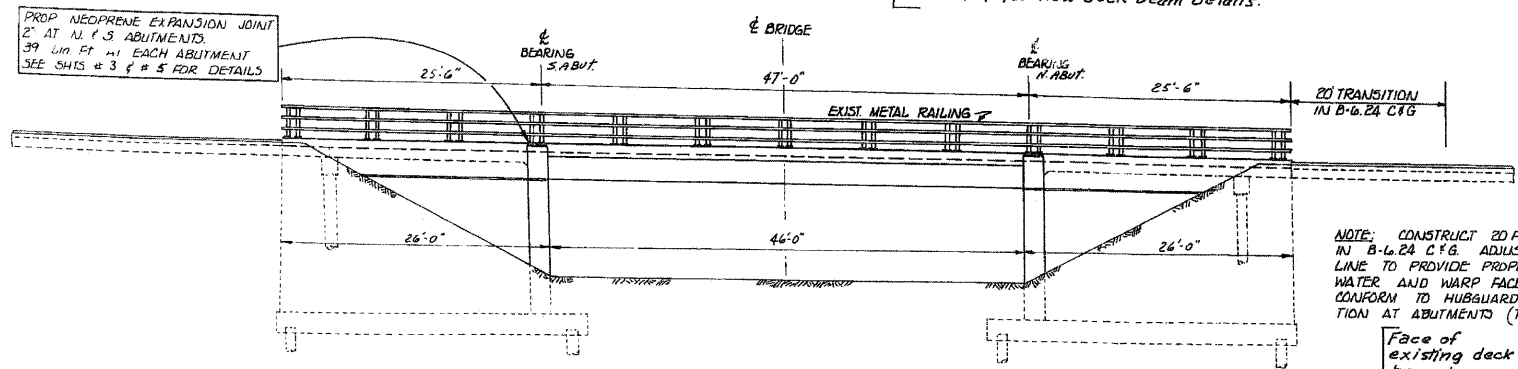


PLAN

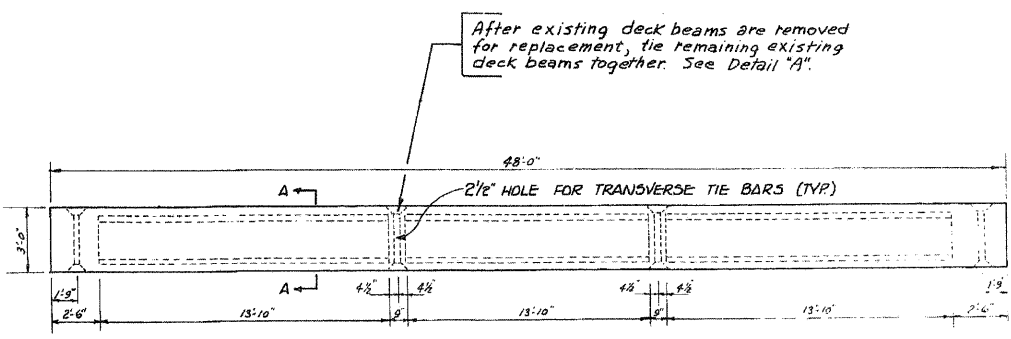


EXIST. DECK SECTION  
 STATION 41+91.98

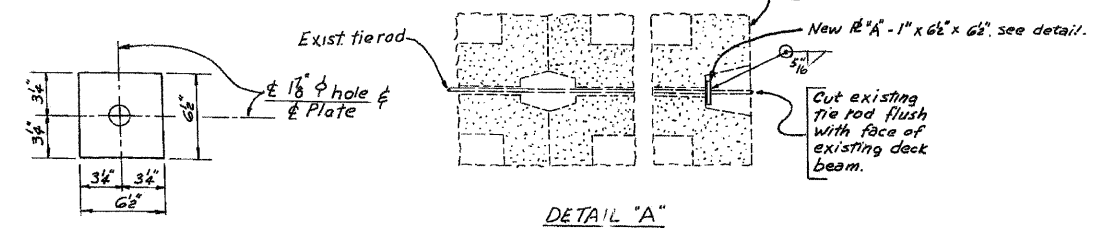
(For rehabilitation of roadway surface)  
 See Note above Plan View.



ELEVATION



PLAN: BOX GIRDER  
 (Existing)



DETAIL "A"

PLATE "A" - 1" x 6 1/2" x 6 1/2"

GENERAL PLAN & ELEVATION  
 SHERMER RD. OVER MIDDLE FORK NO. BRANCH CHICAGO RIVER  
 S.A. 106 SEC. 106-0203-DL

FILE NAME: g:\project\2102195\_010\add\structure\010914-60M60-013-Existing Ldgn



USER NAME - ZPIENID	DESIGNED - BPS	REVISOR -
PLOT SCALE = N/A	CHECKED - BHS	REVISOR -
PLOT DATE = 8/31/2011	DRAWN - BPS	REVISOR -
	CHECKED - GSP	REVISOR -

STATE OF ILLINOIS  
 DEPARTMENT OF TRANSPORTATION

EXISTING BRIDGE PLANS (1 OF 2)  
 S.N. 016-0814

SHEET NO. S13 OF 14 SHEETS

REVISED 4-19-78				
F.A.U. RTE. 2760	SECTION 100-B-1	COUNTY COOK	TOTAL SHEETS 28	SHEET NO. 23
			CONTRACT NO. 60M60	
ILLINOIS FED. AID PROJECT				