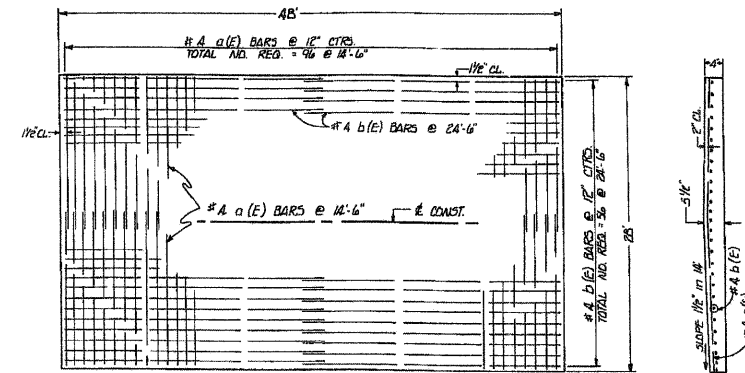
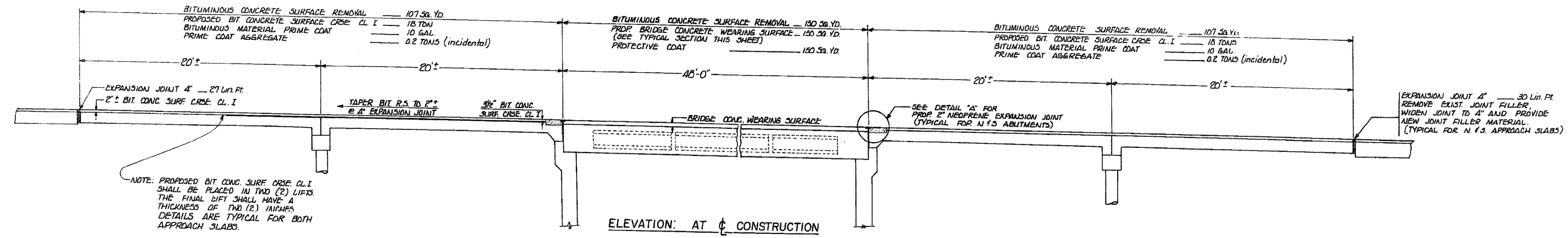


ROUTE	SECTION	COUNTY	TOTAL SHTS.	SHEET NO.
S.A. 106 SHERMER RD.	106-0203-DL	COOK	6	3

BILL OF MATERIAL FOR BRIDGE CONCRETE WEARING SURFACE			
BAR	SIZE	NO. REQ.	LENGTH
a(E)	#4	96	14'-6"
b(E)	#4	56	24'-6"
REINF. BARS - 1850 #			
BRIDGE CONC. WEAR. SURF. - 150 Sq. Yd.			

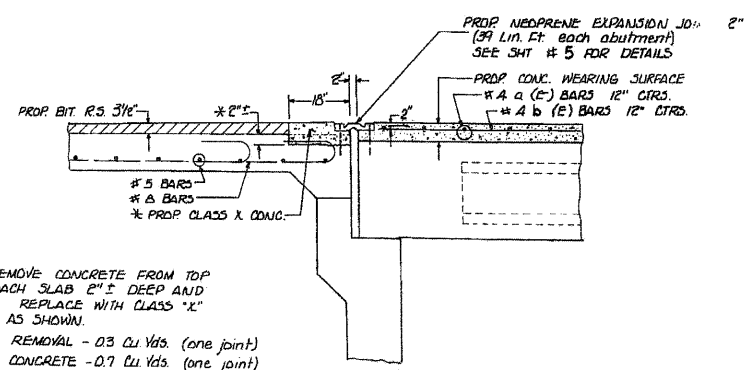


BRIDGE CONCRETE WEARING SURFACE REINFORCEMENT

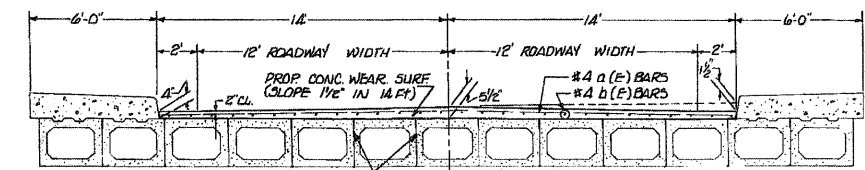


NOTE: PROPOSED BIT CONC. SURF. CRSE. CL. I SHALL BE PLACED IN TWO (2) LIFTS. THE FINAL BITF SHALL HAVE A THICKNESS OF TWO (2) INCHES. DETAILS ARE TYPICAL FOR BOTH APPROACH SLABS.

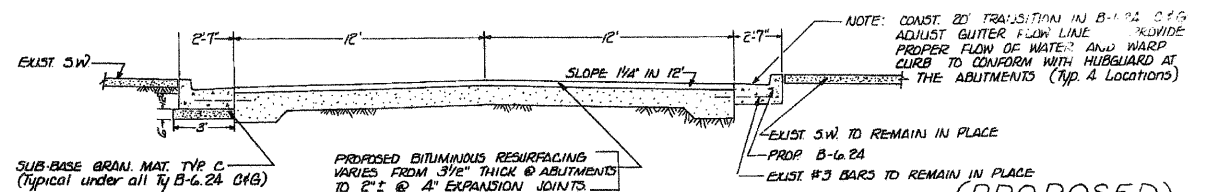
ELEVATION: AT CONSTRUCTION



DETAIL "A"
NEOPRENE EXPANSION JOINT 2"



TYPICAL SECTION: BRIDGE DECK & BRIDGE CONCRETE WEARING SURFACE (Proposed)



TYPICAL SECTION: APPROACH RESURFACING & PROP. B-6.24 COMB. CONC. CURB & GUTTER

PROFILE, TYPICAL SECTIONS & NEOPRENE EXPANSION JOINTS

SHERMER RD. OVER MIDDLE FORK NO. BRANCH CHICAGO RIVER
S.A. 106 SEC. 106-0203-DL
REVISED 4-19-78

FILE NAME = g:\pvc\sect\2102195_010\cond\structure\1060203-DL\106-0203-DL-014-Existing 2.dgn



USER NAME = ZPIEND	DESIGNED - BPS	REVISOR -
PLOT SCALE = N/A	CHECKED - BHS	REVISOR -
PLOT DATE = 8/31/2011	DRAWN - BPS	REVISOR -
	CHECKED - GSP	REVISOR -

STATE OF ILLINOIS
DEPARTMENT OF TRANSPORTATION

EXISTING BRIDGE PLANS (2 OF 2)
S.N. 016-0814

SHEET NO. 514 OF 14 SHEETS

F.A.U. RTE.	SECTION	COUNTY	TOTAL SHEETS	SHEET NO.
2760	100-B-1	COOK	28	24
				CONTRACT NO. 60M80
ILLINOIS FED. AID PROJECT				