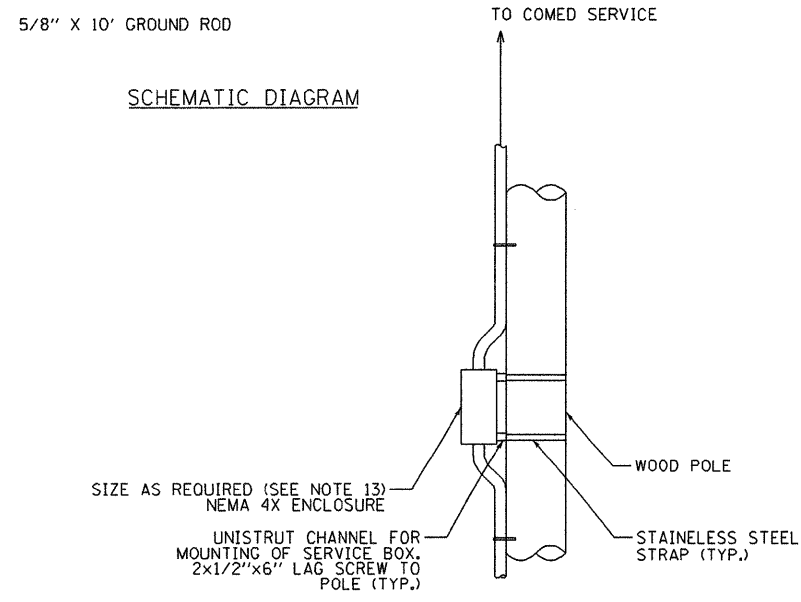


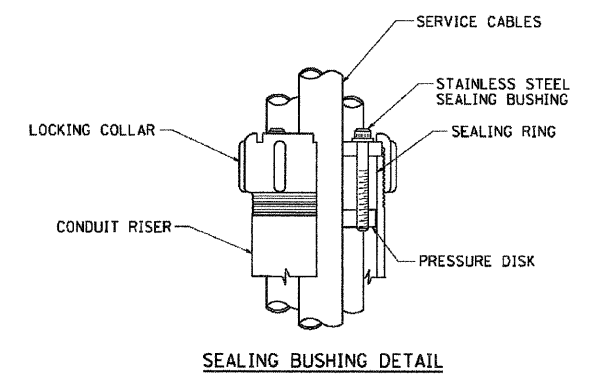
- COMPONENTS**
- ① SURGE PROTECTOR
 - ② MAIN BREAKER 1P, 30A, THERMAL MAGNETIC RELAY SWITCH, IP, 30A
 - ③ BRANCH BREAKER 1P, 15A, THERMAL MAGNETIC
 - ④ GROUND/NEUTRAL BUS BYPASS SWITCH, SPDT
 - ⑤ PHOTOCEL, 120V



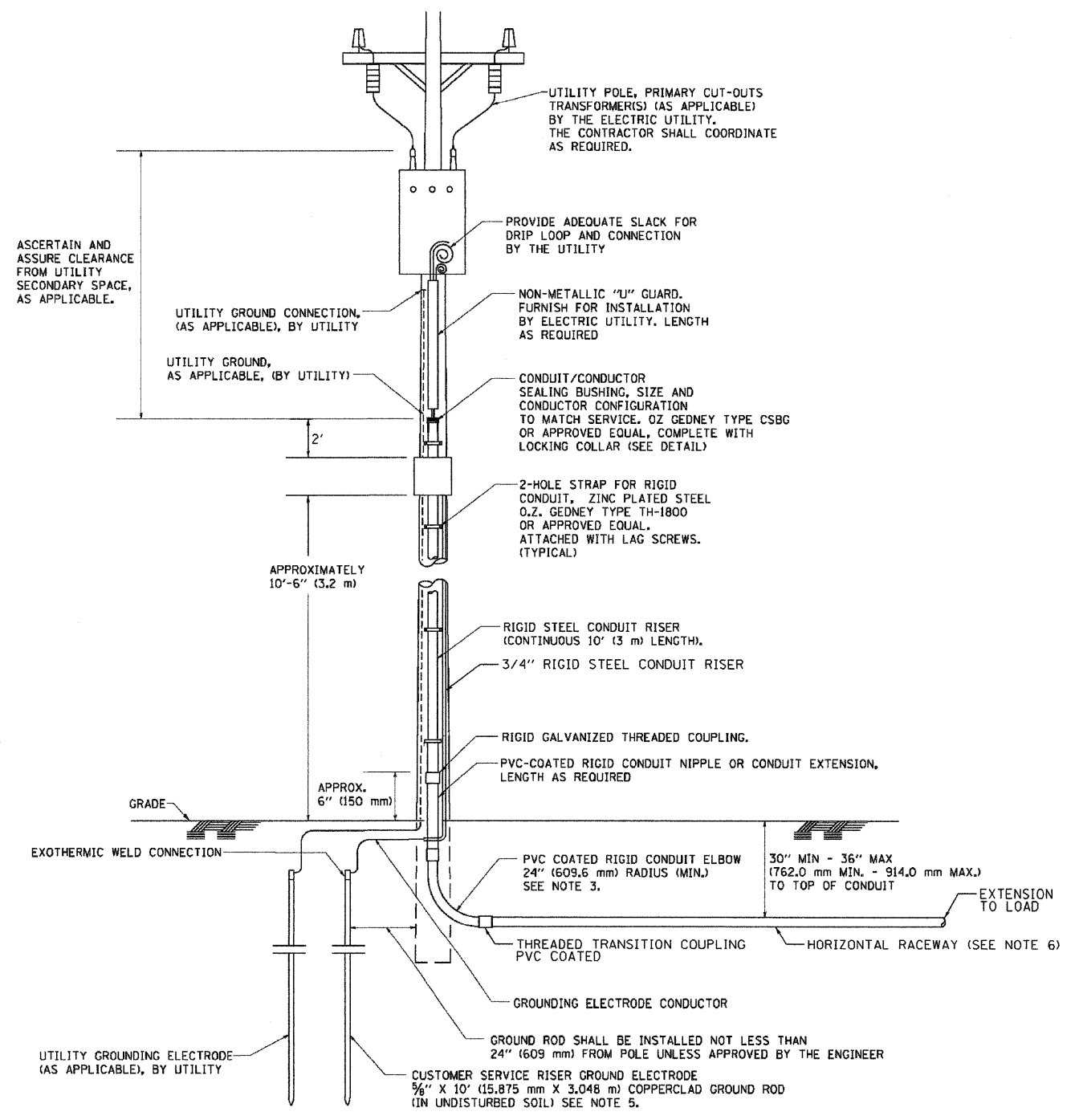
DISCONNECT MOUNTING DETAIL
NOT TO SCALE

NOTES

1. ELECTRIC SERVICE SHALL BE OF THE VOLTAGE INDICATED OR DESIGNATED BY THE ENGINEER, AND SERVICE DROP CABLE SHALL BE COMPATIBLE WITH THE SERVICE ACCORDINGLY.
2. THE POLE-MOUNTED ELECTRIC SERVICE BOX SHALL BE CONFIGURED AND FULLY EQUIPPED FOR 120V 2W SERVICE, COMPLETE WITH MAIN BREAKER.
3. THE ELECTRIC SERVICE EQUIPMENT ASSEMBLY SHALL BE UL LISTED AS SUITABLE FOR USE AS SERVICE ENTRANCE EQUIPMENT.
4. THE ELECTRIC SERVICE EQUIPMENT ENCLOSURE SHALL BE NEMA 4X STAINLESS STEEL, NOMINALLY, WITH A PIANO-HINGED DOOR, STEEL BACK PANEL, FAST-ACTING STAINLESS STEEL ENCLOSURE CLAMPS, PADDOCK PROVISIONS AND DOOR STOP.
5. CIRCUIT BREAKER SHALL BE THERMAL MAGNETIC BOLT-ON TYPE WITH A MINIMUM INTERRUPTING CAPACITY OF 25,000 SYMMETRICAL AMPERES AT 120 VOLTS. IT SHALL BE LOCKABLE IN THE "OFF" POSITION FOR COMPLIANCE WITH OSHA LOCK-OUT/TAG-OUT REQUIREMENTS. HANDLE SHALL BE TRIP FREE.
6. THE SURGE PROTECTOR SHALL BE SUITABLE FOR THE SERVICE VOLTAGE SINGLE PHASE 60HZ AC, WITH A SURGE ENERGY CAPABILITY OF 2160 JOULES OR BETTER AT 8/20 MICRO-SECONDS, RATED -40 TO 60 DEGREES C., WITH LED OPERATING INDICATORS, AND SHALL BE UL LISTED PER UL 1449 OR APPROVED EQUAL.
7. BUS BARS, CONNECTORS, AND LUGS SHALL BE COPPER, INSULATED AND ISOLATED, AND CONFIGURED TO PREVENT SHORTED CONDITIONS FROM TIGHTENING TERMINATIONS, ETC. THE OVERALL BUS SECTION SHALL BE CONFIGURED BEHIND AN INSULATING BARRIER SHIELD WHICH IS REMOVABLE FOR ACCESS TO CONNECTIONS.
8. THE COMBINATION GROUND AND NEUTRAL BAR SHALL BE CONFIGURED WITH SEPARATE GROUND AND NEUTRAL SECTIONS AND SPARE TERMINALS AS INDICATED. THE HEADS OF GROUND SCREWS SHALL BE PAINTED GREEN. THE HEADS OF NEUTRAL SCREWS SHALL BE PAINTED WHITE. THE SERVICE NEUTRAL AND SERVICE GROUNDING ELECTRODE CONDUCTOR SHALL BE TERMINATED ADJACENT TO EACH OTHER AT THE DIVIDE BETWEEN THE SECTIONS AND WIRING SHALL BE TERMINATED ONLY UPON THE APPROPRIATE SECTION.
9. THE WIRING TERMINALS, INCLUDING THE GROUND/NEUTRAL BAR SHALL BE ARRANGED TO PROVIDE ADEQUATE ROOM FOR PERFORMING FIELD TERMINATIONS.
10. A PLASTIC LAMINATED LAYOUT AND CIRCUIT DIAGRAM SHALL BE MECHANICALLY SECURED TO THE INTERIOR SIDE OF THE ENCLOSURE DOOR.
11. LUGS AND CONNECTORS SHALL BE RATED FOR 90 C CONDUCTOR.
12. THE EXACT MOUNTING HEIGHT OF THE BOX SHALL BE FIELD DETERMINED TO AVOID OBSTRUCTIONS AND PUBLIC ACCESS. TYPICAL HEIGHT SHALL BE APPROXIMATELY 10 FEET ABOVE GRADE.
13. ENCLOSURE SHALL BE NO LARGER THAN 20" X 16" X 8", UNLESS APPROVED BY COMED.
14. PVC COATED RACEWAYS AND ACCESSORIES SHALL BE CAREFULLY INSTALLED WITH MFR RECOMMENDED TOOLS AND PROCEDURES TO AVOID DAMAGE. ANY DAMAGE SHALL BE REPAIRED WITH COMPATIBLE PVC TOUCH-UP MATERIAL TO THE SATISFACTION OF THE ENGINEER OR THE DAMAGED MATERIAL SHALL BE REPLACED AT NO ADDITIONAL COST.
15. THE CONTRACTOR SHALL OBTAIN INSPECTION AND APPROVAL BY THE ENGINEER OF SERVICE RISER GROUND ELECTRODE, RISER ELBOW, NIPPLE AND CONNECTION TO SERVICE CONDUCTOR RACEWAY EXTENSION BEFORE BACKFILL AND SHALL ALSO OBTAIN INSPECTION OF SERVICE RISER AND SEALING BUSHING BEFORE UTILITY "U" GUARD INSTALLTION AND SERVICE CONNECTION.
16. THE HORIZONTAL RACEWAY SHALL BE AS INDICATED AND SHALL BE MEASURED SEPARATELY FOR PAYMENT.
17. PLANS AND DETAILS INDICATE THE GENERAL NATURE AND REQUIREMENTS. THEY DO NOT SHOW EVERY ACCESSORY AND ATTACHEMENT, AND THEY DO NOT RELIEVE THE CONTRACTOR OF THE REQUIREMENTS OF THE SPECIFICATIONS AND SPECIAL PROVISIONS TO ASCERTAIN UTILITY REQUIREMENTS AND TO COORDINATE ACCORDINGLY. FURNISHING SERVICE INSTALLATION IS REQUIRED AND SHALL BE INCLUDED IN THE SERVICE INSTALLATION, TYPE C (SPECIAL) PAY ITEMS.



SEALING BUSHING DETAIL



\\saw-202-public\pwr-0\00003398.dwg Design:Lightung Details 03/29/08 11:48:08 AM

<p>ENGINEERING CONSULTANT Ciorba Group, Inc. CONSULTING ENGINEERS 5607 North Cumberland Avenue, Suite 402 Chicago, Illinois 60630 Tel: 773.775.4020 Fax: 773.775.4014 Email: cgroup@ciorba.com</p>	USER NAME = wjancaster	DESIGNED - JMV	REVISED - 10/5/2011	<p align="center">STATE OF ILLINOIS DEPARTMENT OF TRANSPORTATION</p>	<p align="center">ILL. 50 OVER THE CAL SAG CHANNEL STRUCTURE NO. 016-0421 SERVICE INSTALLATION, TYPE C (SPECIAL) DETAIL</p>	F.A.P. RTE. = 350	SECTION = 3068 A-B-R-1	COUNTY = COOK	TOTAL SHEETS = 57	SHEET NO. = 18
	PLOT SCALE = 2.0000' / 1"	DRAWN - JMK	REVISED - ADDENDUM #1			SCALE: SHEET NO. OF SHEETS STA. TO STA.	CONTRACT NO. 60N88	ILLINOIS FED. AID PROJECT		
PLOT DATE = 10/5/2011	DATE = 9/2/11	REVISID -	REVISID -							