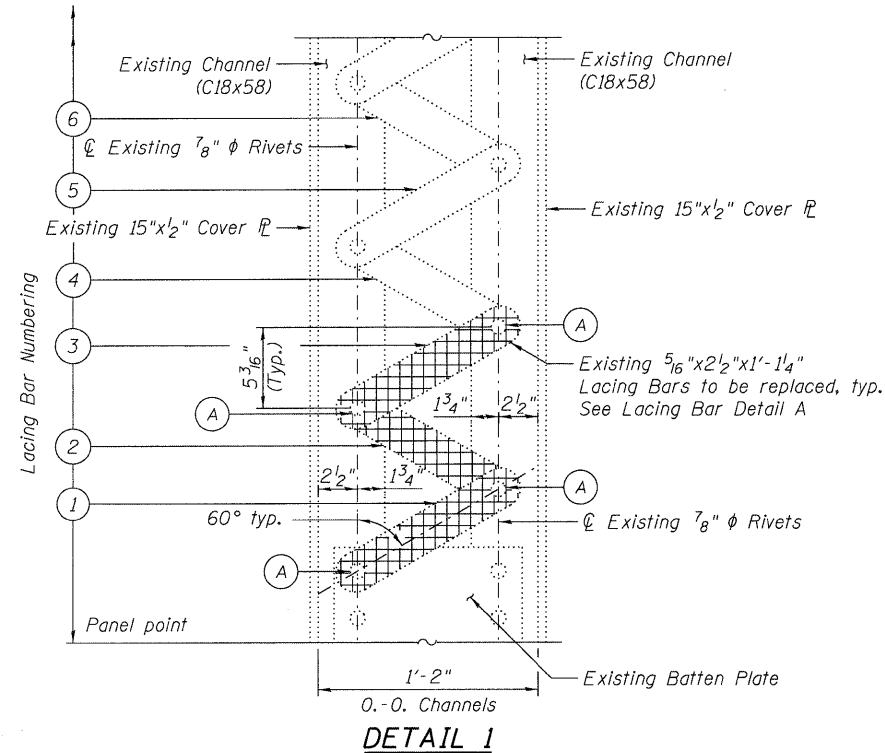
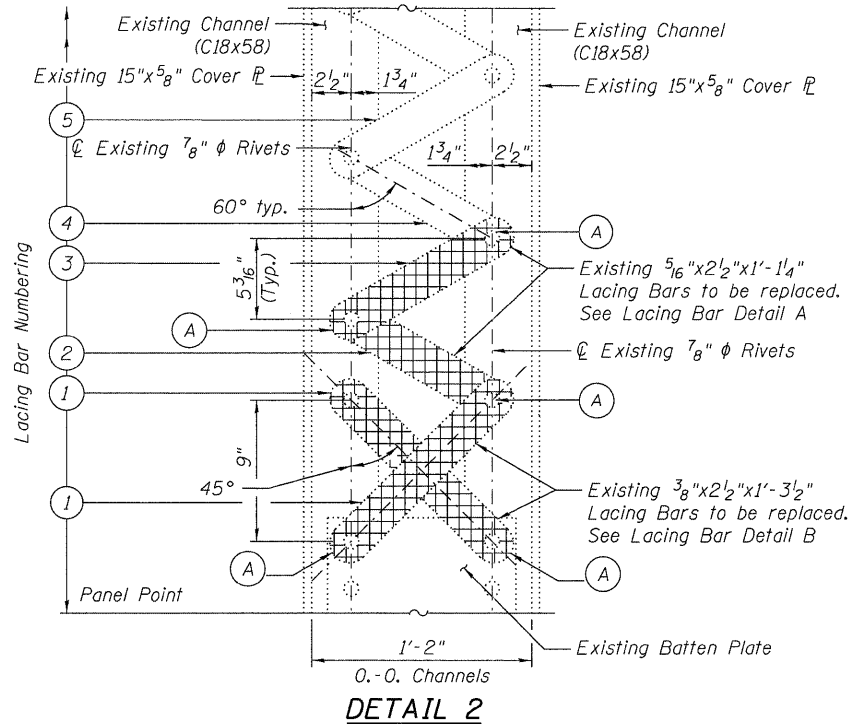


N:\PROJ\03398\00\Design\Structural\CAD\03398_00_10_Steel Repairs.dwg
 03/11/2011 10:58:00 AM
 03398_00_10_Steel Repairs.dwg



DETAIL 1
TYPICAL LACING BAR DETAIL AT L2-L4, L6-L8



DETAIL 2
TYPICAL LACING BAR DETAIL AT L4-L6

LACING BAR RETROFIT AT LOWER CHORDS

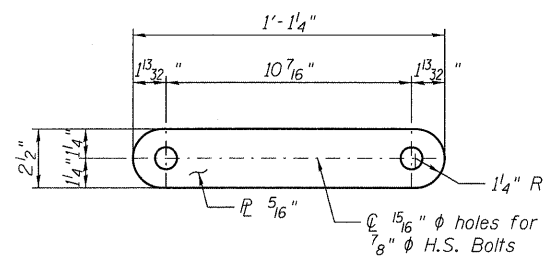
(Retrofit Applied Only to Bottom Lacing Bars of Lower Chord)

- (A) Remove the lacing bars and existing 7/8" φ rivets from the surface of the channel flange. Existing rivets which are adjacent to lacing bars to remain in place shall not be burned off. Existing rivets which are adjacent to lacing bars to be removed may be burned off. All rivet removal shall be in accordance with the Special Provision for Structural Steel Repair.

LACING BARS TO BE REPLACED

LOCATION	STARTING FROM PANEL POINT	LACING BAR NUMBER*
L4E-L5E	L5E	1-3, 8-16, 32-38, 41
L5E-L6E	L5E	1, 2, 7, 9, 18
L6E-L7E	L7E	12-19, 26, 37, 42, 48
L7E-L8E	L8E	1-8, 10, 18, 22, 26, 28, 30, 31

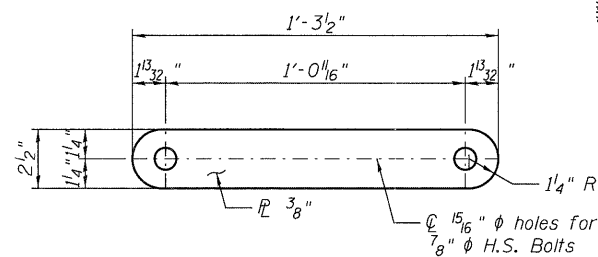
*Lacing Numbering starts at Panel Point indicated. Lacing Bar numbered "1" in location L4-L5 or L5-L6 include both crossed lacing bars next to panel point.



LACING BAR DETAIL A

(50 Required)

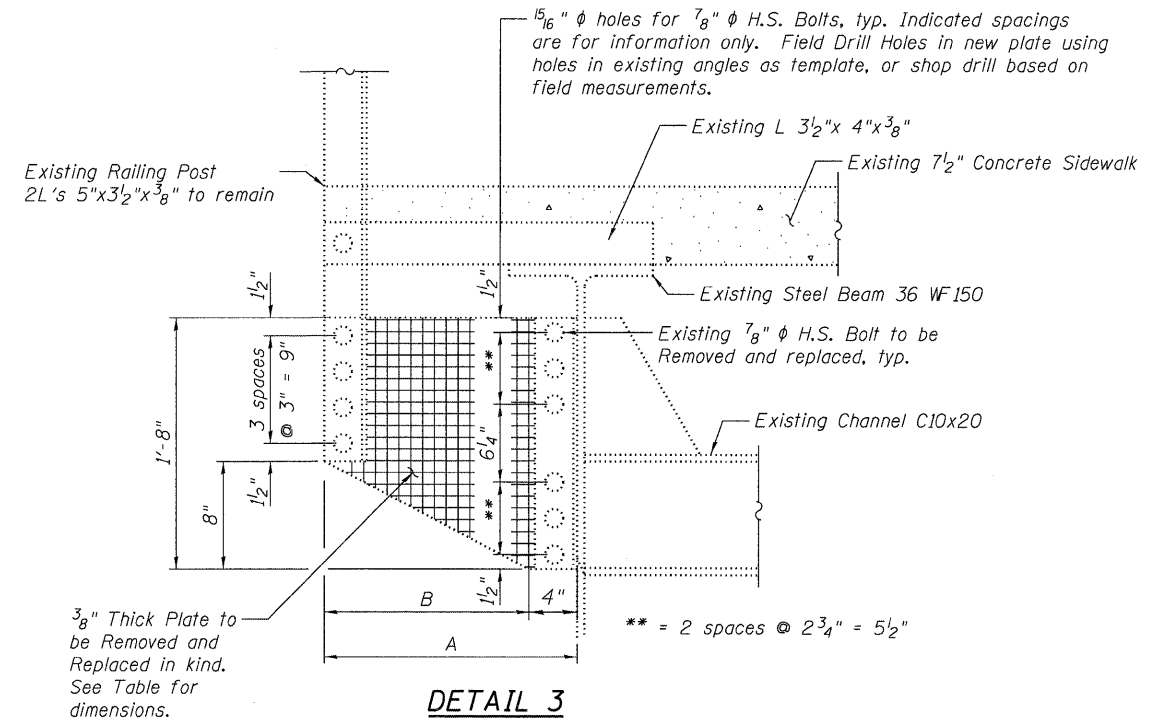
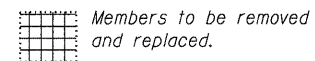
Field drill holes in plate using holes in existing channels as templates, or shop drill based on field requirements.



LACING BAR DETAIL B

(4 Required)

LEGEND:



DETAIL 3
Approach span Cantilever Railing Bracket Repairs

TABLE - BRACKET DIMENSIONS

BRACKET	A	B
A	2' - 7 1/2"	2' - 3 1/2"
B	2' - 4"	2' - 0"
C	2' - 0 1/2"	1' - 8 1/2"
D	1' - 9"	1' - 5"
E	1' - 5 3/8"	1' - 1 3/8"
F	1' - 1 7/8"	0' - 9 7/8"
G	1' - 3 5/8"	0' - 11 5/8"
H	1' - 8 7/8"	1' - 4 7/8"
I	2' - 2 1/4"	1' - 10 1/4"
J	2' - 7 1/2"	2' - 3 1/2"

See Framing Plan for location.
All new brackets are 3/8" thick plates.

NOTES:

- The Contractor shall verify all dimensions in the field before ordering lacing bars.
- Only two lacing bars may be removed at a time. When lacing bars are removed, the proposed lacing bars must be in place and the bolts tightened before additional lacing bars are removed.
- Repairs should include but not be limited to the areas shown. The actual areas to be determined by the Engineer at the time of Construction.
- If lacing bar to be replaced is under lacing bar to remain, the Contractor shall take care when removing the rivet so as to not to damage the top lacing bar to remain in place. If the top lacing bar is damaged, the cost of replacing the lacing bar will be at the Contractor's expense.
- Cost of materials, drilling holes and removing rivets to make structural steel repairs are included in pay item for "Structural Steel Repair".