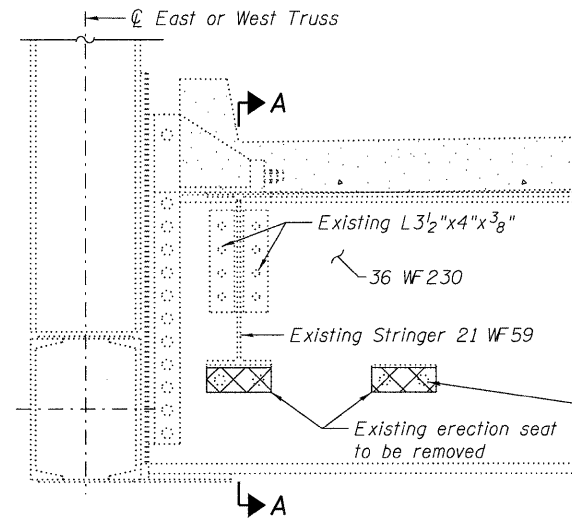
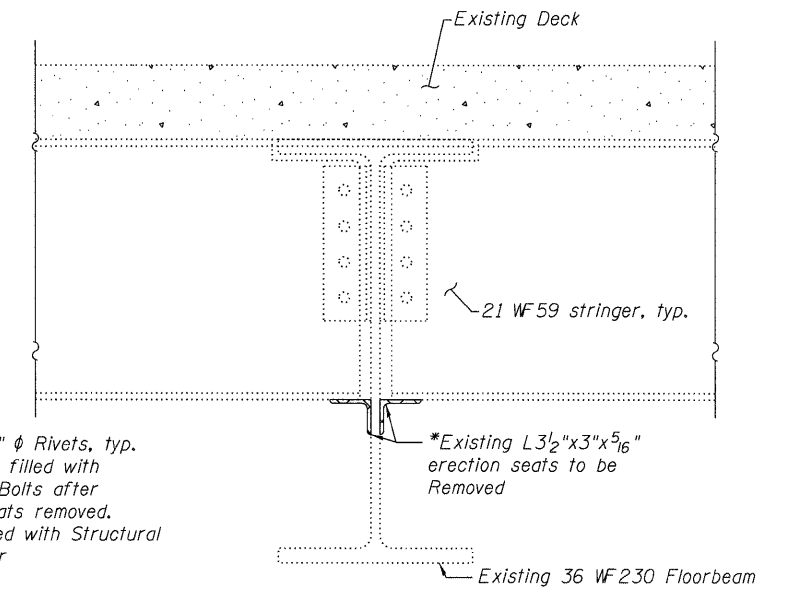


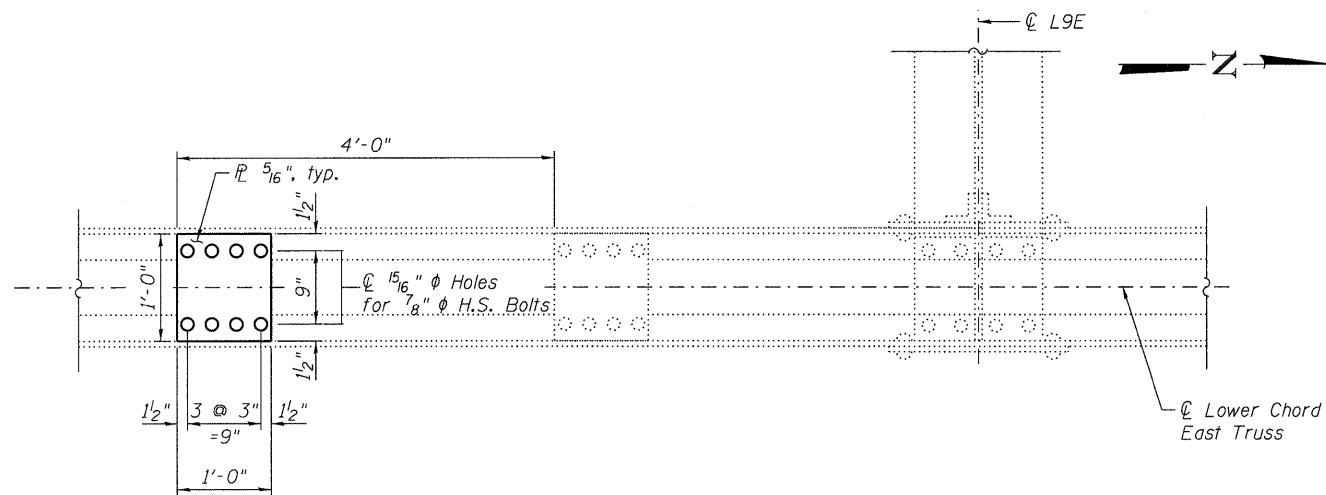
DETAIL 7 - STAY PLATE BETWEEN PANEL POINTS
ELEVATION
 (Looking West)



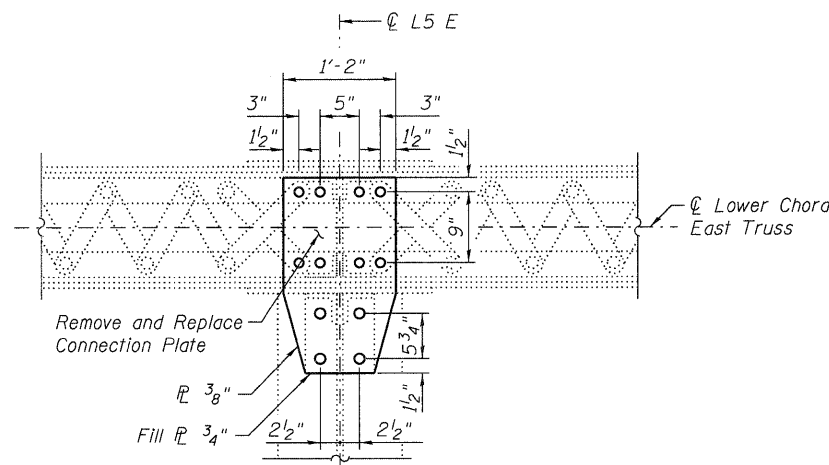
DETAIL 8
ANGLE SEAT REMOVAL
 (144 Thus)



*Existing rivets adjacent to erection seats to be removed may be burned off. All rivet removal shall follow Structural Steel Repair Special Provision. Cost included with Structural Steel Repair.



PLAN
 (Top & Bottom)



DETAIL 9
CONNECTION PLATE REPAIR AT L5E
 (Underside Plan)

NOTES:

- Repairs should include but not be limited to the areas shown. The actual areas to be determined by the Engineer at the time of construction.
- All plate replacements shown are "in-kind". Existing plates to be removed and replaced, not shown for clarity.
- Holes in stay plates and connection plates shall be subpunched or subdrilled 15/16" ϕ and reamed in the field to 15/16" ϕ for 7/8" ϕ H.S. bolts.
- One stay plate shall be removed and replaced at a time. When stay plates are removed, the proposed stay plate must be in place and the bolts tightened before additional stay plates are removed.

STAY PLATES TO BE REPLACED BETWEEN PANEL POINTS

| Location | Starting From Panel Point | Stay Plate Number |
|-----------------|---------------------------|-------------------|
| L9E-L10E Top | L9E | 2, 3, 4 |
| L9E-L10E Bottom | L9E | 4, 5 |

(5 Thus)

LEGEND

Existing to be removed

NA:\PROJ\033958\00\Design\Structural\CAD\033958\00_12_Steel_Repairs_III.dgn