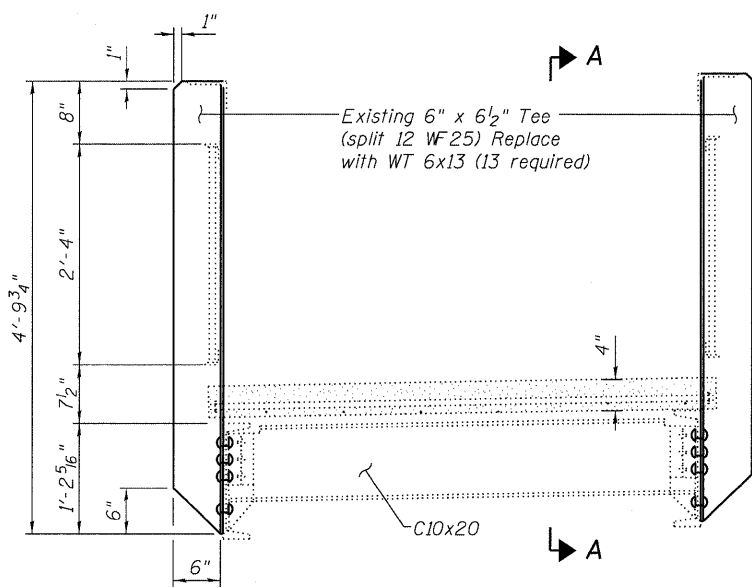
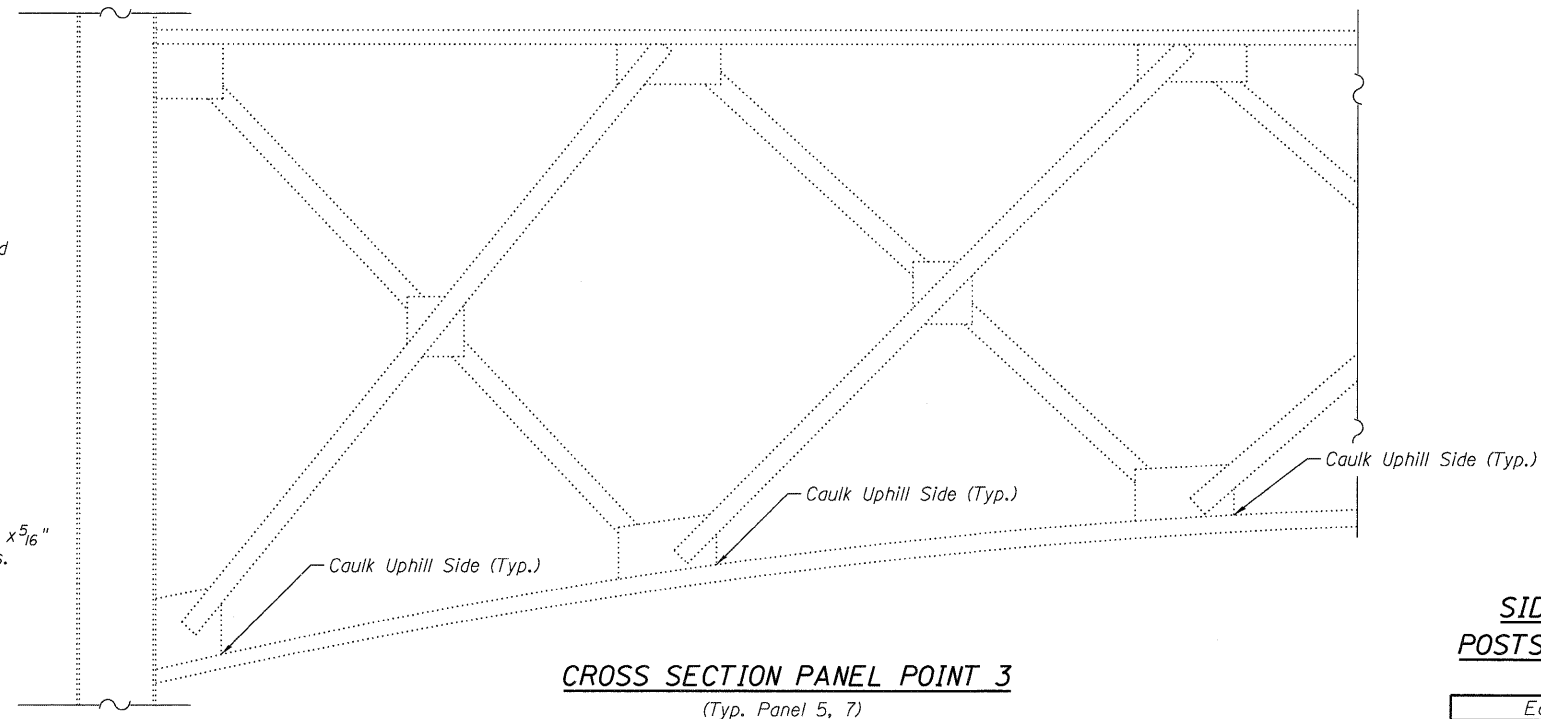


SECTION @ PANEL POINT



SECTION @ THIRD PANEL POINT

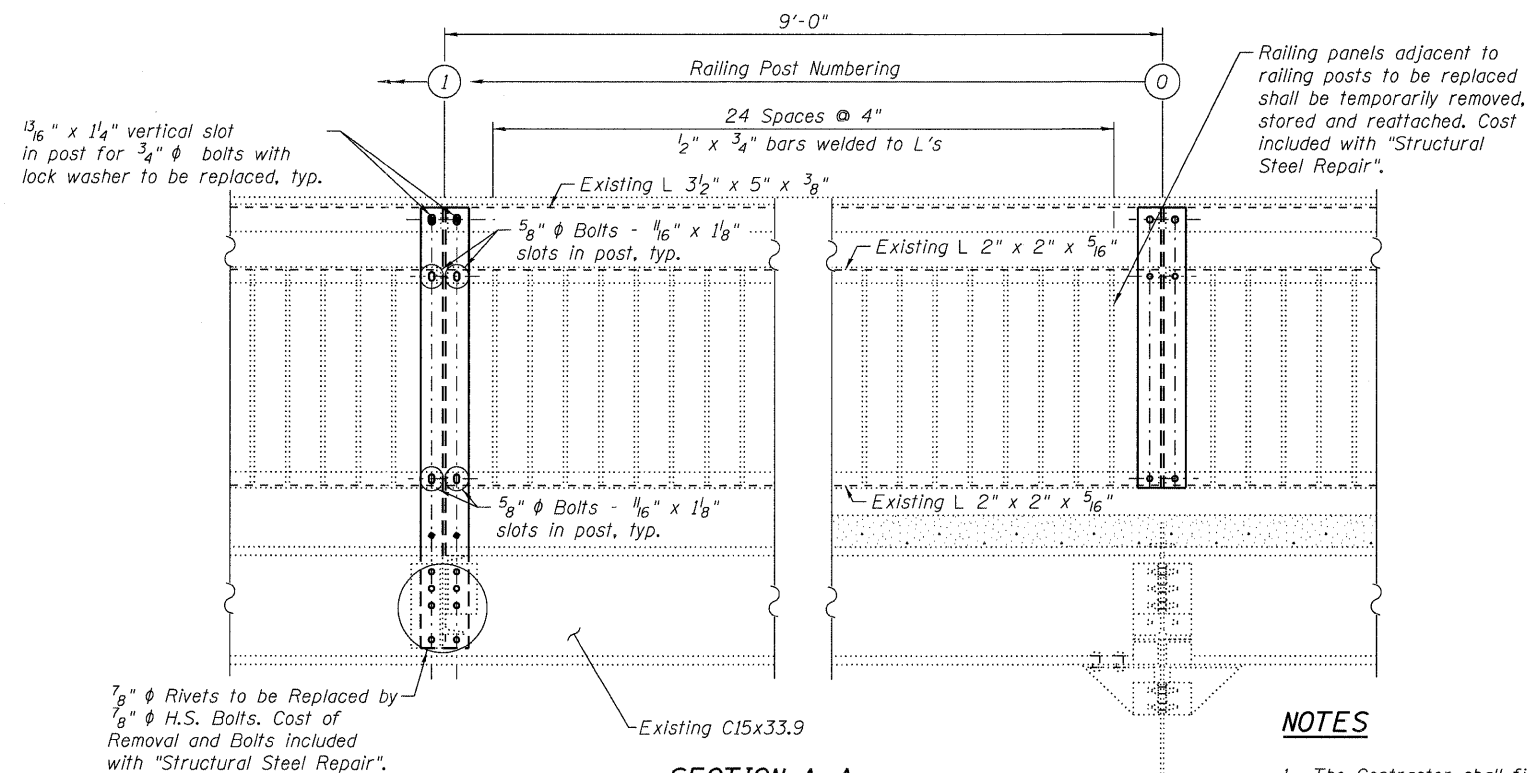


CROSS SECTION PANEL POINT 3

(Typ. Panel 5, 7)

CAULKING DETAIL

Caulk shall be applied to the designated locations to prevent moisture penetration between steel plys. Silicone caulk shall be used in accordance with manufacturers recommendations and the cost shall be included in the cost of "Cleaning and Painting Steel Bridge No. 1".



SECTION A-A

Showing Elevation of inside sidewalk railing outside similar

RAIL POST REPAIRS

NOTES

1. The Contractor shall field verify the dimensions of the proposed sidewalk railing posts and the layout of the fastener holes prior to ordering material.
2. Repairs should include but not be limited to the areas shown. The actual areas to be determined by the Engineer at the time of Construction.

SIDEWALK RAILING POSTS TO BE REPLACED

East Truss Inside Rail		
Location	Starting From Panel Point	Railing Post Number
L0-L1	L0	0, 1
L1-L2	L1	1
L3-L4	L3	2
L4-L5	L4	1
L5-L6	L5	1
L6-L7	L6	1
L8-L9	L8	1
L9-L10	L9	1
East Truss Outside Rail		
Location	Starting From Panel Point	Railing Post Number
L0-L1	L0	0
L2-L3	L2	0
L9-L10	L9	3
West Truss Inside Rail		
Location	Starting From Panel Point	Railing Post Number
L0-L1	L0	0
L4-L5	L4	2
L5-L6	L5	2
L7-L8	L7	1
L9-L10	L9	2
West Truss Outside Rail		
Location	Starting From Panel Point	Railing Post Number
L0-L1	L0	0
L2-L3	L2	0
L7-L8	L7	0
L9-L10	L9	1, 3

NA:PROJ\03398.00\Design\Structure1\CAD\03398.00_14_Steel Repairs_V.dgn