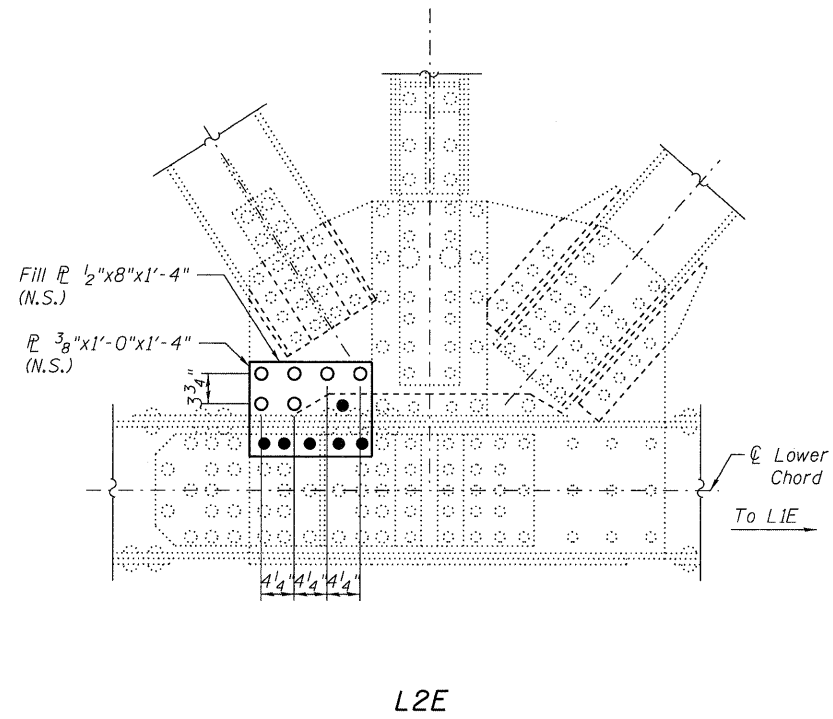
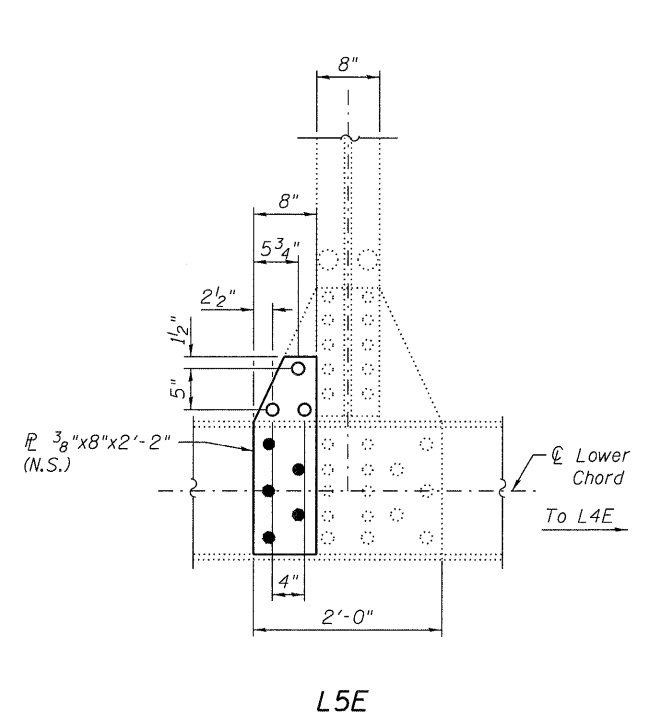


L1E
EAST GUSSET R ELEVATION - PROPOSED
AT JOINT L1E
EAST TRUSS
 (Looking West)



L2E
EAST GUSSET R ELEVATION - PROPOSED
AT JOINT L2E
EAST TRUSS
 (Looking West)



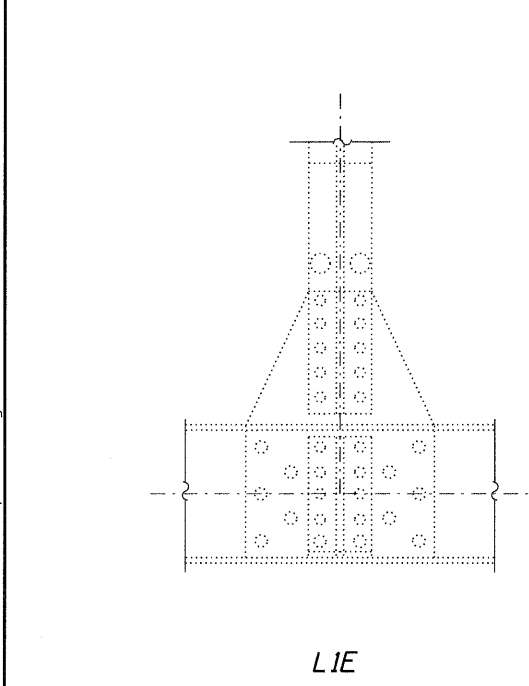
L5E
EAST GUSSET R ELEVATION - PROPOSED
AT JOINT L5E
EAST TRUSS
 (Looking West)

LEGEND:

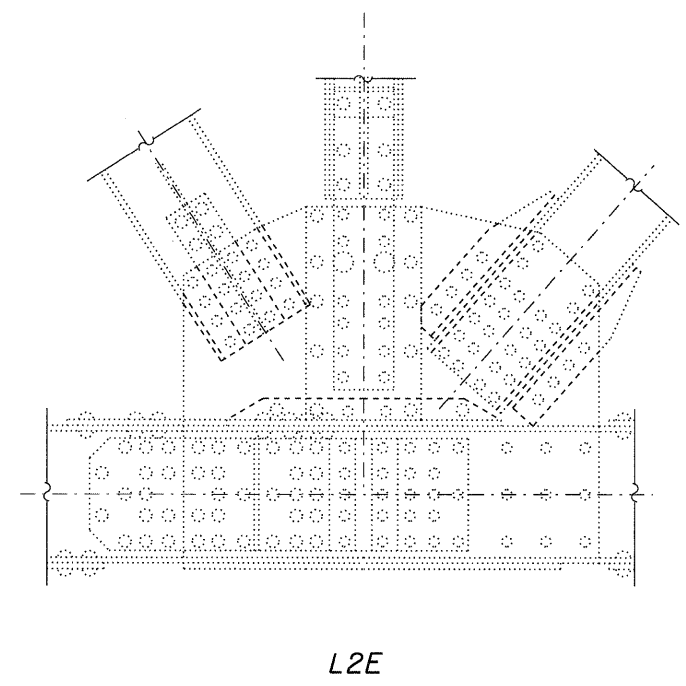
- Indicates 5/16" φ shop drilled holes for 7/8" φ H.S. bolts. Contractor may elect to field drill holes.
- Indicates 5/16" φ field drill holes for 7/8" φ H.S. bolts.
- N.S. = Near Side
- F.S. = Far Side

NOTES:

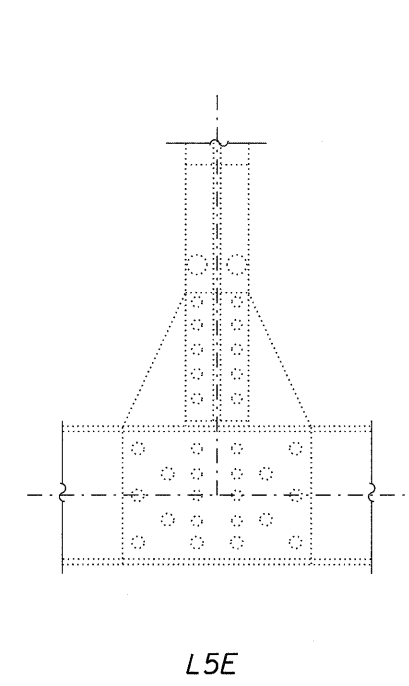
1. The Contractor shall field verify the dimensions of the proposed connection plates, connection angles and the layout of the fastener holes prior to ordering materials. The minimum distance between the centers of any of the holes in any direction shall not be less than 2 3/8". The Bureau of Bridges and Structures shall be contacted for further disposition if the field measurements indicate that the location of the existing fasteners result in a center-to-center spacing of the holes in the proposed connection plates or connection angles of less than the minimum specified.
2. Existing gusset plate rivets are to be replaced one at a time with High Strength Bolts. At no time shall there be more than one empty fastener hole, however removal and replacement of the rivets for the inside and outside gusset plates may be done simultaneously. After the removal of each rivet, the holes shall be reamed to 5/16" φ, 7/8" φ H.S. Bolt placed in the hole, and the nut hand tightened. After the specified rivets have been removed, the nuts can be removed, plate installed, and the nuts reinstalled.
3. The Contractor shall field verify the required bolt length and length of thread necessary to install all bolts in accordance with the Standard Specifications and Section 8.2.1 of the 2004 RCSC "Specification for Structural Joints Using ASTM A325 or A490 Bolts".
4. Repairs should include but not be limited to the areas shown. The actual areas to be determined by the Engineer at the time of Construction.
5. Work this sheet with Sheet S-18 thru S-21.



L1E
EAST GUSSET R ELEVATION - EXISTING
AT JOINT L1E
EAST TRUSS
 (Looking West)



L2E
EAST GUSSET R ELEVATION - EXISTING
AT JOINT L2E
EAST TRUSS
 (Looking West)



L5E
EAST GUSSET R ELEVATION - EXISTING
AT JOINT L5E
EAST TRUSS
 (Looking West)

N:\PROJ\03398\00\Design\Structural\CAD\03398\00_17_Steel Repairs VIII.dgn

CG **Clorba Group, Inc.**
 CONSULTING ENGINEERS
 600 North Commercial Avenue
 Suite 202 Chicago, Illinois 60658
 Tel: 773.772.4000
 Fax: 773.772.4011
 www.clorbagroup.com

USER NAME = akhan	DESIGNED - DL	REVISED -
PLOT SCALE = 1/8" = 1'-0"	CHECKED - BWS	REVISED -
PLOT DATE = 9/9/2011	DRAWN - LVH	REVISED -
	CHECKED - BWS	REVISED -

STATE OF ILLINOIS
DEPARTMENT OF TRANSPORTATION

STEEL REPAIRS VIII
STRUCTURE NO. 016-0421
 SHEET NO. S-17 OF S-27 SHEETS

F.A.P. RTE.	SECTION	COUNTY	TOTAL SHEETS	SHEET NO.
350	3068 A-B-R-1	COOK	57	40
			CONTRACT NO. 60N88	
ILLINOIS FED. AID PROJECT				