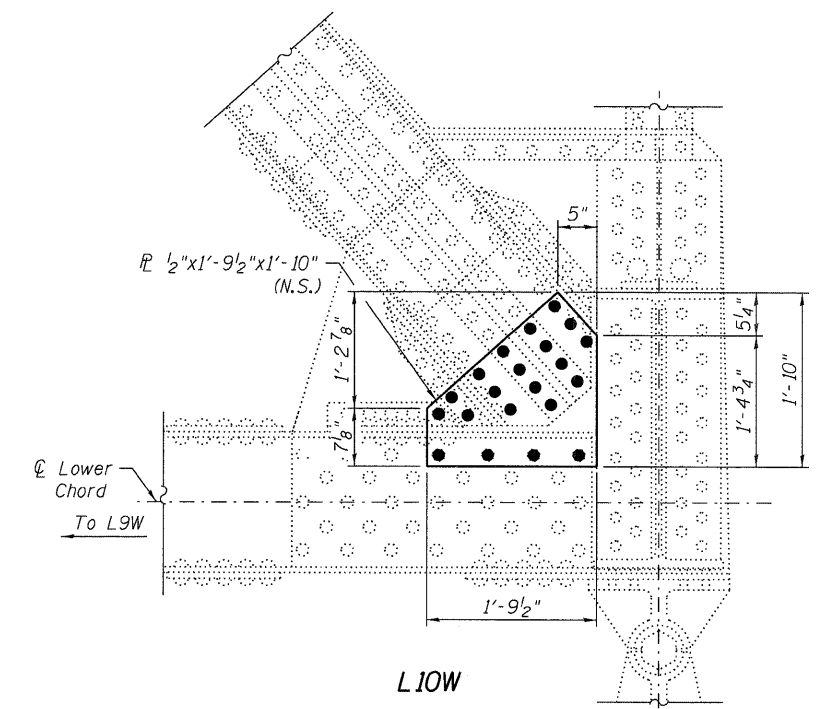
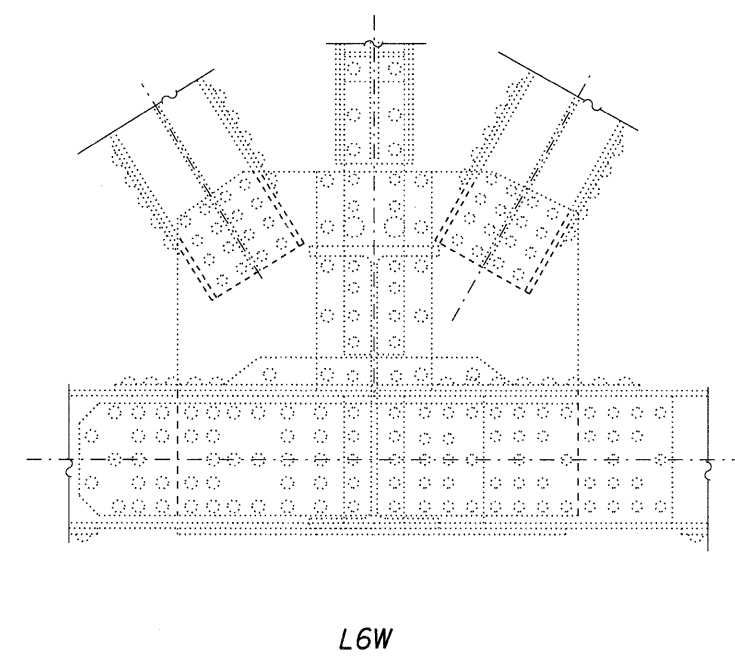


**EAST GUSSET P ELEVATION - PROPOSED**  
**AT JOINT L6W**  
**WEST TRUSS**  
 (Looking West)

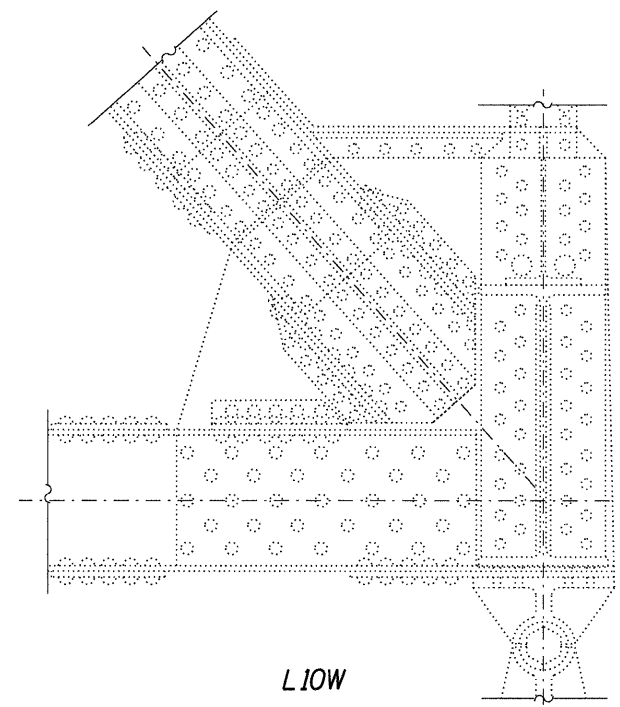


**WEST GUSSET P ELEVATION - PROPOSED**  
**AT JOINT L10W**  
**WEST TRUSS**  
 (Looking East)

Note:  
 For Repair Notes and Legend see Sheet S-17.



**EAST GUSSET P ELEVATION - EXISTING**  
**AT JOINT L6W**  
**WEST TRUSS**  
 (Looking West)



**WEST GUSSET P ELEVATION - EXISTING**  
**AT JOINT L10W**  
**WEST TRUSS**  
 (Looking East)

N:\PROJ\03398\00\Design\Structural\CAD\03398\00\_20\_Steel Repairs XI.dgn

**GG** **Clorba Group, Inc.**  
 CONSULTING ENGINEERS  
 1407 North Commercial Avenue  
 Suite 402 Chicago, Illinois 60655  
 Tel: 773.775.4500  
 Fax: 773.775.4514  
 Email: clorba@clorba.com

USER NAME = akhan	DESIGNED - DL	REVISED -
	CHECKED - BWS	REVISED -
PLOT SCALE = 1.000000' / in.	DRAWN - LVH	REVISED -
PLOT DATE = 9/9/2011	CHECKED - BWS	REVISED -

**STATE OF ILLINOIS**  
**DEPARTMENT OF TRANSPORTATION**

**STEEL REPAIRS XI**  
**STRUCTURE NO. 016-0421**  
 SHEET NO. S-20 OF S-27 SHEETS

F.A.P. RTE. 350	SECTION 3068 A-B-R-1	COUNTY COOK	TOTAL SHEETS 57	SHEET NO. 43
CONTRACT NO. 60N88			ILLINOIS FED. AID PROJECT	