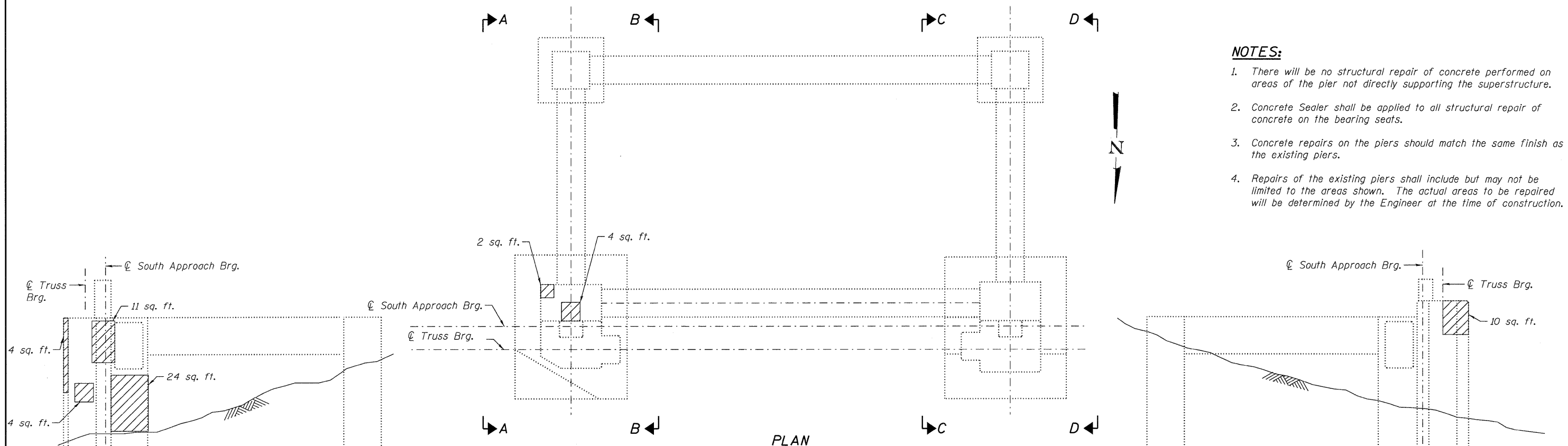
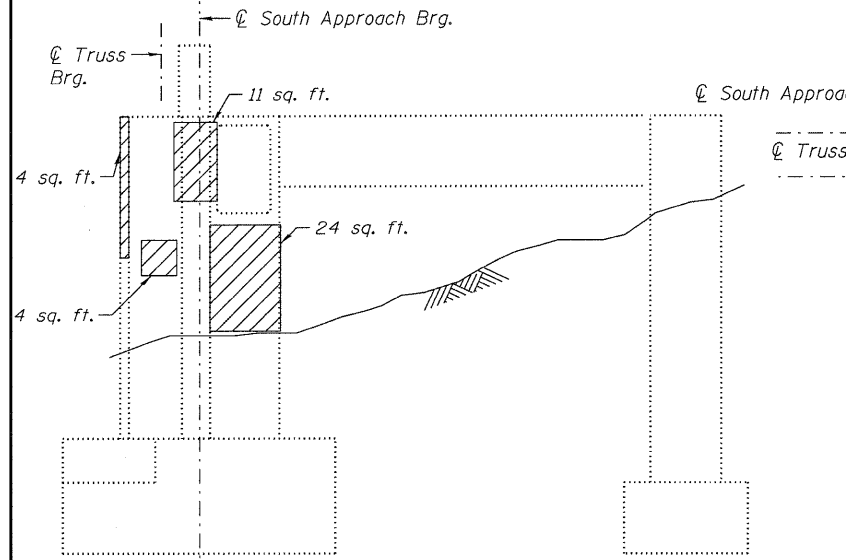


NOTES:

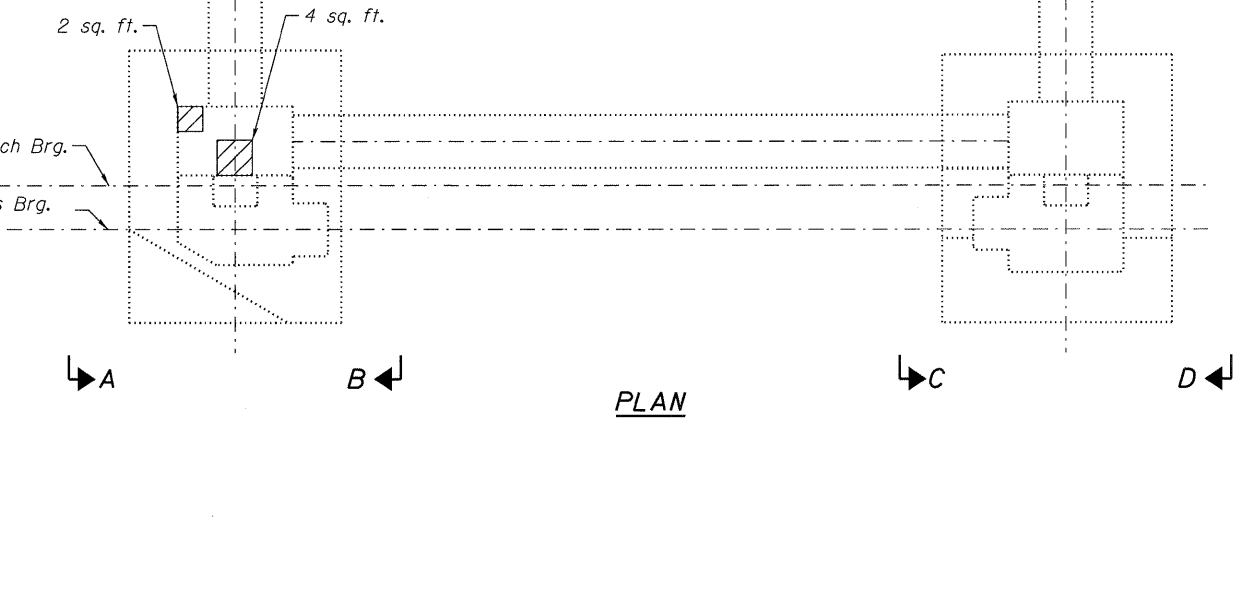
1. There will be no structural repair of concrete performed on areas of the pier not directly supporting the superstructure.
2. Concrete Sealer shall be applied to all structural repair of concrete on the bearing seats.
3. Concrete repairs on the piers should match the same finish as the existing piers.
4. Repairs of the existing piers shall include but may not be limited to the areas shown. The actual areas to be repaired will be determined by the Engineer at the time of construction.



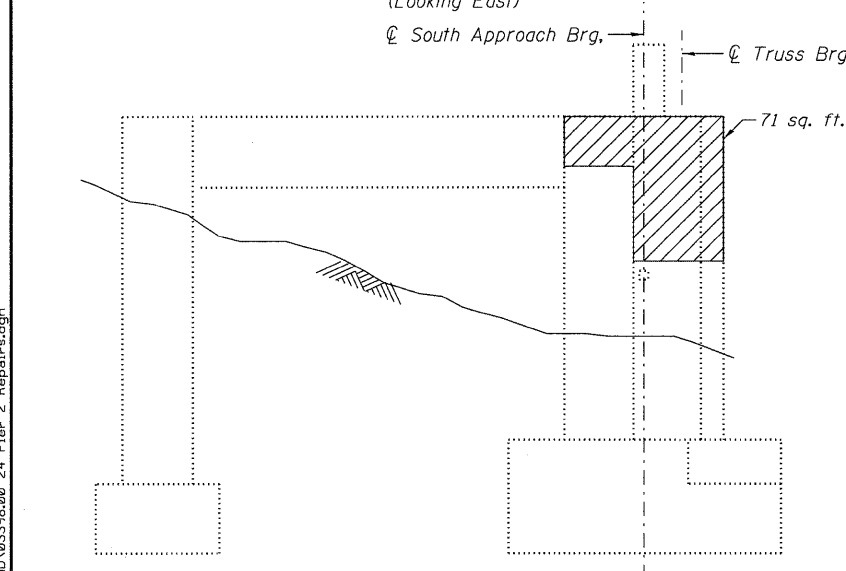
PLAN



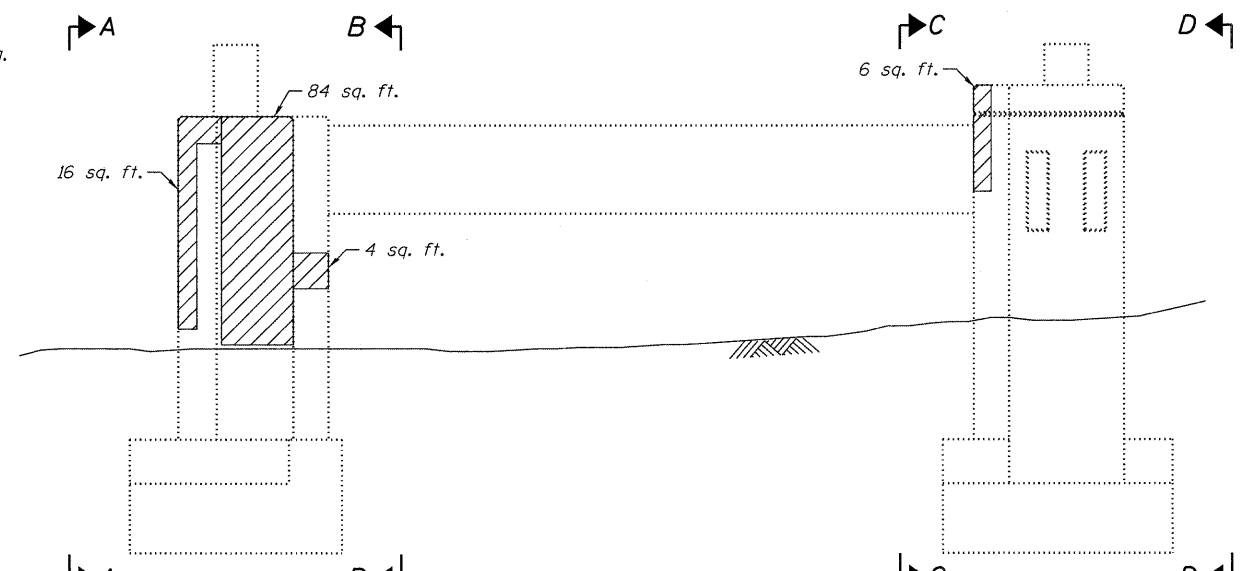
VIEW B-B
(Looking East)



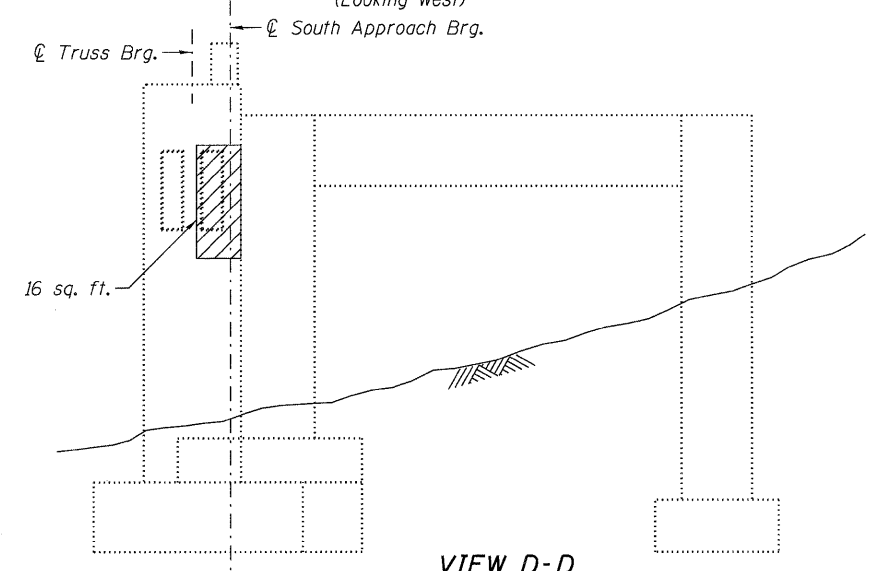
VIEW C-C
(Looking West)



VIEW A-A
(Looking West)



ELEVATION
(Looking South)



VIEW D-D
(Looking East)

LEGEND

Structural Repair of Concrete
(Depth Equal to or Less than 5 inches)

BILL OF MATERIAL

ITEM	UNIT	TOTAL
Structural Repair of Concrete (Depth Equal to or Less than 5 inches)	Sq. Ft.	256
Concrete Sealer	Sq. Ft.	4

N:\PROJ\03398\00\Design\Structural\CAD\03398\00_24_Pier_2_Repairs.dgn

Clorba Group, Inc.
CONSULTING ENGINEERS
600 North Commonwealth Avenue
Suite 400 Chicago, Illinois 60654
Tel: 773.776.4500
Fax: 773.776.4514
www.clorbagroup.com

USER NAME = ekhan	DESIGNED - BWS	REVISED -
PLOT SCALE = 5/4" = 1'-0"	CHECKED - AMK	REVISED -
PLOT DATE = 9/9/2011	DRAWN - RD	REVISED -
	CHECKED - AMK	REVISED -

STATE OF ILLINOIS
DEPARTMENT OF TRANSPORTATION

PIER 2 REPAIRS
STRUCTURE NO. 016-0421

SHEET NO. S-24 OF S-27 SHEETS

F.A.P. RTE.	SECTION	COUNTY	TOTAL SHEETS	SHEET NO.
350	3068 A-B-R-1	COOK	57	47
CONTRACT NO. 60N88			ILLINOIS FED. AID PROJECT	