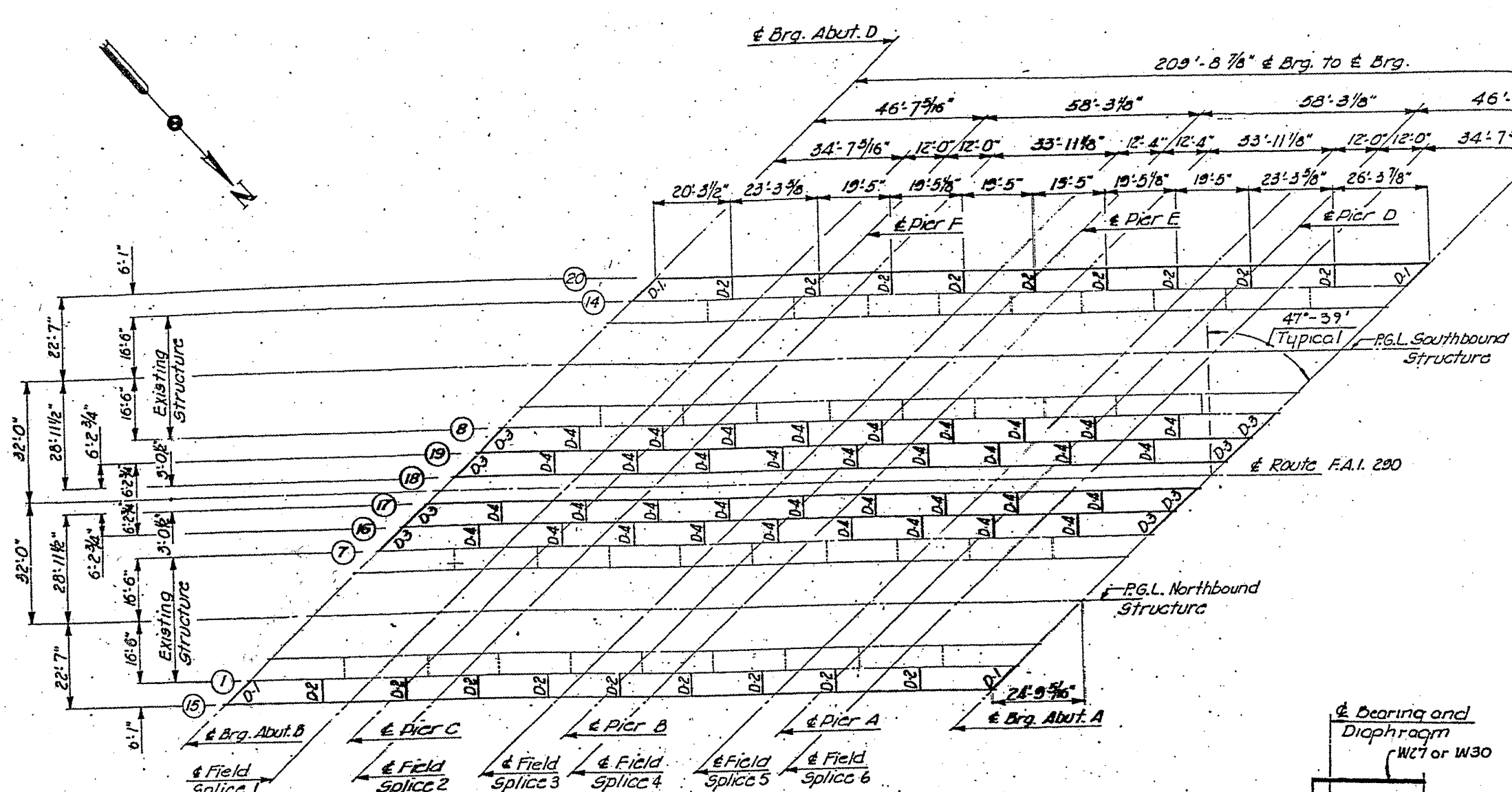


ROUTE FAI 290	SECTION 2011-047-BP	COUNTY COOK	TOTAL SHEETS 31	SHEET NUMBER 12
------------------	------------------------	----------------	--------------------	--------------------

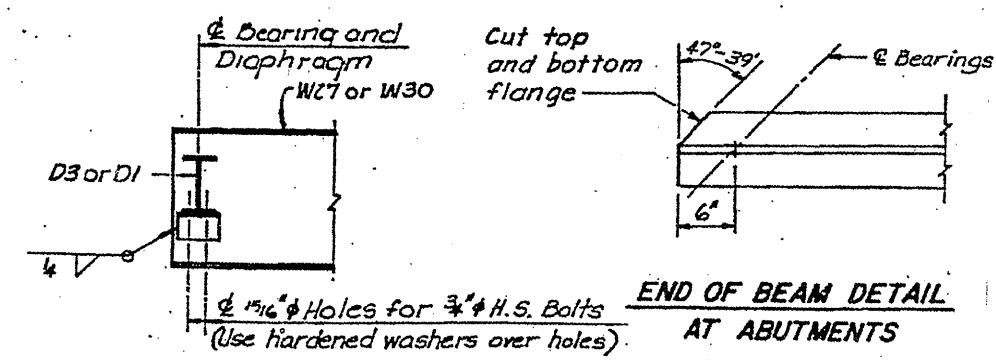
CONTRACT NO. 60P57



EXISTING BEAMS 1-7 AND 8-14 ARE W30X108 WITH 5'-6" SPACING.
EXISTING DIAPHRAGMS ARE W16X36.

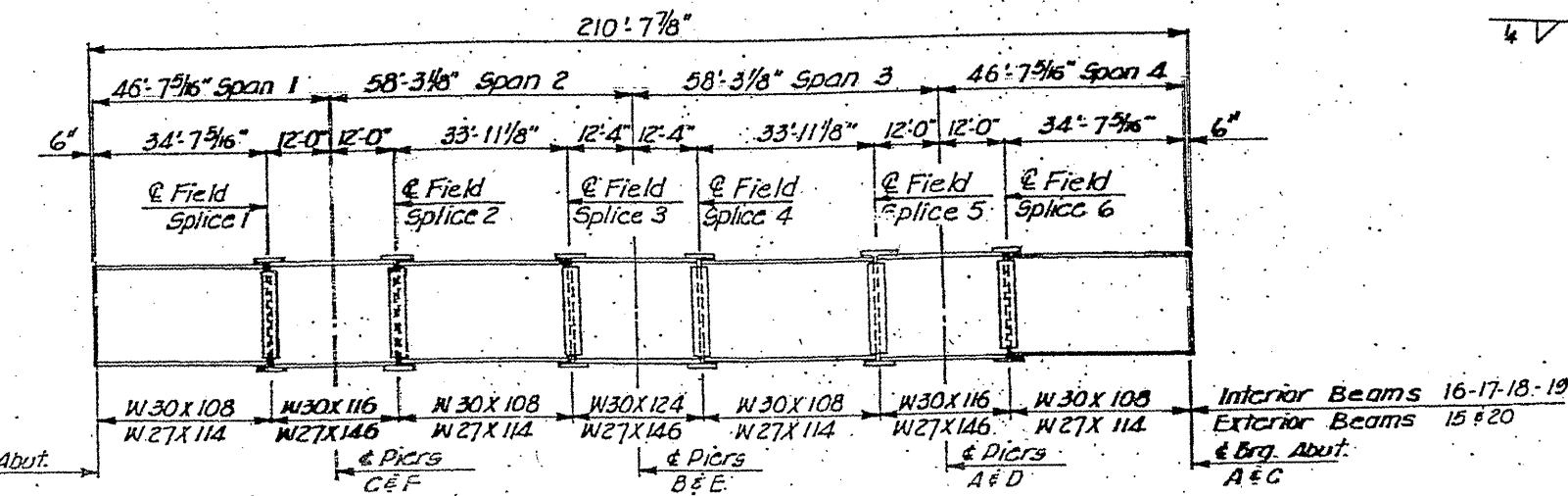
FOR INFORMATION ONLY

FRAMING PLAN



SECTION B-B

END OF BEAM DETAIL AT ABUTMENTS



ELEVATION

SHEET 2 OF 3

ILLINOIS DEPARTMENT OF TRANSPORTATION
EXISTING BRIDGE PLAN
SN 016-0083, -0084 (BRIDGE 1 & 2)