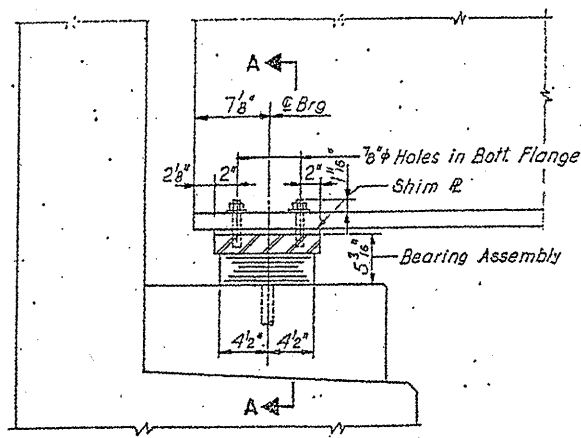


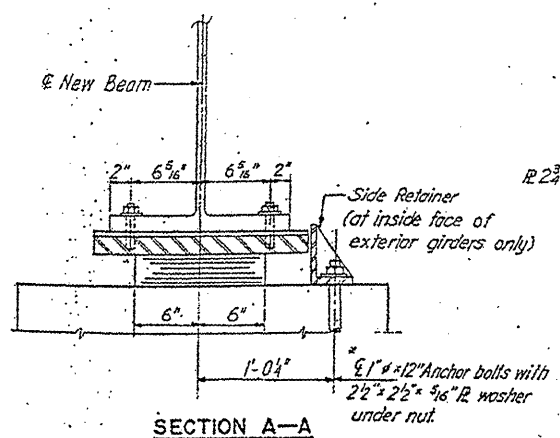
ROUTE	SECTION	COUNTY	TOTAL SHEETS	SHEET NUMBER
FAI 290	2011-047-BP	COOK	31	19

CONTRACT NO. 60P57



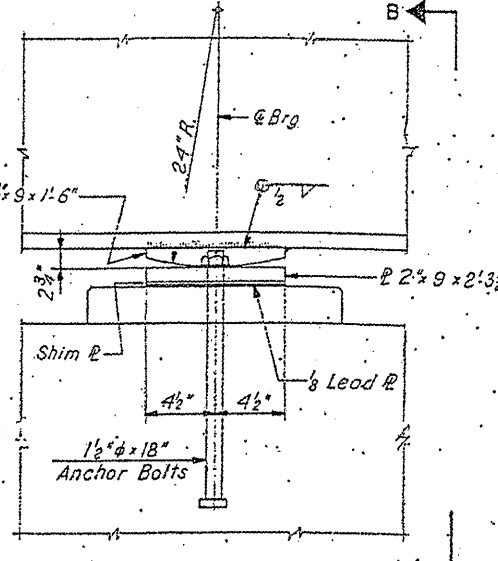
SECTION AT ABUT.

TYPE I ELASTOMERIC EXP BRG.
4 Required
(NOT PART OF THIS CONTRACT)



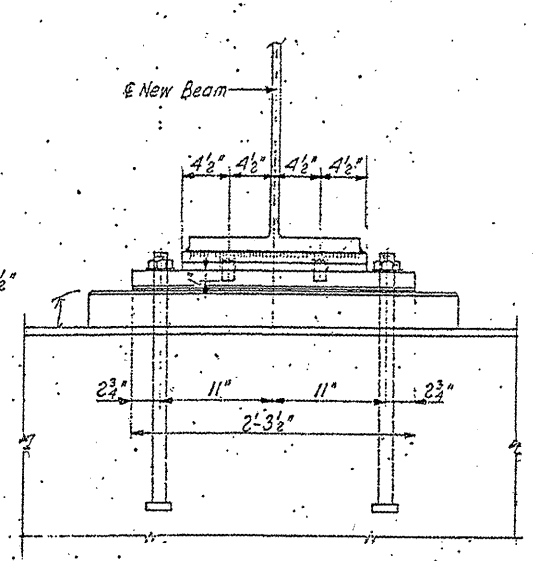
SECTION A-A

*Note: After girders have been erected holes of expansion bearings shall be drilled and anchor bolts grouted in place. Anchor bolts of fixed bearings may be built into the masonry.

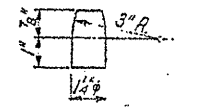


ELEVATION AT PIER

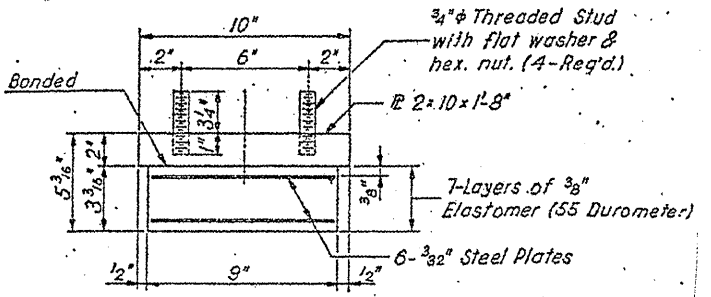
FIXED BEARING
2 Required
(NOT PART OF THIS CONTRACT)



SECTION B-B

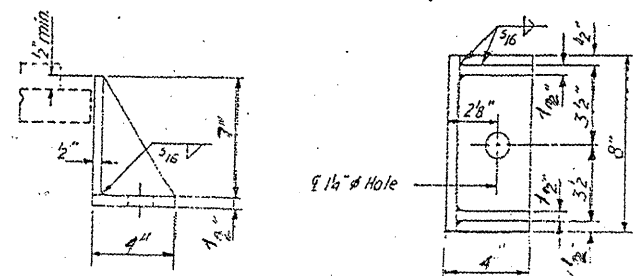


DETAIL OF PINTLE



BEARING ASSEMBLY

Note: Shim plates shall not be placed under Bearing Assembly.



SIDE RETAINER

FOR INFORMATION ONLY

SHEET 3 OF 4

ILLINOIS DEPARTMENT OF
TRANSPORTATION

EXISTING BRIDGE PLAN
SN 016-0090 (BRIDGE 4)