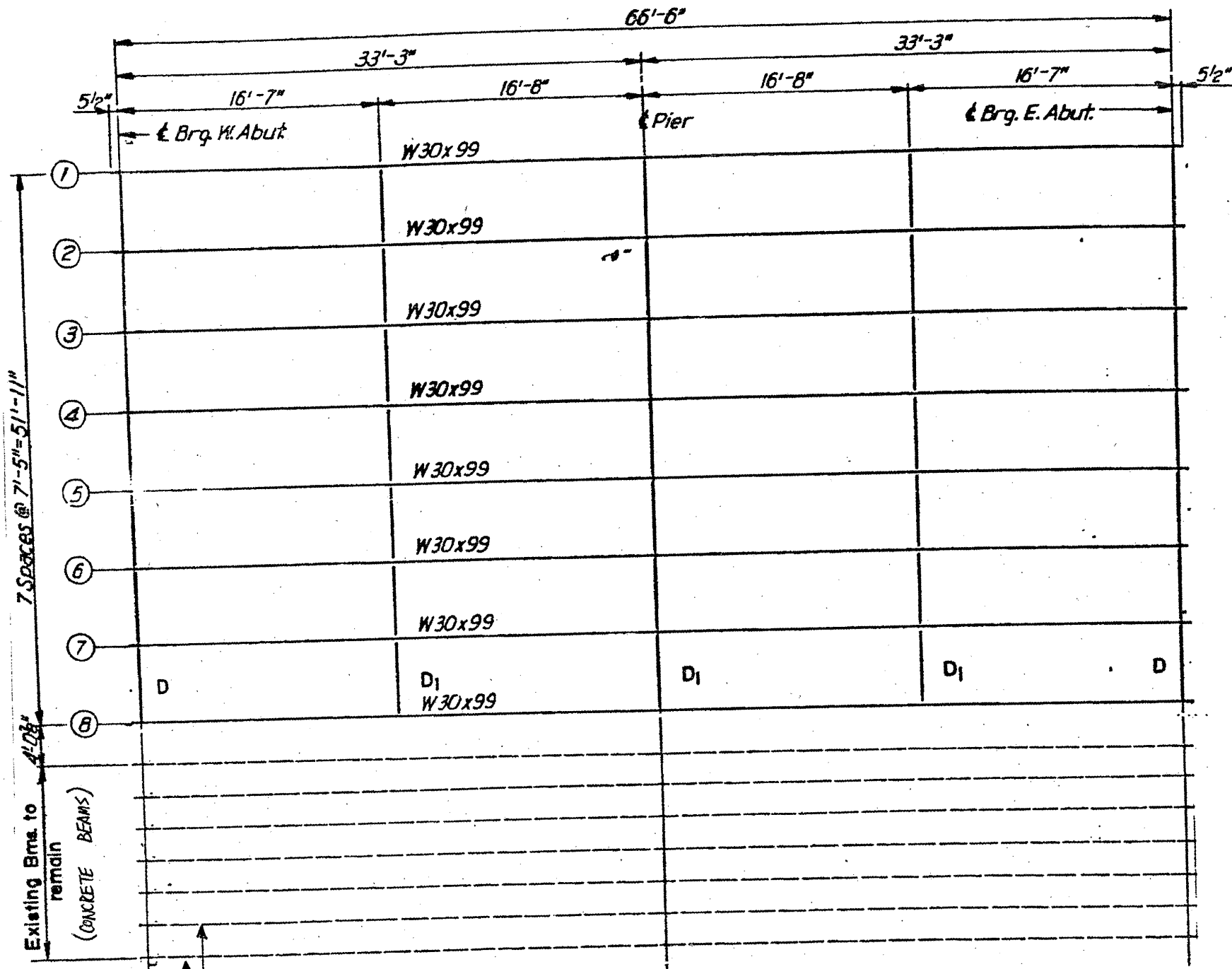


ROUTE	SECTION	COUNTY	TOTAL SHEETS	SHEET NUMBER
VARIOUS	2001-048-BP	COOK & LAKE	20	12

CONTRACT NO. 60P58



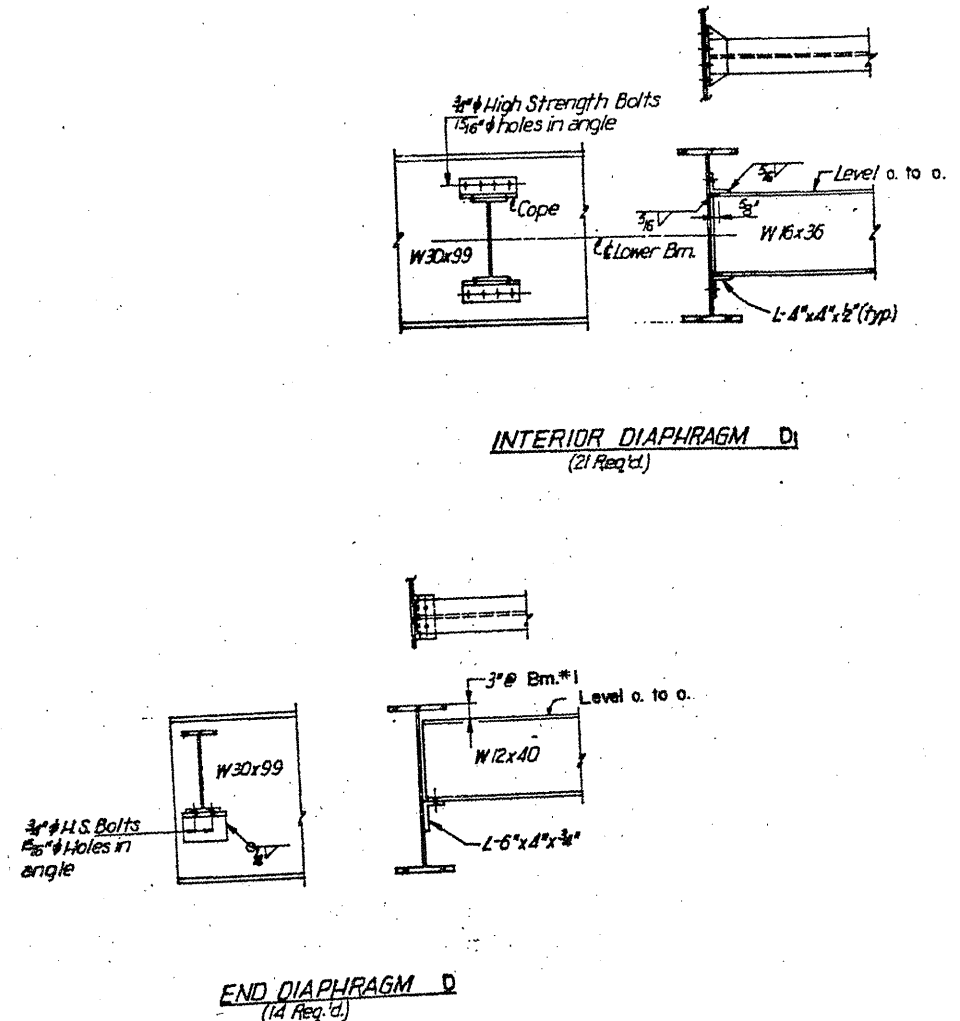
7 SPACES @ 7'-5" = 51'-11"

Existing Brms. to remain (CONCRETE BEAMS)

EXISTING PRECAST, PRESTRESSED CONCRETE BEAMS (TYP.)

PLAN

DIAPHRAGMS:
 D = W12x40
 D₁ = W16x36



FOR INFORMATION ONLY

ILLINOIS DEPARTMENT OF TRANSPORTATION
 EXISTING BRIDGE PLAN
 LOCATION 2: SN 016-0928
 US 14 (Caldwell Ave) over N. Branch of Chicago River