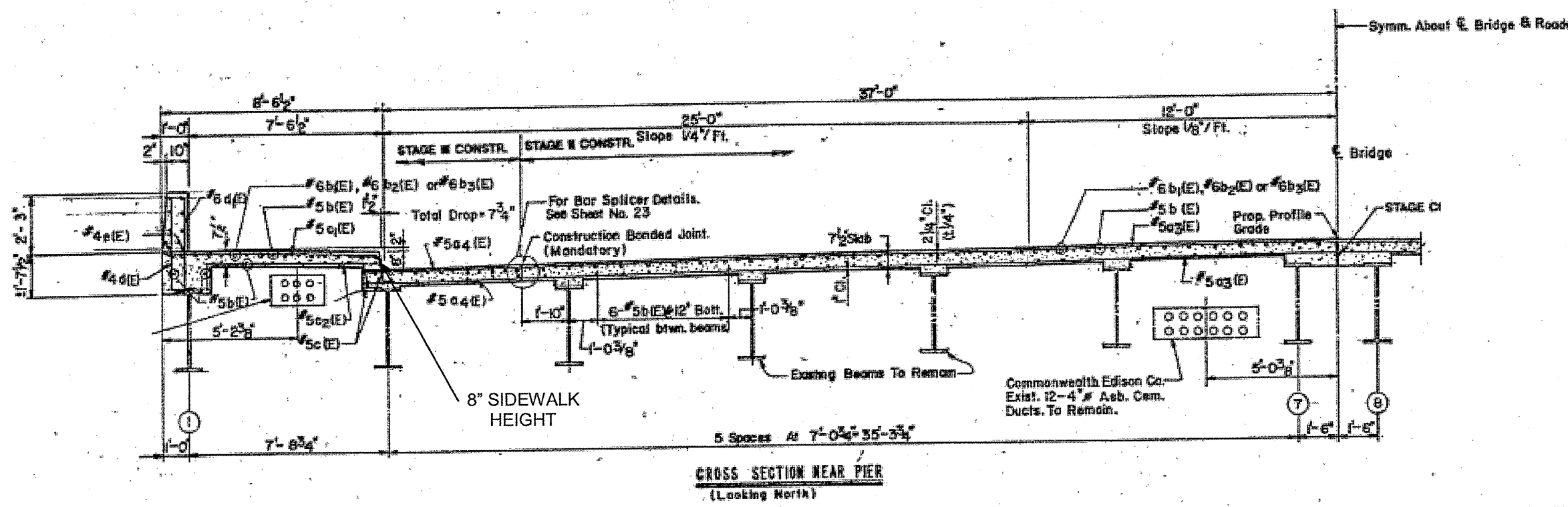
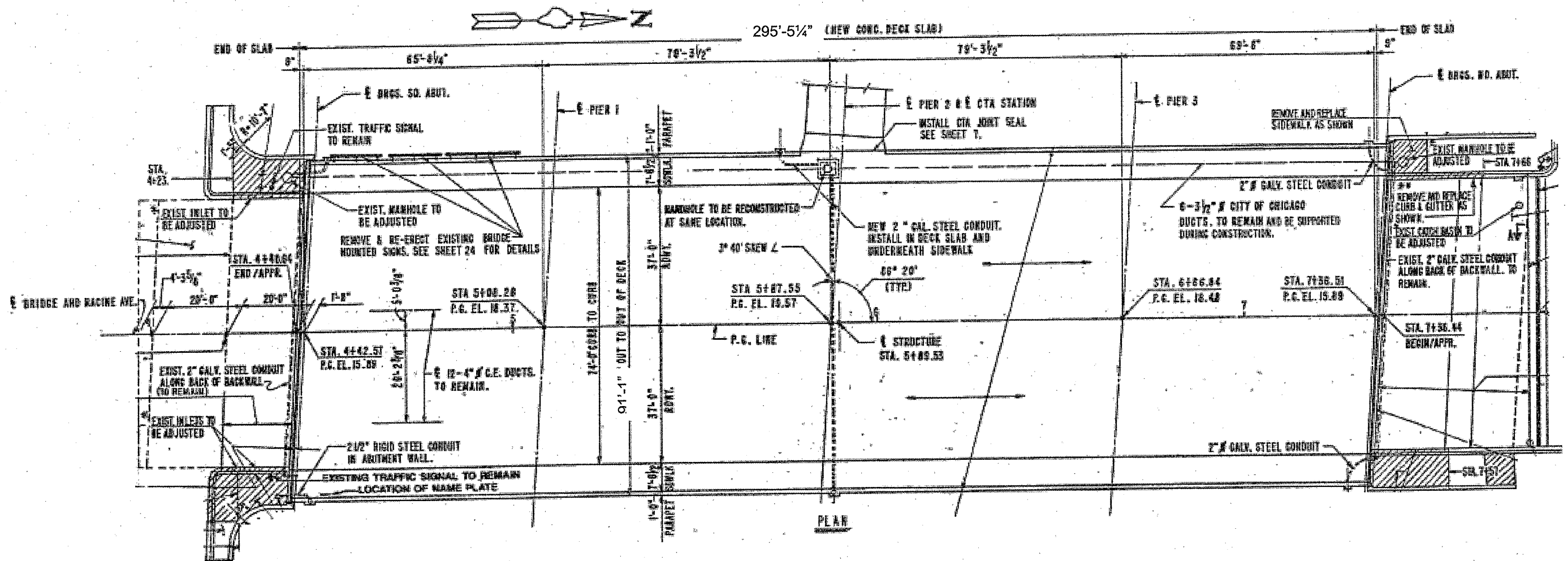


ROUTE VARIOUS	SECTION 2011-051-I	COUNTY COOK & DUPAGE	TOTAL SHEETS 72	SHEET NUMBER 46
------------------	-----------------------	-------------------------	--------------------	--------------------

CONTRACT NO. 60P61



FOR INFORMATION ONLY

ILLINOIS DEPARTMENT OF TRANSPORTATION

EXISTING PLAN & CROSS SECTION LOCATION 31 (SN 016-2115) RACINE AVE OVER I-290 IKE & CTA SHEET 1 OF 1