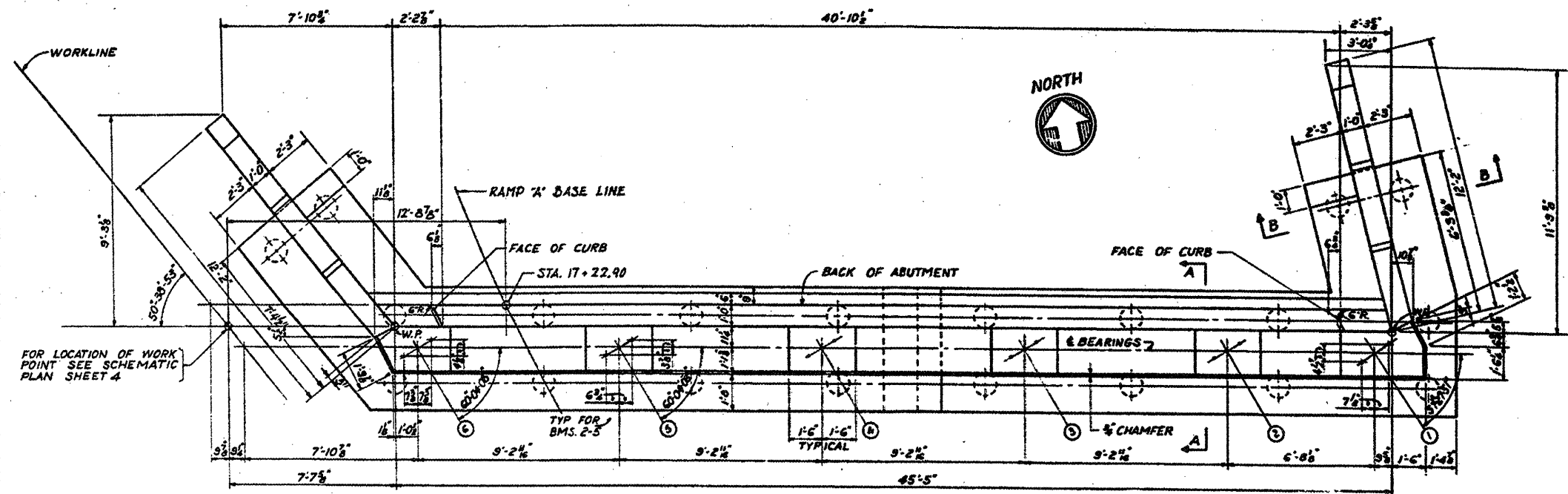
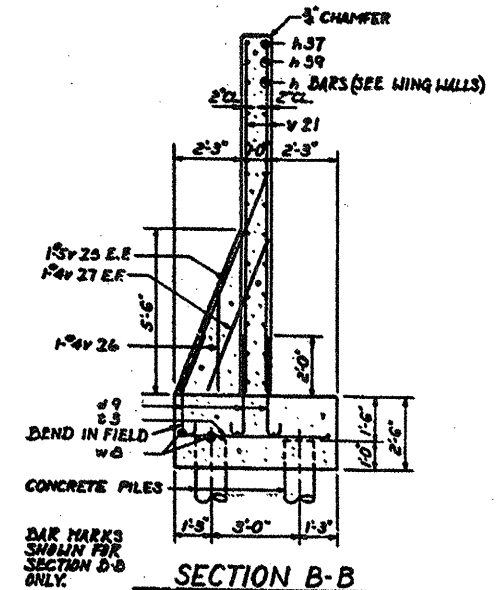


ROUTE	SECTION	COUNTY	TOTAL SHEETS	SHEET NUMBER
FAI 290	2011-061-BR	COOK & DUPAGE	29	10

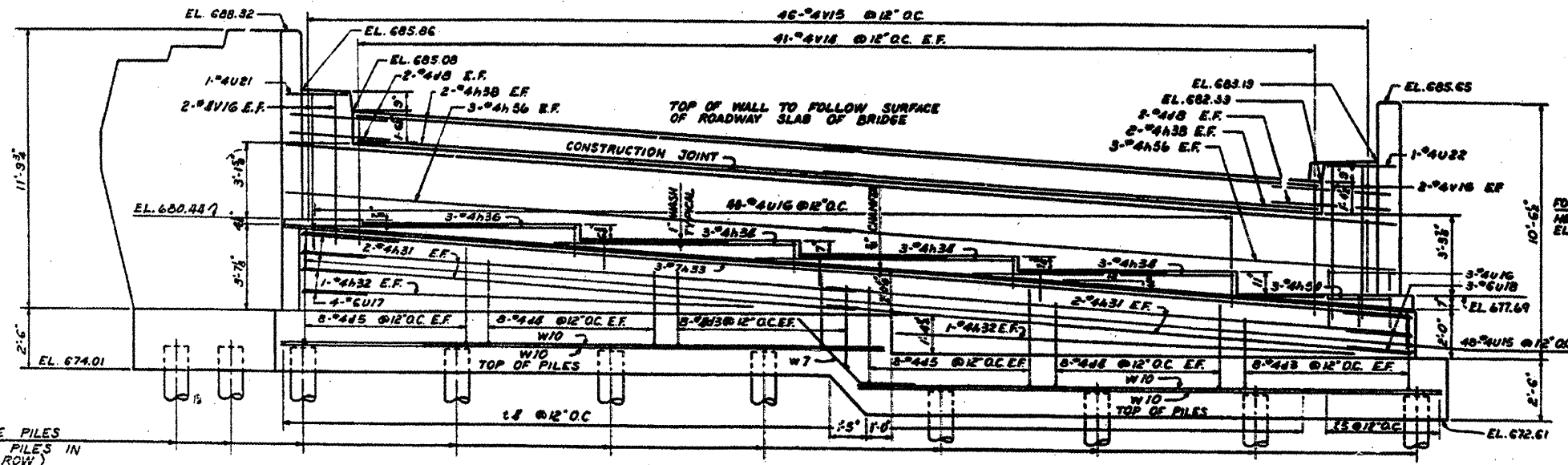
Contract 60P79



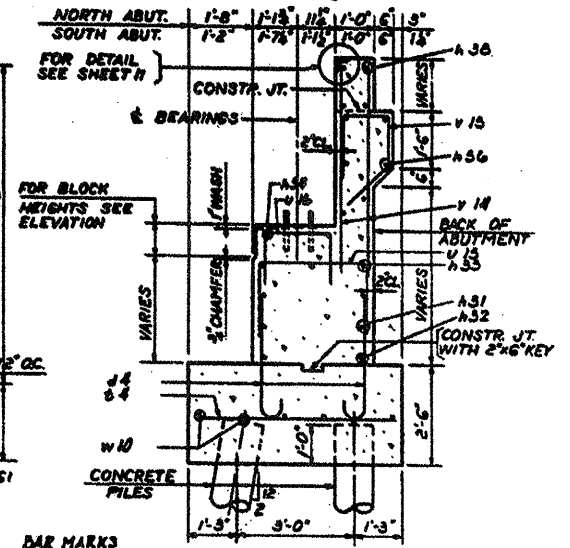
**PLAN**  
SCALE: 1/8"=1'-0"



**SECTION B-B**  
SECTION D-D SIMILAR  
SCALE: 1/8"=1'-0"



**ELEVATION**  
SCALE: 1/8"=1'-0"



**SECTION A-A**  
SECTION C-C SIMILAR  
SCALE: 1/8"=1'-0"

**NOTES:**  
ADJUST SPACING OF REINFORCEMENT TO AVOID INTERFERENCE WITH DRILLING OF HOLES FOR ANCHOR BOLTS.  
PEDESTAL STEPS TO BE POURED MONOLITICALLY WITH BRIDGE SEAT.  
WALL ABOVE CONSTR. JOINT TO BE POURED AFTER SUPERSTRUCTURE SLAB IS IN PLACE.  
FOR FOOTING DIMENSIONS AND PILE LOCATIONS SEE FOOTING PLAN SHEETS.

**FOR INFORMATION ONLY**

SHEET 5 OF 10

ILLINOIS DEPARTMENT OF  
TRANSPORTATION  
SN 022-0015  
LOCATION NO. 1  
I-290 RAMP A-OVER IL 64 (NORTH AVE.)  
NORTH ABUTMENT