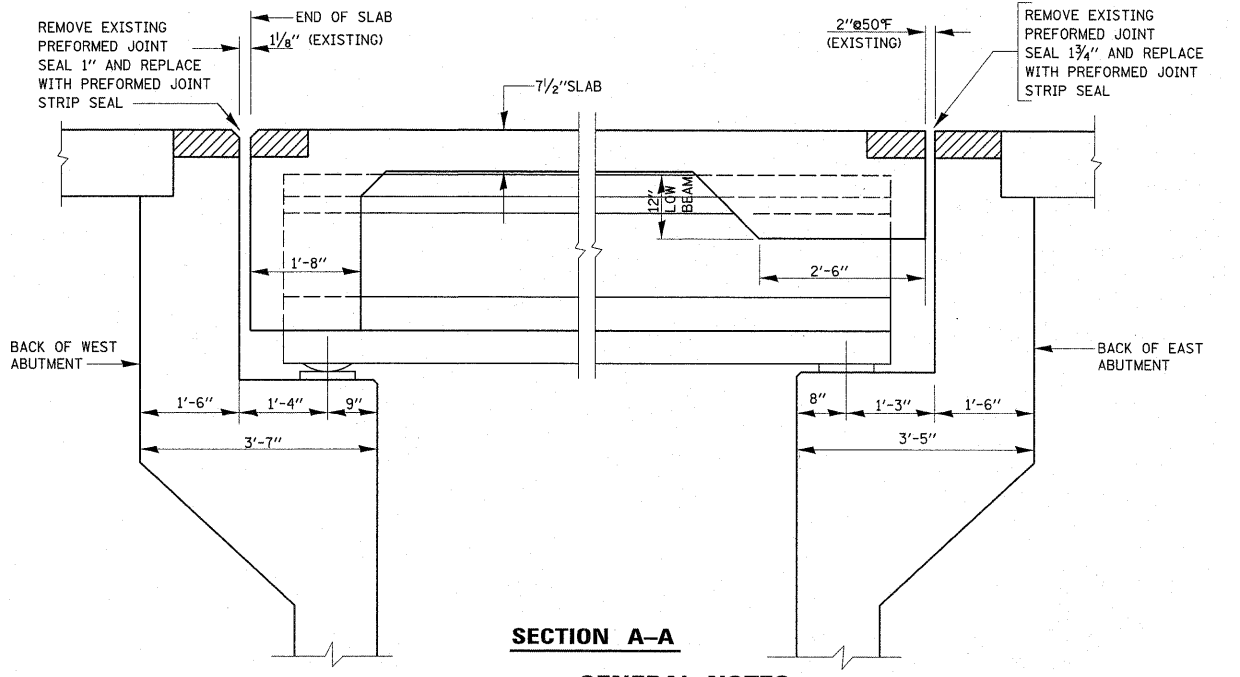


PLAN



SECTION A-A

TOTAL BILL OF MATERIALS

ITEM	UNIT	QUANTITY
REINFORCEMENT BARS (EPOXY COATED)	POUND	1050
CONCRETE REMOVAL	CU. YD.	6.6
CONCRETE SUPERSTRUCTURE	CU. YD.	6.3
PREFORMED JOINT STRIP SEAL	FOOT	199
CONCRETE BRIDGE DECK SCARIFICATION 3/8"	SQ. YD.	370
BRIDGE DECK THIN POLYMER OVERLAY 3/8"	SQ. YD.	370
STRUCTURAL REPAIR OF CONCRETE (DEPTH ≤ 5")	SQ. FT.	16
STRUCTURAL REPAIR OF CONCRETE (DEPTH ≥ 5")	SQ. FT.	14
PROTECTIVE COAT *	SQ. YD.	41
BAR SPLICERS	EACH	8
APPROACH SLAB REPAIR (PARTIAL DEPTH)	SQ. YD.	38
BRIDGE DECK CONCRETE CRACK SEALER	FOOT	114

* APPLY TO NEW CONCRETE ONLY AT JOINT LOCATIONS

GENERAL NOTES:

PLAN DIMENSIONS AND DETAILS RELATIVE TO EXISTING PLANS ARE SUBJECT TO NOMINAL CONSTRUCTION VARIATIONS. THE CONTRACTOR SHALL FIELD VERIFY EXISTING DIMENSIONS AND DETAILS AFFECTING NEW CONSTRUCTION AND MAKE NECESSARY APPROVED ADJUSTMENT PRIOR TO CONSTRUCTION OR ORDERING OF MATERIALS. SUCH VARIATIONS SHALL NOT BE CAUSE FOR ADDITIONAL COMPENSATION FOR A CHANGE IN SCOPE OF THE WORK, HOWEVER, THE CONTRACTOR WILL BE PAID FOR THE QUANTITY ACTUALLY FURNISHED BASED AT THE UNIT PRICE BID FOR THE WORK.

ALL STRUCTURAL STEEL SHALL CONFORM TO AASHTO CLASSIFICATION M-270 GR. 36, UNLESS OTHERWISE NOTED.

REINFORCEMENT BARS DESIGNATED (E) SHALL BE EPOXY COATED.

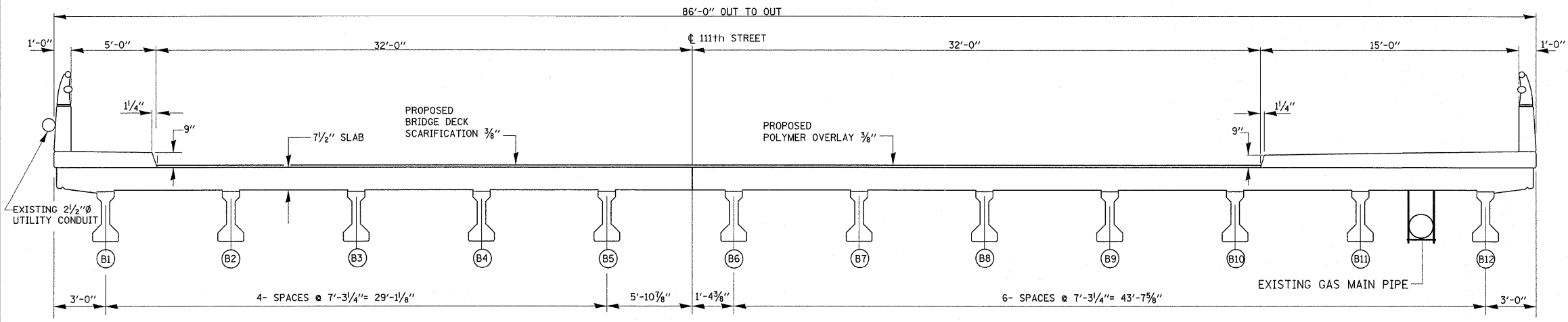
EXISTING REINFORCEMENT BARS EXTENDING INTO THE REMOVAL AREA SHALL BE CLEANED, STRAIGHTENED AND INCORPORATED INTO THE NEW CONSTRUCTION. ANY REINFORCEMENT BARS THAT ARE DAMAGED DURING CONCRETE REMOVAL SHALL BE REPLACED WITH AN APPROVED BAR SPLICER OR ANCHORAGE SYSTEM. COST INCLUDED WITH CONCRETE REMOVAL.

CONCRETE SUPERSTRUCTURE SHALL HAVE A SEVEN DAY MINIMUM CURE.

REINFORCEMENT BARS SHALL CONFORM TO THE REQUIREMENTS OF ASTM A 706 Gr 60. SEE SPECIAL PROVISIONS.

JOINT OPENINGS SHALL BE ADJUSTED ACCORDING TO ARTICLE 520.04 OF THE STANDARD SPECIFICATIONS. WHEN THE DECK IS POURED AT AN AMBIENT TEMPERATURE OTHER THAN 50° F.

NO IN-STREAM WORK ALLOWED



CROSS SECTION
(LOOKING EAST)



David Carl Puzey 10/14/11
Expires 11/30/12