




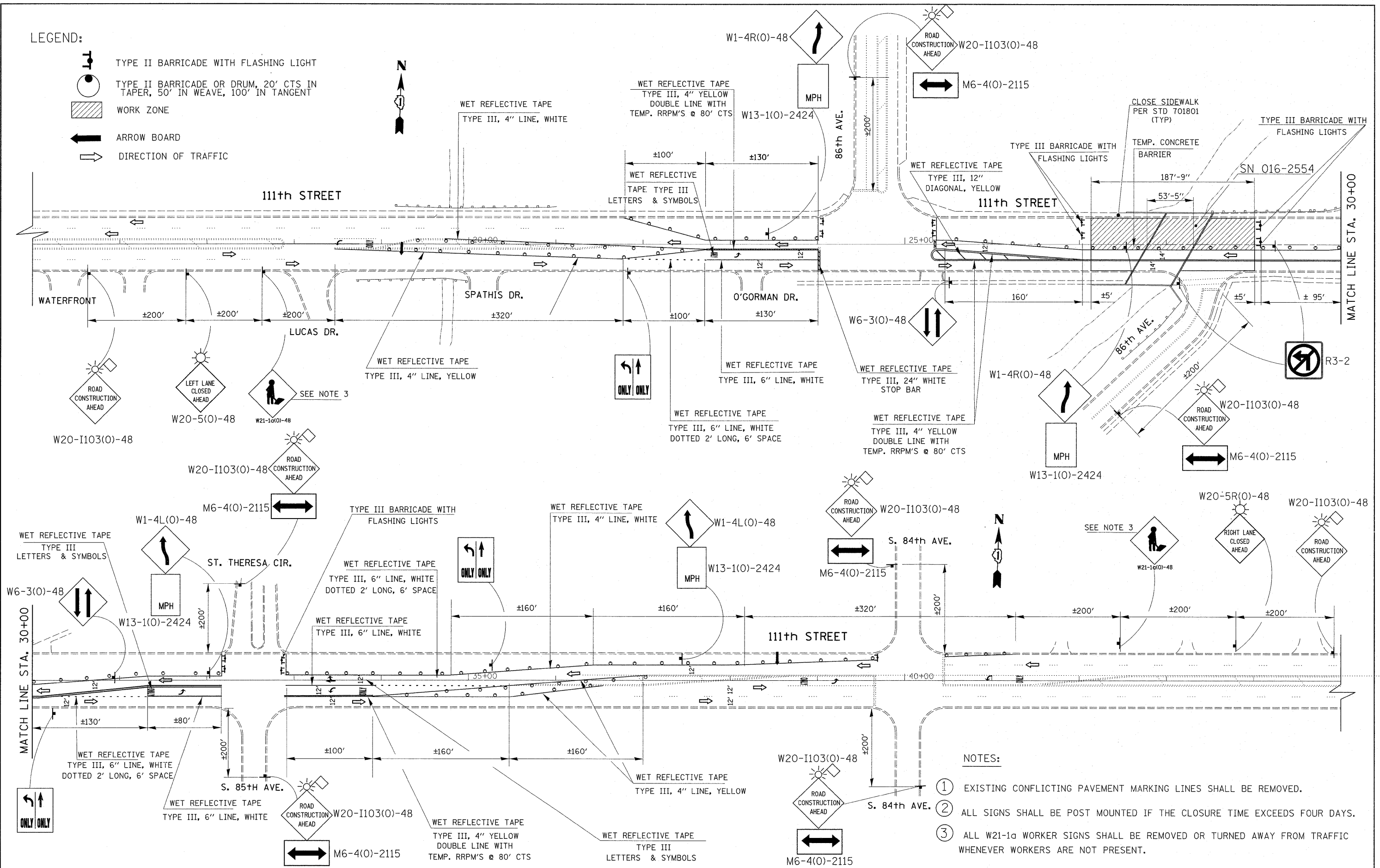


LEGEND:

-  TYPE II BARRICADE WITH FLASHING LIGHT
-  TYPE II BARRICADE OR DRUM, 20' CTS IN TAPER, 50' IN WEAVE, 100' IN TANGENT
-  WORK ZONE
-  ARROW BOARD
-  DIRECTION OF TRAFFIC



NOTES:

- ① EXISTING CONFLICTING PAVEMENT MARKING LINES SHALL BE REMOVED.
- ② ALL SIGNS SHALL BE POST MOUNTED IF THE CLOSURE TIME EXCEEDS FOUR DAYS.
- ③ ALL W21-1a WORKER SIGNS SHALL BE REMOVED OR TURNED AWAY FROM TRAFFIC WHENEVER WORKERS ARE NOT PRESENT.

FILE NAME =	USER NAME = gorengautab	DESIGNED -	REVISED -	STATE OF ILLINOIS DEPARTMENT OF TRANSPORTATION	111th ST OVER STONEY CREEK TRAFFIC CONTROL PLAN, STAGE II (S.N. 016-2554)			F.A.U. RTE.	SECTION	COUNTY	TOTAL SHEETS	SHEET NO.		
ca:\pw_work\puidot\gorengautab\d0273096\	D161711-sht-plan.dgn	DRAWN -	REVISED -		SCALE:	SHEET NO.	OF SHEETS	STA.	TO STA.	1581	I 355-B-I	COOK	23	13
	PLOT SCALE = 50.0000' / in.	CHECKED -	REVISED -											
	PLOT DATE = 12/11/2011	DATE -	REVISED -											
											CONTRACT NO. 60P80		ILLINOIS FED. AID PROJECT	