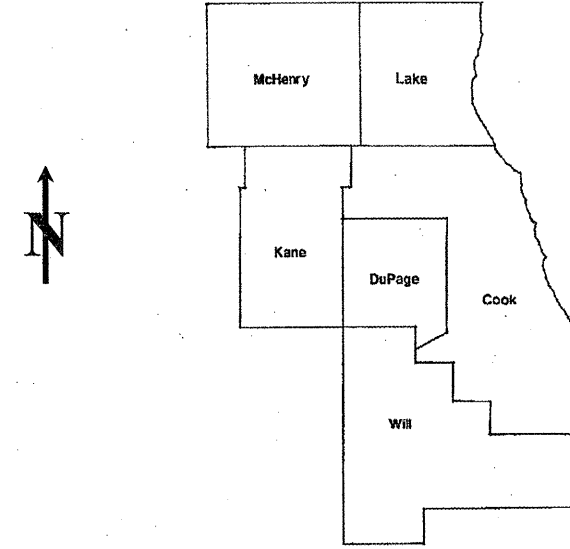


ROUTE	SECTION	COUNTY	TOTAL SHEETS	SHEET NUMBER
VARIOUS	2011-099-LS	VARIOUS	21	1

D-91-056-12  
CONTRACT 60R24

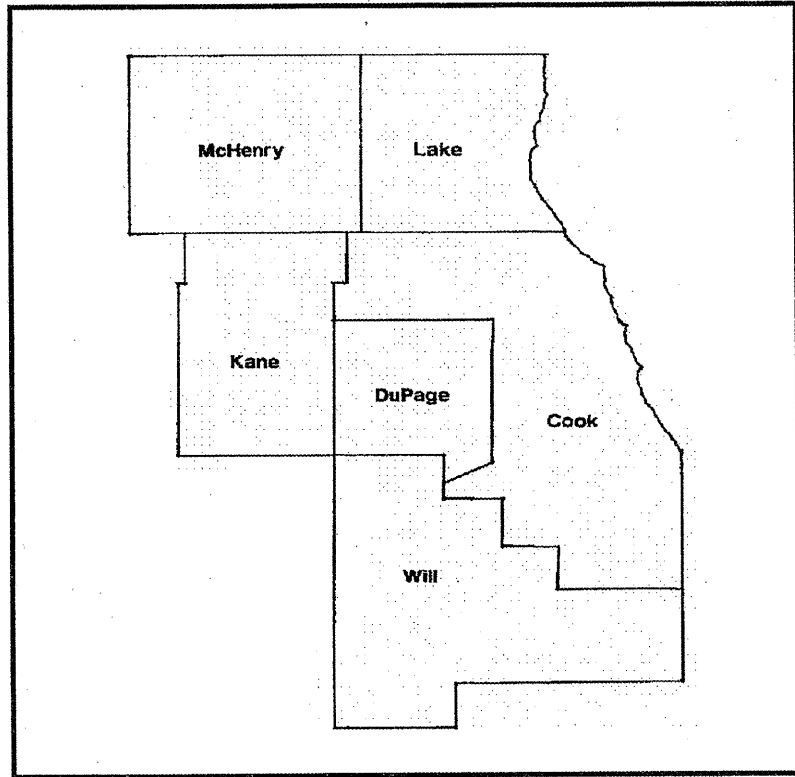
STATE OF ILLINOIS  
DEPARTMENT OF TRANSPORTATION  
DIVISION OF HIGHWAYS  
DISTRICT ONE  
**PROPOSED HIGHWAY PLANS**  
ROUTE: VARIOUS  
SECTION: 2011-099-LS  
EXPRESSWAY LANDSCAPE REPAIR & RENOVATION  
VARIOUS COUNTIES  
JOB NO.: C-91-056-12



LOCATION OF IMPROVEMENT INDICATED THUS:

FOR INDEX OF SHEETS SEE PAGE 2

IMPROVEMENTS ARE AT  
VARIOUS LOCATIONS WITHIN  
DISTRICT ONE



DISTRICT ONE BUREAU OF MAINTENANCE: J. STUMPNER  
MAINTENANCE LANDSCAPE DESIGNER: R. WANNER / M. DEL ROSARIO (847) 705-4171

CONTRACT 60R24

STATE OF ILLINOIS  
DEPARTMENT OF TRANSPORTATION  
DIVISION OF HIGHWAYS  
SUBMITTED: August 31, 2011  
Diana M. O'Keefe  
DEPUTY DIRECTOR OF HIGHWAYS, REGION ENGINEER  
October 14, 2011  
Scott E. Stett, P.E.  
acting ENGINEER OF DESIGN AND ENVIRONMENT  
October 14, 2011  
Christine M. Reeder  
DIRECTOR OF HIGHWAYS, CHIEF ENGINEER

PRINTED BY THE AUTHORITY  
OF THE STATE OF ILLINOIS

J.U.L.I.E.: JOINT UTILITY LOCATION  
INFORMATION FOR EXCAVATION  
(800) 892-0123

ROUTE	SECTION	COUNTY	TOTAL SHEETS	SHEET NUMBER
VARIOUS	2011-99-LS	VARIOUS	21	2

CONTRACT 60R24

**INDEX OF SHEETS**

- 1 TITLE SHEET
- 2 INDEX OF SHEETS, STATE STANDARDS AND GENERAL NOTES
- 3-4 SUMMARY OF QUANTITIES
- 5 CALENDAR OF CONSTRUCTION
- 6 LOCATION SUMMARY
- 7-19 LAYOUT PLAN SHEETS
- 20 TC 17 TRAFFIC CONTROL DETAILS FOR FREEWAY SHOULDER CLOSURES PARTIAL RAMP CLOSURES

**STATE STANDARDS**

- 701001-02 701006-03
- 701101-02 701106-02
- 701901-01

**GENERAL NOTES**

FOR ARTERIALS THE CONTRACTOR SHALL CONTACT THE DISTRICT ONE TRAFFIC CONTROL SUPERVISOR AT (847) 705-4470 A MINIMUM OF 72 HOURS IN ADVANCE OF BEGINNING WORK.

BEFORE STARTING ANY EXCAVATION THE CONTRACTOR SHALL CALL THE STATE ELECTRICAL MAINTENANCE CONTRACTOR AT (773) 287-7600, EXTENSION 601, FOR FIELD LOCATIONS OF BURIED CABLE.

THE CONTRACTOR SHALL ADHERE TO LIMITS OF RESTORATION SHOWN. AREAS OUTSIDE THESE LIMITS THAT ARE DAMAGED OR DISTURBED BY THE CONTRACTOR, SHALL BE RESTORED AT THE CONTRACTOR'S OWN EXPENSE. NO ADDITIONAL COMPENSATION WILL BE ALLOWED.

**ILLINOIS DEPARTMENT OF TRANSPORTATION**

LANDSCAPE REPAIR  
INDEX OF SHEETS  
GENERAL NOTES  
STATE STANDARDS

ROUTE	SECTION	COUNTY	TOTAL SHEETS	SHEET NUMBER
VARIOUS	2011-99-LS	VARIOUS	21	3

PAY ITEM	DESCRIPTION	UNIT	100% STATE URBAN TOTAL	0031	0031
				MCHD FUND (07MO)	CONTRACT MAINT FUND
21101601	TOPSOIL FURNISH AND PLACE, 1"	SQ YD	255	0	255
21101615	TOPSOIL FURNISH AND PLACE, 4"	SQ YD	6050	1210	4840
21101685	TOPSOIL FURNISH AND PLACE, 24"	SQ YD	170	0	170
25000210	SEEDING, CLASS 2A	ACRE	1.25	0.25	1.00
25000400	NITROGEN FERTILIZER NUTRIENT	POUND	112.5	22.5	90
25000500	PHOSPHORUS FERTILIZER NUTRIENT	POUND	112.5	22.5	90
25000600	POTASSIUM FERTILIZER NUTREINT	POUND	112.5	22.5	90
25000750	MOWING	ACRE	2	0	2
25100630	EROSION CONTROL BLANKET	SQ YD	6050	1210	4840
25200110	SODDING, SALT TOLERANT	SQ YD	250	0	250
25200200	SUPPLEMENTAL WATERING	UNIT	25	0	25
28000250	TEMPORARY EROSION CONTROL SEEDING	POUND	0.60	0	0.60
A2000116	TREE, ACER X FREEMANII AUTUMN BLAZE (AUTUMN BLAZE FREEMAN MAPLE), 2" CALIPER, BALLED AND BURLAPPED	EACH	1	0	1
A2002370	TREE, BETULA NIGRA (RIVER BIRCH), 8' HEIGHT, CLUMP FORM, BALLED AND BURLAPPED	EACH	1	0	1
A2002816	TREE, CATALPA SPECIOSA (NORTHERN CATALPA), 2" CALIPER, BALLED AND BURLAPPED	EACH	3	0	3
A2002916	TREE, CELTIS OCCIDENTALIS (COMMON HACKBERRY), 2" CALIPER, BALLED AND BURLAPPED	EACH	12	1	11
A2004720	TREE, GLEDITSIA TRIACANTHOS INERMIS SHADEMASTER (SHADEMASTER THORNLESS COMMON HONEYLOCUST), 2-1/2" CALIPER, BALLED AND BURLAPPED	EACH	10	2	8
A2005020	TREE, GYMNOCLADUS DIOICUS (KENTUCKY COFFEETREE), 2-1/2" CALIPER, BALLED AND BURLAPPED	EACH	26	2	24
A2006514	TREE, QUERCUS BICOLOR (SWAMP WHITE OAK), 1-3/4" CALIPER, BALLED AND BURLAPPED	EACH	3	0	3
A2006714	TREE, QUERCUS MACROCARPA (BUR OAK), 1-3/4" CALIPER, BALLED AND BURLAPPED	EACH	3	0	3
A2008468	TREE, ULMUS AMERICANA PRINCETON (PRINCETON AMERICAN ELM), 2" CALIPER, BALLED AND BURLAPPED	EACH	2	0	2
B2001614	TREE, CRATAEGUS CRUSGALLI INERMIS (THORNLESS COCKSPUR HAWTHORN), 1-3/4" CALIPER, TREE FORM, BALLED AND BURLAPPED	EACH	5	5	0

(07MO)

CONTRACT 60R24

ILLINOIS DEPARTMENT OF TRANSPORTATION

SUMMARY OF QUANTITIES

ROUTE	SECTION	COUNTY	TOTAL SHEETS	SHEET NUMBER
VARIOUS	2011-99-LS	VARIOUS	21	4

PAY ITEM	DESCRIPTION	UNIT	100% STATE URBAN TOTAL	0031	0031
				MCHD FUND	CONTRACT MAINT FUND
B2006216	TREE, SYRINGA RETICULATA (JAPANESE TREE LILAC), 2" CALIPER, TREE FORM, BALLED AND BURLAPPED	EACH	21	5	16
C20058G5	SHRUB, RHUS AROMATICA GRO-LOW (GRO-LOW FRAGRANT SUMAC), 5-GALLON	EACH	25	0	25
C2C11736	SHRUB, VIBURNUM DENTATUM (ARROWWOOD VIBURNUM), 3' HEIGHT, CONTAINER	EACH	25	0	25
C3005924	SHRUB, RHUS GLABRA (SMOOTH SUMAC), 2' HEIGHT, BARE ROOT	EACH	75	0	75
D2001960	EVERGREEN, PICEA GLAUCA DENSATA (BLACK HILLS SPRUCE), 5' HEIGHT, BALLED AND BURLAPPED	EACH	2	0	2
D2002160	EVERGREEN, PICEA PUNGENS (COLORADO SPRUCE), 5' HEIGHT, BALLED AND BURLAPPED	EACH	6	6	0
D2002460	EVERGREEN, PINUS FLEXILIS VANDERWOLF'S PYRAMID (VANDERWOLF'S PYRAMID LIMBER PINE), 5' HEIGHT, BALLED AND BURLAPPED	EACH	2	0	2
E20210G1	VINE-PARTHENOCISSUS QUINQUEFOLIA ENGELMANNII (ENGMANNII VIRGINIA CREEPER), 1-GALLON POT	EACH	30	0	30
K0012970	PERENNIAL PLANTS, BULB TYPE	UNIT	1	0	1
K0012990	PERENNIAL PLANTS, ORNAMENTAL TYPE, GALLON POT	UNIT	2.75	0	2.75
K0026850	PERENNIAL PLANT CARE	SQ YD	2160	0	2160
K0029632	WEED CONTROL, NON-SELECTIVE AND NON-RESIDUAL	GALLON	5	0	5
X2500500	INTERSEEDING, CLASS 4 (SPECIAL)	ACRE	2	0	2
X2503321	INTERSEEDING, CLASS 5 (MODIFIED)	ACRE	2	0	2

CONTRACT 60R24

ILLINOIS DEPARTMENT OF TRANSPORTATION  
SUMMARY OF QUANTITIES

<b>ROUTE</b> VARIOUS	<b>SECTION</b> 2011-099-LS	<b>COUNTY</b> VARIOUS	<b>TOTAL SHEETS</b> 24	<b>SHEET NUMBER</b> 5
-------------------------	-------------------------------	--------------------------	---------------------------	--------------------------

CONTRACT 60R24

### Calendar of Construction

Phases	Phase I		Phase II		Phase III		Phase IV		Phase V		Phase VI		Phase VII	
Item	December	January	February	March	April	May	June	July	August	September	October	November	December	
<b>Plant Material</b>														
Submit completed plant inspection forms to IDOT by Jan 31 for spring planting season & July 31 for fall planting season														
<b>Seeding</b>														
Seeding, Class 2A Spring: March 15 - June 1 Fall: Aug 1 - Sept 15 Dormant: Nov 1 - March 15														
Seeding, Class 5 (Modified) Dormant: November 1 - March 15														
Seeding, Class 4A (Modified) Dormant: Nov 1 - March 15														
Mowing: Mow area to be interseeded to a maximum height of 3"														
Weed Control, Non-Selective, Non-Residual: spray area to be interseeded														
Interseeding, Class 4 & 4A (Modified) Dormant: Nov 1 - March 15														
Interseeding, Class 5 (Modified) Dormant: Nov 1 - March 15														
<b>Perennial Bed Preparation</b>														
Turf Removal (Round-up or sod cutting) Round-Up: 2 weeks prior to planting														
<b>Perennial Plants</b>														
Woodland Type Plants: April 1 - May 15														
Ornamental Herbaceous, Prairie, Wetland Emergent & Sedge Meadow Plants: May 1 - June 15 or Aug 15 - Sept 15														
Bulbs: Oct 15 - Nov 30														
<b>Tree / Shrub / Vine Planting</b>														
Spring plantings of balled and burlapped & container stock: March 15 - May 15														
Seedlings, broadleaf evergreens, vines & willow, poplar, oak, alder, birch, hawthorn, red maple, cherry & pear only in spring: March 15 - May 15														
Evergreens (spring): March 15 - April 30														
Fall planting of balled and burlapped: Oct 15 - Nov 30														
Evergreens (fall): August 15 - Oct 15														
<b>Plant Care</b>														
Plant Care: April 15 - April 30 & May 15 - May 30														
Mulch Placement: May 15 - June 15														
Supplemental Watering: as determined by the RE during May 15 - Sept 15														

ILLINOIS DEPARTMENT OF TRANSPORTATION  
CALENDAR OF CONSTRUCTION

ROUTE	SECTION	COUNTY	TOTAL SHEETS	SHEET NUMBER
VARIOUS	2011-099-LS	VARIOUS	21	6

CONTRACT 60R24

**LOCATION SUMMARY**

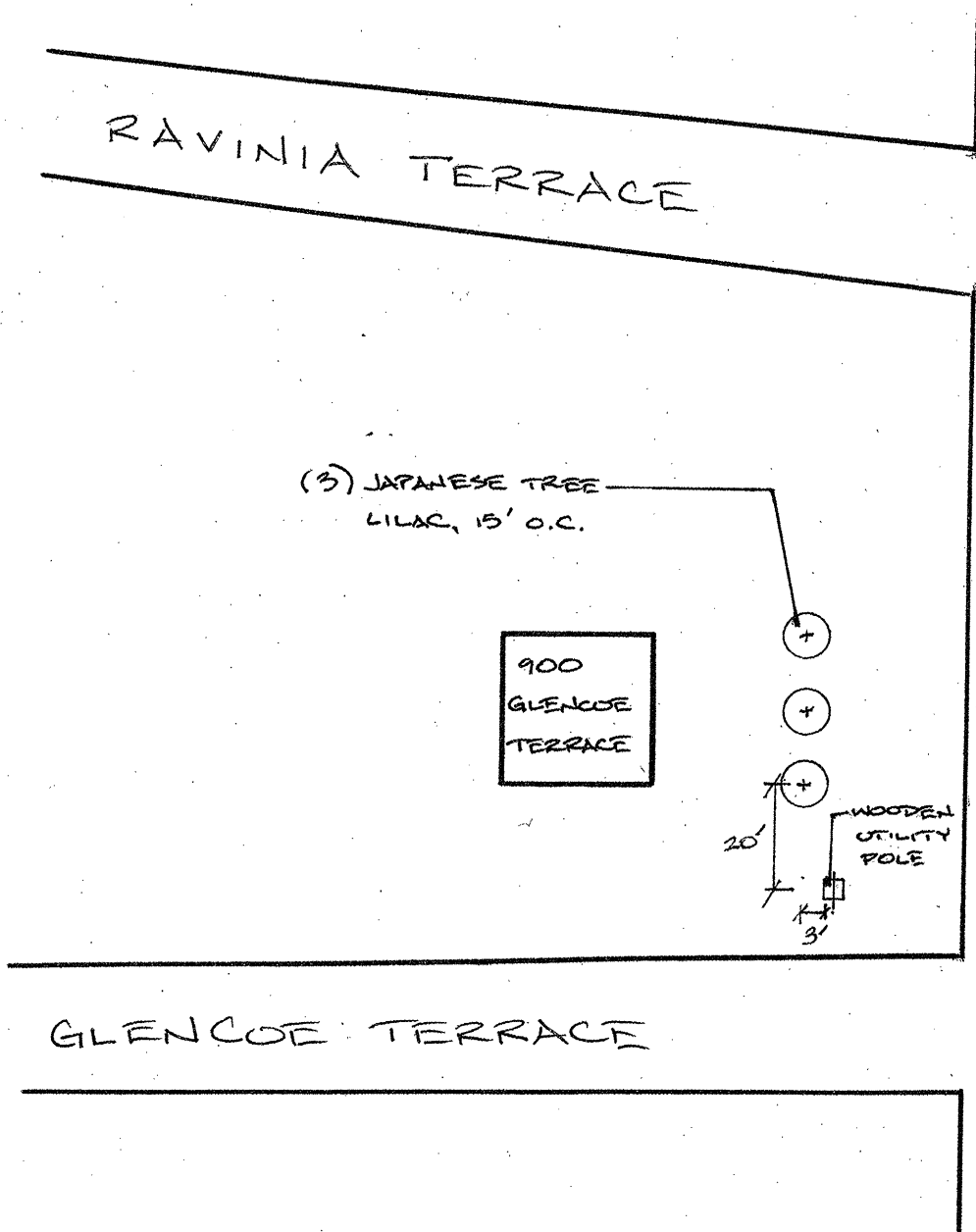
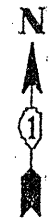
COUNTY	CITY/TOWN	CLAIM #	SHEET #	GENERAL LOCATION
LAKE	LAKE ZURICH	N/A	7	US 12 SOUTH OF N. OLD RAND ROAD
COOK	CHICAGO	N/A	8	I-90 E (KENNEDY EXPY) AT HARLEM AVE. EXIT RAMP
COOK	CHICAGO	N/A	9	I-90 W (KENNEDY EXPY) WEST OF HARLEM AVE.
COOK	CHICAGO	767492	10	I-90 W (KENNEDY EXPY) EAST OF SAYRE AVE.
COOK	CHICAGO	767490	11	NORTHBOUND I-90/94 (DAN RYAN EXPY), N/O 47 <sup>TH</sup> ST. TO S/O 43 <sup>RD</sup> ST
COOK	BRIDGEVIEW	N/A	12-13	IL 43 (HARLEM AVE.) N/O 71 <sup>ST</sup> ST. TO RR BRIDGE
COOK	POSEN	767491	14	I-57 EXIT AT SIBLEY (ACCIDENT INVESTIGATION SITE)
COOK	LANSING	N/A	15	I-80 / 94 / US 6 AT WENTWORTH
COOK	MARKHAM	N/A	16-17	I-57 IDOT MAINTENANCE YARD, 16010 S. CRAWFORD AVE.
DUPAGE	CAROL STREAM	N/A	18-19	IL 64 BETWEEN FAIR OAKS RD. AND PRESIDENT ST.
WILL	CREST HILL	N/A	20	IL 7 (THEODORE ST.) AT BARTHELONE AVE.

ILLINOIS DEPARTMENT OF TRANSPORTATION

LOCATION SUMMARY

ROUTE	SECTION	COUNTY	TOTAL SHEETS	SHEET NUMBER
VARIOUS	2011-099-LS	VARIOUS	21	7

CONTRACT 60R24



US RTE 12 RAND RD

N. OLD RAND RD

GENERAL LOCATION MAP

COUNTY: LAKE  
CLAIM: N/A

CITY/TOWN: LAKE ZURICH

**SCHEDULE OF LANDSCAPE ITEMS**

DESCRIPTION	QTY/UNIT
<b>SYRINGA RETICULATA</b>	
JAPANESE TREE LILAC	3 EACH

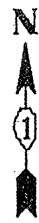
DRAWN NOT TO SCALE

ILLINOIS DEPARTMENT OF TRANSPORTATION  
LANDSCAPE REPAIR LOCATION AND  
LAYOUT PLAN



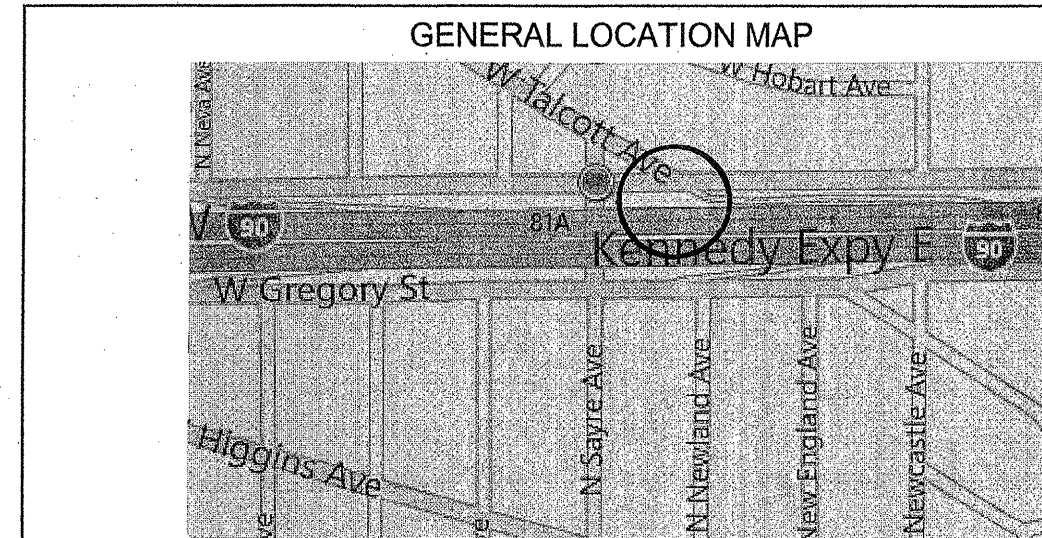
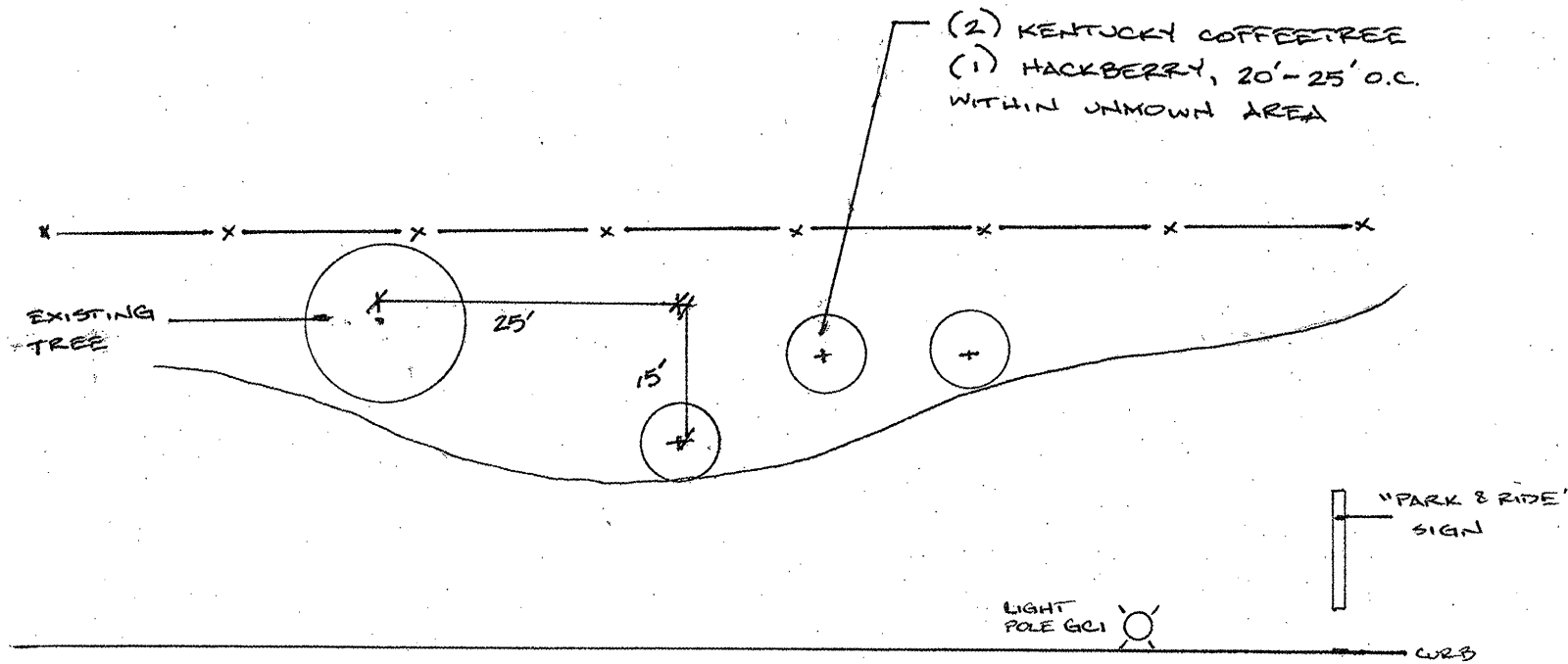






ROUTE	SECTION	COUNTY	TOTAL SHEETS	SHEET NUMBER
VARIOUS	2011-099-LS	VARIOUS	21	10

CONTRACT 60R24



COUNTY: COOK  
CLAIM: 767492

CITY/TOWN: CHICAGO

← I-90 WEST

**SCHEDULE OF LANDSCAPE ITEMS**

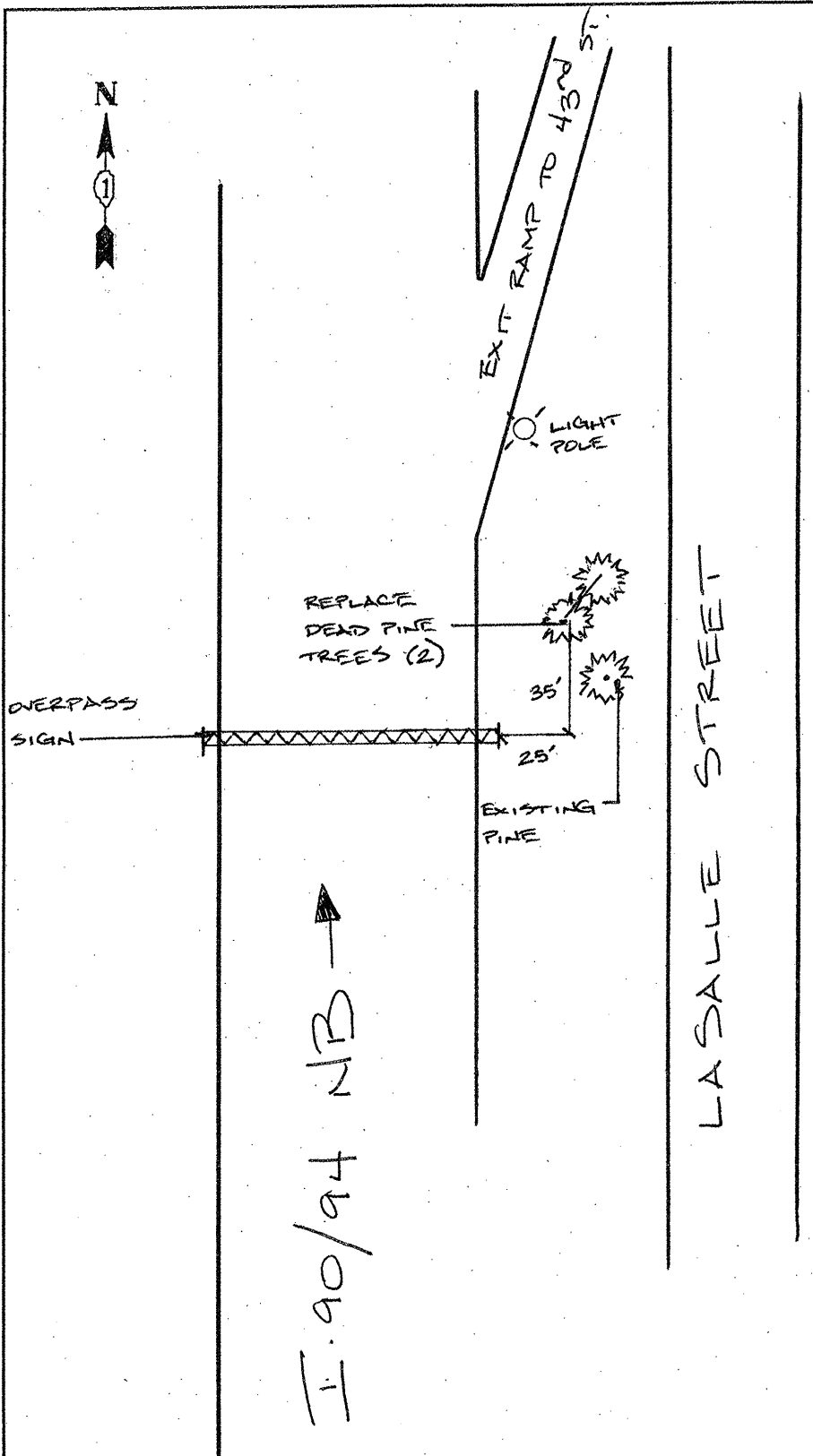
DESCRIPTION	QTY/UNIT
<b>CELTIS OCCIDENTALIS</b> COMMON HACKBERRY	1 EACH
<b>GYMNOCLADUS DIOICUS</b> KENTUCKY COFFEETREE	2 EACH

DRAWN NOT TO SCALE

ILLINOIS DEPARTMENT OF TRANSPORTATION  
LANDSCAPE REPAIR LOCATION AND  
LAYOUT PLAN

ROUTE	SECTION	COUNTY	TOTAL SHEETS	SHEET NUMBER
VARIOUS	2011-099-LS	VARIOUS	21	11

CONTRACT 60R24



**GENERAL LOCATION MAP**

COUNTY: COOK  
CLAIM: 767490

CITY/TOWN: CHICAGO

**SCHEDULE OF LANDSCAPE ITEMS**

DESCRIPTION	QTY/UNIT
<b>PICEA GLAUCA 'DENSATA'</b> BLACK HILLS SPRUCE	2 EACH

DRAWN NOT TO SCALE

ILLINOIS DEPARTMENT OF TRANSPORTATION  
LANDSCAPE REPAIR LOCATION AND  
LAYOUT PLAN

ROUTE	SECTION	COUNTY	TOTAL SHEETS	SHEET NUMBER
VARIOUS	2011-099-LS	VARIOUS	21	12

CONTRACT 60R24

SCHEDULE OF LANDSCAPE ITEMS

DESCRIPTION	QTY/UNIT
<b>BETULA NIGRA</b> RIVER BIRCH	1 EACH
<b>SYRINGA RETICULATA</b> JAPANESE TREE LILAC	3 EACH
<b>PINUS FLEXILIS 'VANDERWOLF'S PYRAMID'</b> VANDERWOLF'S PYRAMID LIMBER PINE	2 EACH
<b>PLANT CARE</b>	2160 SQ YD

**GENERAL LOCATION MAP**

COUNTY: COOK  
CLAIM: N/A

CITY/TOWN: BRIDGEVIEW

PLAN IS SHOWN ON NEXT SHEET.

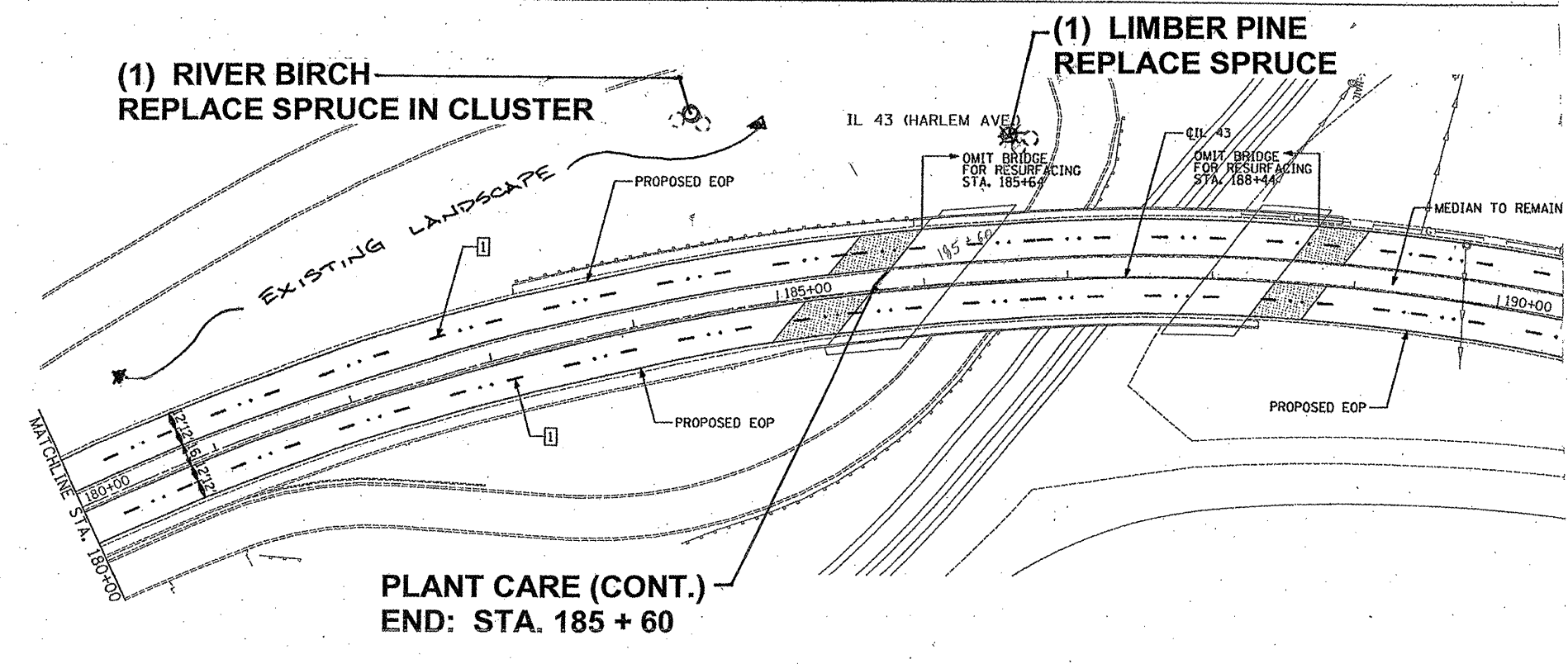
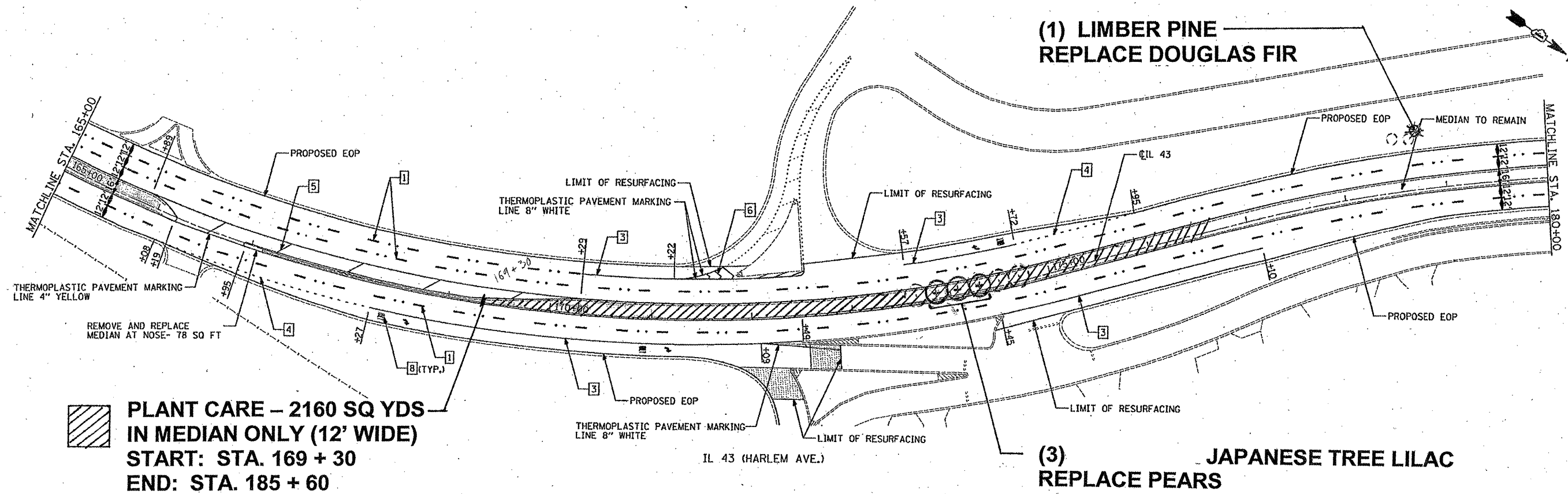
PLEASE CONTACT THE ROADSIDE DEVELOPMENT UNIT AT (847) 705-4171 AT LEAST 72 HOURS IN ADVANCE OF PLANTING TO CONFIRM LAYOUT.

ILLINOIS DEPARTMENT OF TRANSPORTATION

LANDSCAPE REPAIR LOCATION AND LAYOUT PLAN

ROUTE	SECTION	COUNTY	TOTAL SHEETS	SHEET NUMBER
VARIOUS	2011-099-LS	VARIOUS	21	13

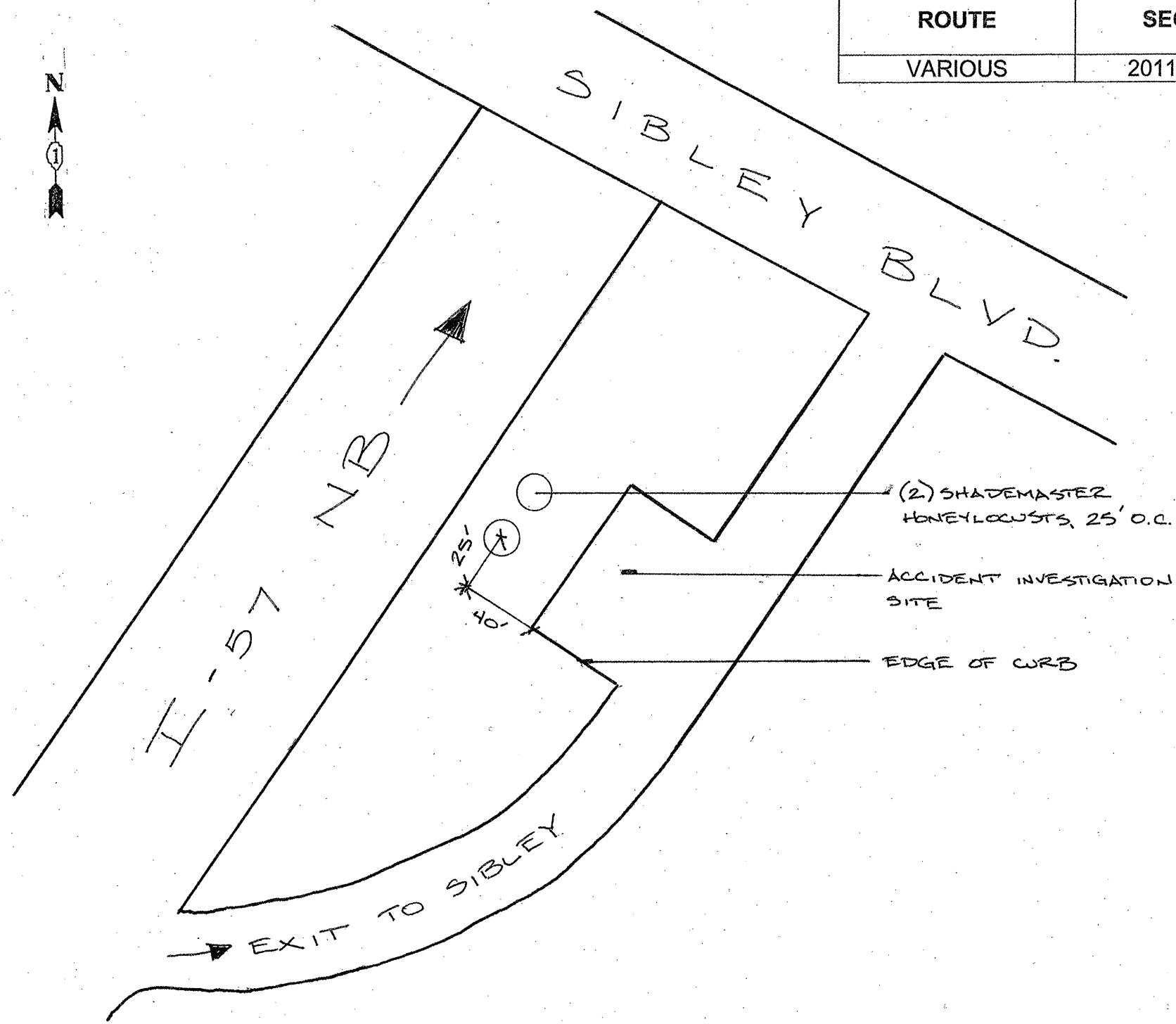
CONTRACT 60R24



ILLINOIS DEPARTMENT OF TRANSPORTATION  
LANDSCAPE REPAIR LOCATION AND  
LAYOUT PLAN

ROUTE	SECTION	COUNTY	TOTAL SHEETS	SHEET NUMBER
VARIOUS	2011-099-LS	VARIOUS	21	14

CONTRACT 60R24



GENERAL LOCATION MAP

COUNTY: COOK  
CLAIM: 767491

CITY/TOWN: POSEN

SCHEDULE OF LANDSCAPE ITEMS

DESCRIPTION	QTY/UNIT
<b>GLEDITSIA TRIACANTHOS VAR. INERMIS 'SHADEMASTER'</b> SHADEMASTER HONEYLOCUST	2 EACH

DRAWN NOT TO SCALE

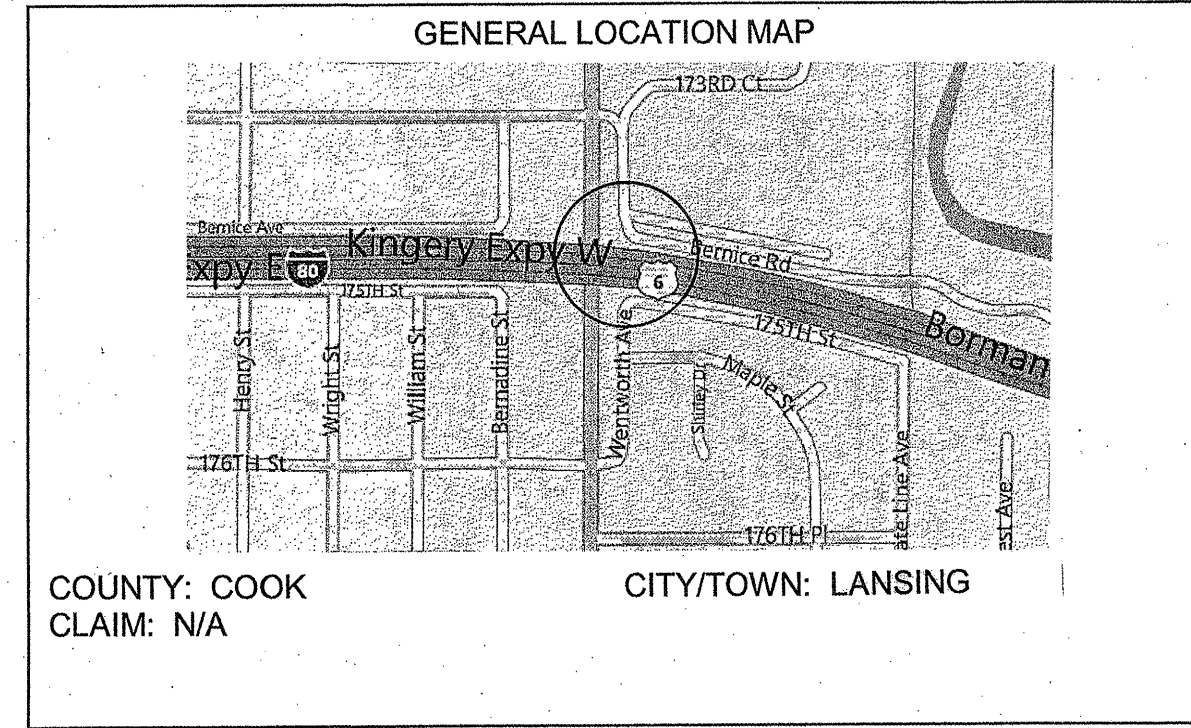
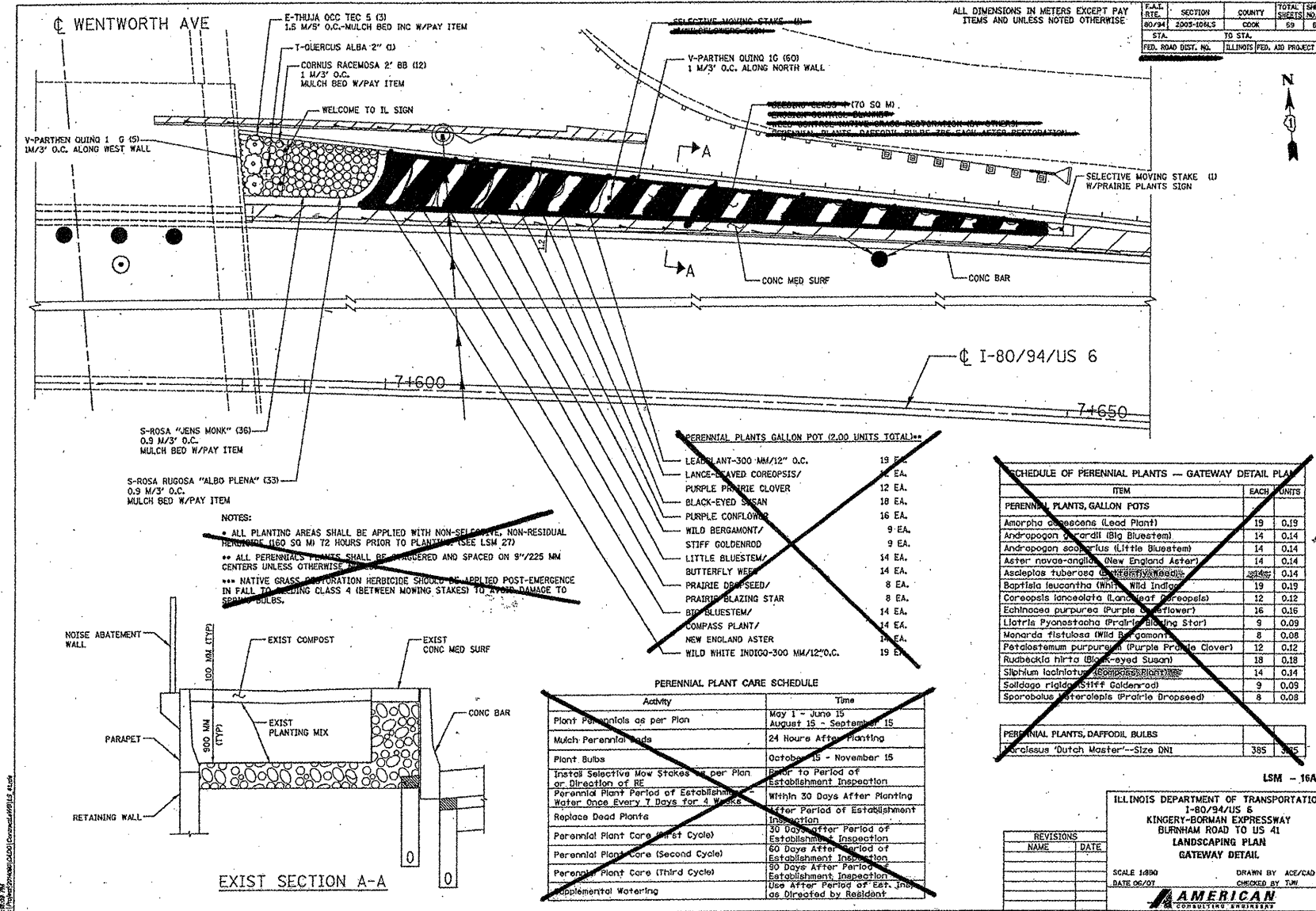
ILLINOIS DEPARTMENT OF TRANSPORTATION  
LANDSCAPE REPAIR LOCATION AND LAYOUT PLAN



**NON-SELECTIVE, NON-RESIDUAL HERBICIDE  
TOPSOIL FURNISH AND PLACE, 1"  
TEMPORARY EROSION CONTROL SEEDING**

<b>ROUTE</b>	<b>SECTION</b>	<b>COUNTY</b>	<b>TOTAL SHEETS</b>	<b>SHEET NUMBER</b>
VARIOUS	2011-099-LS	VARIOUS	21	15

**CONTRACT 60R24**



**SCHEDULE OF LANDSCAPE ITEMS**

DESCRIPTION	SUB-TOTAL PER CYCLE	TOTAL QTY/UNIT
<b>WEED CONTROL, NON-SELECTIVE &amp; NON-RESIDUAL</b>	0.02 GAL	0.06 GAL
<b>TOPSOIL FURNISH AND PLACE, 1"</b>	85 SQ YD	255 SQ YD
<b>TEMPORARY EROSION CONTROL SEEDING</b>	0.20 POUND	0.60 POUND

- NOTES:**
- ALL PLANTING ITEMS SHOWN ON PLANS ARE EXISTING.
  - TAKE CARE NOT TO DISTURB VINES AND GRASS PLUGS ON EAST END OF PLANTING BED UNDER "PRAIRIE PLANT" SIGN.
  - ALL WORK SHALL CONSIST OF 3 CYCLES TO TAKE PLACE IN SPRING, SUMMER, AND FALL.

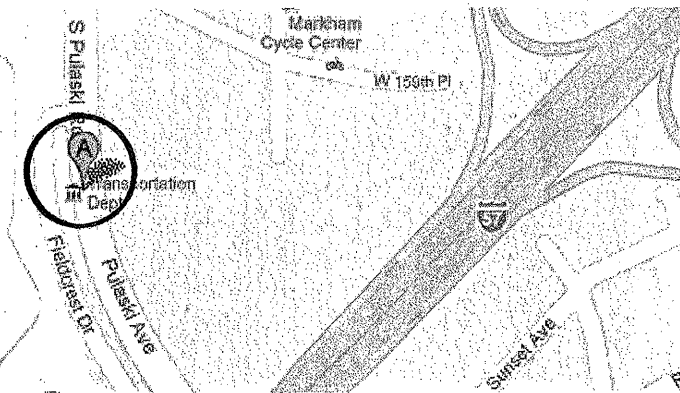
ILLINOIS DEPARTMENT OF TRANSPORTATION  
LANDSCAPE REPAIR LOCATION AND LAYOUT PLAN

ROUTE	SECTION	COUNTY	TOTAL SHEETS	SHEET NUMBER
VARIOUS	2011-099-LS	VARIOUS	21	10

CONTRACT 60R24

PLANS AND SCHEDULE OF LANDSCAPE ITEMS ARE SHOWN ON NEXT SHEET.

GENERAL LOCATION MAP



COUNTY: COOK  
CLAIM: N/A

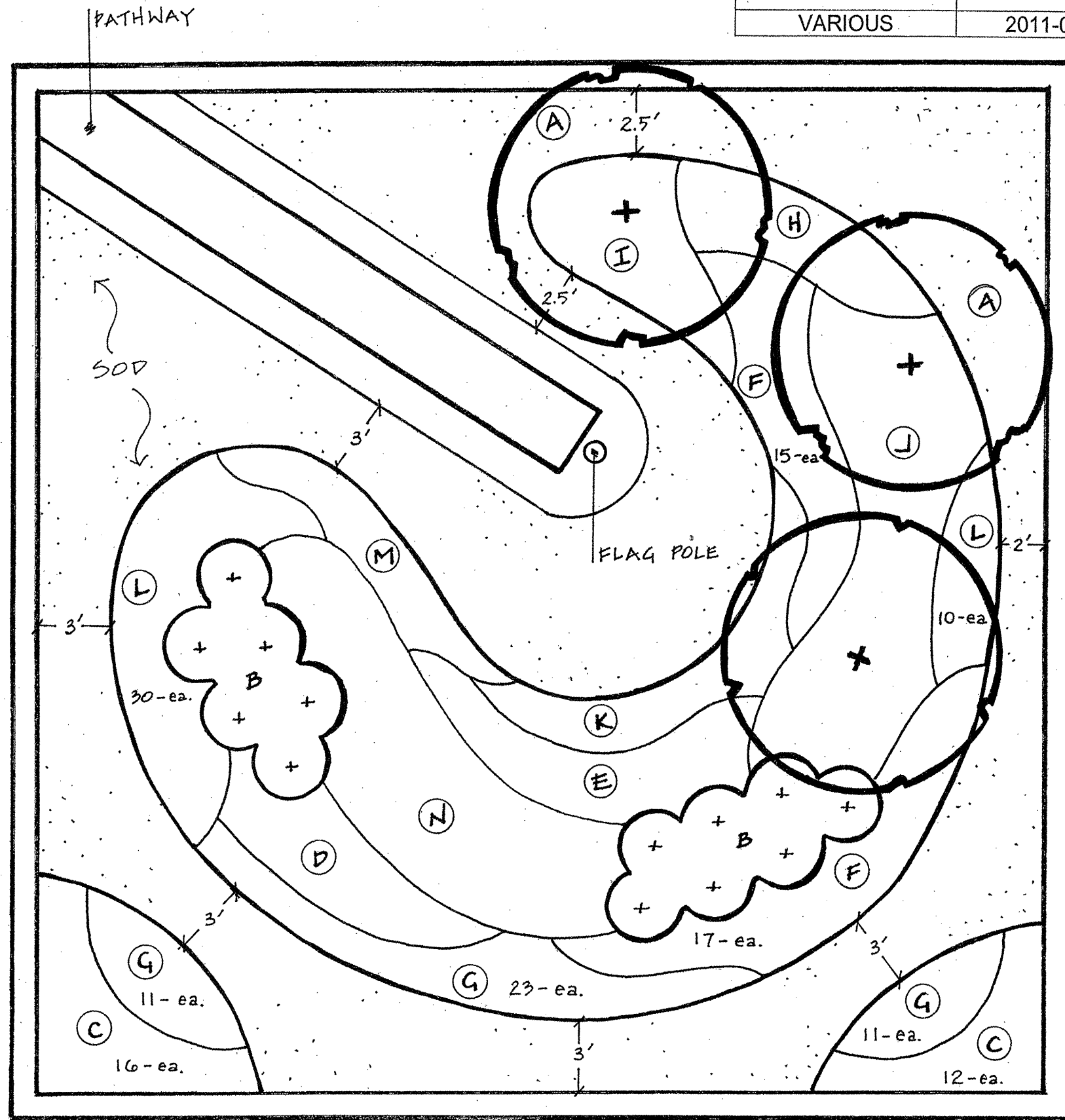
CITY/TOWN: MARKHAM

ILLINOIS DEPARTMENT OF TRANSPORTATION  
LANDSCAPE REPAIR LOCATION AND LAYOUT PLAN



ROUTE	SECTION	COUNTY	TOTAL SHEETS	SHEET NUMBER
VARIOUS	2011-099-LS	VARIOUS	21	17

CONTRACT 60R24



I- 57 MEMORIAL GARDEN PLANT LIST

KEY	BOTANICAL NAME/ COMMON NAME	SIZE	SPACING	QUANTITY
-----	-----------------------------	------	---------	----------

TREE

A	SYRINGA RETICULATA JAPANESE TREE LILAC	2" CALIPER B&B	AS PER PLAN	3
---	---	----------------	-------------	---

SHRUB

B	RHUS AROMATICA 'GROW-LOW' GROW LOW FRAGRANT SUMAC	5 - GAL CONT	36" O.C.	13
---	--	--------------	----------	----

PERENNIALS

C	CALLIRHOE INVOLUCRATA PURPLE POPPYMALLOW	1 - GAL CONT	18" O.C.	28
D	ECHINACEA PURPUREA 'PRAIRIE SPLENDOR' PRAIRIE SPLENDOR PURPLE CONEFLOWER	1 - GAL CONT	18" O.C.	16
E	ECHINACEA 'TIKI TORCH' TIKI TORCH CONEFLOWER	1 - GAL CONT	18" O.C.	16
F	GERANIUM 'ROZANNE' ROZANNE GERANIUM	1 - GAL CONT	18" O.C.	32
G	HEMEROCALLIS 'HAPPY RETURNS' HAPPY RETURNS DAYLILY	1 - GAL CONT	15" O.C.	45
H	HEMEROCALLIS 'PARDON ME' PARDON ME DAYLILY	1 - GAL CONT	15" O.C.	15
I	HEUCHERA 'CITRONELLE' CITRONELLE ALUMROOT	1 - GAL CONT	15" O.C.	17
J	HOSTA 'PARADIGM' PARADIGM HOSTA	1 - GAL CONT	30" O.C.	15
K	MONARDA DIDYMA 'PETITE DELIGHT' PETITE DELIGHT BEEBALM	1 - GAL CONT	18" O.C.	13
L	RUDBECKIA FULGIDA 'VIETTE'S LITTLE SUZY' LITTLE SUZY BLACK-EYED SUSAN	1 - GAL CONT	15" O.C.	40
M	SALVIA NEMOROSA 'HAEUMANARC' MARCUS DWARF SALVIA	1 - GAL CONT	12" O.C.	20
N	SCHIZACHYRIUM SCOPARIUM 'CAROUSEL' CAROUSEL LITTLE BLUESTEM	1 - GAL CONT	24" O.C.	18
TOTAL UNITS				275

MISCELLANEOUS ITEMS

TOPSOIL FURNISH AND PLACE, 24"	SQ YD	NA	60
SODDING, SALT TOLERANT	SQ YD	NA	60

ILLINOIS DEPARTMENT OF TRANSPORTATION  
LANDSCAPE REPAIR LOCATION AND  
LAYOUT PLAN

1" = 5'

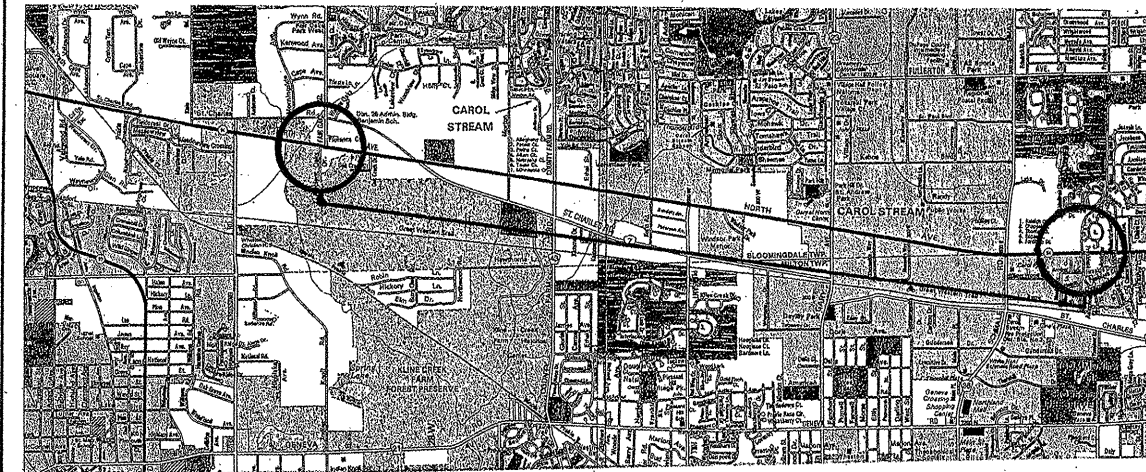
ROUTE	SECTION	COUNTY	TOTAL SHEETS	SHEET NUMBER
VARIOUS	2011-099-LS	VARIOUS	21	12

CONTRACT 60R24

SCHEDULE OF LANDSCAPE ITEMS

DESCRIPTION	QTY/UNIT
<b>CATALPA SPECIOSA</b> CATALPA	3 EACH
<b>CELTIS OCCIDENTALIS</b> COMMON HACKBERRY	7 EACH
<b>GLEDITSIA TRIACANTHOS VAR. INERMIS 'SHADEMASTER'</b> SHADEMASTER HONEYLOCUST	8 EACH
<b>GYMNOCLADUS DIOICUS</b> KENTUCKY COFFEETREE	24 EACH
<b>SYRINGA RETICULATA</b> JAPANESE TREE LILAC	5 EACH
<b>ULMUS AMERICANA 'PRINCETON'</b> PRINCETON AMERICAN ELM	2 EACH

GENERAL LOCATION MAP



COUNTY: DUPAGE  
CLAIM: N/A

CITY/TOWN: CAROL STREAM

LIMITS ARE SHOWN ON NEXT SHEET.

ALL TREE PLANTINGS ARE LOCATED IN THE MEDIANS BETWEEN FAIR OAKS RD. AND PRESIDENT ST.

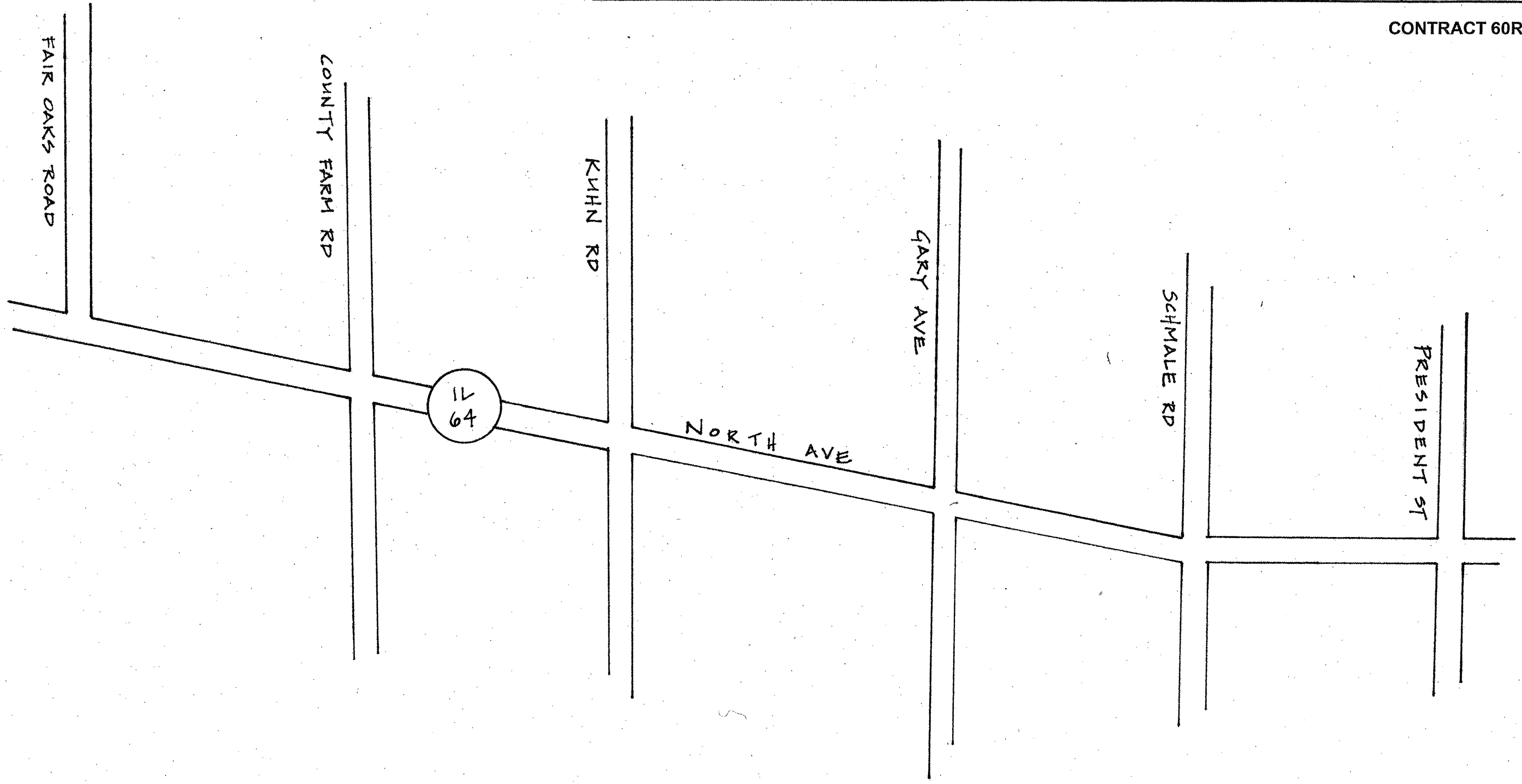
DETAILED MAPS WILL BE PROVIDED AT THE PRE-CONSTRUCTION MEETING.

ILLINOIS DEPARTMENT OF TRANSPORTATION

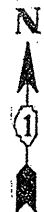
LANDSCAPE REPAIR LOCATION AND LAYOUT PLAN

ROUTE	SECTION	COUNTY	TOTAL SHEETS	SHEET NUMBER
VARIOUS	2011-099-LS	VARIOUS	21	19

CONTRACT 60R24

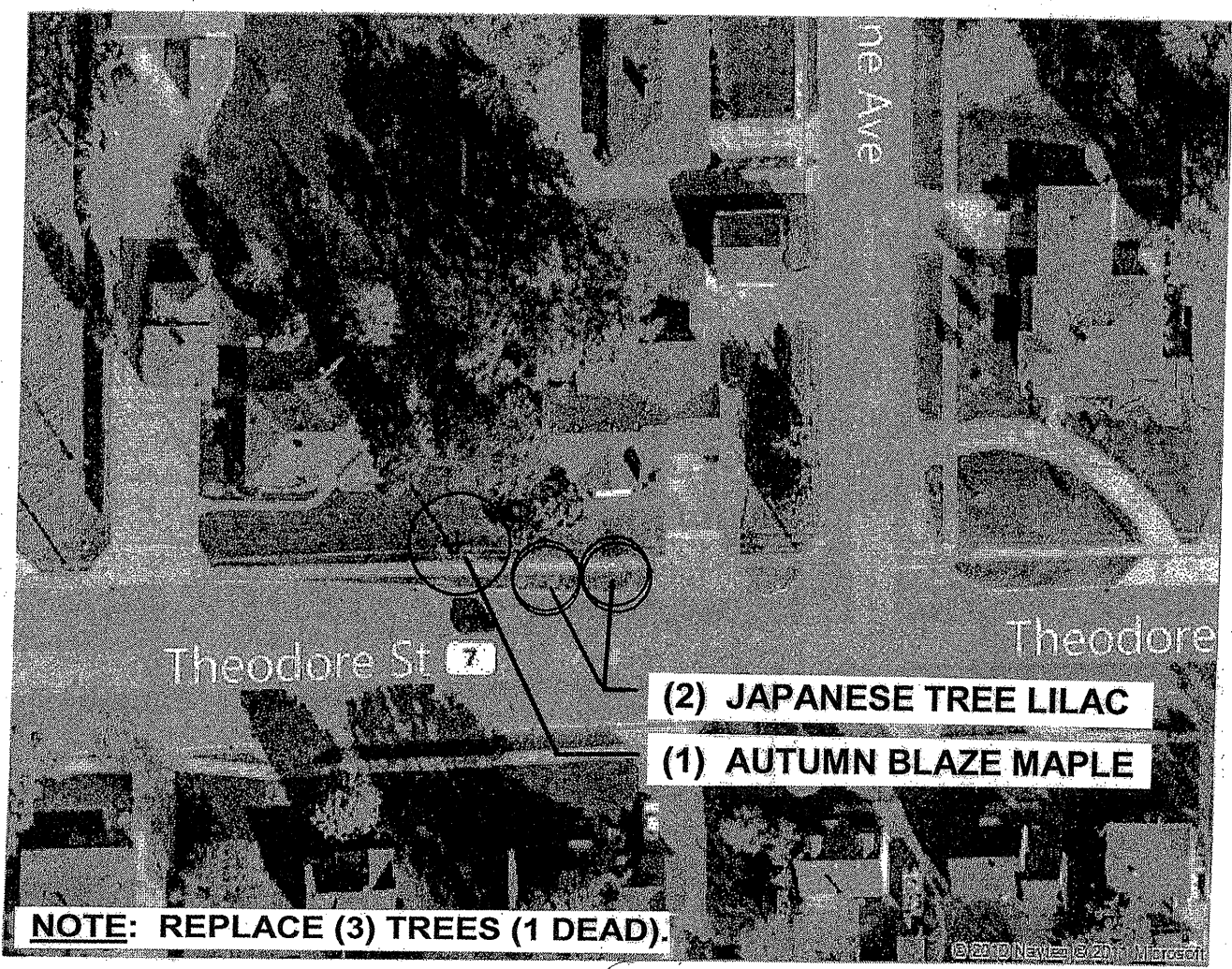


ILLINOIS DEPARTMENT OF TRANSPORTATION  
 LANDSCAPE REPAIR LOCATION AND  
 LAYOUT PLAN



ROUTE	SECTION	COUNTY	TOTAL SHEETS	SHEET NUMBER
VARIOUS	2011-099-LS	VARIOUS	21	20

CONTRACT 60R24



**GENERAL LOCATION MAP**

COUNTY: WILL  
CLAIM: N/A

CITY/TOWN: CREST HILL

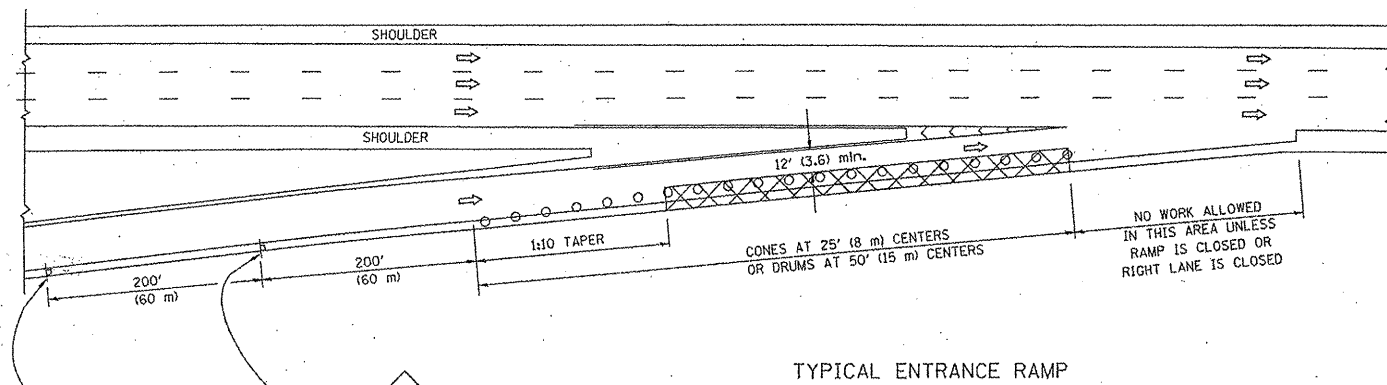
**SCHEDULE OF LANDSCAPE ITEMS**

DESCRIPTION	QTY/UNIT
<b>ACER X FREEMANII 'AUTUMN BLAZE'</b> AUTUMN BLAZE MAPLE	1 EACH
<b>SYRINGA RETICULATA</b> JAPANESE TREE LILAC	2 EACH

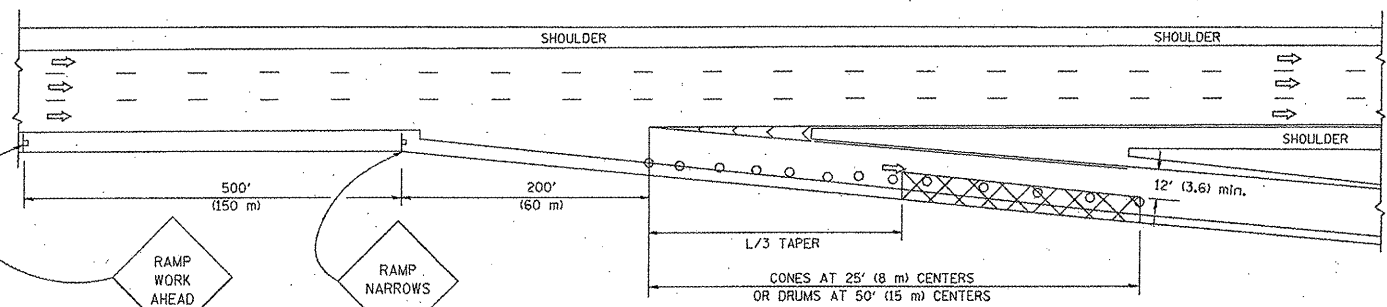
PLEASE CONTACT THE ROADSIDE DEVELOPMENT UNIT AT (847) 705-4171 AT LEAST 72 HOURS IN ADVANCE OF PLANTING TO VERIFY LAYOUT.

ILLINOIS DEPARTMENT OF TRANSPORTATION  
LANDSCAPE REPAIR LOCATION AND LAYOUT PLAN

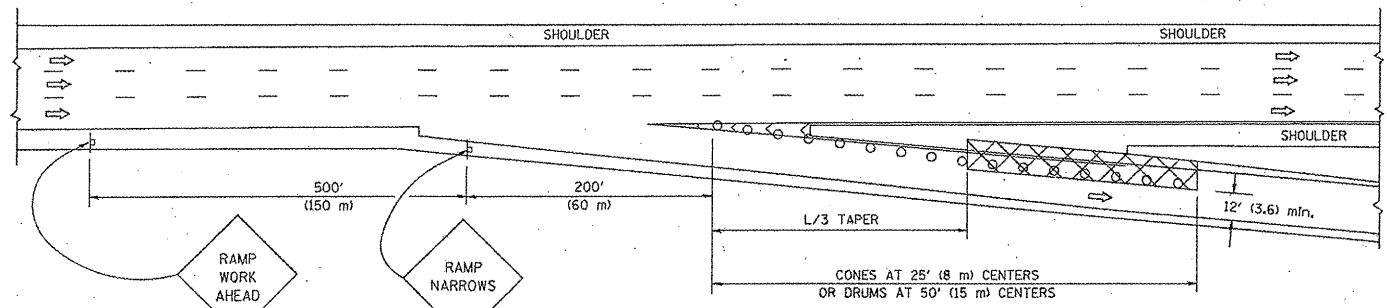
PARTIAL RAMP CLOSURE DETAILS



TYPICAL ENTRANCE RAMP



TYPICAL EXIT RAMP



TYPICAL EXIT RAMP

SYMBOLS

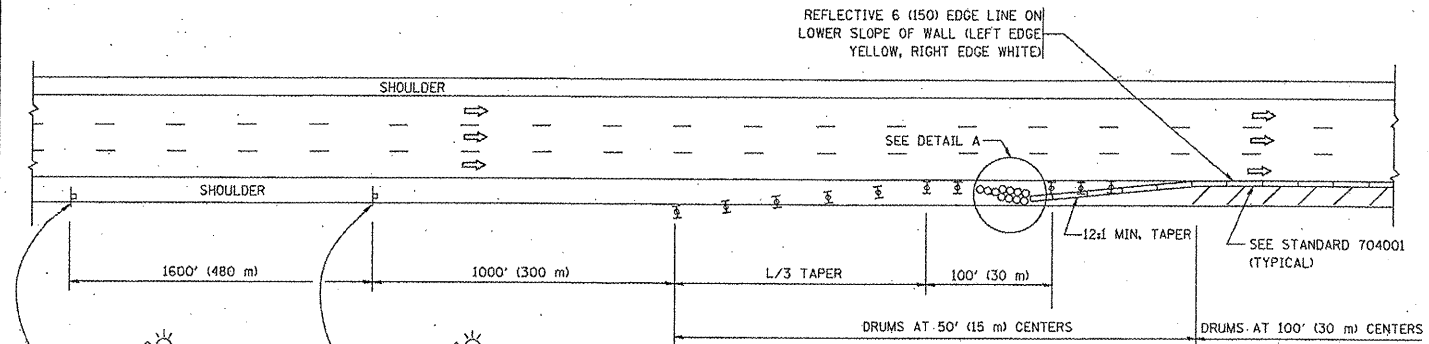
- ACTIVE WORK AREA
- SIGN ON PORTABLE OR PERMANENT SUPPORT
- FLAGGER WITH CONTROL SIGN
- TYPE II BARRICADE, DRUM OR VERTICAL BARRICADE WITH STEADY BURN MONO-DIRECTIONAL LIGHT
- CONE, DRUM OR BARRICADE

GENERAL NOTES

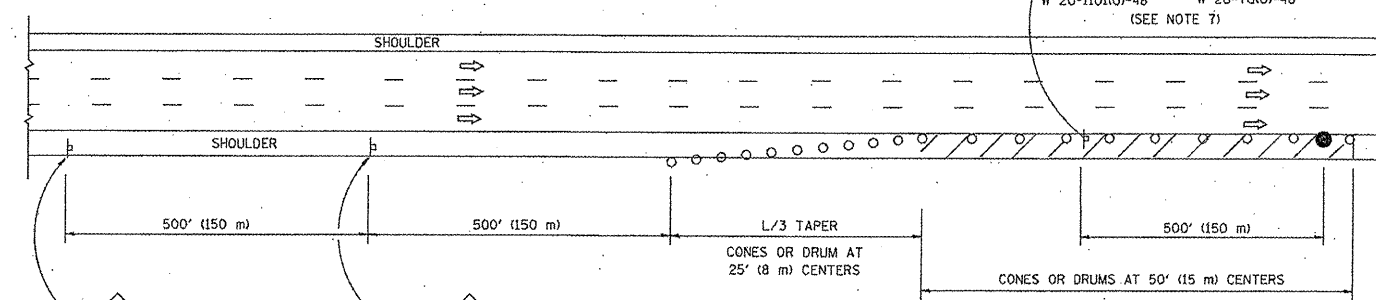
1. THE "L" DISTANCE EQUALS:
 

SPEED LIMIT	FORMULAS
45 mph (80 km/h)	METRIC ENGLISH
OR GREATER:	$L=0.65(WXS)$ $L=(WXS)$
	W = WIDTH OF OFFSET IN FEET (METERS)
	S = NORMAL POSTED SPEED MPH (KM/H)
2. PLASTIC DRUMS WITH HIGH PERFORMANCE REFLECTIVE SHEETING AND STEADY BURNING LIGHTS ARE REQUIRED FOR ALL NIGHTTIME CLOSURES.
3. ALL SIGNS SHALL BE POST MOUNTED IF THE CLOSURE TIME EXCEEDS FOUR DAYS.
4. FLASHING LIGHTS SHALL BE USED DURING THE HOURS OF DARKNESS AND SHALL BE INSTALLED ABOVE THE FIRST TWO SETS OF SIGNS.

SHOULDER CLOSURE DETAILS



PERMANENT SHOULDER CLOSURE



DAYTIME SHOULDER CLOSURE

THIS DETAIL IS USED WHERE:  
 1. VEHICLES, EQUIPMENT, WORKERS OR THEIR ACTIVITIES ENCR OACH IN AN AREA CLOSER THAN 15' (4.5 m) TO THE EDGE OF PAVEMENT FOR A PERIOD IN EXCESS OF 15 MINUTES.

ARRAY DESIGN PER MANUFACTURER TO BE NCHRP 350 COMPLIANT.

DETAIL "A"  
 IMPACT ATTENUATOR, TEMPORARY  
 (SEE NOTE 5)

ALL DIMENSIONS ARE IN INCHES (MILLIMETERS) UNLESS OTHERWISE SHOWN.

FILE NAME =  
 W:\d\stsd\22x34\col7.dgn

USER NAME = logee	DESIGNED -	REVISED - 04-03
PLOT SCALE = 50,0000' / IN.	DRAWN - D.W.S.	REVISED - J.A.F. 12-06
PLOT DATE = 1/26/2010	CHECKED -	REVISED - S.P.B. 01-07
	DATE - 11-96	REVISED - S.P.B. 12-09

STATE OF ILLINOIS  
 DEPARTMENT OF TRANSPORTATION

TRAFFIC CONTROL DETAILS FOR FREEWAY  
 SHOULDER CLOSURES AND PARTIAL RAMP CLOSURES

SCALE: NONE SHEET NO. 1 OF 1 SHEETS STA. TO STA.

F.A. RTE.	SECTION	COUNTY	TOTAL SHEETS	SHEET NO.
VAR	2011-099-LS	VARIOUS	24	21
TC-17		CONTRACT NO.		
FED. ROAD DIST. NO. 1 ILLINOIS FED. AID PROJECT				