

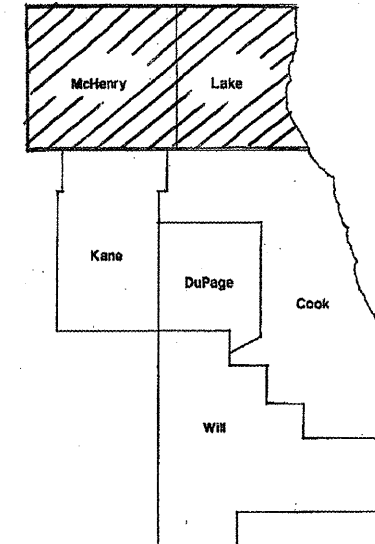
DISTRICT ONE BUREAU OF MAINTENANCE: J. STUMPNER
MAINTENANCE LANDSCAPE DESIGNER: R. WANNER / T. JACKSON (847) 705-4171

ROUTE	SECTION	COUNTY	TOTAL SHEETS	SHEET NUMBER
VARIOUS	2011-098-DTR	MCHENRY/LAKE	7	1

CONTRACT 60R25
D-91-057-12

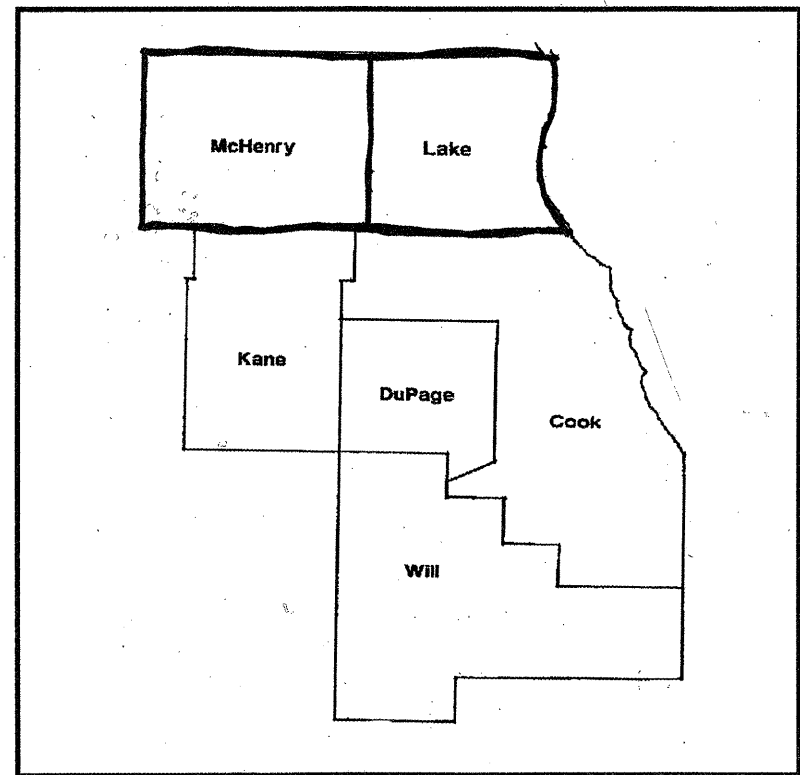
STATE OF ILLINOIS
DEPARTMENT OF TRANSPORTATION
DIVISION OF HIGHWAYS
DISTRICT ONE
PROPOSED HIGHWAY PLANS

ROUTE: VARIOUS
SECTION 2011-098 DTR
TREE REMOVAL AND PRUNING
MCHENRY/LAKE COUNTIES
C-91-057-12



LOCATION OF IMPROVEMENT INDICATED THUS:

**IMPROVEMENT IS IN VARIOUS
LOCATIONS WITHIN DISTRICT
ONE**



STATE OF ILLINOIS
DEPARTMENT OF TRANSPORTATION
DIVISION OF HIGHWAYS
SUBMITTED: SEPTEMBER 2, 2011
Diana M. O'Keefe
DEPUTY DIRECTOR OF HIGHWAYS, REGION ENGINEER
October 14 2011
Scott E. Stitt P.E.
ENGINEER OF DESIGN AND ENVIRONMENT
October 14 2011
Christine M. Reed
DIRECTOR OF HIGHWAYS, CHIEF ENGINEER

**PRINTED BY THE AUTHORITY
OF THE STATE OF ILLINOIS**

J.U.L.I.E.: JOINT UTILITY LOCATION
INFORMATION FOR EXCAVATION
(800) 892-0123 OR 811

CONTRACT 60R25

ROUTE	SECTION	COUNTY	TOTAL SHEETS	SHEET NUMBER
VARIOUS	2011-098 DTR	MCHENRY/LAKE	7	2

CONTRACT 60R25

INDEX OF SHEETS

- 1) COVER SHEET
- 2) INDEX OF SHEETS, STATE STANDARDS
- 3) SUMMARY OF QUANTITIES
- 4) SAMPLE WORK ORDER
- 5) MCHENRY COUNTY MAP
- 6) LAKE COUNTY MAP
- 7) TC-17 TRAFFIC CONTROL DETAIL FOR FREEWAY SHOULDER CLOSURES AND PARTIAL RAMP CLOSURES

STATE STANDARDS

701001-02 701006-03 701101-02
701106-02 701201-04 701301-04 701421-03
701501-06 701601-07 701901-01

ILLINOIS DEPARTMENT OF TRANSPORTATION
INDEX OF SHEETS
TREE REMOVAL AND PRUNING

Rev.

ROUTE	SECTION	COUNTY	TOTAL SHEETS	SHEET NUMBER
VARIOUS	2011-098 DTR	MCHENRY/LAKE	7	3

CONTRACT 60R25

SUMMARY OF QUANTITIES

FORMAL CONTRACTS FUNDS

PAY ITEM	DESCRIPTION	UNIT	MCHENRY COUNTY <i>(11)</i> 0031	LAKE COUNTY <i>(097)</i> 0031	URBAN 100% STATE
					TOTAL
20100210	TREE REMOVAL (OVER 15 UNITS DIAMETER)	UNIT	1200	1200	2400
20101300	TREE PRUNING (1 TO 10 INCH DIAMETER)	EACH	5	0	5
20101350	TREE PRUNING (OVER 10 INCH DIAMETER)	EACH	5	5	10
67100100	MOBILIZATION	L SUM	1	0	1
20100110	TREE REMOVAL (6- 15 UNITS DIAMETER)	UNIT	1000	1000	2000
X0325222	WEED CONTROL, BASAL TREATMENT	GALLON	8	7	15
X2010100	TREE LIMB REMOVAL (4 TO 10 INCHES DIAMETER)	EACH	15	10	25
X2010200	TREE LIMB REMOVAL (OVER 10 INCHES DIAMETER)	EACH	10	10	20
X2010300	TREE REMOVAL (UNDER 6 UNITS DIAMETER)	UNIT	50	50	100
X2010400	STUMP REMOVAL ONLY	UNIT	25	25	50
Z0064800	SELECTIVE CLEARING	UNIT	10	10	20

ILLINOIS DEPARTMENT OF TRANSPORTATION

SUMMARY OF QUANTITIES

TREE REMOVAL AND PRUNING

ROUTE	SECTION	COUNTY	TOTAL SHEETS	SHEET NUMBER
VARIOUS	2011-098 DTR	MCHENRY/LAKE	7	4

CONTRACT 60R25

ID: _____

DEAD AND DISEASED TREE REMOVAL REQUEST

REQUESTED BY: _____ DATE OF REQUEST: _____

YARD: _____ TELEPHONE: () _____

(Please complete information when request for tree removal is from outside the Bureau of Maintenance)

NAME: _____

ADDRESS: _____

TELEPHONE: () _____

LOCATION OF DEAD/DISEASED TREE(S)
(Please fill out completely to expedite locating the repair)

COUNTY: _____ TOWN/CITY: _____

MARKED/NAMED ROUTE: _____

DIRECTIONS FROM NEAREST MAJOR CROSS ROAD OR MAJOR LANDMARK: _____

SIDE OF ROADWAY: _____

ADDITIONAL DIRECTIONS TO TREE: _____

PLEASE INDICATE APPROXIMATE SIZE AND NUMBER OF TREES BASED ON VISUAL

COMMENTS: _____
(Size/Number)

OFFICE USE ONLY

DATE INSPECTED: _____ TYPE OF REMOVAL: _____

DTR #: _____

CONTRACT #: _____

WORK ORDER #: _____ NOTES: _____

POSTED IN SUMMARY: _____

RETURN REQUESTS TO CONTRACTS SECTION

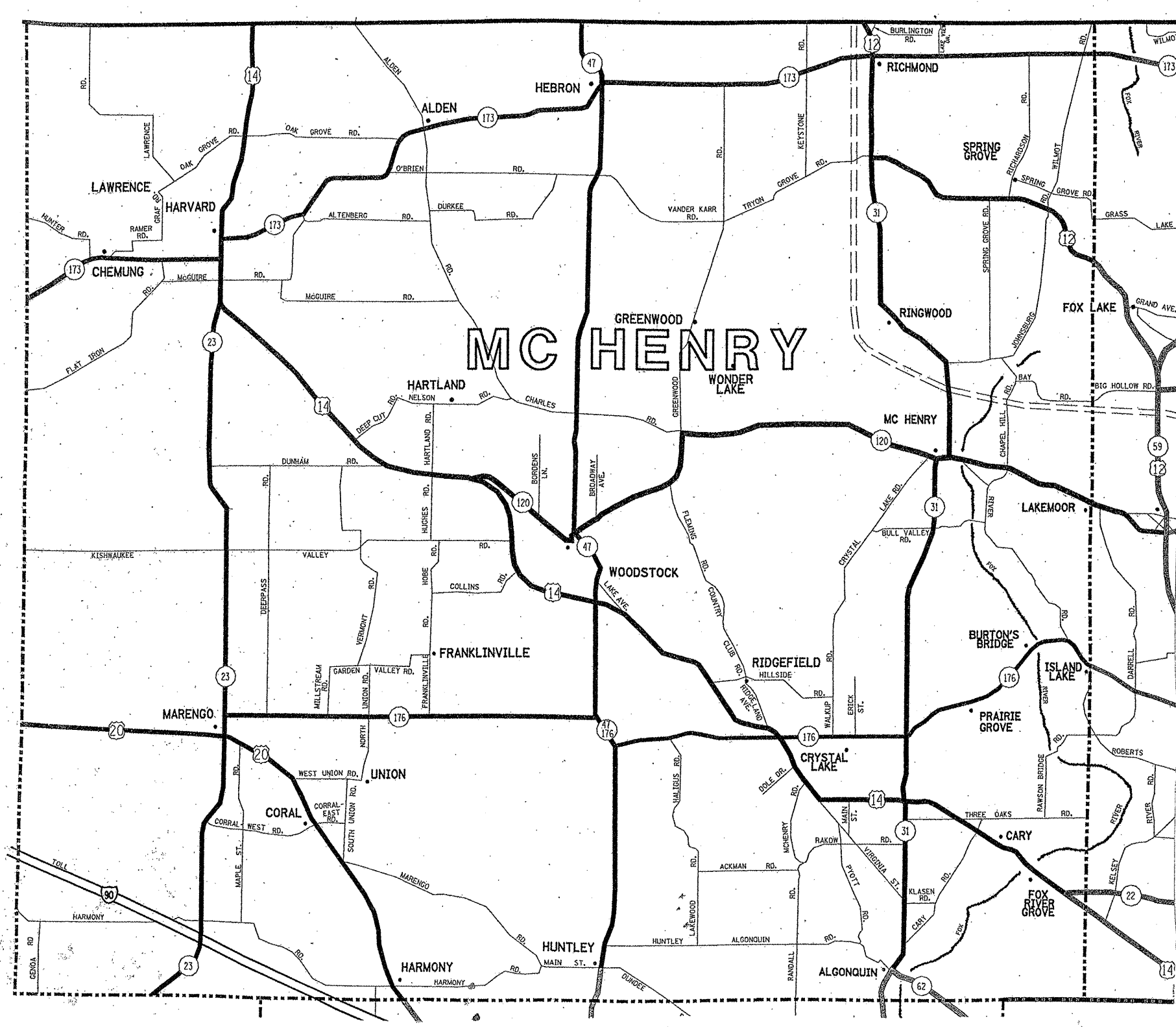
ILLINOIS DEPARTMENT OF TRANSPORTATION

Sample Work Order

TREE REMOVAL AND PRUNING

ROUTE	SECTION	COUNTY	TOTAL SHEETS	SHEET NUMBER
VARIOUS	2011-098 DTR	MCHENRY/LAKE	7	5

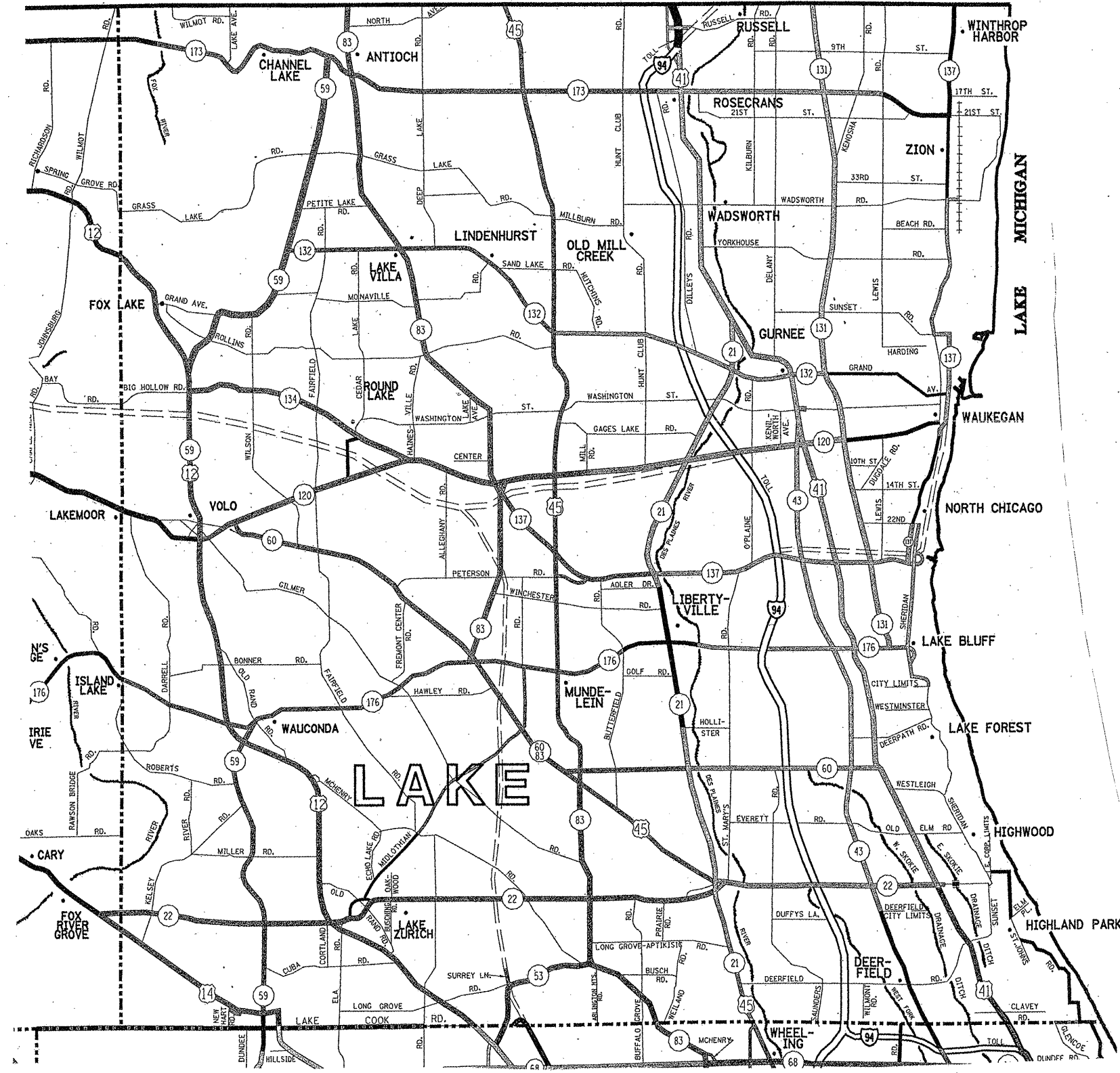
CONTRACT 60R25



ILLINOIS DEPARTMENT OF TRANSPORTATION
 MCHENRY COUNTY MAP
 TREE REMOVAL AND PRUNING

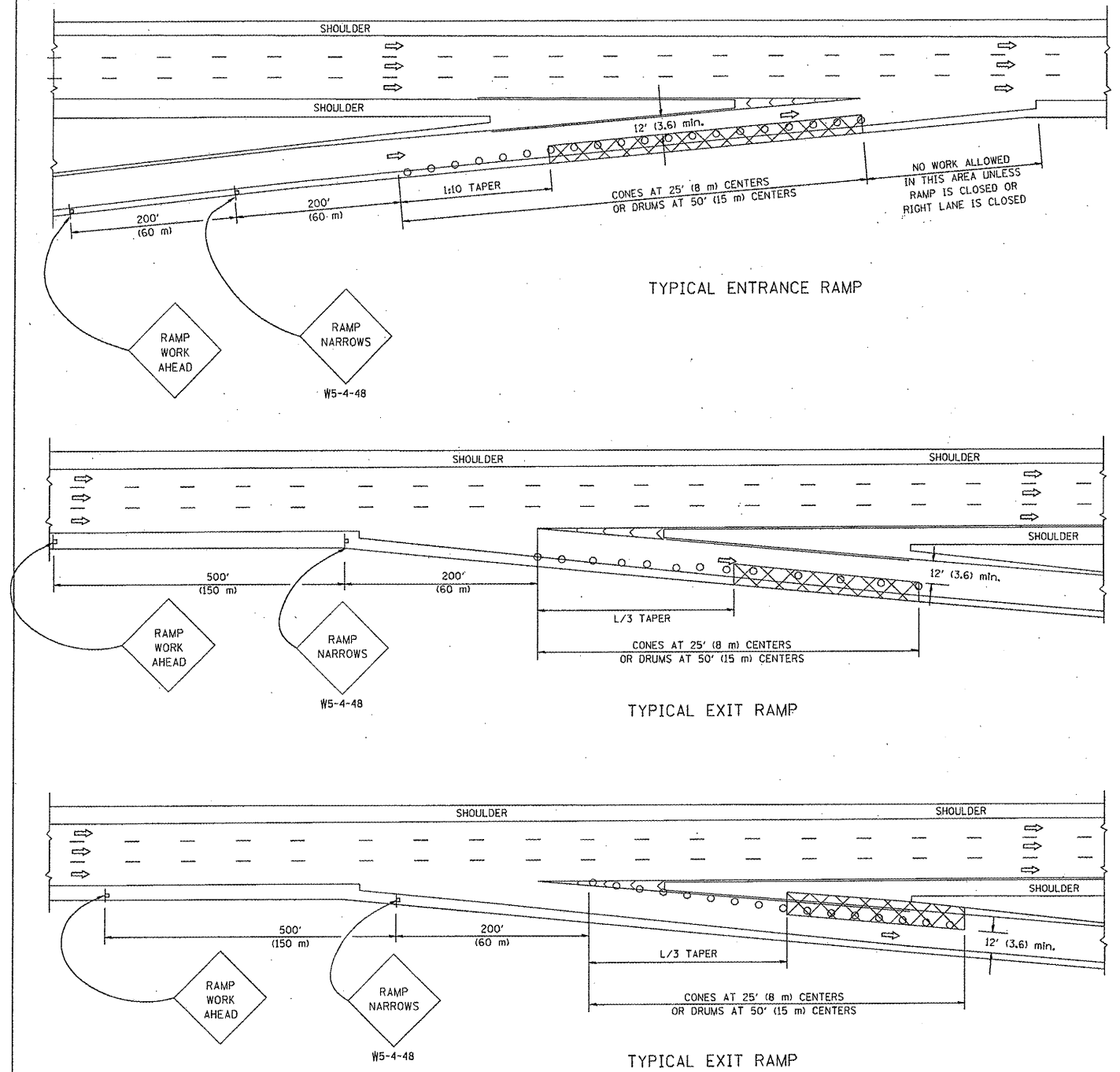
ROUTE	SECTION	COUNTY	TOTAL SHEETS	SHEET NUMBER
VARIOUS	2011-098 DTR	MCHENRY/LAKE	7	6

CONTRACT 60R25



ILLINOIS DEPARTMENT OF TRANSPORTATION
 LAKE COUNTY MAP
 TREE REMOVAL AND PRUNING

PARTIAL RAMP CLOSURE DETAILS



TYPICAL ENTRANCE RAMP

TYPICAL EXIT RAMP

TYPICAL EXIT RAMP

SYMBOLS

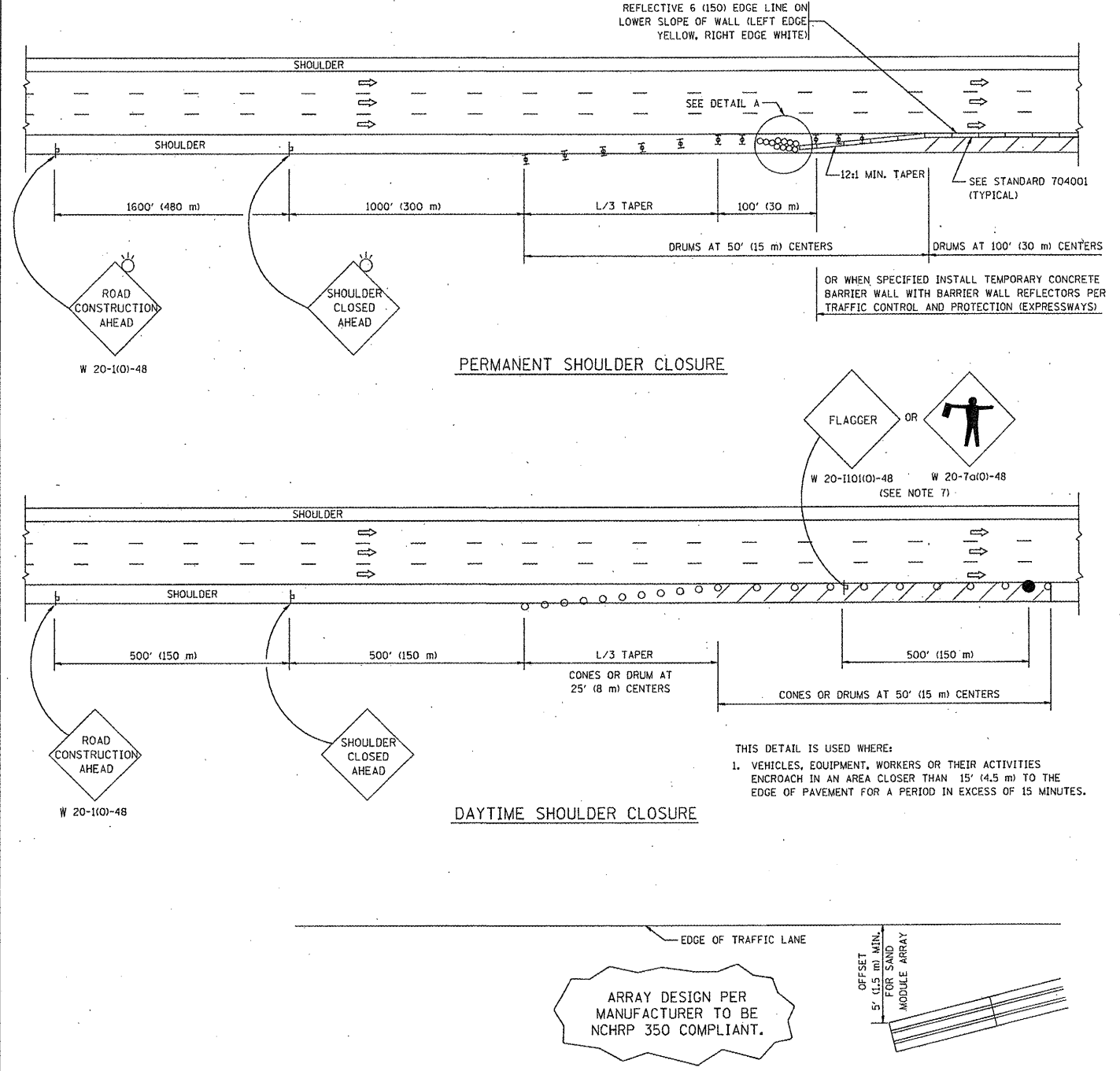
- ACTIVE WORK AREA
- SIGN ON PORTABLE OR PERMANENT SUPPORT
- FLAGGER WITH CONTROL SIGN
- TYPE II BARRICADE, DRUM OR VERTICAL BARRICADE WITH STEADY BURN MONO-DIRECTIONAL LIGHT
- CONE, DRUM OR BARRICADE

GENERAL NOTES

1. THE "L" DISTANCE EQUALS:

SPEED LIMIT	FORMULAS
45 mph (80 km/h) OR GREATER:	METRIC ENGLISH L=0.65(W)(S) L=(W)(S)
W = WIDTH OF OFFSET IN FEET (METERS)	
S = NORMAL POSTED SPEED MPH (KM/H)	
2. PLASTIC DRUMS WITH HIGH PERFORMANCE REFLECTIVE SHEETING AND STEADY BURNING LIGHTS ARE REQUIRED FOR ALL NIGHTTIME CLOSURES.
3. ALL SIGNS SHALL BE POST MOUNTED IF THE CLOSURE TIME EXCEEDS FOUR DAYS.
4. FLASHING LIGHTS SHALL BE USED DURING THE HOURS OF DARKNESS AND SHALL BE INSTALLED ABOVE THE FIRST TWO SETS OF SIGNS.

SHOULDER CLOSURE DETAILS



PERMANENT SHOULDER CLOSURE

DAYTIME SHOULDER CLOSURE

ARRAY DESIGN PER MANUFACTURER TO BE NCHRP 350 COMPLIANT.

DETAIL "A"
IMPACT ATTENUATOR, TEMPORARY
(SEE NOTE 5)

FILE NAME = W:\distatd\22x34\vol7.dgn	USER NAME = lsgoe	DESIGNED -	REVISED - 04-03	STATE OF ILLINOIS DEPARTMENT OF TRANSPORTATION	TRAFFIC CONTROL DETAILS FOR FREEWAY SHOULDER CLOSURES AND PARTIAL RAMP CLOSURES			F.A. RTE.	SECTION	COUNTY	TOTAL SHEETS	SHEET NO.	
		DRAWN - D.W.S.	REVISED - J.A.F. 12-06		SCALE: NONE	SHEET NO. 1 OF 1 SHEETS	STA.	TO STA.	VAR 201-098 DTR	MH/L	7	7	
		PLOT SCALE = 50,0000'' / IN.	REVISED - S.P.B. 01-07						TC-17				
		PLOT DATE = 1/26/2010	REVISED - S.P.B. 12-09										
									FED. ROAD DIST. NO. 1 ILLINOIS	FED. AID PROJECT			

ALL DIMENSIONS ARE IN INCHES (MILLIMETERS) UNLESS OTHERWISE SHOWN.