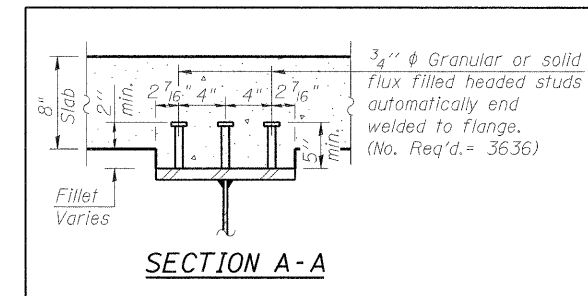
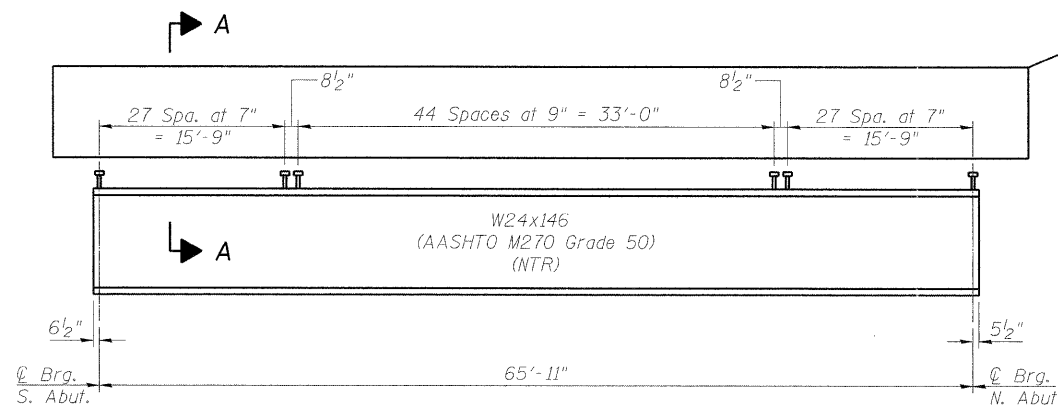


TOP OF BEAM ELEVATION TABLE
(For Fabrication use only)

Beam	☉ Brg. S. Abut.	☉ Brg. N. Abut.
1	646.07	645.79
2	646.16	645.88
3	646.26	645.98
4	646.35	646.07
5	646.44	646.16
6	646.53	646.25
7	646.53	646.25
8	646.44	646.16
9	646.35	646.07
10	646.26	645.98
11	646.16	645.88
12	646.07	645.79



For Information Only



BEAM ELEVATION

Load carrying components designated "NTR" shall conform to the Supplemental Requirements for Notch Toughness, Zone 2.

FILE NAME = g:\proj\proj\12102155_007\cadd\structure\12102155-07-Framing.dgn

	USER NAME = 2aayerb	DESIGNED - BPS	REVISED -	STATE OF ILLINOIS DEPARTMENT OF TRANSPORTATION	FRAMING PLAN S.N. 016-0680	F.A.J. RTE. 2692	SECTION 2011-205-F	COUNTY COOK	TOTAL SHEETS 17	SHEET NO. 9
	PLOT SCALE = N/A	CHECKED - BHS	REVISED -			SHEET NO. 517 OF 29 SHEETS		CONTRACT NO. 60R35		ILLINOIS FED. AID PROJECT
	PLOT DATE = 10/15/2011	CHECKED - BHS	REVISED -							