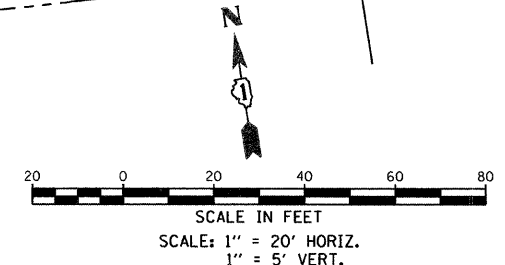
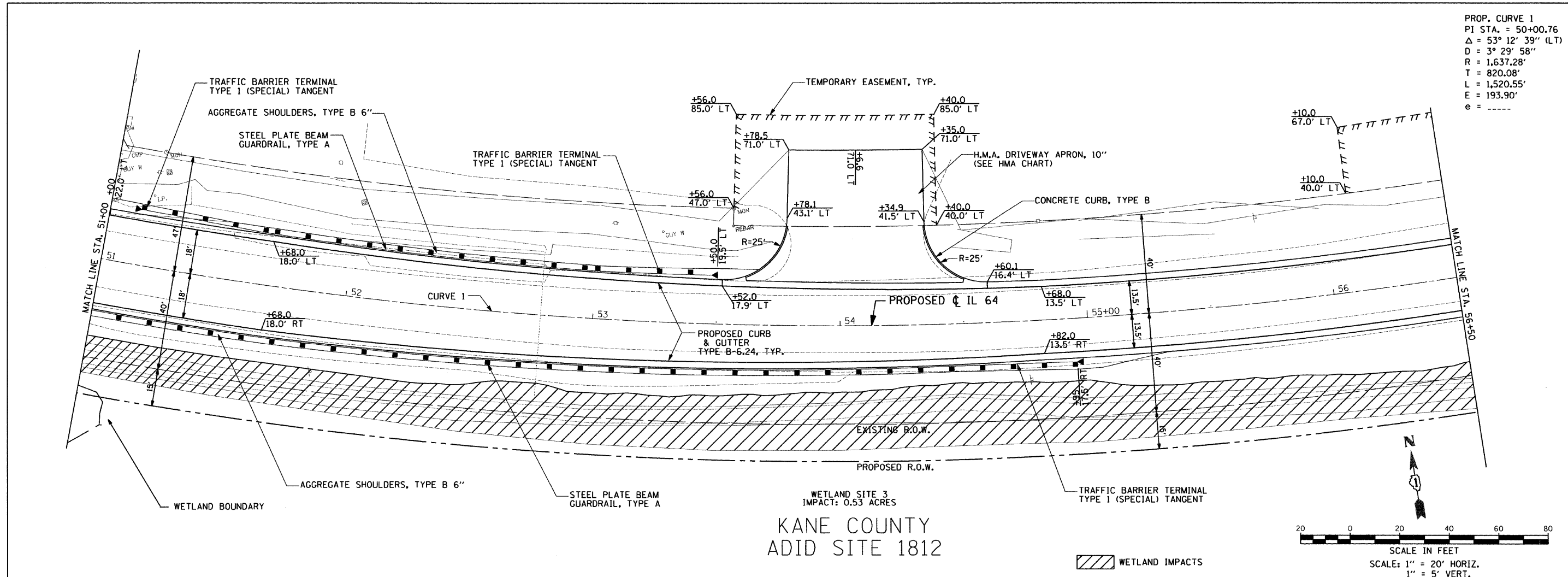


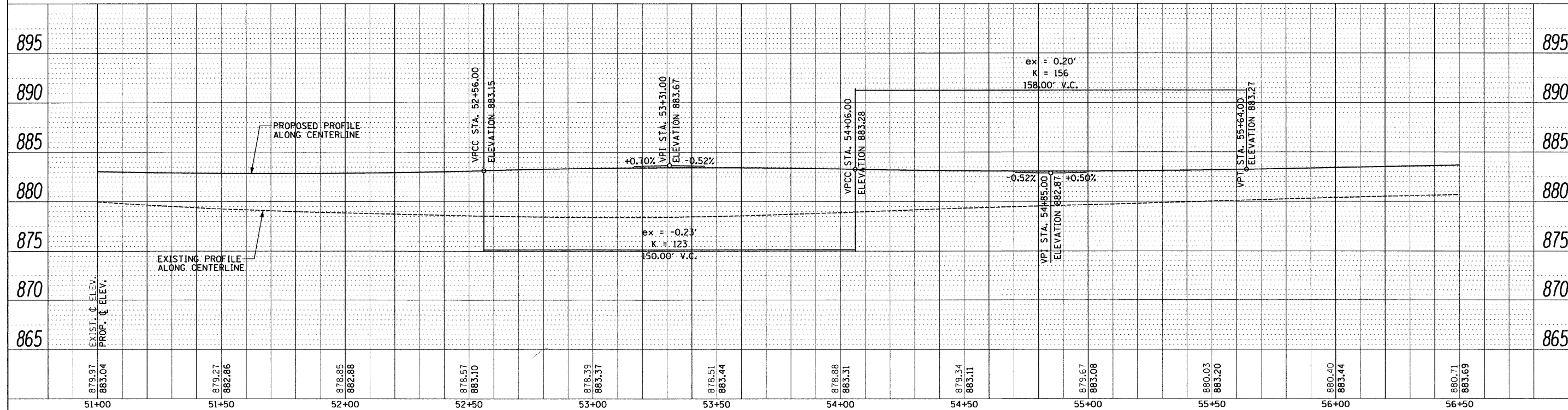
PROP. CURVE 1  
 PI STA. = 50+00.76  
 $\Delta = 53^\circ 12' 39''$  (LT)  
 $D = 3^\circ 29' 58''$   
 $R = 1,637.28'$   
 $T = 820.08'$   
 $L = 1,520.55'$   
 $E = 193.90'$   
 $e = \text{-----}$

PLAN	SURVEYED	DATE
	PLotted	
	Checked	
	By	
	File Name	

PROFILE	SURVEYED	DATE
	Plotted	
	Checked	
	By	
	File Name	



KANE COUNTY  
 ADID SITE 1812



FILE NAME =	USER NAME = USER.	DESIGNED - AR	REVISED -	<b>STATE OF ILLINOIS DEPARTMENT OF TRANSPORTATION</b>	<b>IL 64 AT IL 47 INTERSECTION IMPROVEMENTS PLAN AND PROFILE</b>	F.A.P. RTE. 307	SECTION 126N-1	COUNTY KANE	TOTAL SHEETS 156	SHEET NO. 21	
#FILE#	10-12-2011	DRAWN - AR	REVISED -			SCALE: 1" = 20'	SHEET NO. 3 OF 8	SHEETS STA. 51+00 TO STA. 56+50		CONTRACT NO. 62278	
	PLOT SCALE = 20,0000' / IN.	CHECKED - RS	REVISED -			ILLINOIS FED. AID PROJECT					
	PLOT DATE = 10/11/2011	DATE - 09-01-2011	REVISED -								