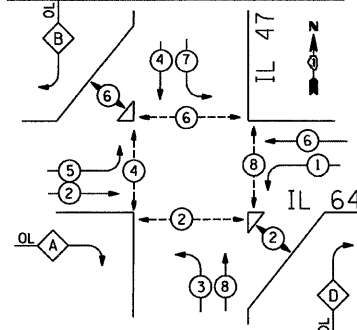
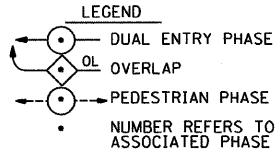


CONTROLLER SEQUENCE

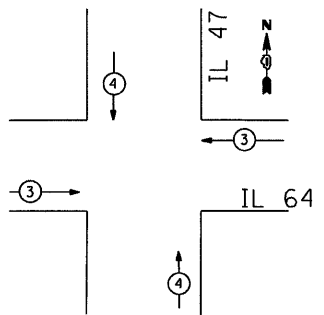


OVERLAP LETTER	PERMITTED PHASE	PROTECTED PHASE
A	2	3
B	4	5
D	8	1

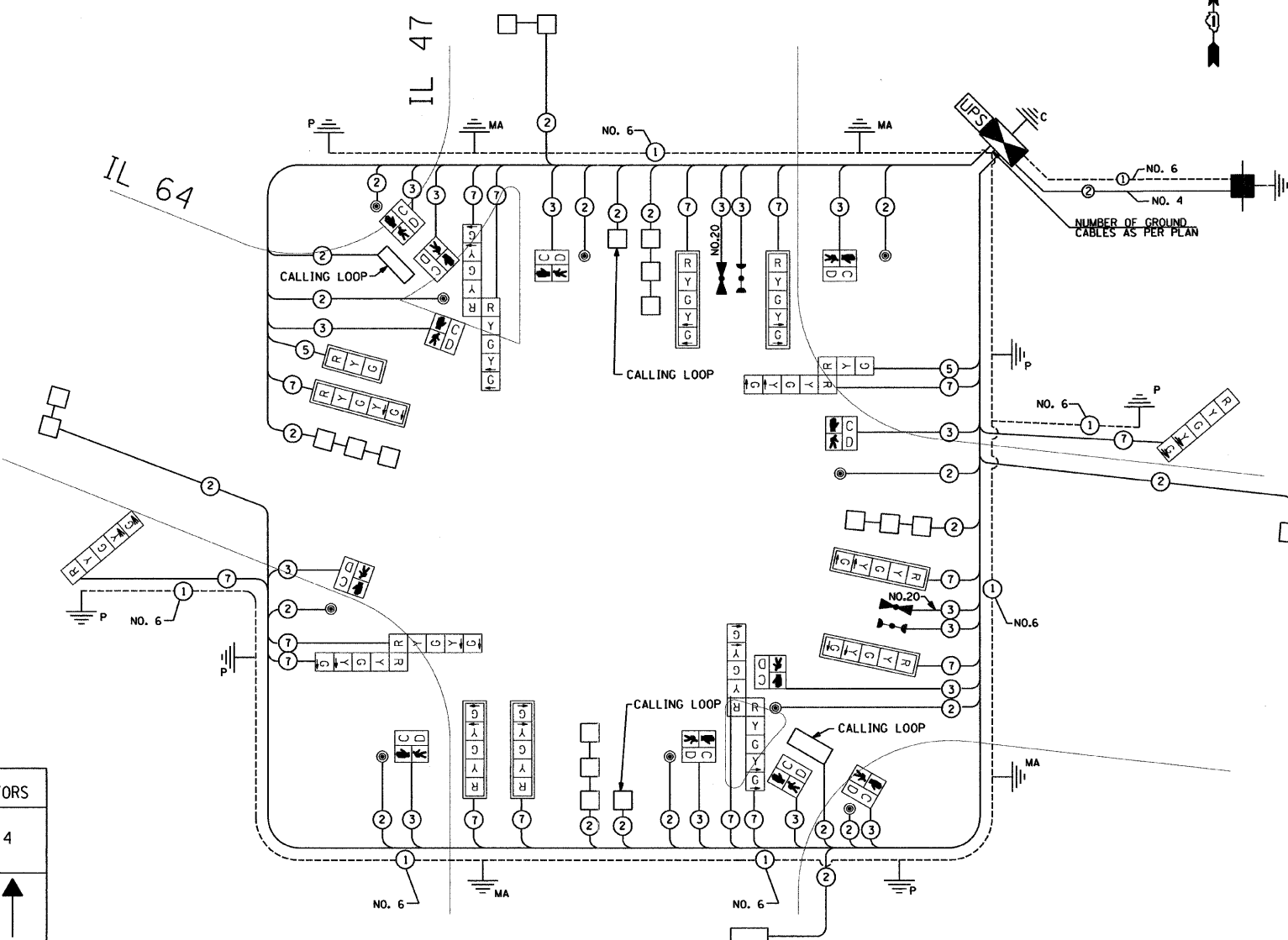
PHASE DESIGNATION DIAGRAM



EMERGENCY VEHICLE PREEMPTION SEQUENCE



PROPOSED EMERGENCY VEHICLE PREEMPTORS		
EMERGENCY VEHICLE PREEMPTOR	3	4
MOVEMENT	← →	↑ ↓



SCHEDULE OF QUANTITIES

ITEM	UNIT	QUANTITY
SIGN PANEL - TYPE 1	SQ FT	30
SERVICE INSTALLATION - POLE MOUNTED	EACH	1
CONDUIT IN TRENCH, 2" DIA., GALVANIZED STEEL	FOOT	824
CONDUIT IN TRENCH, 2 1/2" DIA., GALVANIZED STEEL	FOOT	185
CONDUIT IN TRENCH, 3" DIA., GALVANIZED STEEL	FOOT	49
CONDUIT IN TRENCH, 3 1/2" DIA., GALVANIZED STEEL	FOOT	12
CONDUIT IN TRENCH, 4" DIA., GALVANIZED STEEL	FOOT	226
CONDUIT PUSHED, 2" DIA., GALVANIZED STEEL	FOOT	619
CONDUIT PUSHED, 4" DIA., GALVANIZED STEEL	FOOT	361
HANDHOLE	EACH	8
HEAVY-DUTY HANDHOLE	EACH	5
DOUBLE HANDHOLE	EACH	2
TRENCH AND BACKFILL FOR ELECTRICAL WORK	FOOT	1,246
FULL-ACTUATED CONTROLLER AND TYPE IV CABINET	EACH	1
UNINTERRUPTIBLE POWER SUPPLY, EXTENDED	EACH	1
ELECTRIC CABLE IN CONDUIT, SIGNAL NO. 14 2C	FOOT	1,677
ELECTRIC CABLE IN CONDUIT, SIGNAL NO. 14 3C	FOOT	2,293
ELECTRIC CABLE IN CONDUIT, SIGNAL NO. 14 5C	FOOT	268
ELECTRIC CABLE IN CONDUIT, SIGNAL NO. 14 7C	FOOT	3,094
ELECTRIC CABLE IN CONDUIT, LEAD-IN, NO. 14 1 PAIR	FOOT	2,819
ELECTRIC CABLE IN CONDUIT, SERVICE, NO. 4 2 C	FOOT	320
ELECTRIC CABLE IN CONDUIT, EQUIPMENT GROUNDING CONDUCTOR, NO. 6 1C	FOOT	1,702
TRAFFIC SIGNAL POST, GALVANIZED STEEL 10 FT.	EACH	2
TRAFFIC SIGNAL POST, GALVANIZED STEEL 16 FT.	EACH	2
TRAFFIC SIGNAL POST, GALVANIZED STEEL 18 FT.	EACH	2
STEEL MAST ARM ASSEMBLY AND POLE, 32 FT.	EACH	1
STEEL MAST ARM ASSEMBLY AND POLE, 44 FT.	EACH	2
STEEL MAST ARM ASSEMBLY AND POLE, 46 FT.	EACH	1
CONCRETE FOUNDATION, TYPE A	FOOT	24
CONCRETE FOUNDATION, TYPE C	FOOT	4
CONCRETE FOUNDATION, TYPE E 30-INCH DIAMETER	FOOT	14
CONCRETE FOUNDATION, TYPE E 36-INCH DIAMETER	FOOT	39
SIGNAL HEAD, LED, 1-FACE, 3-SECTION, MAST-ARM MOUNTED	EACH	1
SIGNAL HEAD, LED, 1-FACE, 5-SECTION, BRACKET MOUNTED	EACH	2
SIGNAL HEAD, LED, 1-FACE, 5-SECTION, MAST-ARM MOUNTED	EACH	7
SIGNAL HEAD, LED, 2-FACE, 5-SECTION, BRACKET MOUNTED	EACH	3
SIGNAL HEAD, LED, 2-FACE, 1-3 SECTION, 1-5 SECTION, BRACKET MOUNTED	EACH	1
PEDESTRIAN SIGNAL HEAD, LED, 1-FACE, BRACKET MOUNTED WITH COUNTDOWN TIMER	EACH	6
PEDESTRIAN SIGNAL HEAD, LED, 3-FACE, BRACKET MOUNTED WITH COUNTDOWN TIMER	EACH	2
TRAFFIC SIGNAL BACKPLATE, LOUVERED, ALUMINUM	EACH	8
LIGHT DETECTOR	EACH	2
LIGHT DETECTOR AMPLIFIER	EACH	1
INDUCTIVE LOOP DETECTOR	EACH	12
PREFORMED DETECTOR LOOP	FOOT	740
PEDESTRIAN PUSH-BUTTON	EACH	10
TEMPORARY FLASHING BEACON INSTALLATION	EACH	1
REMOVE EXISTING FLASHING BEACON INSTALLATION COMPLETE	EACH	1
ELECTRIC CABLE IN CONDUIT NO. 20 3/C, TWISTED, SHIELDED	FOOT	279
100% ELBURN & COUNTRYSIDE FIRE PROTECTION DISTRICT		

I.D.O.T. TRAFFIC SIGNAL INSTALLATION ELECTRICAL SERVICE REQUIREMENTS					TOTAL WATTAGE
TYPE	NO. LAMPS	WATTAGE (INCAND)	LED	% OPERATION	
SIGNAL (RED)	18		17	0.50	153
(YELLOW)	18		25	0.25	112.5
(GREEN)	18		15	0.25	67.5
ARROW	32		12	0.10	38.4
PED. SIGNAL	12		25	1.00	300.0
CONTROLLER	1		100	1.00	100.0
ILLUM. SIGN			25	0.05	
FLASHER			25		
TOTAL =					771.4

ENERGY COST TO: Illinois Department of Transportation
Division of Highways / District 1
201 W. CENTER COURT, SCHAUMBURG, IL 60196

ENERGY SUPPLY: CONTACT: Tom Perkins
PHONE: (630) 723-2127
COMPANY: ComEd

RESTORATION OF WORK AREA. RESTORATION OF THE TRAFFIC SIGNAL WORK AREA SHALL BE INCIDENTAL TO THE RELATED PAY ITEMS SUCH AS FOUNDATION, HANDHOLE, TRENCH AND BACKFILL, ETC. AND NO ADDITIONAL COMPENSATION SHALL BE ALLOWED. ALL ROADWAYSURFACES SUCH AS SHOULDERS, MEDIANS, SIDEWALKS, PAVEMENT, ETC. SHALL BE REPLACED IN KIND. ALL DAMAGE TO MOWED LAWNS SHALL BE REPLACED WITH AN APPROVED SOD, AND ALL DAMAGE TO UNPLOWED FIELDS SHALL BE SEEDED IN ACCORDANCE WITH STANDARD SPECIFICATIONS 252 AND 250 RESPECTIVELY.