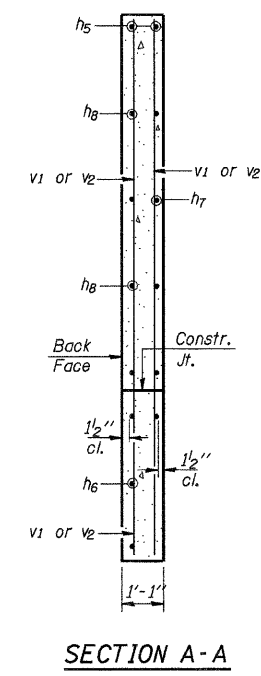
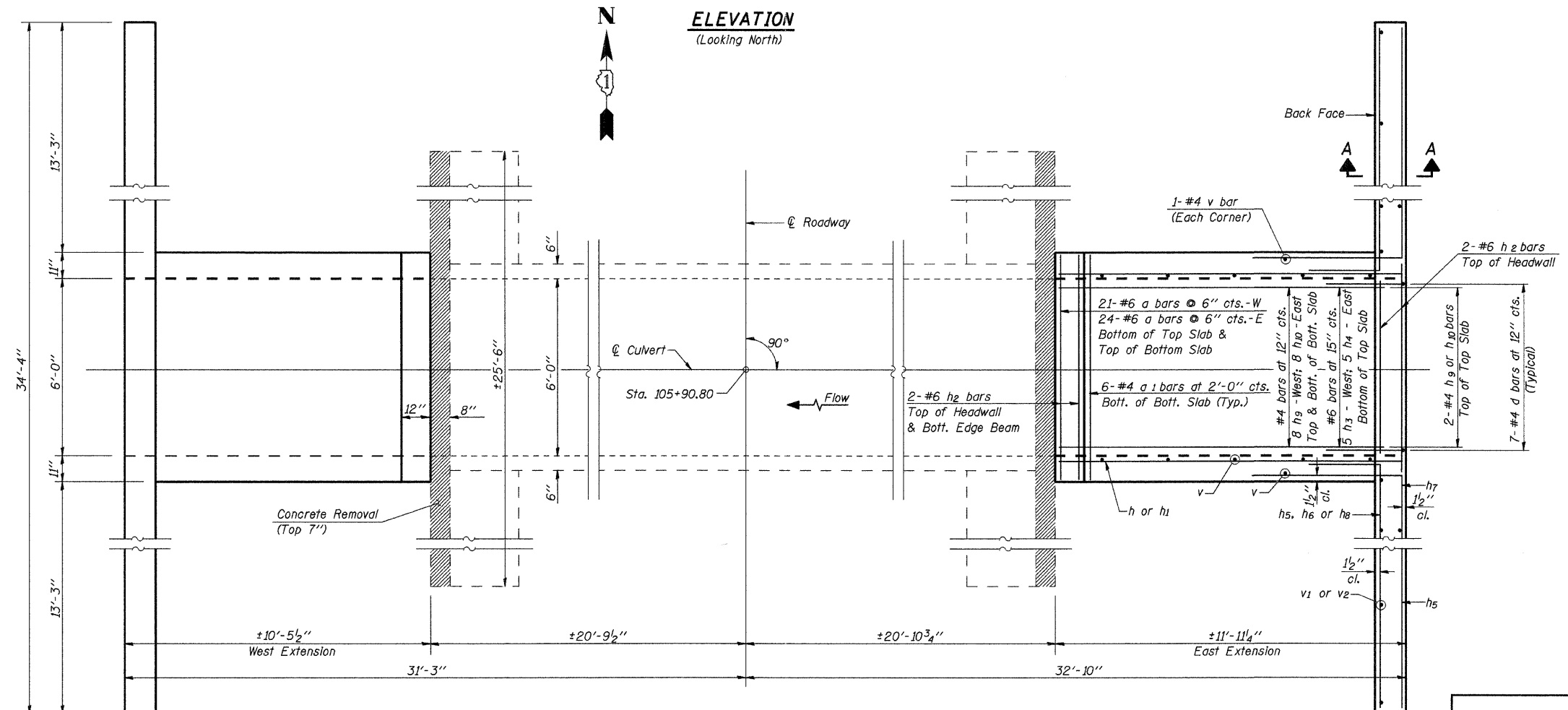
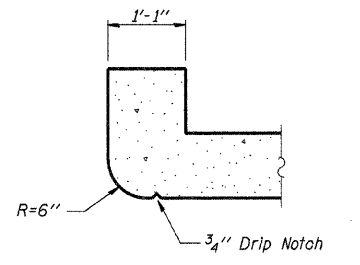
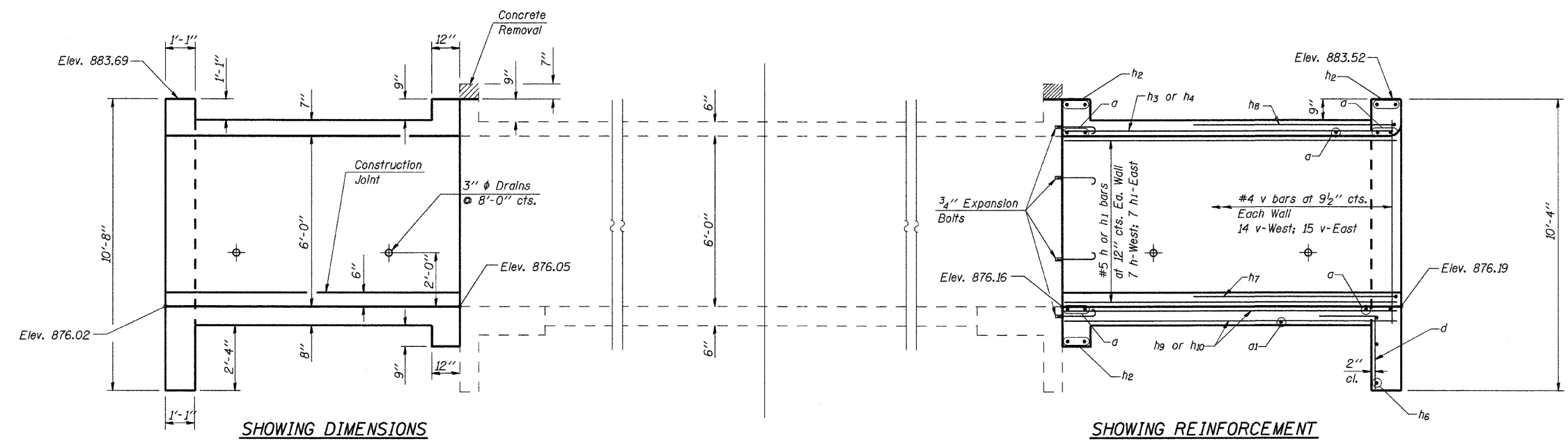


ROUTE NO.	SECTION	COUNTY	TOTAL SHEETS	SHEET NO.
FAP 326	126N-1	KANE		152
ILLINOIS				

Sheet 2 of 3



DESIGNED	S.F.M.
CHECKED	F.J.S.
DRAWN	K.T.R.
CHECKED	A.R.K. & S.F.M.

CULVERT DETAILS
F.A.P. RTE. 326 - IL. RTE. 47
SECTION 126N-1
KANE COUNTY
STATION 105+90.80

4440 ASH GROVE SPRINGFIELD, IL 62711 (217) 793-8800 www.fehr-graham.com	FEHR-GRAHAM & ASSOCIATES, LLC ENGINEERING AND SCIENCE CONSULTANTS P.O. BOX 100, SPRINGFIELD, IL 62762	JOB NO.: 48520H FILE: DETAIL.DGN DATE: 04-25-11
--	--	---