

STATE OF ILLINOIS
DEPARTMENT OF TRANSPORTATION
DIVISION OF HIGHWAYS
**PLANS FOR PROPOSED
FEDERAL AID HIGHWAY**

VILLAGE WIDE BIKE PATH - STAGE 2

FAU RTE. 1459 (26TH STREET), FAU 2759 (DESPLAINES AVENUE),
VILLAGE COMMONS, HAINSWORTH AVENUE, 25TH STREET AND VETERANS PARK
FROM FORESTVIEW AVENUE TO VETERAN DRIVE

BIKE PATH
FEDERAL PROJECT HPP-3463(006)
SECTION NO. 06-00080-01-BT
VILLAGE OF NORTH RIVERSIDE
COOK COUNTY
C-91-429-10

PROJECT LOCATION MAP
N.T.S.

FAU RTE	SECTION	COUNTY	TOTAL SHEETS	SHEET NO.
VARIOUS	06-00080-01-BT	COOK	37	1
F.H.W.A. REG.	ILLINOIS	PROJECT	HPP-3463(006)	

CONTRACT NO. 63461

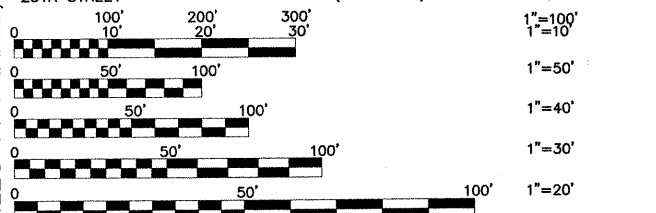


LOCATION OF SECTION INDICATED THIS: ■

- INDEX OF SHEETS**
- COVER SHEET, INDEX OF SHEETS, LOCATION MAP, INDEX OF DISTRICT 1 STANDARDS
 - INDEX OF HIGHWAY STANDARDS, GENERAL NOTES, MWRDGC NOTES, SPECIAL PROJECT NOTES
 - SUMMARY OF QUANTITIES
 - MWRDGC NOTES, IEPA REQUIREMENTS
 - HOT-MIX ASPHALT MIXTURE REQUIREMENTS, JOINT DETAILS, PROJECT NOTES, DETAILS
 - TYPICAL CROSS SECTIONS
 - PLAN & PROFILE:** 26th STREET (BIKE PATH) - 9th AVE. TO STA. 17+00
 - PLAN & PROFILE:** 26th STREET (BIKE PATH) - STA. 17+00 TO 1st AVE.
26th STREET (BIKE ROUTE) - 1st AVE. TO STA. 35+00
 - PLAN & PROFILE:** 26th STREET (BIKE ROUTE) - STA. 35+00 TO STA. 52+00
 - PLAN & PROFILE:** 26th STREET (BIKE ROUTE) - STA. 52+00 TO DES PLAINES AVE.
DES PLAINES AVENUE (BIKE ROUTE) - 26TH ST. TO STA. 64+25
 - PLAN & PROFILE:** DES PLAINES AVENUE (BIKE ROUTE) - STA. 64+25 TO VILLAGE COMMONS DRIVE
VILLAGE COMMONS (BIKE PATH) - STA. 64+99 TO STA. 81+00
 - PLAN & PROFILE:** VILLAGE COMMONS (BIKE PATH) - STA. 81+00 TO HAINSWORTH AVE.
HAINSWORTH AVENUE (BIKE ROUTE) - VILLAGE COMMONS TO 25th ST.
25th STREET (BIKE ROUTE) - HAINSWORTH AVE. TO STA. 89+50
 - PLAN & PROFILE:** 25th STREET (BIKE ROUTE AND STREET RECONSTRUCTION) - STA. 89+50 TO VETERANS PARK
VETERANS PARK (BIKE PATH) - 25TH STREET TO STA. 99+80
 - PLAN & PROFILE:** VETERANS PARK (BIKE PATH) - STA. 99+80 TO VETERAN DRIVE
 - STORM WATER POLLUTION PREVENTION PLAN
 - CROSS SECTIONS**
 - DISTRICT ONE STANDARD TRAFFIC SIGNAL DESIGN DETAILS
 - TRAFFIC SIGNAL MODIFICATION PLAN 1ST AVENUE AT 26TH STREET
 - CABLE PLAN, PHASE DESIGNATION DIAGRAM, EVP SEQUENCE AND SCHEDULE OF QUANTITIES 1ST AVENUE AT 26TH STREET
 - TRAFFIC SIGNAL MODIFICATION PLAN DES PLAINES AVENUE AT 26TH STREET
 - CABLE PLAN, PHASE DESIGNATION DIAGRAM, EVP SEQUENCE AND SCHEDULE OF QUANTITIES DES PLAINES AVENUE AT 26TH STREET
- INDEX OF DISTRICT 1 STANDARDS**
- BD-08 DETAILS FOR FRAMES AND LIDS ADJUSTMENTS WITH MILLING
 - BD-32 BUTT JOINT AND HMA TAPER DETAILS
 - TC-10 TRAFFIC CONTROL & PROTECTION FOR SIDE ROADS, INTERSECTIONS, & DRIVEWAYS
 - TC-13 DISTRICT ONE TYPICAL PAVEMENT MARKINGS
 - TC-14 TRAFFIC CONTROL AND PROTECTION AT TURN BAYS
 - TC-18 SIGNING FOR FLAGGING OPERATIONS AT WORK ZONE OPENINGS

INDEX OF HIGHWAY STANDARDS
SEE SHEET 2

TRAFFIC DATA		DESIGN DESIGNATION:	
ADT: 26TH STREET E. OF 1ST AVE.	13,500 (2009)	COLLECTOR	
26TH STREET W. OF 1ST AVE.	7,900 (2009)	COLLECTOR	
DES PLAINES AVENUE	12,700 (2009)	COLLECTOR	
25TH STREET	400 (2009)	LOCAL	
POSTED SPEED		DESIGN SPEED	
26TH STREET E. OF 1ST AVE.	25 MPH (EXISTING)	25 MPH (EXISTING)	
26TH STREET W. OF 1ST AVE.	25 MPH (PROPOSED)	25 MPH (PROPOSED)	
DES PLAINES AVENUE	30 MPH (PROPOSED)	30 MPH (PROPOSED)	
25TH STREET	25 MPH (PROPOSED)	25 MPH (PROPOSED)	



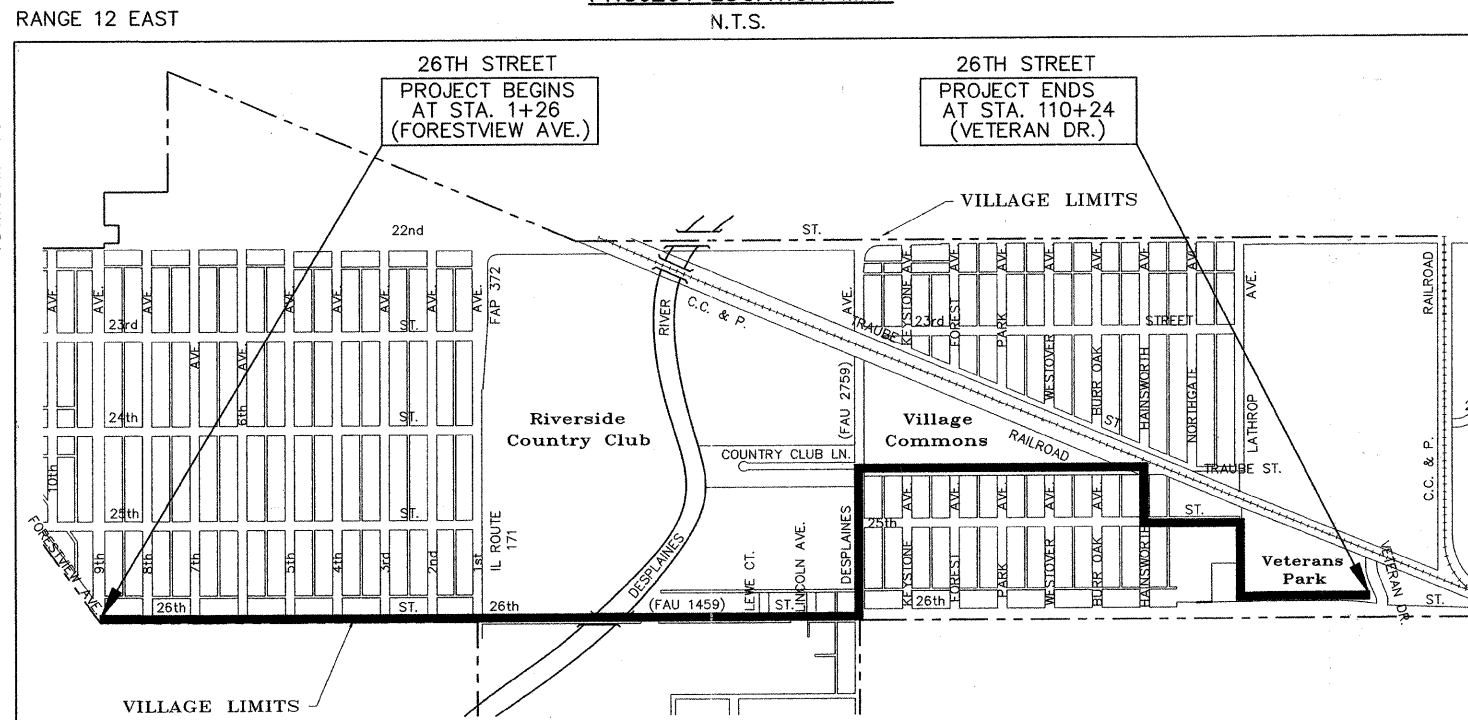
FULL SIZE PLANS HAVE BEEN PREPARED USING STANDARD ENGINEERING SCALES. REDUCED SIZED PLANS WILL NOT CONFORM TO STANDARD SCALES. IN MAKING MEASUREMENTS ON REDUCED PLANS, THE ABOVE SCALES MAY BE USED.

J.U.L.I.E.
JOINT
UTILITY
LOCATION
INFORMATION FOR
EXCAVATION
CALL 811

Know what's below.
Call before you dig.

Frank Novotny & Associates, Inc.
825 Midway Drive • Willowbrook, IL • 60527 • Telephone: (630) 887-8640 • Fax: (630) 887-0132
Civil Engineers
Municipal Consultants
ILLINOIS PROFESSIONAL DESIGN FIRM NO. 184-000928

REVISIONS			
NO.	BY	DATE	DESCRIPTION
1	THK	3-09-10	PER I.D.O.T. REVIEW
2	THK	4-06-10	PER I.D.O.T. REVIEW
3	THK	7-01-11	UPDATE STANDARDS
4	TRB	8-29-11	PER I.D.O.T. REVIEW



PROJECT LOCATED IN THE VILLAGE OF NORTH RIVERSIDE

— DENOTES LOCATION OF IMPROVEMENT IN RIVERSIDE TOWNSHIP

LENGTH OF PROJECT
VILLAGE WIDE BIKE PATH

GROSS LENGTH OF PROJECT 10,898 FEET (2.0640 miles)
NET LENGTH OF PROJECT 10,898 FEET (2.0640 miles)

STATE OF ILLINOIS
DEPARTMENT OF TRANSPORTATION
DIVISION OF HIGHWAYS
APPROVED 8-11-11 2011
VILLAGE OF NORTH RIVERSIDE Kenneth Krochmal
KENNETH KROCHMAL, MAYOR

PASSED SEPTEMBER 8, 2011
C. J. Hart
DISTRICT 1 ENGINEER OF LOCAL ROADS & STREETS

RELEASING FOR BID
BASED ON LIMITED
REVIEW SEPTEMBER 8, 2011
Diana M. O'Keefe
DEPUTY DIRECTOR OF HIGHWAYS, REGION 1 ENGINEER

TRAFFIC SIGNAL ENGINEER: SHEETS 18-27

Dana M. Schnabel
DANA M. SCHNABEL, P.E.
IL. P.E. NO. 062-054043
EXPIRES 11-30-2011
8/11/11
DATE

CIVIL ENGINEER: SHEETS 1-17 AND 28-33

Timothy H. Klass
TIMOTHY H. KLASS, P.E.
IL. P.E. NO. 062-046111
EXPIRES 11-30-2011
8/11/11
DATE

**PRINTED BY THE AUTHORITY
OF THE STATE OF ILLINOIS**

PROGRAM AND OFFICE ENGINEER: CHARLES F. RIDDLE, P.E. (847)705-4406 SCHAUMBURG, IL.

CONTRACT NO. 63461