

**IMPORTANT!**

FULL SIZE PLANS HAVE BEEN PREPARED USING STANDARD ENGINEERING SCALES. REDUCED SIZED PLANS WILL NOT CONFORM TO STANDARD SCALES INDICATED IN TITLE BLOCK.

**NOTE:**  
ACCESS IN AND OUT OF DEAD END 25th STREET MUST BE MAINTAINED AT ALL TIMES.

THE CONTRACTOR SHALL CONSTRUCT MAILBOX BANKS AT THE FOLLOWING LOCATION:  
-ON 25TH STREET, EAST OF HAINSWORTH AVE.

**NOTE:**  
ALL EXISTING TRAFFIC SIGNS WITHIN THE PROJECT LIMITS TO BE RELOCATED BACK OF NEW CURB SEE SHEET 5 FOR SIGN PLACEMENT DETAIL

FOR CONTINUATION SEE SHEET X

EXIST. STORM SEWER, (RCCP), 12"  
RESURFACING LIMIT (EAST) STA. 90+81  
RECONSTRUCTION LIMIT (WEST) STA. 90+81

PROP. 15 FT STORM SEWER, CLASS B, TYPE 2, 8" AT 1.00 GR.

PROP. CB #1, T-A, 4' DIA. WITH HALF TRAP T-1 FR. W/O.L.

PROP. 145 FT STORM SEWER, CLASS B, TYPE 2, 8" AT 0.40% GR.

PROP. 280 FT STORM SEWER, CLASS B, TYPE 2, 12" AT 0.40% GR.

PROP. 20 FT STORM SEWER, CLASS B, TYPE 2, 8" AT 1.00 GR.

PROP. INL #1, T-A, 2' DIA. T-1 FR. W/O.L. TC=619.30 RIM=618.80 INV(S)=615.40 INV(N)=615.60

"STATION EQUATION" STA. 95+26 WEST = STA. 95+26 SOUTH

FOR CONSTRUCTION CROSS SECTIONS OF DRIVEWAYS ON 25TH STREET SEE SHEET 8

FOR CROSS SECTIONS SEE SHEET 20 OF 37

ALL WORK FROM STA 90+50 TO 95+26 DRAINS TO THE CENTERLINE OF THE ROW. NOW PERIMETER EROSION BARRIER NEEDED.

**LEGEND**

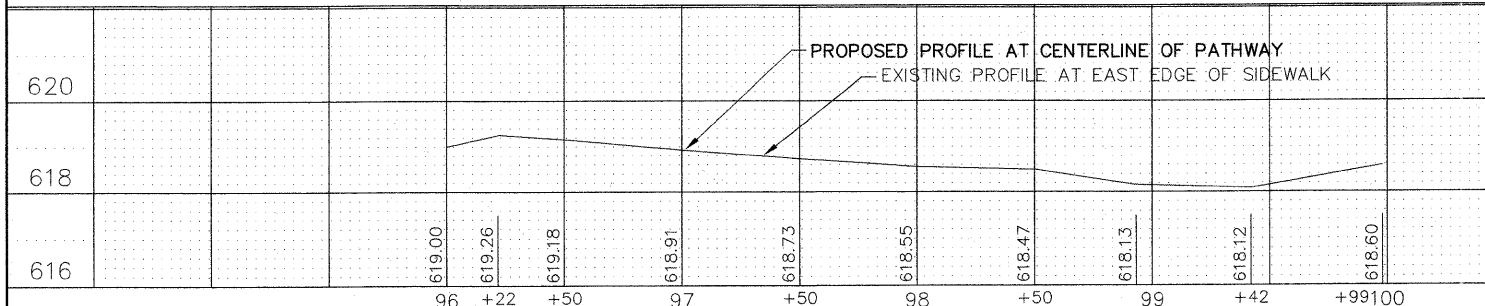
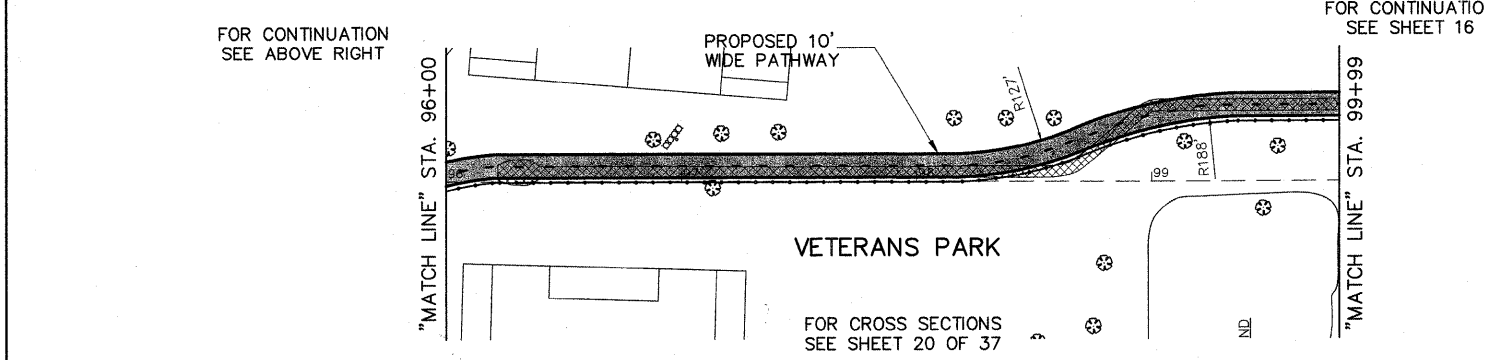
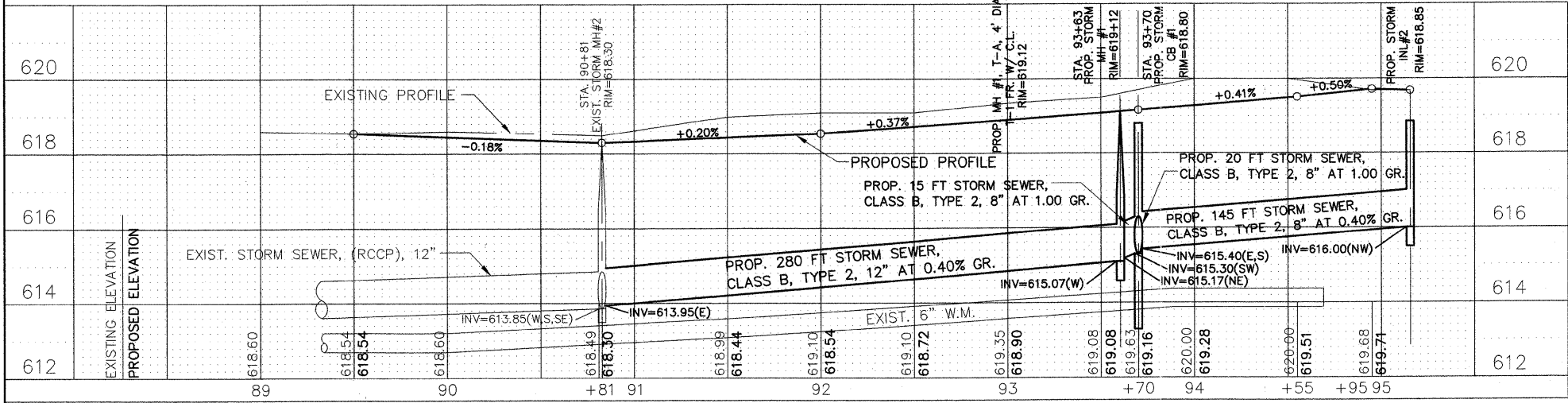
- DENOTES EARTH EXCAVATION, AND/OR SIDEWALK REMOVAL, GEOTECHNICAL FABRIC FOR GROUND STABILIZATION, AGGREGATE BASE COURSE, TYPE B, 6 INCH, HOT-MIX ASPHALT BINDER COURSE, IL-19.0, N50, 2 INCH AND HOT-MIX ASPHALT SURFACE COURSE, MIX C, N50, 1-1/2 INCH
- DENOTES HOT-MIX ASPHALT SURFACE REMOVAL, VARIABLE DEPTH, LEVELING BINDER (MACHINE METHOD), N50, 1 INCH AVG., AREA RELECTIVE CRACK CONTROL TREATMENT, SYSTEM A AND HOT-MIX ASPHALT SURFACE COURSE, MIX C, N50, 2 INCH
- DENOTES EARTH EXCAVATION, AND/OR PAVEMENT REMOVAL, GEOTECHNICAL FABRIC FOR GROUND STABILIZATION, SUBBASE GRANULAR MATERIAL TYPE B, 4 INCH, HOT-MIX ASPHALT BINDER COURSE, IL-19.0, N50, 2-1/4 INCH AND HOT-MIX ASPHALT SURFACE COURSE, MIX C, N50, 2 INCH
- AREA RELECTIVE CRACK CONTROL TREATMENT, SYSTEM A, HOT-MIX ASPHALT SURFACE COURSE, MIX C, N50, 2 INCH
- DENOTES HOT-MIX ASPHALT SURFACE REMOVAL, 2 INCH, AREA RELECTIVE CRACK CONTROL TREATMENT, SYSTEM A, HOT-MIX ASPHALT SURFACE COURSE, MIX C, N50, 2 INCH
- DENOTES CLASS D PATCHES, TYPE II - IV, 8 INCH - AS DIRECTED AT LOCATIONS DIRECTED BY THE ENGINEER AFTER PROOF ROLLING
- DENOTES HOT-MIX ASPHALT DRIVEWAY REMOVAL AND REPLACEMENT, 3 INCH
- DENOTES P.C. SIDEWALK REMOVAL
- DENOTES PORTLAND CEMENT CONCRETE SIDEWALK, 5 INCH
- "HC" DENOTES DETECTABLE WARNING PER I.D.O.T. STANDARD 424001-05 FOR HANDICAP RAMPS
- "A" DENOTES EXISTING VALVE VAULTS, VALVE BOXES, CATCH BASINS, VALVE VAULTS, HANDHOLES AND MANHOLES TO BE CLEANED, GROUDED, AND ADJUSTED TO GRADE WITH NEW ADJUSTING RINGS. (ALL TOP BANDS OF FALLEN, COMMON OR CONCRETE BRICK TO BE REPLACED WITH PRECAST CONCRETE ADJUSTING RINGS)
- "S" DENOTES EXISTING FRAMES AND LIDS TO BE ADJUSTED (SPECIAL)
- 8 FT DENOTES COMBINATION CONCRETE CURB & GUTTER REMOVAL AND REPLACEMENT PROVIDE DETECTABLE WARNINGS AND RAMPS AT ALL SIDEWALK
- X DENOTES "TREE REMOVAL"

**PROPOSED SIGN SCHEDULE**

D11-1 24"x 18" 1	W11-1 24"x 24" 2	W8-10 24"x 24" 3	R10-24 9"x 12" 4
R5-3 24"x 24" 5	R1-1 18"x 18" 6	W8-10 24"x 18" 7	R9-6 12"x 18" 8
M7-1R 12"x 9" 9	M7-2 12"x 9" 10	M7-1L 12"x 9" 11	R1-2 24" 12
R7-9a 12"x 18" 13	W16-2P 24"x 18" 14	R2-1 24"x 30" 15	SEE SHEET 5 16
W1-2R 18"x 18" 17	W3-1AP 24"x 18" 18	W4-1L 24"x 24" 19	W2-4 18"x 18" 20
W11A-2 30"x 30" 21	<p><b>EROSION CONTROL LEGEND</b></p> <ul style="list-style-type: none"> <li>TEMPORARY DITCH CHECK</li> <li>EROSION CONTROL BLANKET</li> <li>PERIMETER EROSION BARRIER - SILT FILTER FENCE OR OTHER AS APPROVED BY THE ENGINEER</li> <li>INLET AND PIPE PROTECTION EROSION BARRIER, STRAW BALES</li> <li>SEDIMENT BASIN</li> <li>DRAINAGE STRUCTURE</li> <li>INLET FILTER</li> </ul>		

NOTE: ALL ITEMS SHALL BE CONSTRUCTED AS SHOWN ON STANDARD 280001 AND AS DIRECTED BY THE ENGINEER. MAINTENANCE AND CLEANING OF THE EROSION CONTROL ITEMS SHALL BE INCLUDED IN THE RESPECTIVE EROSION CONTROL PAY ITEM.

**Frank Novotny & Associates, Inc.**  
805 Midway Drive • Willowbrook, IL • 60527 • Telephone: (630) 887-8840 • Fax: (630) 887-0133  
ILLINOIS PROFESSIONAL DESIGN FIRM NO. 084-000828



**THERMOPLASTIC STRIPING CODE**

- (A) PROPOSED DOUBLE SOLID YELLOW THERMOPLASTIC PAVEMENT MARKING - CENTER LINE 4", 11" O/C
- (B) PROPOSED SKIP-DASH YELLOW THERMOPLASTIC PAVEMENT MARKING - LINE 4" - 3' DASH, 9' SKIP (PATHWAY LANE LINE)
- (C) PROPOSED SOLID WHITE THERMOPLASTIC PAVEMENT MARKING - LINE 4" (PARKING STALL)
- (D) PROPOSED SOLID WHITE THERMOPLASTIC PAVEMENT MARKING - LINE 6" (EDGE)
- (E) PROPOSED SOLID WHITE THERMOPLASTIC PAVEMENT MARKING - LINE 6" (CROSSWALK)
- (F) PROPOSED SOLID WHITE THERMOPLASTIC PAVEMENT MARKING - LINE 12" (CROSSWALK)
- (G) PROPOSED SOLID WHITE THERMOPLASTIC PAVEMENT MARKING - LINE 24" (STOP BAR)
- (H) PROPOSED SOLID WHITE THERMOPLASTIC PAVEMENT MARKING - LETTERS & SYMBOLS

**PAINTED STRIPING CODE**

- (I) PROPOSED SOLID WHITE PAINTED PAVEMENT MARKING - LETTERS & SYMBOLS

FILE NAME: VILLAGE WIDE BIKE PATH - STAGE 2 FAU RTE. 1459 (26TH STREET), FAU 2759 (DESPLAINES AVENUE), VILLAGE COMMONS, HAINSWORTH AVENUE, 25TH STREET AND VETERANS PARK FROM FORESTVIEW AVENUE TO VETERAN DRIVE	USER NAME =	DESIGNED - THK	REVISED - THK 3-09-10
PLOT SCALE = H:1"=40'; V:1"=2'	CHECKED - THK	DRAWN - JFP-JEP	REVISED - THK 4-06-10
PLOT DATE =	DATE - 1-29-10		

**STATE OF ILLINOIS  
DEPARTMENT OF TRANSPORTATION**

**PLAN & PROFILE:**  
25th STREET- (BIKE ROUTE AND STREET RECONSTRUCTION) STA. 89+50 TO VETERANS PARK  
VETERANS PARK- (BIKE PATH) 25TH STREET TO STA. 99+80

SCALE:	SHEET NO. OF SHEETS	STA. TO STA.
--------	---------------------	--------------

F.A. RTE.	SECTION	COUNTY	TOTAL SHEETS	SHEET NO.
VAR	06-00080-01-BT	COOK	37	15
CONTRACT NO. 63461				
FED. ROAD DIST. NO.	ILLINOIS FED. AID PROJECT	HPP-3463(006)		