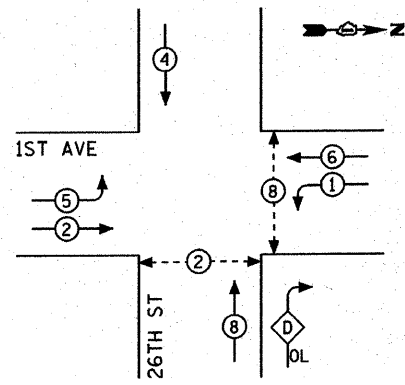


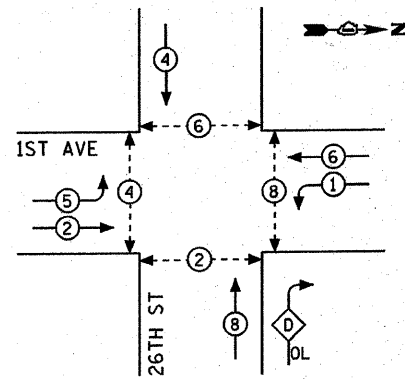
EXISTING CONTROLLER SEQUENCE



PHASE DESIGNATION DIAGRAM

OVERLAP LETTER	PERMISSIVE PHASE	PROTECTED PHASE
D	8	1

PROPOSED CONTROLLER SEQUENCE



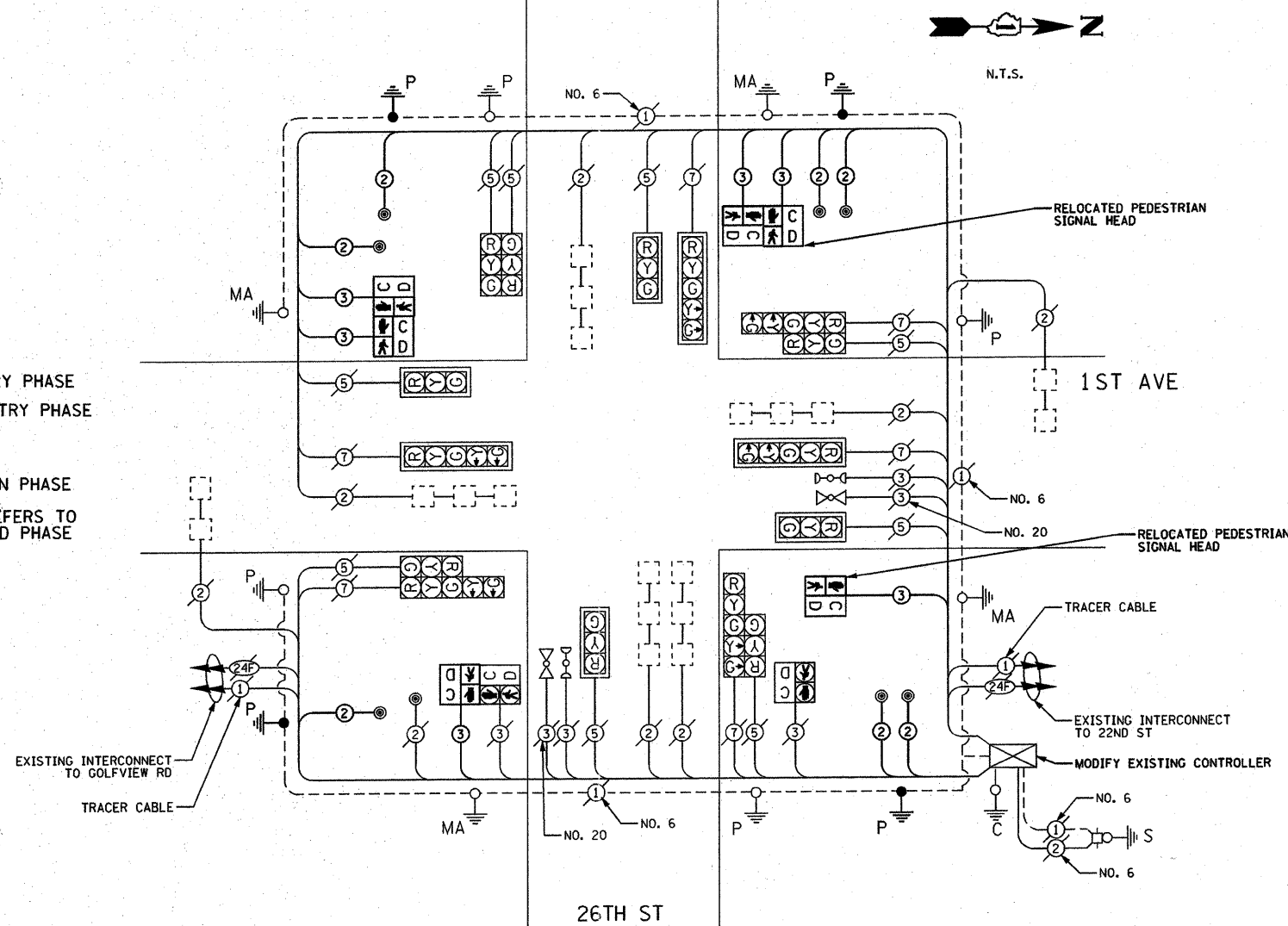
PHASE DESIGNATION DIAGRAM

OVERLAP LETTER	PERMISSIVE PHASE	PROTECTED PHASE
D	8	1

LEGEND

- DUAL ENTRY PHASE
- SINGLE ENTRY PHASE
- OVERLAP
- PEDESTRIAN PHASE
- NUMBER REFERS TO ASSOCIATED PHASE

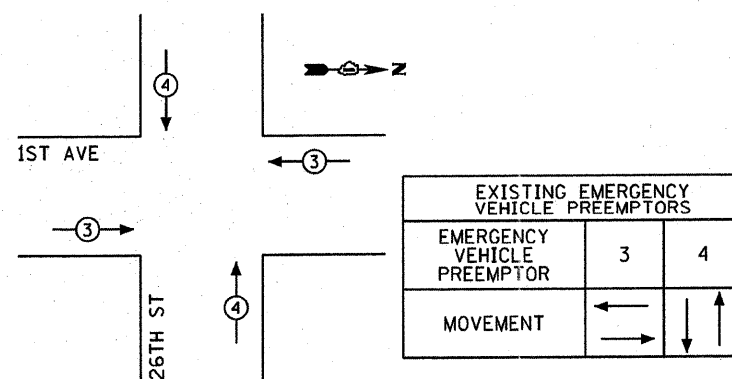
CABLE PLAN



SCHEDULE OF QUANTITIES

QTY	UNIT	ITEM DESCRIPTION
26	FOOT	CONDUIT IN TRENCH, 2" DIA., GALVANIZED STEEL
26	FOOT	TRENCH AND BACKFILL FOR ELECTRICAL WORK
1	EACH	MAINTENANCE OF EXISTING TRAFFIC SIGNAL INSTALLATION
967	FOOT	ELECTRIC CABLE IN CONDUIT, SIGNAL NO. 14 2C
1018	FOOT	ELECTRIC CABLE IN CONDUIT, SIGNAL NO. 14 3C
4	EACH	PEDESTRIAN PUSH-BUTTON POST, GALVANIZED STEEL, TYPE II
4	EACH	DRILL EXISTING HANDHOLE
2	EACH	PEDESTRIAN SIGNAL HEAD, LED, 1-FACE, BRACKET MOUNTED WITH COUNTDOWN TIMER
1	EACH	PEDESTRIAN SIGNAL HEAD, LED, 2-FACE, BRACKET MOUNTED WITH COUNTDOWN TIMER
8	EACH	PEDESTRIAN PUSH-BUTTON
2	EACH	RELOCATE EXISTING PEDESTRIAN SIGNAL HEAD
1	EACH	MODIFY EXISTING CONTROLLER
316	FOOT	REMOVE ELECTRIC CABLE FROM CONDUIT
1	EACH	REMOVE EXISTING TRAFFIC SIGNAL EQUIPMENT

EMERGENCY VEHICLE PREEMPTION SEQUENCE



NOTE:

AUTOMATIC ENFORCEMENT CAMERAS ARE INSTALLED AT THIS INTERSECTION. THE CONTRACTOR MUST CONTACT THE VILLAGE OF NORTH RIVERSIDE'S ENGINEER AND REDFLEX TRAFFIC SYSTEMS TO COORDINATE ANY POTENTIAL IMPACTS THE MODIFICATIONS SHOWN ON THESE PLANS WILL HAVE TO THESE CAMERAS. CONTACT INFORMATION IS LISTED BELOW

- REDFLEX TRAFFIC SYSTEMS: (480) 607-0705
- VILLAGE OF NORTH RIVERSIDE ENGINEER (FRANK NOVOTNY & ASSOC.): (630) 887-8640

NOTE:

THE TRAFFIC SIGNAL CONTROL EQUIPMENT FOR THIS PROJECT SHALL BE "ECONOLITE" TO MATCH THE EXISTING ADJACENT SYSTEM.

I.D.O.T. TRAFFIC SIGNAL INSTALLATION ELECTRICAL SERVICE REQUIREMENTS					TOTAL WATTAGE
TYPE	NO. LAMPS	WATTAGE (INCAND.)	LED	% OPERATION	
SIGNAL (RED)	15	17		0.50	127.5
(YELLOW)	15	25		0.25	93.75
(GREEN)	15	15		0.25	56.25
ARROW	12	12		0.10	14.4
PED. SIGNAL	8	25		1.00	200.0
CONTROLLER	1	100		1.00	100.0
ILLUM. SIGN				0.05	
VIDEO SYSTEM				1.00	
FLASHER				0.50	
TOTAL =					591.9

ENERGY COSTS TO:
VILLAGE OF NORTH RIVERSIDE
 2401 S. DesPlaines Avenue
 North Riverside, IL 60546
 ENERGY SUPPLY CONTACT: **LINDA CLARK**
 PHONE: (708) 410-5313
 COMPANY: **COM. ED.**

FILE NAME =	USER NAME =	DESIGNED - GJG	REVISED DMS 3/9/2010
...signal\29-cable 1st.dgn		DRAWN - GJG	REVISED DMS 4/6/2010
	PLOT SCALE =	CHECKED - DMS	REVISED DMS 4/19/2010
	PLOT DATE = 4/19/2010	DATE - 1/29/2010	REVISED -

STATE OF ILLINOIS
 DEPARTMENT OF TRANSPORTATION

CABLE PLAN, PHASE DESIGNATION DIAGRAM,
 EVP SEQUENCE AND SCHEDULE OF QUANTITIES
 1ST AVENUE AT 26TH STREET

SCALE: NONE SHEET NO. OF SHEETS STA. TO STA.

KLOAN		9575 West Higgins Road, Suite 400 Rosemont, Illinois 60018 P: (847) 518-9990 F: (847) 518-9987	
F.A. RTE.	SECTION	COUNTY	TOTAL SHEETS
VAR	06-00080-01-BT	COOK	37 29
		CONTRACT NO. 63461	
FED. ROAD DIST. NO.		ILLINOIS FED. AID PROJECT HPP-34630061	

PROJECT # 09-174