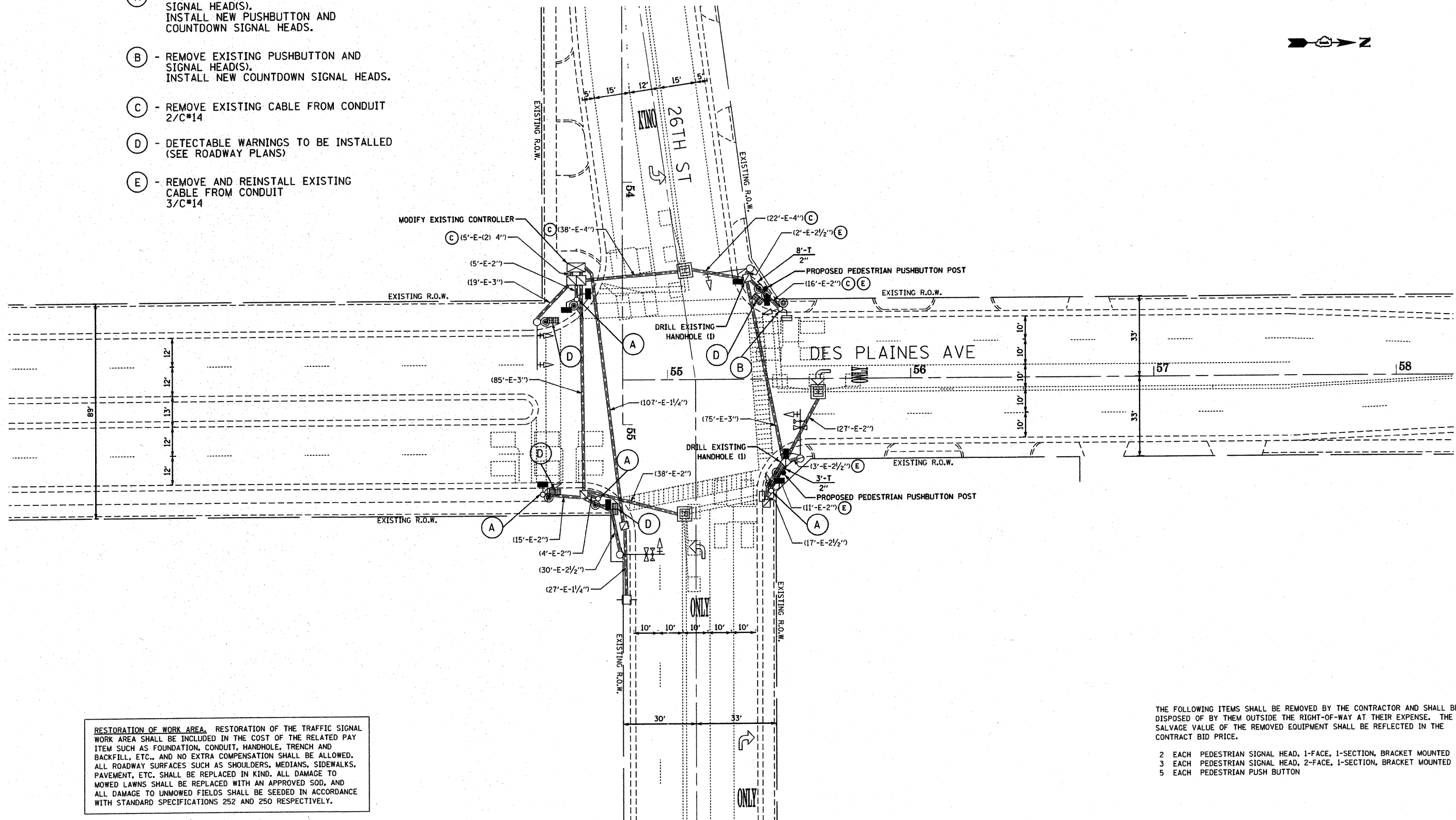


- (A) - REMOVE EXISTING PUSHBUTTON AND SIGNAL HEAD(S).  
INSTALL NEW PUSHBUTTON AND COUNTDOWN SIGNAL HEADS.
- (B) - REMOVE EXISTING PUSHBUTTON AND SIGNAL HEAD(S).  
INSTALL NEW COUNTDOWN SIGNAL HEADS.
- (C) - REMOVE EXISTING CABLE FROM CONDUIT  
2/C\*14
- (D) - DETECTABLE WARNINGS TO BE INSTALLED  
(SEE ROADWAY PLANS)
- (E) - REMOVE AND REINSTALL EXISTING  
CABLE FROM CONDUIT  
3/C\*14



**RESTORATION OF WORK AREA.** RESTORATION OF THE TRAFFIC SIGNAL WORK AREA SHALL BE INCLUDED IN THE COST OF THE RELATED PAY ITEM SUCH AS FOUNDATION, CONDUIT, HANDHOLE, TRENCH AND BACKFILL, ETC., AND NO EXTRA COMPENSATION SHALL BE ALLOWED. ALL ROADWAY SURFACES SUCH AS SHOULDERS, MEDIANS, SIDEWALKS, PAVEMENT, ETC. SHALL BE REPLACED IN KIND. ALL DAMAGE TO MOWED LAWNS SHALL BE REPLACED WITH AN APPROVED SOD, AND ALL DAMAGE TO UNMOWED FIELDS SHALL BE SEEDED IN ACCORDANCE WITH STANDARD SPECIFICATIONS 252 AND 250 RESPECTIVELY.

THE FOLLOWING ITEMS SHALL BE REMOVED BY THE CONTRACTOR AND SHALL BE DISPOSED OF BY THEM OUTSIDE THE RIGHT-OF-WAY AT THEIR EXPENSE. THE SALVAGE VALUE OF THE REMOVED EQUIPMENT SHALL BE REFLECTED IN THE CONTRACT BID PRICE.

- 2 EACH PEDESTRIAN SIGNAL HEAD, 1-FACE, 1-SECTION, BRACKET MOUNTED
- 3 EACH PEDESTRIAN SIGNAL HEAD, 2-FACE, 1-SECTION, BRACKET MOUNTED
- 5 EACH PEDESTRIAN PUSH BUTTON

**KLOAN**  
Kenig, Lindgren, O'Hara, Aboona, Inc.  
9575 West Higgins Road, Suite 400  
Rosemont, Illinois 60018  
P: (847) 518-9900 F: (847) 518-9987  
PROJECT # 09-174

FILE NAME = ...130-signal Des Plaines.dgn	USER NAME =	DESIGNED - GJG	REVISED DMS 3/9/2010
		DRAWN - GJG	REVISED DMS 4/6/2010
		CHECKED - DMS	REVISED DMS 4/19/2010
		DATE - 1/29/2010	REVISED -

**STATE OF ILLINOIS  
DEPARTMENT OF TRANSPORTATION**

<b>TRAFFIC SIGNAL MODERNIZATION PLAN DES PLAINES AVENUE AT 26TH STREET</b>			
SCALE: 1" = 20'	SHEET NO. OF SHEETS	STA. TO STA.	

F.A. RTE.	SECTION	COUNTY	TOTAL SHEETS	SHEET NO.
VAR	06-00080-01-BT	COOK	37	30
FED. ROAD DIST. NO.			ILLINOIS FED. AID PROJECT HPP-3463006	
			CONTRACT NO. 63461	