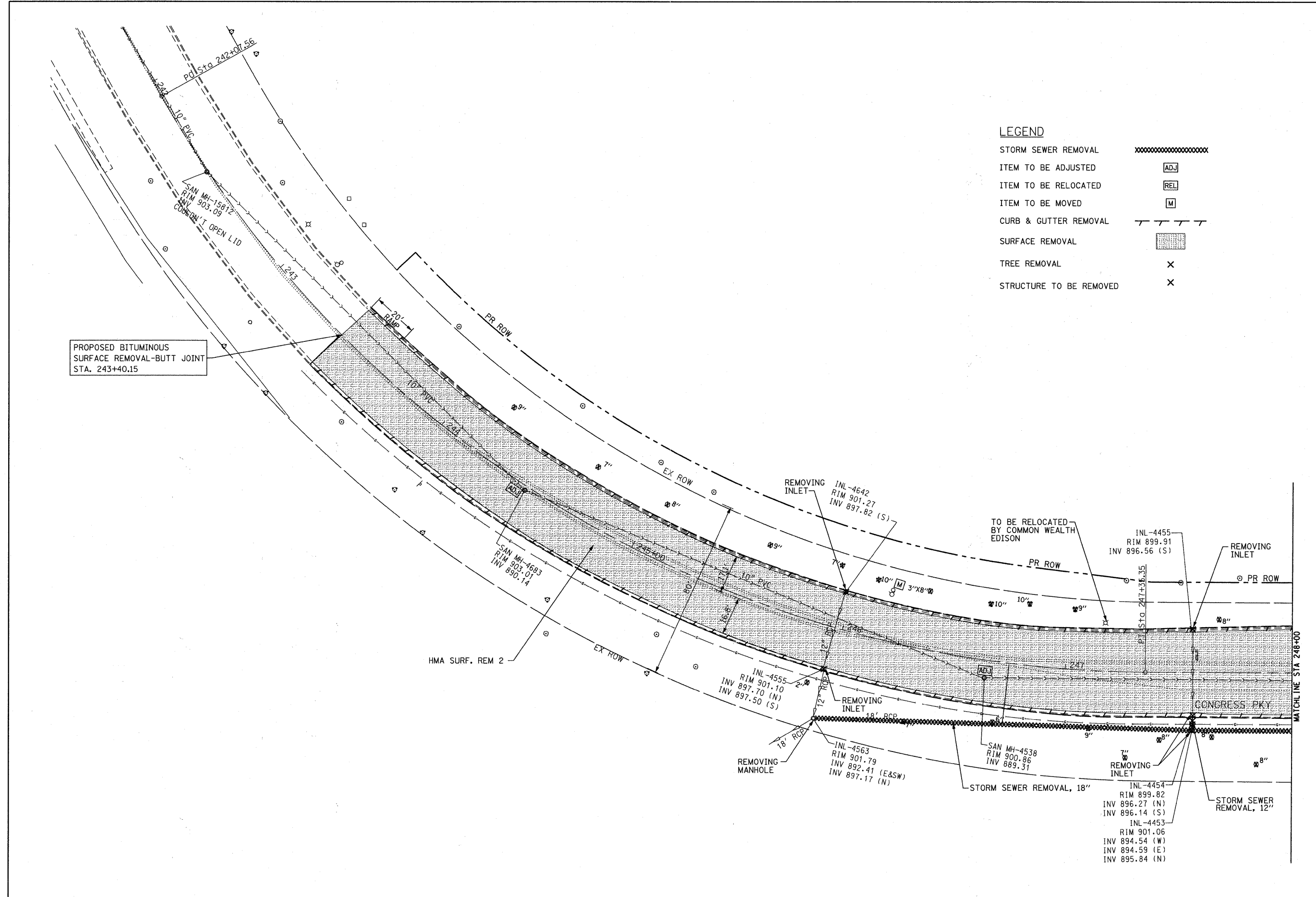




**LEGEND**

- STORM SEWER REMOVAL XXXXXXXXXXXXXXXXXXXXXXXXXXXX
- ITEM TO BE ADJUSTED [ADJ]
- ITEM TO BE RELOCATED [REL]
- ITEM TO BE MOVED [M]
- CURB & GUTTER REMOVAL - - - - -
- SURFACE REMOVAL [Hatched Box]
- TREE REMOVAL X
- STRUCTURE TO BE REMOVED X

PROPOSED BITUMINOUS SURFACE REMOVAL-BUTT JOINT STA. 243+40.15



FILE NAME = F:\396-064 Pingree Road\CAAD.Sheets\1dca	USER NAME = cesario	DESIGNED - BD	REVISED -
Format\DI63519-sht-rem.3.dgn		DRAWN - DC	REVISED -
PLOT SCALE = 20.000' / IN.		CHECKED - BD	REVISED -
PLOT DATE = 9/14/2011		DATE - 08-29-2011	REVISED -

**STATE OF ILLINOIS  
DEPARTMENT OF TRANSPORTATION**

<b>PINGREE ROAD RECONSTRUCTION REMOVAL PLAN</b>		F.A.U. RTE.	SECTION	COUNTY	TOTAL SHEETS	SHEET NO.
SCALE: 1"=20'		126	95-00090-01-FP	McHENRY	92	17
SHEET NO. 17 OF 92 SHEETS		STA. 242+00 TO STA. 248+00		CONTRACT NO. 63519		
ILLINOIS FED. AID PROJECT						

F.A.U. RTE.	SECTION	COUNTY	TOTAL SHEETS	SHEET NO.
126	95-00090-01-FP	McHENRY	92	17
CONTRACT NO. 63519				
ILLINOIS FED. AID PROJECT				